

* New York Public Library Digital Gallery

Pearl DeSure

LIS 647 - Systems Analysis for Information Management
(with a focus on digital libraries)

November 9, 2011

Dr. Luz M. Quiroga



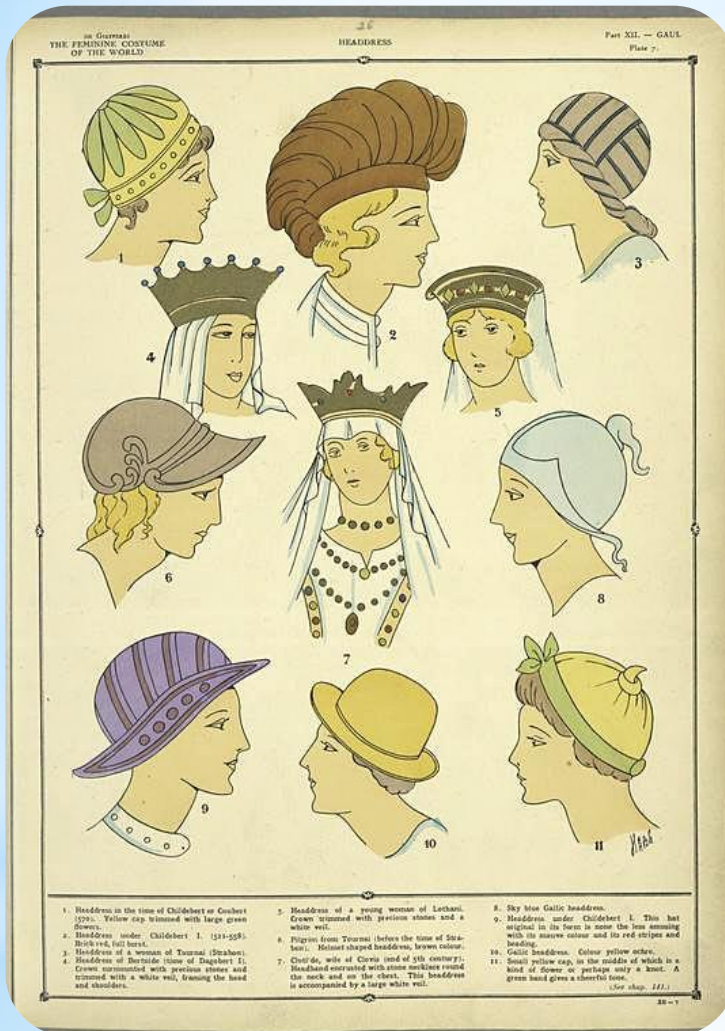
* “To select, collect, preserve and make accessible the accumulated wisdom of the world, without distinction as to income, religion, nationality, or other human condition.”

* mission



- * Image database with over 700,000 images
- * Open to the public
- * Reflects the field strengths of NYPL: history, social science, culture, and applied sciences.
- * Extension of physical holdings

* background



- * “in high demand by the public
- * too vulnerable for routine availability
- * difficult to serve
- * key holdings in particular collection strengths
- * items deemed worthy of discovery”

* selection

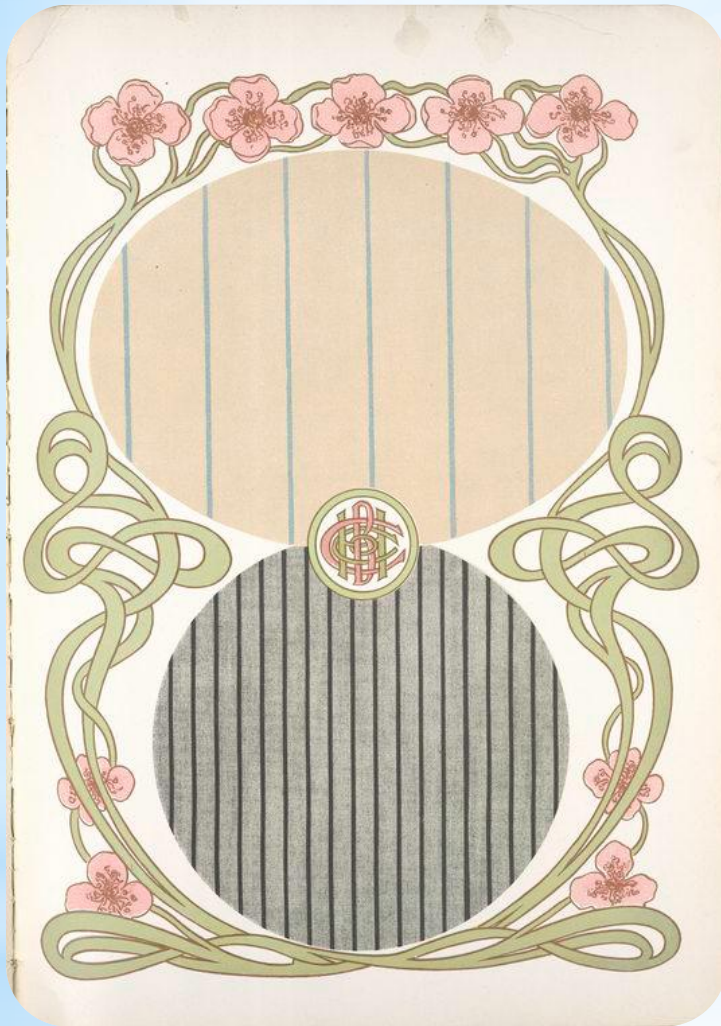


- * Divided into collection guides, specific to creator, topic, era, etc.

- * Sub-divided into “topical themes” based on source

- * Library divisions ensure relevance to physical collection

- * **organization**



- * Each collection guide provides background on history and development, and library divisions culled from
- * Can view related subjects or search within guide

* content

- * Browse by:

- * library division

- * Search by general collections, source titles, and collection guides

- * subjects a-z

- * metadata enabled

- * Search by LCSH and LC Thesaurus for Graphic Material

- * names

- * Search by creator and author

* browsing and
searching



- * Can obtain personal use license
- * Images available for embedding and printing
- * Also available as notecards or framed

*services



- * Digitized with flatbed scanner or camera
- * Four image files created: three low-resolution and one high-resolution
 - * Low-res for web delivery
 - * High-res (300- to 1200-dpi) for reproduction and licensing

* **technology**

- * The New York Public Library designed its digital gallery as a natural extension of its physical collection. Multiple search and browsing options, detailed and well thought-out organization, a thorough help page, and opportunities for personal use contribute to making the digital gallery a highly usable digital library that connects the user to the physical holdings of a famous library.

* Conclusion

* If you are interested in information on similar digital library collections, take a look at the following reviews:

* Claremont College - Fashion Plate Collection
by Carina Chernisky

<http://hdl.handle.net/10125/15172>

* The Museum of Costume - Fashion Museum
by Alyssa Okimoto

<http://hdl.handle.net/10125/15170>

* Selected Resources