

PRODUCTION STAFF:

STAGE MANAGER: LILY BRENNICK
BACKSTAGE CREW: KATIE BAUER, ROBYN KAWAMOTO, MELANIE ALVIO, DEREK SUMIDA,
GARY KWING HEI TO
LIGHT BOARD OPERATOR: ANNIE KWOCK
WARDROBE SUPERVISOR: JESSICA BEHNER
STAFF COSTUME SHOP MANAGER: HANNAH SCHAUER GALLI
LAB THEATRE COSTUME COORDINATOR: MEGAN PATTON
COSTUME CONSTRUCTION CREW: TSEHAIU ABYE, JILL BOWEN, BERTHA FERNANDEZ,
MEGAN PATTON, STUDENTS FROM THEA 221
MASTER WELDER: DANIEL GELBMANN
STAFF TECHNICAL DIRECTOR: DANIEL J. ANTEAU
FACILITIES COORDINATOR: GERRY KAWAOKA
LAB THEATRE TECHNICAL COORDINATOR: JOHN STRIFFLER
SET CONSTRUCTION CREW: DANIEL GELBMANN, JUNGHAH HAN, JOHN STRIFFLER
AND THEA 221 STUDENTS


FRONT OF HOUSE STAFF

STAFF THEATRE MANAGER: MARTY MYERS
STAFF BOX OFFICE MANAGER: TIM GONZALEZ-WILER
BOX OFFICE SUPERVISOR: NICOLE TESSIER
BOX OFFICE STAFF: CAROLYN COVALT, TANISHA FRANQUEZ, DANIELLE WILLIAMS,
JIEJUN YU
PUBLICITY DIRECTOR: JESSICA JACOB
PUBLICITY ASSISTANTS: CHRIS DOI, ASHLEY LOGAN
GRAPHIC DESIGNER: JEFF SANNER
HOUSE MANAGER: DANIEL AKIYAMA
ASSISTANT HOUSE MANAGERS: ASHLEY LOGAN, LEILANI RIVERA
WEBSITE ASSISTANT: MICHAEL NOMURA
PHOTOGRAPHER: ANDREW SHIMABUKU
DEPARTMENT OFFICE STAFF: TANA MARIN, LORI ANN CHUN
DEPARTMENT CHAIR: W. DENNIS CARROLL

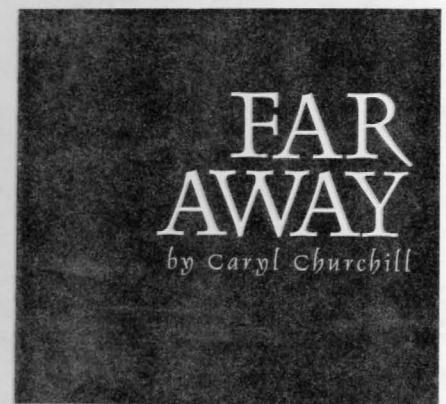
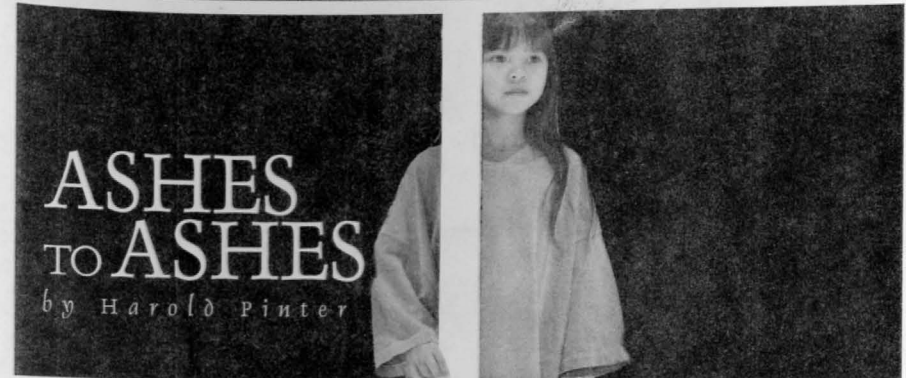
FAR AWAY PRODUCED BY SPECIAL ARRANGEMENT WITH SAMUEL FRENCH, INC.

ASHES TO ASHES ORIGINALLY PRODUCED IN THE UNITED STATES BY ROUNDABOUT
THEATRE COMPANY 1998 (TODD HAIMES, ARTISTIC DIRECTOR).

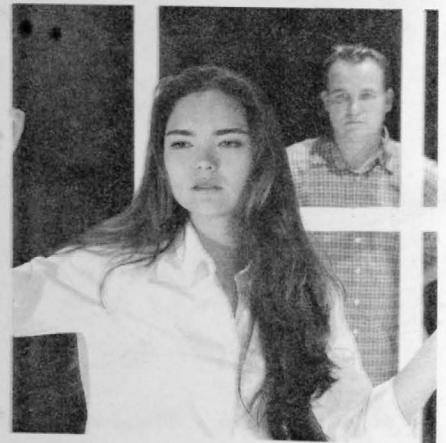
ASHES TO ASHES WAS FIRST PRESENTED BY THE ENGLISH STAGE COMPANY AT
THE AMBASSADORS THEATRE.

 **Kennedy Theatre**
UNIVERSITY OF HAWAII AT MĀNOA

PRIMETIME
2003-2004 SEASON
EARLE ERNST LAB THEATRE



DIRECTED BY SAMMIE CHOY



DEPARTMENT OF THEATRE AND DANCE COLLEGE OF ARTS AND HUMANITIES

ARTISTIC STAFF

DIRECTOR: SAMMIE CHOY
ASSISTANT DIRECTOR: STAN EGI
SCENIC DESIGNER: JUNGHA HAN
LIGHTING DESIGNER: VINCE LIEM
COSTUME DESIGNER: NARA M. M. S. CONATY
HAT DESIGNER/MILLINER: SANDRA FINNEY

CAST

FAR AWAY

YOUNG JOAN: TEILIANA PELEKAI
HARPER: HILARY HADLEY WRIGHT
JOAN: MIRIAM NEUMAN
TODD: JOHN MICHAEL STRIFFLER
PRISONERS: CORINE ARMSTRONG, RANDEE CHANG, JEANNIE CHOI, TERESA DAY,
WESLEY DODD, CHRISTA ELEFTHERAKIS, MIA MORIGUCHI, BRITNEY SUSSMAN,
TANYAH TAVORN, NATHAN TOWNSEND

ASHES TO ASHES

REBECCA: GWEN MONTGOMERY
DEVLIN: D. OMAR WILLIAMS

SETTING

FAR AWAY

I: HARPER'S HOUSE. NIGHT.
II: SEVERAL YEARS LATER. A HAT MAKER'S.
III: SEVERAL YEARS LATER. HARPER'S HOUSE. DAYTIME.

ASHES TO ASHES

A HOUSE IN THE COUNTRY

ACKNOWLEDGEMENTS

W. DENNIS CARROLL, LURANA O'MALLEY, MARKUS WESSENDORF,
PHYLLIS S.K. LOOK, THE GRANDE DAMES, KYLE LEMOI FOR *FAR AWAY*,
ELSIE K. CHOY

DIRECTOR'S NOTES

Both plays deal with the question of our response to power, a quality which can be politically, as well as sexually desirable. We may allow ourselves to be seduced out of honest admiration, boredom, fear, or titillation. And we might be particularly vulnerable at certain times: as children, when we're in love, or when societal upheaval threatens our security. Whatever the reason, power is tremendously attractive, and we've all felt its allure. Pinter and Churchill have created carefully drawn environments that, in microcosm, lay out the consequences of misguided trust and complicity. These are the things that interest me: whom the characters trust and why, how they react to shows of strength, and what they do when confronted with the results of tragically misplaced confidence. The two plays employ an economy of language in which what is said between the lines, with glances and movement, with pauses and silence, tells the full story.

So that's what this evening is about. That, and the daily struggle to cope. Most of us are doing that, really. And if we're lucky, we're not alone. So regards to all of you. Be kind to one another. And clean up when you're done.

ABOUT THE PLAYWRIGHTS

Caryl Churchill has challenged radio, television, and theatre audiences for over 30 years, producing a body of work that confronts modern society with its own contradictions and maladies. Her award-winning plays include *Cloud Nine*, *Top Girls*, and *Serious Money*. She has been associated with such theaters as the Royal Court and the Royal National Theatre in London, and represented on Broadway and many other international venues.

Harold Pinter's plays combine a strong interest in politics with one of the most distinctive voices of 20th century Western Theatre. His seminal early works include *The Homecoming*, *Old Times*, *Betrayal*, and *The Caretaker*. Recent works have combined his strong interest in politics and human rights issues while maintaining what has been called a "comedy menace."

FRONT OF HOUSE INFORMATION

THE PLAY WILL BE PERFORMED WITH ONE INTERMISSION BETWEEN PLAYS.

THERE WILL BE A POST-SHOW DISCUSSION IMMEDIATELY FOLLOWING THE FRIDAY, APRIL 2 PERFORMANCE.

FOR LARGE PRINT PROGRAMS OR ANY OTHER ACCESSIBILITY REQUESTS, PLEASE CONTACT THE HOUSE MANAGER OR CALL THE KENNEDY THEATRE BOX OFFICE AT 956-7655 (VOICE/TEXT).

PLEASE SILENCE ALL PAGERS, PHONES AND DIGITAL WATCHES. NO PHOTOGRAPHY OR VIDEO RECORDING IS PERMITTED. PLEASE REFRAIN FROM EATING, DRINKING OR SMOKING IN THE THEATRE.

IN FOLLOWING WITH UNIVERSITY OF HAWAII POLICY, SMOKING IS NOT PERMITTED WITHIN 20 FEET OF THE KENNEDY THEATRE BUILDING. YOUR ASSISTANCE IN HELPING US ADHERE TO THIS POLICY IS GREATLY APPRECIATED.