



Serving the students of the University of Hawai'i at Mānoa since 1922

SUNNY
 H:76° L:67°

Cheater!
 Are you an infidel?
 Commentary | Page 3

'Ono 101
 Thanksgiving leftovers
 Mixed Plate | Page 4

The Wild World of Internet Dating
 Trials, Tribulations and ... Triumph?
 Cartoons | Page 9

WEDNESDAY
 DEC. 3, 2008

UH lab receives explosive research contract



GNU

The U.S. Army awarded UH's Applied Research Laboratory almost \$1 million to develop new techniques for detecting improvised explosive devices, the leading cause of death for soldiers serving in Iraq and Afghanistan.

By Kris DeRego
 Ka Leo Managing Editor

University of Hawai'i scientists are developing a new method for detecting improvised explosive devices, thanks to a lucrative grant awarded to the college's Applied Research Laboratory.

The 18-month contract, sponsored by the U.S. Army, allocates \$980,334 for researching the use of multiple optical methods to detect the chemical signature of improvised explosive devices prior to detonation. Roadside bombs are the leading cause of death for American troops serving in Iraq, triggering approximately 70 percent of the war's 4,207 casualties, according to Pentagon estimates.

"IEDs have taken a heavy toll on both

soldiers and civilians in Iraq and Afghanistan," said Jim Gaines, UH vice president for research. "Having a reliable method of standoff detection would provide much greater safety for both civilians and military personnel."

Optical remote sensing is favored as a way to detect chemical signatures in water and the atmosphere. Until recently, however, optical technology suffered from high operational costs and poor performance in environments with impaired visibility.

"Optical methods have proven problematic in the past," said Benjamin Dunley, a weapons development consultant for Lockheed Martin. "Recent advancements in the fiber optics industry have reduced costs, though, and made creative innovations, like signature-based radiation scanning, more fea-

sible for defense contractors."

Seven UH scientists will partner with investigators from Arkansas State and Florida A&M universities to conduct the explosives detection studies, said university officials, who emphasized that no explosive materials will be employed by researchers or stored at campus facilities during the experiments.

The contract is the second task order awarded to the Navy-affiliated Applied Research Laboratory, which was established in 2007 to perform basic national defense research. In September, the laboratory received \$850,000 from the U.S. Army Corps of Engineers to examine the impact of ecological variations upon discarded munitions at Ordnance Reef off

See Research contract, page 2

CampusBeat

Compiled by Michelle White
 Ka Leo Senior Staff Reporter

Sunday, Nov. 2

• Between 1:30 and 3:30 a.m., three students were cited for disorderly conduct. The incidents occurred at the Hale Aloha courtyard, Frear Hall and Hale Wainani. All three students were referred to the vice chancellor.

Wednesday, Nov. 5

• A student reported that someone stole an iPod and cash from the second floor in Sinclair Library. The victim had left the items unattended at about 1 p.m.

Friday, Nov. 7

• Even with the recent drop in gas prices, someone stole a gas-saving mo-ped from a student. The silver Roxy 50 was taken from the rack at Shidler College at 9 p.m.

Tuesday, Nov. 11

• Five students, all of whom were under 21, were caught drinking alcohol behind the law school. The alcohol was confiscated and the students were referred to the vice chancellor.

Wednesday, Nov. 12

• A resident at Hale Wainani was assaulted by a man at 4 a.m. The suspect was 6 feet tall and weighed approximately 200 pounds. He had short, kinky black hair and a tribal tattoo on his shoulder. The victim declined notifying police and an ambulance.

See CampusBeat, page 2



INSIDE TODAY

News	2
Commentary	3
Mixed Plate	4
Sports	6
Cartoons	9
Puzzles & Classifieds	10

WEDNESDAY SURF OUTLOOK

◆ **HONOLULU TIDES**
 HI 7:46 a.m. | 9:16 p.m.
 LO 3:42 p.m. | —

◆ **HALE'IWA TIDES**
 HI 6:44 a.m. | 8:14 p.m.
 LO 1:37 a.m. | 10:45 p.m.

NORTH 10-15
SOUTH 1-2
WEST 6-10
EAST 1-2
 WINDS 5-10 mph, light/var.

Wave heights reported Hawaiian style, about half face heights.

Surf along north- and west-facing shores may briefly drop below advisory levels late today.

SOURCE: NATIONAL WEATHER SERVICE

LEO'UILA: KA LEO PODCAST ONLINE

InternationalBeat

Mumbai terrorists linked to Pakistan



Relations between India and Pakistan have become strained, following a terrorist attack in Mumbai.

MCT CAMPUS

Over the Thanksgiving weekend, terrorists in Mumbai targeted two luxury hotels, a Jewish center, a cafe and a railway station, killing 172 people and injuring over 300. Officials believe the terrorists came by boat from Pakistan, which has had a tumultuous relationship, including three wars, with India over the disputed region of Kashmir.

The attacks may have been a call by terrorists for India to remove itself from Kashmir, which is currently controlled by India, Pakistan and the People's Republic of China. India and Pakistan are trying to keep peace in their regions despite the attack, calling for diplomatic rather than militaristic action.

Russia denies association with attack on Georgian and Polish leaders

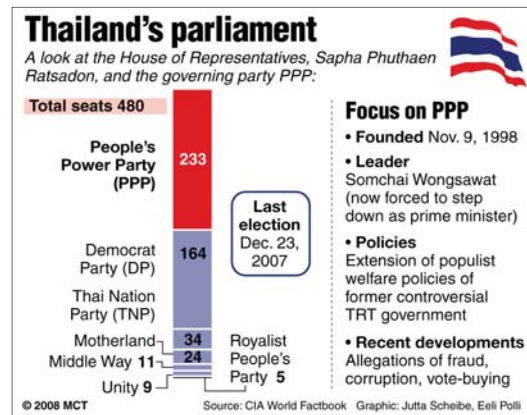
Shots were fired at the motorcade carrying the prime ministers of Georgia and Poland near the tumultuous South Ossetia region. Reports state that the shots came from the Russian side of the border, where the Russian military has been patrolling since the brief war several months ago. Russian officials, however, deny that the shots came from troops stationed along the border.

North Korea suspends train to South Korea

After a year and a half of service, North Korea

has halted the train that carried passengers across the two-mile zone between North and South Korea. The train service was the first regular form of transportation between the two countries in 50 years. North Korea's decision to halt the train is in response to new, aggressive government policies enacted by South Korea.

Thai prime minister steps down, protesters end occupation



MCT CAMPUS

Protestors at Thailand's central airports disbanded after Prime Minister Wongsawat resigned.

After thousands of protesters flooded the international airport in Bangkok, Thailand experienced a paradigm shift in its politics as its ruling party dissolved. On Tuesday, Prime Minister Somchai Wongsawat stepped down after he was found guilty of electoral fraud by Thailand's constitutional court.

The protesters, a part of the People's Alliance for Democracy, occupied the airport for over a week, clashing with police and causing thousands of tourists to become stranded. With their victory, the protesters have pledged to leave the airport.

While Wongsawat was immensely popular among the rural demographic of his country, the People's Alliance for Democracy opposed Wongsawat because of his alliance with the exiled Thaksin Shinawatra, the former prime minister accused of abusing power.

Research contract

From page 1

the Wai'anae coast.

UH administrators hope that successful completion of both task orders will initiate funding for similar projects in the future.

"This could be the first in a sequence of task orders if the initial studies prove interesting," Gaines said. "That could, in turn, enhance the university's budget and the local economy."

The Department of Defense restricted total research subsidies to \$26.2 million and renounced classified research for the first three years of the Applied Research Laboratory's existence. If the pace of contracted research remains steady, the Naval laboratory should reach its \$26 million target by 2011.

Not everyone agrees that the explosives detection contract is beneficial to UH, however, despite revenue shortfalls resulting from budget cuts and sharp enrollment declines at most UH campuses, including UH Mānoa. Some critics feel that the research grant violates the core academic values associated with higher education.

"This IED detection task order is aimed at improving the U.S. military's ability to sustain its occupation of other people's countries," said Kyle Kajihiro, program director for the American Friends Service Committee. "This is not the mission that UH should serve."

According to Kajihiro, university scientists could be contracted to perform military research without the



GNU

Roadside bombs typically combine conventional artillery with a detonating mechanism.

Applied Research Laboratory.

"Under normal circumstances, the university would have to compete for money," said Kajihiro. "The Naval laboratory allows the military's pork pipeline to flow directly from congressional earmarks to the university, giving military-linked researchers their own private ATM."

University officials maintain that the benefits of the contract extend beyond the college's finances, however, and address the military's need for enhanced protection.

"The research is consistent with the university's mission of solving society's problems," said Gregg Takayama, UH director of community and government relations. "The primary beneficiary will not be UH Mānoa, but the civilians and military personnel who regularly face injury and death from hidden explosive devices."

CampusBeat

From page 1

• A visitor was arrested after assaulting a security guard at Hale Kahawai at 3:15 p.m.

• A car was stolen from the third floor of the parking structure. The student parked the vehicle at 8:30 a.m. and discovered it missing at 4 p.m.

• A man is suspected of attempting to burglarize a room at the Hawai'i Institute of Geophysics building. The amateur burglar managed only to damage the door.

Wednesday, Nov. 26

• A man and a woman, suspected

of stealing a backpack and an 'ukulele from a locker at the UH Lab School at about 11:30 a.m., were confronted by the school's private security guard. The female threatened to run the guard over. The guard was able to get the 'ukulele back before the couple fled in a vehicle. As they were leaving the Lab School parking lot, the suspects rear-ended a red Ducati motorcycle, causing injury to the rider, a UH professor. The suspects then moved the fallen motorcycle out of the way before fleeing the scene. The motorcyclist was transported to the hospital via ambulance.

KALEO

Ka Leo O Hawai'i
University of Hawai'i at Mānoa
1755 Pope Road, 31-D
Honolulu, HI 96822

Newsroom (808) 956-7043
Advertising (808) 956-3210
Facsimile (808) 956-9962
E-mail kaleo@kaleo.org
Web site www.kaleo.org

Ka Leo O Hawai'i is the campus newspaper of the University of Hawai'i at Mānoa. It is published by the Board of Publications three times a week except on holidays and during exam periods. Circulation is 10,000. Ka Leo is also published once a week during summer sessions with a circulation of 10,000. Ka Leo is funded by student fees and advertising. Its editorial content reflects only the views of its editors, writers, columnists and contributors, who are solely responsible for its content. No material that appears in Ka Leo may be reprinted or republished in any medium without permission. The first newsstand copy is free; for additional copies, please come to the Ka Leo Building. Subscription rates are \$36 for one semester and \$54 for one year. © 2008 Board of Publications.

ADMINISTRATION

The Board of Publications, a student organization chartered by the University of Hawai'i Board of Regents, publishes Ka Leo O Hawai'i. Issues or concerns can be reported to the board (Grant Chartrand, chair; Devika Wasson, vice chair; or Ronald Gilliam, treasurer) via bop@hawaii.edu. Visit hawaii.edu/bop for more information.

EDITORIAL

Editor in Chief Taylor Hall
Managing Editor Kris DeRego
Chief Copy Editor Kyle Mahoney
Associate Copy Editor Nichole Catlett
News Editor Abigail Trenhaile
Associate News Editor Kelli Miura
Features Editor Vanessa Sim
Associate Features Editor Steven Tonhat

Commentary Editor Bali Fergusson
Sports Editor Ashley Nonaka
Associate Sports Editor Russell Tolentino
Comics Editor Will Caron
Design Editor Nicole Gilmore
Photo Editor Kent Nishimura
Web Editor Alexis E. Jamison

ADVERTISING

Ad Manager Erica Hwang

Business office parallel to the bottom entrance of the Bookstore.

(In)fidelity?

By Jay-Me Morita

Ka Leo Contributing Writer

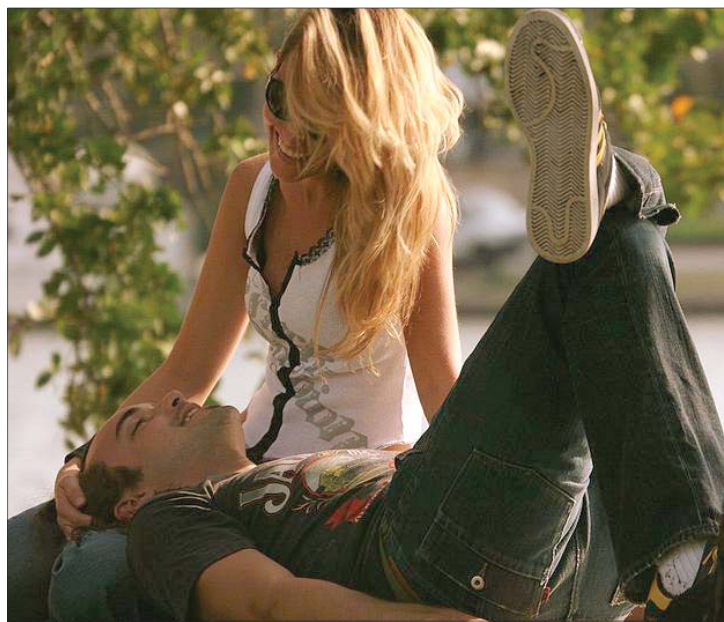
Has someone ever mysteriously captured your attention? Someone who couldn't escape your thoughts? Would you ever pursue that person, even if you were already with someone else?

We see images of infidelity all of the time, some of them much more vivid than the one characterized here. Is the whole world really sleeping around? If so, for what reasons?

Many people today struggle with being faithful. A recent survey on MSNBC.com found that nearly half of all people have, at one point, cheated on their significant other.

There are several major factors that may lead a person to engage in an affair. The reasons span from the excitement of sneaking around to the need to feel desirable. The two most prominent reasons, however, deal with sex and emotions.

About 80 percent of the men who cheated, did so simply



GNU/FLICKR

Happy young couples, like this one, are often seen prancing about college campuses, although the limitations of fidelity may soon put a damper on their carefree spirits.

Let's face it: At our age, monogamy probably isn't in anyone's best interest. Besides the pure urge to breed, this is probably due to the lack of stability in our lives. We aren't really looking to establish long-term rela-

tionships since we're not sure of what's in store for us. begins with one thing: a choice. You choose to be patient, understanding, forgiving and willing to encourage growth in another person. Those are the things that make a relationship work.

I'm not trying to say that

“About 80 percent of men who cheated did so simply because they wanted better sex or just more sex.”

because they wanted better sex or more sex. On the other hand, about 40 percent of women felt motivated to cheat because they were seeking more emotional attention.

Some of us have already dealt with the same conditions that many use to warrant an illicit affair. Committing yourself to a single individual, especially when you're young, can be a stressful and even daunting responsibility.

tionships since we're not sure of what's in store for us.

But what provides us with the justification for cheating? The bottom line is that people seek extra companionship because they feel that their partners are not providing for their needs.

If there's anything I've learned over the course of my three-year relationship, it's that being with someone exclusively

monogamy is best or that you can't feel fulfilled with multiple partners, but if you are trying to create an intimate relationship between you and one other person, my advice to you is this:

Be willing to give up your emotions: Sing a song to your partner, write a poem, give a gift or just give it up. In the best relationships, people are open with each other about their expectations.

Apropos

“When you struggle with your partner, you are struggling with yourself. Every fault you see in them touches a denied weakness in yourself.”

—Deepak Chopra, Indian-American doctor and writer (b. 1946)

Have a dental cleaning, check-up for dental decay & gum disease. Come in for a dental hygiene screening.

UHM Dental Hygiene Clinic
Hemenway Hall, Rm 200
Tuesday, Wednesday, Thursday
8:30 - 11:30 am 1:00 - 3:30 pm

Volunteer Opportunities

Lokahi Giving Project

The Lokahi Giving Project needs lots of volunteers from now until Christmas Day at the KHON Lokahi office, at our distribution center in Kakaako, and at various community events. Call 591-4295 or 591-4298 to schedule for any day or evening, or e-mail mjones@khon2.com. All skills are needed!

The Contemporary Museum

Volunteers are needed at the Contemporary Museum to fill the following positions: Administration, Visitor Information Desk, Contemporary Café, Exhibitions, Library, Museum Shop, and Special Events. Contact Sheryl Kramer at 237-5218 or skramer@tmhi.org for more information.

American Lung Association Hawaii

Individuals wanted to help with the American Lung Association Hawaii's various programs on tobacco cessation prevention, asthma education, and lung health. Contact Debbie Otto at 537-5966x216 or xtobacco@ala-hawaii.org.

Service Learning Program | (808) 956-4641

CAMPUS SPECIAL



LARGE 14" PIZZA
with 1 Topping (w/valid Student I.D.)

ONLY \$10⁹⁹

Original Crust or Pan Delivery Only
Not valid with any other offer. Valid only at participating locations.
Customer pays all applicable sales tax. Limited delivery area.
Additional toppings extra. Offer expires 12/31/08.

1099ML2

EXTRA LARGE PIZZA
with up to 2 Toppings

ONLY \$12⁹⁹

Original, Thin Crust or Pan Delivery Only
Not valid with any other offer. Valid only at participating locations.
Customer pays all applicable sales tax. Limited delivery area.
Additional toppings extra. Offer expires 12/31/08.

1299XL2

2 LARGE 14" PIZZAS
with 2 Toppings

ONLY \$21⁹⁹

Original, Thin Crust or Pan Delivery Only
Not valid with any other offer. Valid only at participating locations.
Customer pays all applicable sales tax. Limited delivery area.
Additional toppings extra. Offer expires 12/31/08.

2199L2

**FOR DELIVERY CALL
979-PAPA • 983-7272**

'Ono 101: Turkey Leftover Special

By Chris Mikesell

Ka Leo Food Columnist

The turkey has been carved, the sides stuffed down and now you're left with loads of Thanksgiving roast beast in your freezer. Dark meat, white meat, it all starts to look the same after a while - if you don't know what to do with it, that is. Here's a list of great things you can do with your leftover Thanksgiving turkey:

1

If you still have your turkey carcass - the bones left over from carving up your turkey, turkey wings, that stuff - then you can make an awesome stock with it. Just let it simmer for a few hours, or toss it in the slow cooker overnight, and strain out the solids afterwards. Cubed up turkey breast, dried basil and oregano, some noodles and roasted tomatoes, garlic, carrots and celery turn that stock into an amazing minestrone.

2

If you're not in the mood for soup, take that stock and simmer it down by half or so and freeze it in ice cube trays. Bag and tag it and you have the makings of instant sauce heaven. A couple cubes of stock, a dash of lemon juice or vinegar, a pat of butter and you have a beurre blanc without breaking a sweat.

3

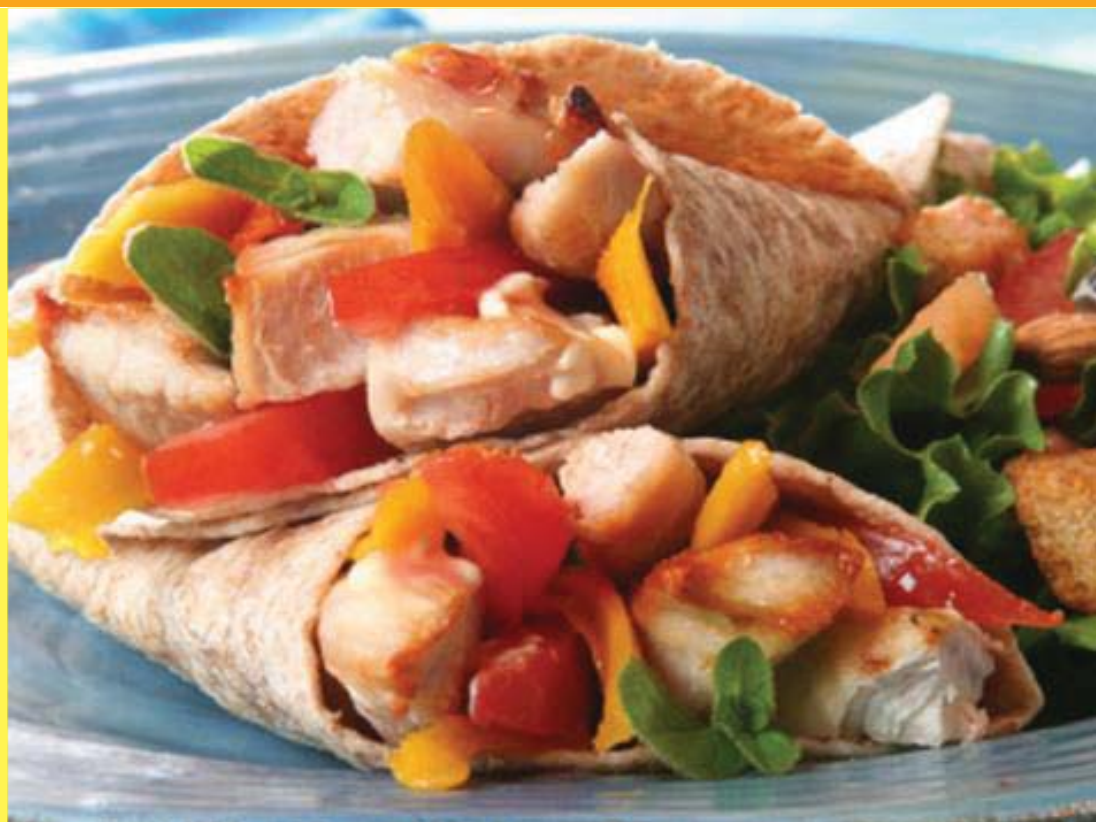
If you have a good deal of turkey breast lying around and you're sick of the same sandwiches - this happens to all of us, even those of us with awesome brined turkeys - try a twist on turkey salad by making post-Thanksgiving gunkan maki sushi: chop up some turkey breast and mix it with some mayo, a bit of sugar, a pinch of salt and a dab of wasabi. Use that mix to top your battleship sushi for a totally un-Thanksgiving spin on your turkey breast.

4

If everyone ate all the white meat and you have oodles of dark meat in your freezer, don't despair. That's the perfect filling for turkey tacos! The key to successful post-Thanksgiving turkey taco flavor is to beat the dark meat over the head with the brooding latin flavors in chiles, cumin, cilantro and citrus. It wouldn't hurt to grind three or four ancho chiles in a converted coffee grinder (I keep one just for coffee and one just for spices), along with a teaspoon of cumin. Toss that powder into a simmering braise, courtesy of the aforementioned stock cubes or canned stock. This spicy sensation will make you forget about cranberries and fill your carnitas craving.

5

Suppose you're out of everything else, your stuffing section was raided, your side dishes siphoned off to relatives, your poor cranberry sauce reserves pillaged and you come upon your last lonely bag of turkey and final frozen dose of giblet gravy, wanting to relive those days of endless turkey. If you're in the mood to reconstruct Thanksgiving in December like a home-sick Dr. Frankenstein, you can: take four dinner rolls and cube them up into half-inch cubes, toss with a tablespoon of olive oil and a teaspoon of dry sage, then pan-toast them, stirring often, until lightly browned all over. Toss those into a small microwave-safe casserole dish with a lid, top with the last of your turkey leftovers and gravy, and microwave for 6 minutes with the lid on. When you open it, you'll be greeted with a warm whiff of Thanksgiving all over again.



KABOOSE.COM

Leftover Thanksgiving turkey can be reused to make a delicious and creative dish for any occasion.

Eco-friendly study tips make final exams greener

By Cathy Wilson

U-WIRE The Post, Ohio University

Final exam week is around the corner and it can be a stressful time. Amid pages of reading, endless facts to memorize and papers to write, it might seem impossible to fit in some time for the environment.

Luckily, this hectic time at the end of the semester contains opportunities for you to successfully study in an eco-friendly way. In a light-hearted response to the chaotic study sessions soon to ensue, here are some tips to green-up finals week.

Hold off on index cards

For fill-in-the-blank, identification or multiple-choice tests, flashcards are the study tool of choice. These types of exams involve memorizing a lot of information or being able to recall facts by just seeing a word or two. This usually means buying a plastic-packaged pile of index cards to assist in this task.

Instead of opting for the index cards, look for scrap paper that you can use. Cutting strips and folding them in half so that both sides are blank will save paper, plastic and money. If the test is not cumulative, there are probably old handouts that otherwise would have gotten little use for the final exam.

Choose your caffeine wisely

Caffeine is a college student's best friend. Whether it be coffee, soft drinks or energy drinks, we all have used a caffeine kick to get a few extra hours of studying done when we feel our eyelids getting heavy.

When it comes to coffee, there are many shops that offer fair trade coffee. A lot of them are locally owned as well, so

you are supporting the local economy as well as fair wages for the farmers who harvested the coffee beans. For energy drinks, make sure the refreshment comes in an aluminum can because it is most efficient of all drink containers when recycled.

Go easy on the printer

There's nothing more frustrating than having to print out 30-page articles in order to study for a test, and it can get costly and wasteful. Each page costs money to print at the library, and printing from home means buying paper and ink cartridges. Often, after highlighting the important information, it's evident that a fraction of those pages are actually important for studying.

One solution is to read online and take notes on a piece of scrap paper. Not only are you eliminating the excessive paper use, but you're rewriting notes and retaining information, which can be more beneficial than highlighting your notes.

If highlighting is your method of choice, read the notes and print out the pages that have necessary information. You're retaining information by re-reading it, and you can be sure all paper you use has important information.

Take some time to relax

Spending hours upon hours reading and going through notes without a break doesn't give your brain time to rest and process information. For at least 15 minutes every hour or so, take a breather and do something calming. Hit up a yoga class or go for a stroll around campus and enjoy the outdoors. Becoming hooked on video games or "America's Next Top Model" marathons will waste energy while also slowing down your own productivity.



PHOTO COURTESY CATALYST STUDIOS

Index cards are easy to use when studying for an exam, but require a lot of paper. Try finding new and creative methods for making index cards, like using pieces of scrap paper, which will benefit not only the environment, but also your wallet.

SITE THIS!

Need help determining how to iron a shirt properly? Want to learn more about comic book collecting? How about figuring out which workout best suits you?

With the Web site [expertvillage.com](http://www.expertvillage.com), viewers are given helpful hints and tips from self-proclaimed experts on a specific subject. Whether it's learning how to cook eggs benedict or how to pop and lock, the site has a video for you.

YOUTUBE PICK OF THE WEEK

From the mind of Seth MacFarlane, creator of "Family Guy" and "American Dad," comes "Seth MacFarlane's Cavalcade of Cartoon Comedy." A joint effort with Burger King, the YouTube series features short cartoons from MacFarlane in the same style that has made his other shows so popular.

To check out MacFarlane's cartoons, visit his YouTube profile at youtube.com/sethcomedy

FUN FACTS OF THE WEEK

- There is a law on the books in Detroit that states that "alligators may not be tied to fire hydrants."

- "Go" is the shortest complete sentence in the English language.

- An inch (2.5 centimeters) of rain water is equivalent to 15 inches (38.1 centimeters) of dry, powdery snow.

Journey to Final Four begins in LA



KENT NISHIMURA • KA LEO O HAWAII

Tara Hittle, Nickie Thomas, Jessica Keefe and Jamie Houston pose for photos after their Senior Night victory over the Mustangs of Cal Poly. The No. 6 Rainbow Wahine are headed on the road for the postseason once again.

By Russell Tolentino

Ka Leo Associate Sports Editor

Hawai'i is headed for Hollywood.

The No. 6 Rainbow Wahine volleyball team (28-3), seeded seventh, will open the 2008 NCAA Division I Women's Volleyball Championship in Los Angeles against the Belmont Bruins (25-7). The first round match is scheduled for Friday, Dec. 5, at 5 p.m. (3 p.m. HST).

The No. 12 USC Trojans (16-11) are hosting the first and second rounds at the Galen Center and will play the No. 15 San Diego Toreros (23-4) in the other first round match.

The winners will meet on Saturday, Dec. 6, in the second round at 6 p.m. (4 p.m. HST), while the losing teams' seasons will come to an end.

"I'm pretty excited," senior libero Tara Hittle said. "Obviously it's the playoffs, so no (team) is going to be easy."

And for Hittle, there is a bit more incentive to make it past the first and second rounds.

Should the the Rainbow Wahine advance, they will head to Fort Collins, Colo., for the regional hosted by Colorado State. Hittle is from Colorado Springs.

"I'm pumped to possibly play in my home state," Hittle said. "But first we've got to take care of the first and second rounds."

The 'Bows earned the Western Athletic Conference's automatic bid in the tournament by winning the conference's tournament title on Nov. 23. Belmont won the Atlantic Sun Conference and San Diego won the West Coast Conference. USC earned an at-large bid out of the Pac-10.

"At this point, there is no next game," said senior outside hitter Jessica Keefe. "It's win or go home."

This will be the 16th-straight appearance in the NCAA tournament and 27th overall for the 'Bows.

Fellow WAC school New Mexico State earned an at-large bid and will open with St. Mary's in Berkeley, Calif. Eight teams on the 'Bows' schedule advanced to the NCAA tournament, including top-seeded Penn State, No. 5-seed Washington, No. 6-seed Minnesota and No. 14-seed UCLA.

Houston tops 2,000-kill mark

Senior outside hitter Jamie Houston made her final appearance in the Stan Sheriff Center a special one.

As the No. 6 Rainbow Wahine volleyball team swept the Cal Poly Mustangs 25-17, 25-19, 25-23 last Friday, Houston became the second Rainbow Wahine, after All-American and Olympic-medalist Kim Willoughby, to reach 2,000 career kills.

After her 15-kill performance against the Mustangs, Houston has racked up 398 kills this season and 2,009 kills in her career; Willoughby finished her collegiate career with 2,598.

WARRIORS BOWL-BOUND | UH gears up for Hawai'i Bowl



PHOTO GALLERY
ON THE WEB AT
WWW.KALEO.ORG



KENT NISHIMURA • KA LEO O HAWAII

Head coach Greg McMackin accepted an invitation for the Warriors to play in the Sheraton Hawai'i Bowl on Dec. 24 after the team's victory over the Washington State Cougars on Nov. 29. Kickoff for the Christmas Eve bowl game is set for 3:30 p.m. HST.



Graduate & Law Schools Fair

Thursday, December 4, 2008
10:00 am – 1:30 pm
Campus Center Courtyard & Mall

Meet representatives from the following schools to learn about their programs, admission requirements, and financial aid:

GRADUATE PROGRAMS:

U. of Hawai'i at Manoa College of Education
U. of Hawai'i at Manoa College of Engineering
U. of Hawai'i at Manoa Dept. of Urban & Regional Planning
U. of Hawai'i at Manoa Institute for Marine Biology
U. of Hawai'i at Manoa School of Nursing & Dental Hygiene
U. of Hawai'i at Manoa School of Ocean & Earth Science
U. of Hawai'i at Manoa School of Social Work

Argosy U. of Hawai'i Campus
Ross U. School of Medicine & Veterinary Medicine
Samuel Merritt College
U. of the Pacific School of Pharmacy & Health Sciences

LAW SCHOOLS:

California Western School of Law
Chapman U. School of Law
Drexel U. School of Law
Golden Gate U. School of Law
Gonzaga U. School of Law
Lewis & Clark College of Law
Loyola Law School
St. Thomas U. School of Law
Santa Clara U. School of Law
Seattle U. School of Law
Southwestern U. School of Law
Texas Southern U. Thurgood Marshall School of Law

Thomas Jefferson School of Law
Texas Wesleyan U. School of Law
U. of California Hastings College of Law
U. of Denver Sturm College of Law
U. of Hawai'i at Manoa William S. Richardson School of Law
U. of San Francisco School of Law
U. of Texas at Austin School of Law
U. of the Pacific McGeorge School of Law
Whittier College of Law
Willamette U. College of Law



Queen Lili'uokalani Center for Student Services, Room 212
2600 Campus Road, Honolulu, HI 96822
Counter/Library Hours: Monday – Friday / 8:00 AM – 4:00 PM

| T | 808.956.7007
| F | 808.956.4082
| TTY | 808.956.9318
<http://cdse.hawaii.edu>
cdse@hawaii.edu

'Bows look to continue winning streak on first road trip

By Drake Zintgraff
Ka Leo Senior Reporter

The University of Hawai'i Rainbow Warriors (3-2) are going on their first road trip of the season this Monday, Dec. 8, to face the Illinois Fighting Illini (6-0) in Champaign, Ill. The 'Bows will be looking to pick up their first-ever win against the Illini, who lead the all-time series 5-0.

"It's going to be a long trek, but we got a couple days to rest up. We will go into a building that is very difficult to win in. It just prepares us for what we have to face when we go into conference play," said Head coach Bob Nash about the upcoming road trip.

"We have to go into inclement weather and we have to travel. All

these things will make us stronger as a team. ... We have kind of figured things out at home and now we have to figure things out on the road. ... This will give us an opportunity to test ourselves," Nash said.

The Rainbow Warriors are facing the Illini for the second straight year, after the Illini pulled off a two-point win, 79-77, last year at the Stan Sheriff Center.

Hawai'i is currently on a three-game winning streak and above .500 for the first time in the Bob Nash era.

After winning the first six games of the season, Illinois is looking to turn its program around. Last season, Illinois finished 16-19 and did not qualify for postseason play for the first time this century.

Illinois returns three starters

and is led by sophomore forward Mike Davis, who currently leads the team in points at 12.7 per game and rebounds at 9.7 per game. Illinois has games against Clemson and Georgia before Monday's matchup against the 'Bows.

After this one-game road trip, the Rainbow Warriors will return to Hawai'i for a nine-game home stand. The home stand will include the Outrigger Hotels Rainbow Classic and the start of the Western Athletic Conference play.

Prairie View A&M Rundown

The Rainbow Warriors completed their opening home stand this past Monday, Dec. 1, with a 78-70 victory against the Prairie View A&M Panthers (3-5) of the Southwestern Athletic Conference

at the Stan Sheriff Center. Prairie View A&M pulled out to an early lead in the first half, leading by as much as 11 points going into halftime.

The 'Bows took the lead for the first time in the game with 12:51 remaining, after junior forward Roderick Flemings nailed a jumper. The game went back and forth, with the Panthers tying up the score four times in the closing run, but Hawai'i finished strong.

In the second half, the Rainbow Warriors went 14 for 16 from the field and had 43 free-throw attempts. Prairie View A&M only had 20 attempts.

"We were executing the offense a lot better in the second half. We were getting to the line a lot. If we weren't scoring it, we were getting fouled," said

junior forward Bill Amis. Flemings led the Rainbow Warriors' second-half run, recording 19 of his 22 points after the break.

"I just got it going, my teammates got it to me and I just knocked some shots down. ... I felt good. That was the best I have felt this year," said Flemings, who had a double-double with 13 rebounds for the game to go along with his 22 points. Amis also had a double-double with 16 points and 12 rebounds to go along with his six blocks.

The Rainbow Warriors' game against the Illinois Fighting Illini will take place at 3:05 p.m. HST, on Monday, Dec. 8, in Champaign, Ill. at Assembly Hall.



AUSTIN LARSON • KA LEO O HAWAII

Prairie View A&M had its hands full with Bill Amis, who finished with 16 points, 12 rebounds and six blocks.

Interested in going to Law School? 20 West Coast Consortium 08 Hawaii Caravan

Meet law school representatives in Hawaii.
Ask questions about Admissions and Financial Aid.

Admission is free.

For more information, contact lawadmissions@usfca.edu
or call 415.422.6586.

Meet Representatives from:

- California Western School of Law
- Chapman University School of Law
- Drexel University School of Law
- Golden Gate University School of Law
- Gonzaga University School of Law
- Lewis & Clark Law School
- Loyola Law School Los Angeles
- Santa Clara School of Law
- Seattle University School of Law
- Southwestern University School of Law
- St. Thomas University School of Law
- Texas Wesleyan University School of Law
- Thomas Jefferson School of Law
- Thurgood Marshall University School of Law
- University of California Hastings College of the Law
- University of Denver - Sturm College of Law
- University of San Francisco School of Law
- University of Texas - Austin School of Law
- Univ. of the Pacific - McGeorge School of Law
- Whittier Law School
- Willamette University College of Law

Brigham Young University - Hawaii

Tuesday, December 2, 2008
11:00 am to 2:00 pm
Aloha Center

University of Hawaii - Hilo

Wednesday, December 3, 2008
10:30 am to 2:00 pm
Campus Center Plaza

University of Hawaii - Manoa

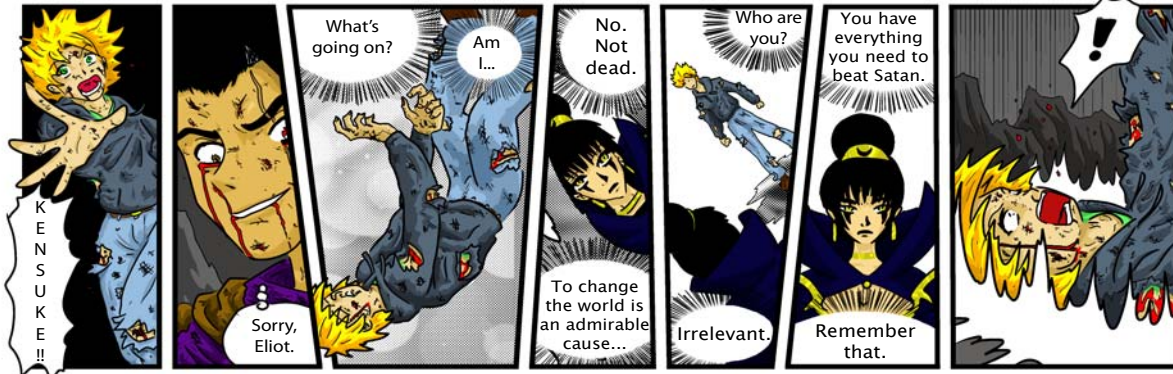
Thursday, December 4, 2008
10:00am to 1:30 pm
Campus Center Courtyard

Hawaii Pacific University

Friday, December 5, 2008
10:00 am to 2:00 pm
Fort Street Mall

Higher Education Second Session

By Will Caron

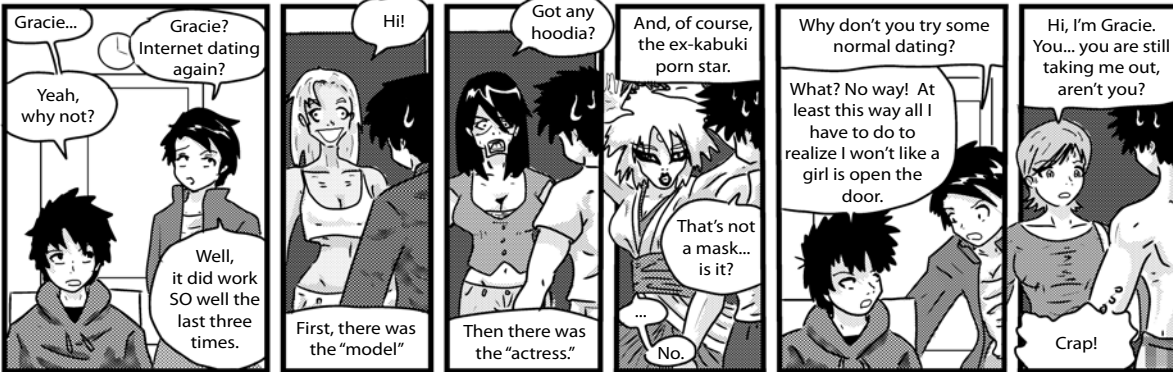


Rival by Toby Idian



The Wild World of Internet Dating

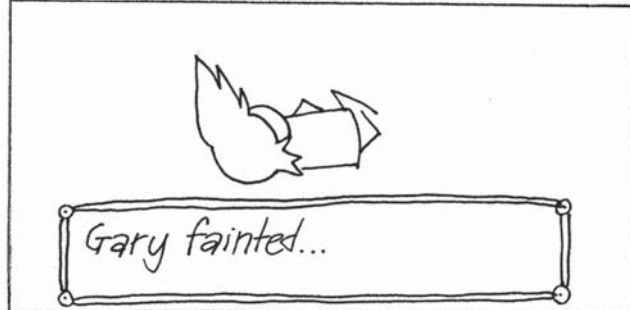
By Will Caron



Coffee Talk

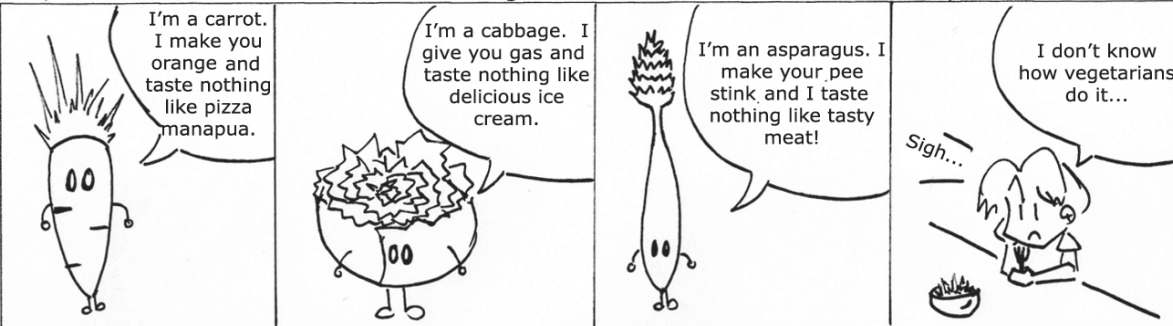
“As Seen on TV”

by Cynthia McCoy



“Oh, You SO Smaht!” : One Talk wit' da Vegetables

By Steven Nishimoto



Note: Maintaining weight is hard, and leaves me hungry and grouchy... :c

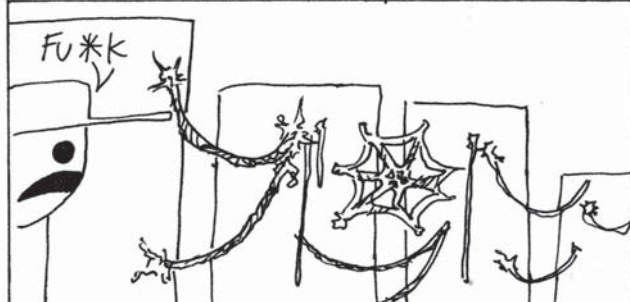
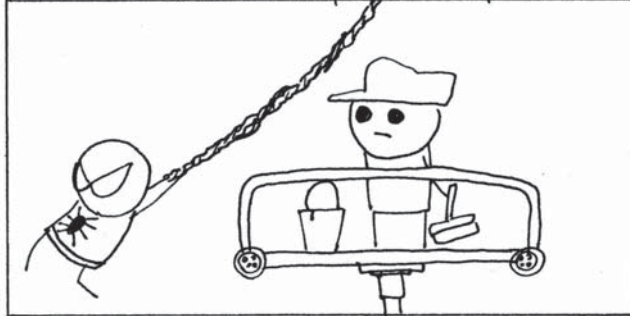
“Oh, You SO Smaht!” : One “Special” Kine Christmas Tree

By Steven Nishimoto



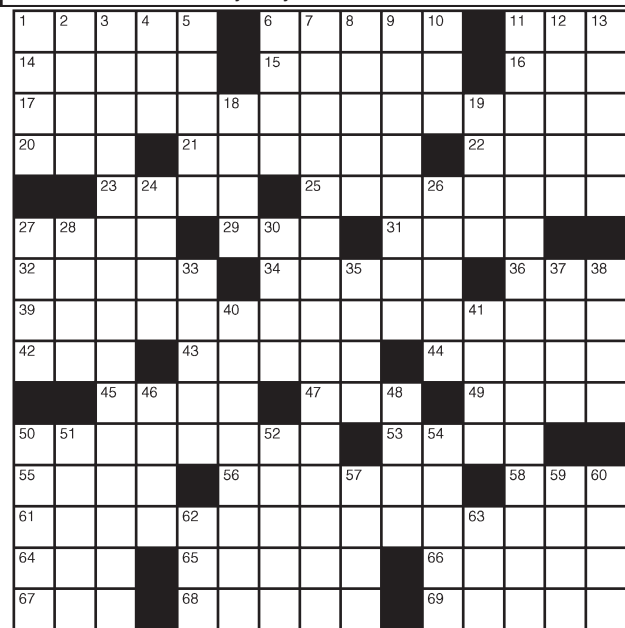
Note: The plant's more like a bush, yah? Never saw one... Like the strawberry tree and banana bush. :P

Spiderman to the Rescue by Toby Idian



THE Daily Crossword

Edited by Wayne Robert Williams



ACROSS

- 1 Lens
- 6 Commandment verb
- 11 Smidgen
- 14 Make cloth gathers
- 15 Bourgeois sculpture
- 16 Prez on a penny
- 17 Three lines
- 20 Wonderment
- 21 Like some cakes
- 22 Avian haven
- 23 ___-a-porter (ready-to-wear)
- 25 Shows intestinal fortitude
- 27 For two, in music
- 29 N.T. book
- 31 Sound of rippling water
- 32 Judging group
- 34 ___ on (mollycoddles)
- 36 Single entity
- 39 Three lines
- 42 Be quiet!
- 43 Skinflint
- 44 Loudmouth lummoX
- 45 Minnow cousin
- 47 Pen name
- 49 Military meal
- 50 Follow
- 53 Martin or Kingsley
- 55 Vietnam neighbor
- 56 Twinings rival
- 58 Hoodwinked
- 61 Three lines
- 64 E. Lansing campus
- 65 Sign up: var
- 66 At full speed, at sea

- 67 Distressed exclamations
- 68 Likewise
- 69 G. Gordon ___

DOWN

- 1 Workplace safety grp.
- 2 That was close!
- 3 Three lines
- 4 Not std.
- 5 Minotaur's isle
- 6 Hook's underling
- 7 Three lines
- 8 Ex-G.I.
- 9 Bared
- 10 Spike TV, once
- 11 Three lines
- 12 Discomfit
- 13 Penchants
- 18 Refer to
- 19 Snarl and growl
- 24 Offend the olfactories
- 26 Like damp basements
- 27 Real estate abbrs.
- 28 Speaker's platform
- 30 Some e-mail attachments
- 33 Madagascar primate
- 35 Actress Spelling
- 37 Ancient temple
- 38 Vanity cases?
- 40 Lhasa natives
- 41 Lapland native
- 46 Shell rival
- 48 Normandy town
- 50 San Antonio shrine
- 51 James novel, "___ Miller"
- 52 ___ firma
- 54 Sal of song

- 57 Leslie Caron musical
- 59 Part of DNA
- 60 Designer letters
- 62 Afternoon social
- 63 ID card letters, at times

read ka leo

su | do | ku

© Puzzles by Pappocom

Fill in the grid so that every row, every column, and every 3x3 box contains the digits 1 thru 9.

Puzzles will become progressively more difficult through the week.

Solutions, tips and computer program at www.sudoku.com

Go to www.kaleo.org for this puzzle's solution.

			6	4	8			
	6						7	
1		4				6		5
8	3		4	9		5	1	
			2	5				
6	4		7	3		9	8	
5		9				1		4
	7						3	
			8	9	6			

EASY # 86

By Verna Suit 12/3/08
 Silver Spring, MD
Stumped?
 Go to www.kaleo.org for puzzle solutions.

get more online

WWW.KALEO.ORG

videos • podcasts • slideshows • more!

Classifieds

The BOP Business Office

(to the right of the UH Bookstore lower entrance)
Monday-Friday 9a.m.-5p.m.

- Deadline:** 4 p.m. two days before publication.
- Payment:** Pre-payment required. Cash, in-state checks, money orders, Visa and MasterCard accepted.

- Rates:** \$5.00 per day (up to 3 lines); \$1.25 for each additional line. All caps and/or bold will add 25% to the cost of the ad. Place an ad in four (4) consecutive issues and receive the fourth ad free!
- In Person:** Stop by the BOP Business Office.
- Phone:** 956-7043

- E-Mail:** classifieds@kaleo.org
- Fax:** 956-9962. Include ad text, classification, run dates and charge card information.
- Mail:** Send ad text, classification, run dates and payment to Board of Publications, Attn: Classifieds
 P.O. Box 11674, Honolulu, HI 96828-0674

FOR RENT

Furn single rm. Cable in living rm, wireless internet, util incl, full kitchen, W/D coin op. 1 block west of Univ Ave. Avail 12/25. Ref. req. \$600/mo, parking \$35/mo. Lease. mrslee@hawaii.rr.com

Lrg furn. master rm w/bath. 1 blk to UH, quiet. \$800, dbl \$900, full kit, lrg lvng rm w/cable, wireless RR intrnt, utils incl excpt phone, w/d coin op. Parking \$35/mo. mrslee@hawaii.rr.com

St. Louis heights, cozy studio, prefer one person. Near UH, busline in front of house. No parking/smoking/pets. Own entrance, unit downstairs of house. Utils incl. \$850. 479-7041.

HELP WANTED

Bartenders Wanted!
 Up to \$300/day. No exp necessary. Training provided. Age 18+ ok. 800-965-6520 x172

Now hiring for the best job on campus! Work at the student phonathon and help us raise money for our 10 campuses. Looking for students who love UH and want to make a difference. \$10.80/hr to start. Apply online at studentcaller.com

HELP WANTED

RECEPTIONIST WANTED
 The Board of Publications is looking for a receptionist for the Business Office. Main duties include answering phones, typing, filing, cash handling, and other general office duties for Ka Leo and the BOP. If you are reliable, neat, and organized, and available Tuesdays and Thursdays 9:30am to 4:30pm in the spring semester, search for job #730-A2 on the student employment website or email amatots@hawaii.edu.

BUSINESS OPPORTUNITY

Job Opportunity: In home basic care for an elderly gentleman. This job is for evening care from 6pm to 9am five days a week. Pay includes room & board in Hawaii Kai, along with a \$1500.00 month salary. The living quarters is a detached room with a private bathroom and entrance separate from main house. The basic care includes some light house chores, cooking, bathroom assistance, and night watch. Training will be provided by a CNA. Please email Sean with a resume and references at seanduker@yahoo.com.

ADVERTISING POLICY

Ka Leo O Hawai'i does not knowingly accept advertisements that discriminate on the basis of race, color, religious preference, national origin or sex. **Ka Leo assumes no liability for ad content or response.** Please be cautious in answering ads, especially when you are asked to send cash or provide personal or financial information.

**REDUCE • REUSE
 RECYCLE!**

Hawaiian Watersports is hiring stand-up, surf, kayak windsurf & kite Sales Team(\$10-15/hr), Instructors(\$15-30/hr) for Kailua & Kapahulu stores. Send resume/refs: arlene@hawaiianwatersports.com
 Please no phone calls.

Cocktail help. Looking for reliable, friendly people to join our team. No experience necessary. Part-time. Excellent cash. Apply in person after 2pm. Cafe Anasia, 2227 S. Beretania St. No phone calls please.

check us out online: www.kaleo.org

Little Man is here

Find him today!

Hidden in every future issue of Ka Leo will be Little Man. Sometimes he will be hiding; sometimes he will be out in the open. Finding him will be its own reward. Please enjoy the hunt in addition to your regular comics and sudoku indulging.



Ka Leo O Hawai'i Daily.
It's like brushing your teeth

How's your Tan?

Sun Splash Tans
Indoor Tanning Salon

735-3777

First tan free with valid student ID

* sunsplashtans.com * 20 min walk from UH
625 Kapahulu Ave (near Jamba Juice), Honolulu

THESE PEOPLE HAD A GOOD BUSINESS\$ IDEA

They put it down on paper and it was worth \$100 <<

Joey Aquino
Vance Arakaki
Tamara Armstrong
Dylan Butterbaugh
Malia Cann
Garret Chang
Winona Chen
Alex Ching
Damian Davila Roja

Molly Fearn
Kenn Hartos
Jeremy Kowalczyk
Chun Ka Kwok
Weng Iek (Charles) Lei
Adrian Pieron
Jordan Robinson
Keith Sakuda
Ryan Lee Sharpe

Rachel Sokugawa
Norman Tansey
Lee Taylor
Shanah Trevenna
Lance Walker

ROUND 2 STARTS NOW

Submit your business idea **by Jan. 21** for a chance at **\$100**

ONE IDEA ONE PAGE ONE HOUR ONE HUNDRED DOLLARS

**•S•T•U•D•E•N•T•S•
•A•L•U•M•N•I•**

Now is your opportunity to serve on the University of Hawai'i at Mānoa's

BOARD OF PUBLICATIONS

- Student positions •
- Alumni position •

The UHM Board of Publications serves as the governing body for Mānoa's student publications, including *Ka Leo O Hawai'i*, the student newspaper, *Hawai'i Review*, a literary magazine, and *Ka Lamakua*, an arts and literature website.

Duties include (but are not limited to) monthly business meeting attendance, committee work, long-range planning, and budget approval.

Applications are available from the BOP Business Office (located to the right of the lower entrance to the UHM Bookstore).

For more information, contact Bob Duesterhaus at 956-7045.

Accepting applications on an ongoing basis.

APPLY FOR THESE KA LEO POSITIONS TODAY!

THE VOICE
KALEO
WWW.KALEO.ORG

Graphics Illustrators, Desk Writers, Layout Designers, Copy Editors

Stop by the Ka Leo newsroom, located at the bottom of the Campus Center stairs, and ask for an application. Deadline is this **Friday 12/05**

SPRING 2009 PARKING PERMIT INFORMATION

STUDENT PARKING PERMITS ARE RESERVED ONLINE.

The following types of permits will be available for reservation during the spring 2009 class registration period.

DEC 03 2008 - DEC 10 2008
supplies are limited.

CAR/TRUCK (\$134.00)

- Zone 20 - Lower Campus parking structure
- Zone 22 - Dole Street parking structure
- Zone 08 - Student Housing
- Zone 21 - Student Housing

MOPED/MOTORCYCLE (\$28.00)

- UCP - Upper Campus parking Lots
- CCP - Commuter Parking Lots
- DCP - Student Housing parkingLots

Students who wish to reserve a parking permit for the Spring 2009 semester must reserve a permit upon completion of their class registration for the Spring 2009 semester.

To reserve a permit, students must go to [HTTP://PARKING.HAWAII.EDU](http://parking.hawaii.edu)
The authorized link will be available from December 3, 2008 to December 10, 2008 (while supplies last)

Upon successful completion of a permit reservation a confirmation email will be sent to the student's @hawaii.edu email address. The confirmation email contains important information on the requirements to purchase the reserved parking permit.

For more information on other types of student permits available please visit our website at [WWW.HAWAII.EDU/PARKING](http://www.hawaii.edu/parking)