

**Inside**

News	1
Features	2,3
Editorials	4
Sports	5,7
Comics	6

*Wahine track team looks forward to strong performance*

**Sports | Page 5**



*Personal stories showcased in film festival*

**Features | Page 2**

# Rain falls throughout spring break

By Ka Leo News Desk

Gov. Linda Lingle has extended her statewide emergency proclamation to Sunday, April 9. The proclamation provides residents and businesses impacted by rains with assistance from the state disaster programs and services.

Last Sunday, as much as 8 inches of rain came down on parts of O'ahu.

Lingle's original proclamation was signed on March 2 to make residents aware of the risk in heavy rains that began Feb. 20. According to a press release, this is the fourth supplemental proclamation and includes all four counties, "for the purpose of authorizing the expenditure of State moneys, as appropriated, for the speedy and efficient relief of the damages, losses, and suffering resulting from the disaster."

The Ka Loko dam failure took place two weeks ago, damaging homes and roadways. The proclamation is aimed particularly at Kauai's Kūhiō Highway.

Several attempts have been made by Gen. Robert Lee to provide updates of the damage and flooding on Kauai.

"Twenty-three county, state and private non-profit agencies had representatives in the Kīlauea Community Center today," said Vice Director of Civil Defense

Edward Teixeira. "They were there to help people who have suffered due to the continued heavy rains and flooding and they will be back tomorrow in Kalāheo."

Kauai residents were not the only ones affected by the tropical storm going through Hawai'i last week. Mudslides covered the eastbound lanes of the Pali Highway and entrance to Kailua. Thunderstorms accompanied by heavy rain went on through the afternoon last Sunday. The amount of rain forced 12 Waimānalo residents out of the homes after their reservoir flooded.

"We're in the middle of a lot of severe weather overnight," said leading forecaster for the National Weather Service, Tim Craig. "It's improving for Kauai and O'ahu, but there are still flash-flood warnings for Windward O'ahu, Maui, the Big Island and Kauai. We're looking at severe weather for Maui County and the Big Island."

Last Friday afternoon, the rain had cleared up for barely an hour before returning to its quota of constant heavy rain.

Flooding waters cover the area behind UH Housing near Kānewai Park.

COURTESY PHOTO  
GRANT TIECHMAN



## NewsBriefs

**Important registration dates**

Don't forget students – registration for summer classes starts today, while registration for Fall 2006 semester begins April 26.

Goto <http://myuhportal.hawaii.edu> and log in for more information about when you can register for your class.

**Cultural music with a discount for students**

Mark Votapek, a cellist with the Honolulu Symphony, will perform as a special guest with the Brentano String Quartet at the Orvis Auditorium at the University of Hawai'i at Mānoa tonight at 7:30 p.m. There will also be an informal discussion before the concert at 6:30 p.m. in the music building, room 36.

Votapek became the principal cellist for the Honolulu Symphony in the 2004-2005 season. He has also played with the Saint Louis Symphony and attends the annual Olympic Music Festival in Washington state.

The performance by Votapek and the Quartet is the finale of the 51st season of the Honolulu Chamber Music Series. The performance will feature music by Wolfgang Mozart, Gyorgy Ligeti and Franz Schubert.

Tickets can be purchased at the UH ticket center or at the Orvis Auditorium box office an hour before show time. Tickets are \$30 for non-students or \$18

for students with a valid ID and members of the Honolulu Symphony.

**Poetry contest for students of Japanese language**

Budding poets who are also taking Japanese language courses can have their work recognized in the eighth annual Japanese Poetry Contest, sponsored by the Japanese section of the East Asian Languages and Literature Department. The contest is open to students from 100-level to 400-level in Japanese language. The entries will be judged in three separate categories based on course level.

Students may submit up to two entries each, and the sheet on which the entry is written must be sealed in an envelope. Each entry should include the student's name, course and section number, home address, e-mail, telephone number, and their Japanese teacher's name with an accompanying signature on the envelope. No identification should be on the entry itself.

Entries can be sent to the Japanese poetry contest box in the EALL department office, Moore Hall 382 by 3:30 p.m. on Wednesday, April 5.

For more information, visit <http://eastasia.hawaii.edu/jpn/poetrycontest>.

**Island air carriers vie for customers**

In the spirit of competition, local inter-island carriers Aloha Airlines and Hawaiian Airlines are joining Mesa

Air Group's go! campaign in offering a \$39 one-way airline ticket. The ticket price applies to one-way inter-island travel from Honolulu to either Kona, Hilo, Kahului and Lihue. The price is also limited to June 9 through September 30. Tickets must be purchased by this Friday, April 7.

**Rains wreak havoc for O'ahu**

After a downpour last Friday, Kahala Mall was forced to close due to interior flooding. Waikiki beaches have been closed because of high bacteria counts from sewage leaks. Signs are posted warning visitors after a sewage main break and overflows from manholes on roads. Landslides occurred around O'ahu from Kalihi to Windward O'ahu to areas of Honolulu such as Roundtop Drive and Makiki. Officials hope to re-open Kahala Mall today.

**CORRECTION**

Walt Niemczura, facilities manager for the nuclear magnetic resonator/mass spectrometer in the College of Natural Sciences, is also on the search committee for the University of Hawai'i at Mānoa Chancellor position.



COURTESY PHOTO • GRANT TIECHMAN

Last Friday, March 31, O'ahu received sudden downpours that flooded part of the island. The field behind Hale Noelani was not spared.

## EVENTS CALENDAR

Compiled by Alice Kim

### Free Events

Christine Christophersen, an aboriginal artist, will lecture tonight from 7:30 p.m. to 8:45 p.m. at the Art Building auditorium. For more information, e-mail Pat Hickman at [phickman@hawaii.edu](mailto:phickman@hawaii.edu), call 956-5260, or go on the Web to <http://www.hawaii.edu/art/intersections>.

Grad Fair 2006 will take place tomorrow from 10 a.m. to 3 p.m. at the Campus Center Ballroom. Spring 2006 graduates will have the opportunity to win prizes, take graduation pictures, order announcements and register to participate in the commencement ceremony. For more information, call Wendy Pearson at 956-6145, e-mail [graduate@hawaii.edu](mailto:graduate@hawaii.edu), or go on the Web to <http://www.manoa.hawaii.edu/commencement>.

"The Uygur Translation of 'Xiongnu' and Other Terms in Chinese Classical Literature," a China research seminar, will take place tomorrow from noon to 1:15 p.m. at Moore Hall, room 319. Yassin Ashuri will deliver this seminar. Ashuri is from the Institute of Ethnography at the Chinese Academy of Social Sciences. For more information, call Daniel Tschudi at 956-8891 or e-mail [dtschudi@hawaii.edu](mailto:dtschudi@hawaii.edu).

"Growth comparisons of various Hypnea species (red algae)," a botanical science seminar, will take place tomorrow from 12:30 p.m. to 1:30 p.m. at the St. John auditorium,

room 11. Dawn Adams will present this botanical science seminar. Adams is from the botanical science department. For more information, call Don Drake at 956-3937 or e-mail [dondrake@hawaii.edu](mailto:dondrake@hawaii.edu).

"Curious George: Taking the Monkey from Page to Screen," an animation lecture, will take place tomorrow from 6:30 p.m. to 8 p.m. at the Kapi'olani Community College campus, 'Ōhi'a 118. Yarrow Cheney, production designer for Universal and Imagine Entertainment's "Curious George," will discuss the process of adapting the illustrative design style of the children's books to the big screen. For more information, call Sharon Sussman at 734-9382 or e-mail [ssussman@hawaii.edu](mailto:ssussman@hawaii.edu).

English professor Ian MacMillan will read from his novels "The Seven Orchids" and "The Braid" tomorrow night from 7:30 p.m. to 8:45 p.m. at the Hawai'i Institute of Geophysics auditorium. There will be a reception at 7 p.m. For more information, call the English department at 956-7619.

The chamber music class will hold a concert on Thursday from 7:30 p.m. to 9:30 p.m. at the Orvis Auditorium, located at the music department. I-Bei Lin is the director of the class. For more information, call the music department at 956-8742, e-mail [uhmusic@hawaii.edu](mailto:uhmusic@hawaii.edu), or view the music department's schedule of events at <http://www.hawaii.edu/uhmusic/schedule.htm>.

# Film festival showcases international selections

By Sabrina Favors

Ka Leo Staff writer

Every fall, the Hawai'i International Film Festival rolls around with 200 films from all over the world. The ninth edition of the festival's spring showcase offers moviegoers the chance to see a smaller sample of international films at another time of the year.

This year's HIFF spring showcase opened on March 31 and will conclude on April 6, presenting 26 films throughout the week. The films will be shown at the Dole Cannery Stadium 18.

According to Christian Razukas, a veteran of film festivals and a film programmer with HIFF, the spring showcase allows them to present films that were "too new or too popular to show in October." Some films become so popular after being shown in other festivals in Pusan, Toronto or Edinburgh, that they're unavailable during the fall festival. By March, the distributors are ready to release the film, explained Razukas in an e-mail interview, so HIFF can show a sneak peek. The spring showcase also allows them to show films that have just been shown at the Sundance Film Festival in January, before their release in the United States.

In order to get content for the showcase, Anderson Le, the director of programming, and other HIFF organizers "attend other festivals and film markets, track major films that generate buzz in the trades, publications, Web sites and blogs."

After receiving over 1,500 films through a call-for-entries, a screening committee narrows down the selection. "Then, we lay out the festival and put the puzzle pieces together," Le said in an e-mail. "But, we do our best to come up with a cohesive film program that is also a broad cross-section of different genres and ideas."

Le explained that many factors go into choosing films for the festival, including appeal to the HIFF audience, whether it's a "minority voice that should be championed," running time and theme. Although a 30-minute short may be great, he said, the programmers can't always find a place for it during the showcase — too long for a shorts program, and too short for a feature film.

"The trend in our showcase is towards smaller, low-budget and more intimate productions," Razukas said. "But smaller and low-budget means more creative chances can be taken."

Themes are found as all the films are being chosen and scheduled, though sometimes they have a theme in mind in advance.

"For the spring showcase, the shared motif is definitely small, personal stories with central characters who are below the radar trying to carve out a life," Le said. Films such as "Little Fish," "Tsotsi," and "Love is a Crazy Thing" encompass this theme.



Among the 26 international films in this spring's Hawai'i International Film Festival are "Minsan Pa," (top photo) a drama that spotlights Filipino political and social issues, and "Linda, Linda, Linda," (bottom photo) a Japanese film about a rock band of high school girls.

COURTESY PHOTO  
HIFF



## Screenings this week

"The Gift," April 4, 3 p.m.

"Zozo," April 4, 3:15 p.m.

"Citizen Dog," April 4, 6:30 p.m.

"Letter from an Unknown Woman," April 4, 8:45 p.m. and April 6, 3 p.m.

"20 Centimeters," April 4, 9 p.m. and April 5, 3:15 p.m.

"Moonlight in Tokyo," April 4, 6:15 p.m.

and April 6, 3:15 p.m.

"Shopaholics," April 5, 6:15 p.m.

"Spring Snow," April 5, 6:30 p.m.

"Proposition," April 5, 8:45 p.m.

"District 13," April 5, 9 p.m.

"Love Is a Crazy Thing," April 6, 6:15 p.m.

"Parineeta," April 6, 6:30 p.m.

"Friends with Money," April 6, 8:45 p.m.

"Rules of Dating," April 6, 9 p.m.

a slow rollout this spring by providing schedule times for the iPods, and plan to offer more services for the fall festival.

"Firstly, it's a way to market our films in a new avenue," Le said, "but also to provide as much service to our audience members by making information more accessible."

For more information about the films being shown, visit <http://www.hiff.org>, and look for the film listings.

Le pointed to "Linda Linda Linda," a film from Japan, as one of his favorites in the spring showcase. It's about a group of high school girls in Japan trying to form a rock band. It features a musical score by James Iha from the Smashing Pumpkins. He also mentions "District 13," a French film written by Luc Besson ("The Fifth Element"), which he describes as being like "Ong Bak" meets "Escape from New York."

Razukas said his interest was more centered on independent films from the Philippines, which he would like to see more of at HIFF. One such film is "Minsan Pa," which breaks some conventions of Filipino cinema, including both the Cebuano and Tagalog languages, mixing melodrama with political and socioeconomic issues, and using cinematography that treats the location as a character.

"Proposition," a film from Australia, is another film Razukas recommends. It's an outback western, set in 1880s Australia starring Guy Pearce and David Wenham.

Although HIFF shows a wide range of films from the East and West, Le said they're making a concerted effort to present more films from Latin America, especially for the fall festival. Personally, Le would like to showcase more African films.

Le would like attendees to see all of the films being presented this week, but encourages people to see the European selections, such as "Zozo" from Sweden, which Le said is "amazing."

This year, HIFF organizers have also made trailers of the films available via iPod. He added that they are doing

Positions available for Summer and Fall 06

## KA LEO O HAWAI'I

Ka Leo O Hawai'i is seeking to fill the following paid positions for the upcoming summer and fall semesters:

**Associate Editor in Chief**  
**Managing Editor**  
**Chief Copy Editor**  
**News Editor**  
**Sports Editor**  
**Features Editor**  
**Editorials Editor**  
**Visual Editor**  
**Photo Editor**  
**Comics Editor**

**Associate Copy Editor**  
**Associate Editorials Editor**  
**Associate News Editor**  
**Associate Sports Editor**  
**Associate Features Editor**

For more information or an application please come to the Ka Leo building across from the ground level bookstore entrance or call 956-7043. Please submit resume with application.

**Deadline: April 17th, by 4pm**





Jeon Sung-hwan (center) stars as an old fisherman set to marry the young girl he raised (Han Yeo-reum, left) in the Korean film "The Bow," which opened the spring Hawaii International Film Festival this weekend.

COURTESY PHOTO  
HIFF

## Korean drama opens Hawai'i Film Festival

By Laura Jenkins

*Ka Leo Contributing Writer*

Through his construction of the film, "The Bow," director Kim Ki-duk presents an artistic and well-crafted portrayal of basic human conflicts within the context of Korean culture. Sexuality, jealousy, father-daughter relationships, marriage and the juxtaposition of traditional Korea and the modern world are all intensely explored, yet subtly portrayed.

"The Bow" was shown this weekend at Dole Cannery Theaters as part of the spring Hawai'i International Film Festival. The festival began on April 1 and will continue until Friday, with showings of 28 independent international films.

"The Bow" chronicles the relationship between an old fisherman and a 16-year-old girl. The 60-year-old fisherman has kept the girl secluded on his

fishing boat since she was six years old, and plans to marry her when she turns 17. There is a lingering tension in the film surrounding the fisherman's fatherly role versus the role of a husband, which he plans to assume. This tension builds as the young girl transforms from blank, naive and virginal, to a rebellious and omniscient young woman, with the fisherman despondently observing her growth. The roles of the old fisherman, the young girl and the intruding young men who fish on the boat represent the tension between the modern world and the preservation of tradition.

Director Kim Ki-duk uses hardly any dialogue between the two main characters, Jeon Sung-hwan (the old man) and Han Yeo-reum (the young girl), creating an increasingly uncomfortable tension surrounding their thoughts and relationship.

The use of windows in the film as a vantage

point for characters reflects a separation from reality and perspectives not expressed through dialogue. The subtlety in "The Bow" feeds the intensity and message of the film.

The "bow" is the fisherman's weapon used to protect the young girl from men fishing on the boat, as well as to tell these men's fortunes. The young girl also uses the bow for her own protection and as a form of expression throughout her transformation. It manifests the wills of both the old man and the young girl and becomes their means of communication.

"The Bow" ends with an odd closing scene, and although initially off-putting, is fundamental in the film, as well as evidence of Han Yeo-reum's talent as an actress.

For more information on "The Bow" and other Hawaii International Film Festival showings, visit the festival's Web site at <http://www.hiff.org>.

Positions available for  
Summer and Fall 06

## Ka Leo O Hawai'i

Ka Leo O Hawai'i is seeking to fill the following paid positions for the upcoming summer and fall semesters:

Associate Editor in Chief

Managing Editor

Chief Copy Editor

Associate Copy Editor

News Editor

Associate News Editor

Sports Editor

Associate Sports Editor

Features Editor

Associate Features Editor

Editorials Editor

Associate Editorials Editor

Visual Editor

Photo Editor

Comics Editor

For more information or an application please come to the Ka Leo building across from the ground level bookstore entrance or call 956-7043. Please submit resume with application.

Deadline: April 17th, by 4 p.m.

# No stars, no stripes

## Staff Editorial

Daily Targum  
(Rutgers)

(U-WIRE) NEW BRUNSWICK, N.J. – At Skyline High School in Longmont, Colo., the American flag, as well as any other flag, will not be displayed due to a ban from the principal. The ban was placed after an incident at an immigration protest. One group was holding a Mexican flag favoring illegal immigration rights. The opposing student group held an American flag and allegedly threw the flag in another student's face. According to ABC News, Principal Tom Stumpf claimed the flags were "being used as symbols of bigotry, a symbol of hostility."

Stumpf misdirected his punishment when banning the use of flags in student protests. A symbol doesn't embody a protest. The flags were not the perpetrators of a violent act or members of a political

group. Instead of punishing the student who threw the flag, the school took away the innocuous symbol.

The flag was not the reason for the protest. Instead of pointlessly blaming the situation on a piece of fabric, the school should have addressed how the right to protest does not mean anything can be done in protest. Even without the flags, students can still try to harass other students. Skyline High School failed to stop the harassment mentality by making it seem the flag should be better protected than the student's rights.

Granted, the racial tensions associated with the immigration debate may cause administrators to fear escalating violence when flags are posted, but they should address the actions of the protesters. It is the students who decide how to conduct their protest. If the protest involves violence, the school should punish harassers.

## Oh Yeah ... Oh No stories

In Fall 2005, I visited Campus Center every morning to pick up a bagel. However, this morning was very different. I placed the bagel pieces into the toaster and pushed the lever down. After two minutes I noticed the bagel was turning black. I tried to take the bagel out of the toaster by pulling the lever up. Unfortunately, the lever broke. At this moment, I started to freak out. This was the second toaster that I broke in my life and I was not about to let this one burn up in flames. I unplugged the toaster from the outlet and asked the cashier for assistance. She helped me get the bagel out of the toaster before any other damage was caused. The following week, a NEW DUMMY-PROOF toaster was installed.

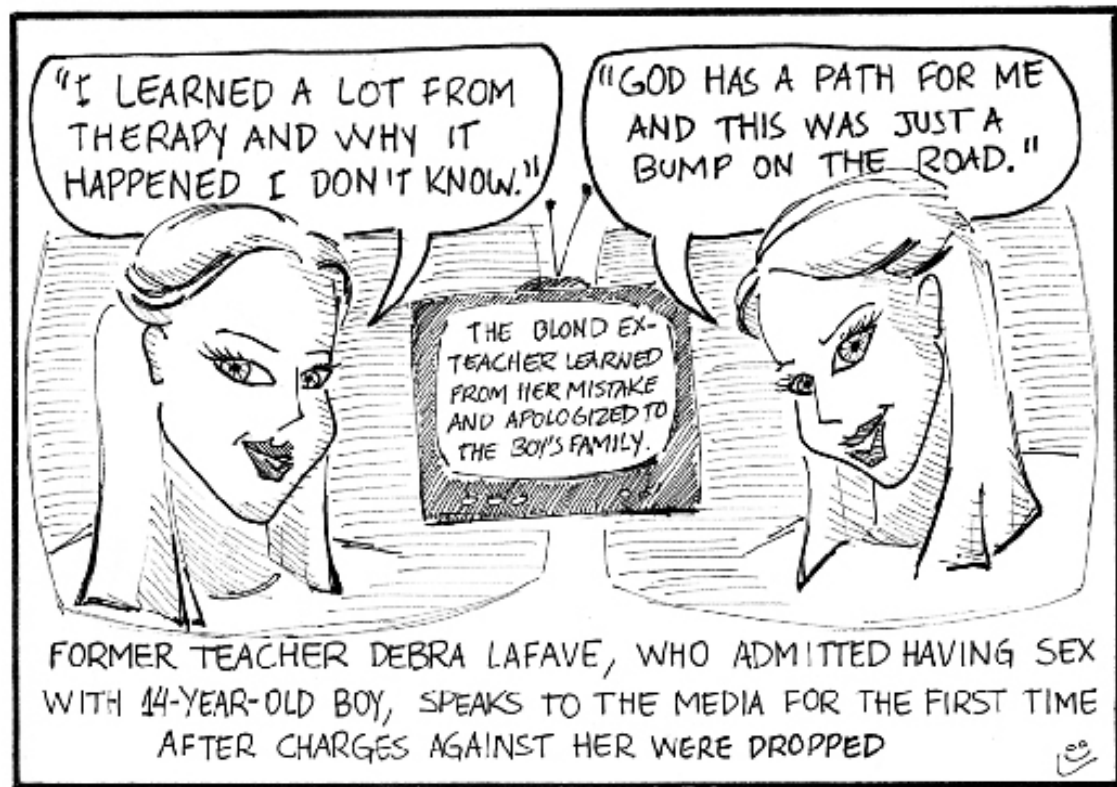
**Shawn Asuncion**

Ka Leo would like to thank all the students who participated in the contest for the Oh Yeah ... Oh No Stories. To further contribute to Ka Leo, please submit your letters to the editor, Bathroom Wall quotes or become a writer for your paper. We are eager to read your submissions.

Bathroom Wall  
[thewall@kaleo.org](mailto:thewall@kaleo.org)

Letters to Editor  
[editorials@kaleo.org](mailto:editorials@kaleo.org)

## Editorial Cartoon



Cartoon by Léo Azambuja

## Ka Leo Editorials Needs You

Do you like staying up to date on current events?

Are you constantly expressing your opinions on different subjects?

Is writing something you enjoy doing?

Write for the editorials section and get paid for something you already like to do.

We need writers who are informed, enthusiastic, and don't mind a little fame.

Email [editorials@kaleo.org](mailto:editorials@kaleo.org) for your chance to get your ideas out there

## Letters to the Editor

### Policies need revision at Hamilton Library

Saturday afternoon, I walked into Hamilton Library to find books for a research paper. I used the computers and eventually resorted to asking a friendly librarian at the information desk for help. I went upstairs to the second floor and found several useful books on my topic.

I found myself enveloped in a book when I was politely alerted by a friendly fellow student that the library would be closing in twenty minutes. I, so-to-speak, flew downstairs, collected my things and briskly walked over to the circulation desk where a large blue sign informed me that once the clock strikes 4:45 p.m. books can no longer be checked out of Hamilton.

The unfriendly employee behind the circulation desk verbalized the policy while putting some items away. She had correctly anticipated that I was going to inquire as to whether or not the information on the blue sign was going to be strictly enforced considering it was 4:47 p.m., only 2 minutes past the deadline. There I stood with a pile of books and no resources.

I asked a departing student worker if there was a supervisor I could speak with who could properly explain the policy to me and out came another student worker with absolutely no more information than the other had provided me with. I understand fully that student workers have no power to

write or bend UH policies. I was then instructed to place the books that I could not check out between 4:45 and 5 p.m., normal library hours, on a table with my name on old index cards secured with rubber bands. I did so and as I walked away from them and out of Hamilton I pondered – shouldn't this library just close at 4:45 p.m.? Or maybe the helpful blue sign could be relocated from beside the closed circulation desk, to the vacant entrance way where one could make an informed decision to check their books out at least 16 minutes prior to closing?

**Gabriela Overdorff**  
*Undergraduate Student*

### EDITORIAL

Editor in Chief Jay Chrisman

Associate Editor in Chief Kimberly Shigeoka  
Managing Editor Marlo Ting  
News Editor Blaine Tolentino  
Associate News Editor Robert Shikina  
Features Editor Darlene Dela Cruz  
Associate Features Editor Alyssa Navares  
Comics/Co-Visual Editor Joe Guinto  
Visual Editor Tanyah Tavorn

Editorials Editor Matt Tuohy  
Associate Editor Michelle White  
Sports Editor Keane Santos  
Associate Sports Editor Danielle Flud  
Photo Editor Chris Yeung  
Chief Copy Editor Grant Chartrand  
Associate Chief Copy Editor Jennifer Larson

### ADVERTISING

Advertising Manager Ali Kagawa

## Ka Leo O Hawai'i

the voice of hawai'i

The Ka Leo Building  
University of Hawai'i at Mānoa  
1755 Pope Road 31-D  
Honolulu, HI 96822

Newsroom: (808) 956-7043  
Advertising: (808) 956-7043  
Facsimile: (808) 956-9962  
E-mail: [kaleo@kaleo.org](mailto:kaleo@kaleo.org)  
Web site: [www.kaleo.org](http://www.kaleo.org)

Ka Leo O Hawai'i is the campus newspaper of the University of Hawai'i at Mānoa. It is published by the Board of Publications four times a week except on holidays and during exam periods. Circulation is 14,000. Ka Leo is also published once a week during summer sessions with a circulation of 14,000. Ka Leo is funded by student fees and advertising. Its editorial content reflects only the views of its editors, writers, columnists and contributors, who are solely responsible for its content. No material that appears in Ka Leo may be reprinted or republished in any medium without permission. The first newsstand copy is free; for additional copies, please come to the Ka Leo Building. Subscription rates are \$36 for one semester and \$54 for one year.

© 2006 Ka Leo O Hawai'i

# UH Women's Track and Field sets the pace

By Magdiel Vilchez  
Ka Leo Staff Writer

The University of Hawai'i Rainbow Wahine Track and Field team is sprinting towards a phenomenal outdoor season after setting a number of exceptional times and personal best performances at the seventh of nine Sunset Meets at Cooke Field on March 25.

After finishing the indoor season with a school record finish of seventh place with 52 total team points (previous record was ninth with 38 points set by last season's team), the Rainbow Wahine are looking to mirror that success in the outdoor season.

"We had a really good indoor season where we scored twice as many medals as last year and 50 percent more points and moved up from ninth place all the way up to seventh," said UH Track and Field Head

Coach Carmyn James. "That was our best ever indoor season and now we're coming off that and having a really strong outdoor season. So far, we've only had one trip to the mainland in Northridge, but the team did really well even despite the cold conditions."

At the Northridge Relays, the Rainbow Wahine teams boasted three

first-place finishes in the 4x800-meter relays, 1,600-meter sprint, and 4x100-meter shuttle hurdle.

"We've stepped it up a lot, the whole team has and we're starting to put big numbers up and people are starting to realize that Hawai'i is competition and we're not just showing up," said UH sophomore thrower Meghan Weaver. "I started off my season where I ended it last season so I am really excited to see where it goes."

Originally from Ontario, Weaver previously qualified for the NCAA West regionals in the shot put where she finished in 8th place with a personal best throw of 15.02 meters.

Weaver garnered silver-medal honors at the Western Athletic Conference championships with a throw of 14.61 meters.

This season Weaver has been plagued by a series of injuries as she is working to get back to full speed.

"I started off with some injuries so practice was hard for me," Weaver said. "But I'm starting to get back into it and putting up some big numbers so hopefully in the mainland I can qualify for regionals."

As for track, the Rainbow Wahine have more than their fair share of top

runners, including record-breaking heptathlete Annett Wichmann, sprinter Thalia Amanakis, and distance runner Chantelle Laan.

"We're really strong in the field events and we're building up our track events," James said. "In the 400-meter hurdles, Thalia is our best bet to make standard in that event and Candace Rosenthal is right on her heel."

"It's my first season here in Hawai'i, but I feel quite confident because I'm getting good base times in the beginning of the season since we just had our first outdoor meet last week so I got to improve on them," said the Australia native Amanakis.

With unpredictably heavy rain disrupting practice and having no NCAA school competition within the island, the Rainbow Wahine often have difficulty simulating mainland competition.

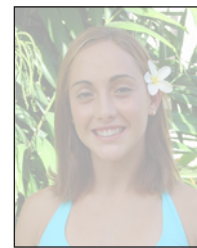
"[Sunset Meet] is more of an inner-squad meet," said Laan. "We're lucky to have some guys from the community to come out and compete with us. It's easier for myself to make it more competitive when I'm running against girls. I take it more personally when I'm beat by a girl!"

The Sunset Meet allows anyone to participate in a number of running events against members of the Rainbow Wahine track and field team for a small monetary fee of two dollars per event, providing both members of the community and track team with a variety of competition.

"This is like one of the best deals on the island if you want to



Thalia Amanakis



Chantelle Laan



Meghan Weaver

do a race," said meet participant Rolf Kvalvik. "There are old people and young people here and it's just a great experience."

The Rainbow Wahine will next bring their show on the road with hopes of returning home to compete in the WAC championships, which UH hosts in May.

"We don't have a lot of spec-

tators out here," said Weaver. "In the mainland, it's the top competition come from every school like Stanford, UCLA, USC ... for field events it's one of the biggest crowds I've ever seen."

"[The] WAC will be very interesting," added Amanakis. "People will come from all around America and fill the seats to see us, so it will be very interesting."

**"We've stepped it up a lot ... we're starting to put big numbers up."**

## WRITERS WANTED

Ka Leo O Hawai'i can only be as good as the students make it. Fill out and submit an application at the Ka Leo building across from the ground floor entrance of the bookstore or download it from <http://www.kaleo.org>.

# COMICS & CROSSWORD

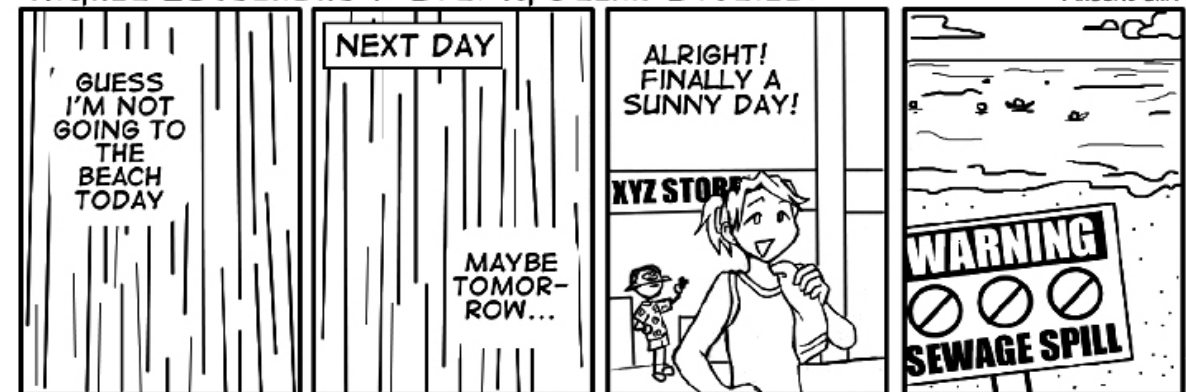
**POOR BOY** - COMING TO A MIDDLE GROUND



**EXY**



**HIGHER EDUCASHUN: SPRING BREAK STORIES!**

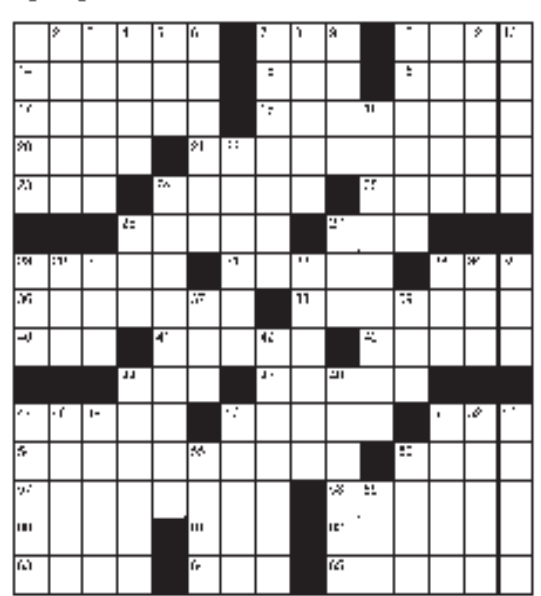


The Ad of the Inebriated Bunny... (Fuzz) ©



## Crossword

- ACROSS
- Barberhop
  - leathe
  - Madison Ave. walk
  - Light carriage
  - massatic
  - made's
  - Shop
  - Crutch
  - Brant on
  - Heart
  - Handicrafts
  - Swamp
  - Reduce the intensity of
  - Double doors
  - Yankee apple
  - Islands of color
  - Peak altitude
  - Hill to sea
  - Caravan
  - stopover
  - Parrot
  - Kind of Peppy
  - Crump
  - Excluding
  - Sachet
  - Personal gloves
  - Lane
  - Understand
  - Kingdon
  - Rock fiber
  - Clawing
  - humorous
  - Utter
  - Eccelesty verbs
  - Buckeye State
  - Gender class
  - Yearly records
  - Same time
  - hence
  - Surpass
  - Bull site
  - Adriatic
  - Avignon
  - Blackhead
  - Nubby woods
- DOWN
- A or or Martin
  - Endavors
  - Snip up
  - Hrsted
  - Type or start
  - Openness
  - Pauly
  - hook or gown
  - Out to
  - disorderly
  - Asper zigzag
  - What to do is
  - ing, narrow ledge
  - Affirmative
  - As might be expected
  - Burton of
  - Caravan for one
  - Adult male
  - One of those girls
  - Sept. follow
  - word
  - Sermon subject
  - Old Mastic
  - honey
  - Toupee
  - Turkish towel?
  - frustrate
  - concept
  - Yow! Isleik
  - Astor Waterston
  - Am. middle



© 2006 Joe Guinto. All rights reserved.

**Solutions 03/23**

RADS	ALIDA	URGE
ICON	LOWER	TEAL
THE ONLY	ONE ENDS	
AEROBE	NAN NOSE	
	PAYS	LAYS
SAME	WHOIS	WISER
PLED	AIR	CLETE
OLD	WYNONNA	AHI
RAISE	NEE	STEN
THAN	ANYONE	POLS
	ALAE	EDER
PREP	TSP	LEADEN
LAPP	ISE	EVERYONE
OGEE	VINES	ELOI
DEER	ERNES	DELL

- 44 Shiny fabrics
- 46 Family
- 47 Caccagnolo
- 48 Castle of Dunne
- 49 Where Pezo Pays
- 50 Bus
- 51 Tremble
- 52 Felt overly
- 53 Emily and Wiley
- 54 Intelle. ne. More to
- 55 Fairtale operer
- 59 A. ill's time

Receive special and daily updates in your inbox. Sign-up at [www.kaleo.org](http://www.kaleo.org)

## KA LEO O HAWAII CLASSIFIEDS

**The Ka Leo Building**  
(across from the UH Bookstore lower entrance)  
**Monday-Friday 8a.m.-4:30 p.m.**

**Rates:** \$1.25 per line (minimum 3 lines). All caps and/or bold will add 25% to the cost of the ad. Place an ad in four (4) consecutive issues and receive the fourth ad free!

**Deadline:** 3 p.m. the day before publication.

**Payment:** Pre-payment required. Cash, in-state checks, money orders, Visa and MasterCard accepted.

**In Person:** Stop by the Ka Leo Building.

**Phone:** 956-7043 E-Mail: [classifieds@kaleo.org](mailto:classifieds@kaleo.org)

**Fax:** 956-9962. Include ad text, classification, run dates and charge card information.

**Mail:** Send ad text, classification, run dates and payment to: Board of Publications, Attn: Classifieds P.O. Box 11674, Honolulu, HI 96828-0674

# Warriors blitz through Northern California

## UH continues winning streak while away

By Scott Alonso  
Ka Leo Staff Writer

STANFORD, Calif. – The University of Hawai'i men's volleyball team should travel to California more often. Traveling through the rain soaked cities in Northern California, the Warriors won four matches against the Stanford University Cardinal and the University of Pacific Tigers last week. UH is now 10-2 in California and has now won 15 straight matches dating back to February.

### UHM against Stanford

"Almost anybody in our league can beat anybody on a given night, there are no easy matches in our conference" said UH head coach Mike Wilton.

He warned UH about not underestimating any opponent in league play. Stanford entered the two match series losing their last nine matches. The Cardinal have a dismal 4-20 record overall and 2-16 in league after the series with UH.

Playing on the road is a tough affair for any UH team. Time differences, traveling by plane or bus and altitude differences can affect a team's performance. Though Wilton revealed that he enjoyed playing on the road.

"One of the good things about the road there is way less distractions. At home there is a lot of media attention. It can be very distracting. On the road there is a constant reminder of being in a different city that we are here to play volleyball," said Wilton.

In the four-game road trip, different Warriors each night stood out for UH against the Cardinal and Tigers.

Last Wednesday and Thursday against Stanford, UH swept each match in three games. In the second match, junior outside hitter Lauri Hakala led the way for UH. He tallied 11 kills on 18 swings and senior outside Matt Carere added nine kills on 10 swings for a .900 hitting percentage.

Starting the match strong was key for the Warriors. Hakala slammed down a kill to put UH up 9-3 in the first game. UH finished off the Cardinal in that game in only 20 minutes, 30-16.

"It is really important to win that first one, we can not be sloppy on the road because we travel a lot and we can get tired," said senior outside hitter Jose Delgado.

The Cardinal team played well in the second game but committed seven errors to help UH win 30-24. Miscues plagued the Cardinal

throughout the whole series and doomed their chances of a comeback in the third game.

Stanford got to within two points of UH, 21-23 after a block by Ben Reddy and Jesse Meredith. However, three errors, a service and two attacks in the nets by Stanford gave UH the game and the match, 30-22.

Reddy was the lone bright spot for the Cardinal. He threw down 14 kills in Thursday's match and 10 in Wednesday's but committed 13 attack errors. The Cardinal in Thursday's match had 19 attack errors and hit .175 as a team.

Unfortunately for the Cardinal, last Wednesday's miscues also helped UH continue their win streak. In the first game of the two match series, senior middle blocker Maulia La Barre's serve error, gave the Cardinal hope with the score at 15-12 in favor of UH. Senior outside hitter Jose Delgado answered for UH; his kill gave UH a four-point advantage at 16-12. From there, UH went on a 7-3 run to take Game 1 30-20.

Delgado was on fire most of the match, throwing down six kills in that first game, four in the second and two in the third. His 12 kills were the most in the game and his .444 hitting percentage was the best in the match for anyone who played at least two games. He leads the team averaging 4.4 kills per game.

In Wednesday's match, the Cardinal had nine errors in each game and 12 serve errors. A Cardinal serve sailed into the net to give UH Game 2 30-19.

Wilton went to his bench in the second and third games. All 12 players for the Warriors saw playing time in each match against Stanford. UH senior outside hitter Matt Bender chipped in four kills off the bench in Game 3. The Warriors took the game 30-21 and the match.

Besides sweeping through Northern California, Wilton earned his 600th career victory. Wilton coached men's and women's volleyball at California Polytechnic State University before heading over to Honolulu 13 years ago to coach the men's team.

This win streak by the Warriors ties the longest in team history with the 1996 squad. Coming back to Honolulu with only four regular season matches left against University of California-San Diego and Brigham Young University, UH is sitting comfortably in the Mountain Pacific Sports Federation standings. The Warriors are in second place (19-4, 15-3) in the MPSF, only one game behind University of California-Irvine.

### UH Finishes off Tigers

UH swept the Tigers for the second straight time, winning 30-21, 30-21, 30-19 at the Spanos Center clinching a berth into the upcoming Mountain Pacific Sports Federation playoffs.

UOP fell to 7-15 and 5-11 with their second straight loss to UH.

Three Warriors had double-digit games on the night – Jose Delgado (11), Lauri Hakala (16) and Matt Carere (10). UOP's Brian Adamson led the Tigers with 25 kills.

The Warriors won decisively

taking Game 1, after falling behind 7-6 early.

UOP's Adamson recorded 10 of his match-high 25 kills in the first set. He also posted 10 in Game 2 but Pacific could not recover, falling 30-21. The Warriors kept the heat on in Game 3, prevailing 30-19.

### Reft sets record in route of UOP

UH beat out UOP in three games on March 25. Highlighting the sweep was libero Alfred Reft recording four digs and becoming the UH all-time leader in the statistical category. Reft needed only three digs to surpass former Warrior Allen Allen (1986-89) who had 739. Reft is now at 740 and counting.

Jose Delgado and Dio Dante led the offensive charges slamming down 10 kills apiece as UH hit a whopping .369 collectively.

UH limited the Tigers to only .160 hitting, led by Brian Adamson's 15 kills.

Pacific led early in Game 1 8-5 and 11-8, but UH rallied tying it up at 16 and took the lead for good on the very next point on a UOP hitting error. UH went up by as many as four (25-21) before closing out the game, 30-27.

Games 2 and 3 were all UH. Hawai'i jumped out to leads of 5-0 and 10-3 before cruising on to a 30-19 victory in Game 2. It was much the same in Game 2 as the Warriors scored the first four points and extended its lead to seven (16-9) which they maintained the rest of the way.

## >>> Ka Leo Q & A

*" Do you have to be a journalism major to work at Ka Leo? "*

No. Ka Leo accepts students from all majors, undergraduate or graduate. Whether you're a business major, botany major or music major, Ka Leo can provide unique opportunities that will give you a leg up in your field.

*" But I don't know how to write. "*

The editorial staff is available to help you learn style and standards. As long as you're open to criticism, willing to learn and want to improve, we can help.

*" What's in it for me? "*

Not only do writers get paid, working for Ka Leo is a good way to inform others about interesting people and events, develop your time management skills and improve your writing. It also gives you a chance to meet interesting people and keep up on what's happening on campus.

Ka Leo O Hawai'i can only be as good as the students make it. Fill out and submit an application at the Ka Leo building across from the ground floor entrance of the bookstore or download it from <http://www.kaleo.org>. E-mail [kaleo@kaleo.org](mailto:kaleo@kaleo.org) for more information.

<<<



Lauri Hakala



Jose Delgado