

BE A PIRATE!  
Tryout for "Treasure Island"  
Tonight at 7 p. m. Lecture  
Hall

# Ka Leo o Hawaii

THE VOICE OF HAWAII

1930 DEAN GRID SCHEDULE  
Oct. 8—Hawaii vs. H. A. C. (night).  
Oct. 22—Hawaii vs. St. Louis Alum-  
ni (night).  
Oct. 29—Hawaii vs. Town Team  
(night).

VOL. IX. HONOLULU, HAWAII, WEDNESDAY, OCTOBER 1, 1930. NO. 3

## Class Debate Tryouts To Be Held Next Week

Plan to Select Team to Meet  
Stanford University  
in January

TRIALS SET FOR OCT. 10

The Chain Store in the Com-  
munity Is Topic  
Chosen

The inter-class debates usually held during the second semester will be initiated in a few weeks, with the hope of getting debaters to meet the Stanford University debaters early in January.

The tryouts for the various class teams will be held on Friday, October 10. The question for debate will be, "Resolved, That the Chain Store is a Detriment to the Prosperity of the Community." At the tryouts any person trying for the teams will speak four minutes on either side of the question.

### Debate Schedule

The first debate between the two lower classes will be held on Wednesday, November 5 and on November 7 the juniors and seniors will debate. The championship debate between the two winning classes will be held on Friday, November 14.

Any student of the University who has not previously been on any varsity debate team shall be eligible to enter these debates.

It will be remembered that last year the present junior class team composed of Kenneth Young, Kenji Fujiwara and Kazuma Kaneo won the silver plaque which is put up for competition by the Hawaii Union annually.

## Memorial Hospital To Be Erected For Robert Shingle Jr.

Hoolehua, Molokai will be the site of the Robert W. Shingle, Jr. Memorial hospital which Senator and Mrs. Robert Shingle are building in memory of their son who was recently killed in an automobile accident.

The hospital will be on a site overlooking the greater part of Molokai and will be near or in the present settlement of the Hawaiian Homes commission. An Episcopalian church center will also be built there.

Hoolehua is the center of the Molokai population, but the settlement has no hospital facilities closer than 25 miles. Plans had been made to move the Molokai hospital to the town, but the Shingle hospital will make it unnecessary.

Senator and Mrs. Shingle were on Molokai last week, making plans for the hospital. Discussion of the matter has also been held with Governor Lawrence M. Judd and Dr. F. E. Trotter of the board of health.

Robert "Buzz" Shingle was of the class of '32 and had been a polo and tennis player. He had also been elected treasurer of his class. The accident occurred September 14.

## EDUCATION THE HOPE OF FUTURE WORLD COOPERATION

By NAPOLEON TUITELEAPAGA

The University of Hawaii and its various organizations welcome you as the future saviors and educators of mankind in the Pacific. Only education can now salvage the world. Only educators can lead us in the Pacific to the new things that are before us. Nearly two-thirds of the inhabitants of this planet live adjacent to Pacific waters. In the Pacific the oldest and the newest civilizations meet. Here must be worked out the new world problems of inter-racial cooperation. Unless the children now born and those being born are guided aright by you educators in Pacific lands, both the old and the new civilizations are in danger of disappearing in chaos. We look to you for salvation.

The University of Hawaii and its various organizations and clubs have conceived and are carrying out the idea of establishing points of contact between the men who are doers and thinkers in all Pacific lands. They are doing this in the belief that men who really know each other will trust each other, and will work together for the salvation of all and the multitudes will follow their lead and guidance. We seek to bring to you students who will be future educators or saviors from all Pacific lands together that you may know each other and perhaps draw up a plan of cooperative effort that will make each race and people about you better, that they may trust one another and admire the good quali-

## Yell Contest Closes Saturday

The yell contest for the A. S. U. H. prize of \$5 will close this Saturday. Entries should be handed before that time to Don Layman or left in the A. S. U. H. office. Considerable interest in the competition has already been shown and a number of good yells have been submitted.

## Krauss Returns From Mainland

Director of Agricultural Extension Service Met at Port

After making a two-month official trip to the mainland, Dr. Frederick G. Krauss, director of the agricultural extension service of the University of Hawaii, returned yesterday on the Matsonia. He was met at port by President David L. Crawford, members of his staff, his associates and officials of the Pan-Pacific Union. He left Hawaii July 25.

Since "Hawaii is the place for him," Dr. Krauss was very glad to be back here where there are cool breezes all year round. He said that in some central states, the heat was so intense that the temperature reached 104 degrees.

While on the mainland, the director attended a number of extension and agricultural conferences. He was present at the Western States Conference of Extension Workers at Bozeman, Montana, held from August 10 to 15; the International Conference of Agricultural Economists at Ithaca, New York, August 18 to 23; and the Pan-American Agricultural Forestry and Animal Industry Conference at Washington, September 8, where he represented the local Pan-Pacific Union.

At the conference held at Ithaca, 77 of the 230 delegates were representatives from foreign countries. Some of the world's leading economists were present at this conference.

Dr. Krauss made a trip to some states in the South especially to observe the methods used there on agricultural extension. He also visited the Universities of California, Oregon, Montana, Washington, and New York, where he met and conferred with specialists and directors of extension. On his way to the East, he stopped at Washington, D. C., where he conferred with the chief and other officials at the offices of the cooperative extension work.

Dr. Krauss is now back in his office in Hawaii hall.

## Student Body Assembly

A short A. S. U. H. assembly of all students will be held in the Lecture hall at 12:30 on Friday. Several matters of importance and interest will be brought up. Everybody is urged to be present.

## Hawaii Quill Makes Bid For One-Legged John Silver, Others In "Treasure Island"

Bold and bloody pirates, where are you in hiding? "Treasure Island" would loot you of your histrionic abilities.

Tryouts for the play, "Treasure Island," adapted from Robert Louis Stevenson's book of the same name will be held on Wednesday night, October 1 at 7:15 p.m. in the new lecture hall.

Mr. Arthur Wyman, dramatics instructor and coach of the university will supervise and assist in the coaching and production of the play.

There are eighteen parts, all of them

masculine except that of Mrs. Hawkins. Here is a real opportunity for the men of the University to show their dramatic abilities. All the parts are good and will require action and skill in putting them over in a tensely dramatic and highly imaginative manner.

The Hawaii Quill is featuring this play in its Stevenson Banquet program on November 13, the eightieth birthday of the famous R. L. S.

A word to the wise, reservations for the banquet should be made immediately with any Quill member.

## Student Awarded \$250 Scholarship

American Ass'n. of Bankers is Donor of Student Loan Fund

Rupert Haramoto, a senior in the department of Economics and Business, has been accepted by the American Bankers Association Foundation for Education to be the recipient of a \$250 scholarship.

The University of Hawaii was included among the institutions to which this scholarship should be awarded three years ago, and it was held by Thomas Daishi for two years.

Loan scholarships are awarded to advanced students of banking and economics who are outstanding in integrity, intelligence, character, competency and aptitude, and who are dependent wholly or in part upon their own resources to enable them to continue their studies. Two years is the maximum time for which a student may receive a loan.

Selection of the candidate is made by a committee consisting of the head of the department of economics, the professor in charge of banking courses, the dean of men, and a prominent banker who shall be selected by the president of the institution and the chairman of the committee.

## STUDENT COUNCIL HOLDS MEETING

Donald Layman, president of the A. S. U. H., called a meeting of the Student Council last Tuesday noon, September 23, in the A. S. U. H. office, at which all but one member of the body was present. The functions of the Student Council were discussed, and suggestions were made concerning its administration on the campus.

In the election of officers which followed the discussion, Kenneth Chun and Mew Keam Chock were chosen to serve as chairman and secretary respectively.

## Youth of Hawaii Organize New Club

Fifteen men of Hawaiian ancestry have organized themselves into a new club on the campus. No name has been selected as yet but it is the opinion of those who were present that the club will cooperate in every way with Ke Anuenue, Hawaiian girls' sorority. In order to perpetuate Hawaiian culture and that an amalgamation will be effected in the near future.

A committee to draw up a constitution has been selected. This committee will report at the next meeting of the club.

## Privileges Given Honorary Members

Complimentary athletic privileges have been extended, by vote of the executive committee, to President David L. Crawford, the Board of Regents, and honorary A. S. U. H. members. The favor thus accorded permits the designated persons to attend all university games free of charge.

Members of the Board of Regents include Charles R. Hemenway, Rev. Akaiko Akana, Dr. Charles B. Cooper, Mrs. Mary D. Frear, Arthur G. Smith, and George H. Brown. Arthur L. Dean, former president of the university, and William K. F. Yap, are the honorary A. S. U. H. members. M. E. Wilberts, Honolulu businessman, was also granted special privileges.

## Faculty Sports

A faculty team composed of Professors Thayne M. Livesay, Frank T. Dillingham, Fred Truman, Ernest A. Rudelius, and Willard H. Eller won three games from a team composed of Professors Harold S. Palmer, Louis A. Henke, Thaddeus R. Coykendall, Fred E. Armstrong, and Carl E. Farden, at the first faculty men's gymnasium class Friday afternoon.

The class plans to meet every Friday afternoon, and possibly an additional afternoon, should there be sufficient demand.

## Hawaiian Theme For Ka Palapala

Year Book Will Be Different and Original, Says Wilfrid Hussey

According to Wilfrid Hussey, this year's editor of Ka Palapala, plans are well under way for a bigger yearbook. The general theme throughout will be Hawaiian, as the idea of the book will be to portray the spirit of greater Hawaii. Colored borders, and panels will depict Hawaii's progress from ancient times until the present day.

"The book will be different and original," said the modest editor when asked as to his plans for the future. There will be six panels, each describing a step in the development of Hawaii's prosperity. These panels will be sketches, colored to fit the general scheme and layout of the book.

The staff has not as yet been selected, and anyone wishing to work on it may see the editor, as this is a student body publication and the cooperation of the students is expected.

In order to facilitate the taking of photographs, plans will be made to have a photographer establish temporary quarters on the campus, where he will be accessible to the general student body.

Bids for the publication will be concluded by the end of the month, and then real work will commence for the staff members.

## Seniors To Conduct Pep Rally, Announced At Initial Meeting

The senior class will take charge of the first pep rally which will be held at 7:30 p. m., October 7, it was announced at the first class meeting Saturday morning.

The following were appointed as the pep rally committee: Wilfred Hussey, ex-officio, Mildred Nerio, chairman, Adeline Marques, Elizabeth Cooper, Caroline Shepherd, and Makoto Nukaga.

Rupert Haramoto, the class treasurer, reported a balance of \$124.15 in the treasury.

President Hussey explained that the two dollars paid by students as senior dues may not be sufficient to carry on all senior activities and that another assessment may be necessary in the second semester, and stressed the need of cooperation on the part of every member of the class if they are to leave a good record behind.

## AGGIE CLUB PLANS MEMBERS' DINNER

The Agricultural club formally began activities for the year at its first meeting last Wednesday. Plans for the year were tentatively placed on the club's calendar. The first event is to be a chop suei dinner in honor of the freshman and new members of the club. The purpose of the affair is to acquaint the new members with the club's work and also as a get-together for both the new and old members.

## OFFICERS CLUB TO HOLD ELECTION

The Officers' Club, composed of senior cadet officers, nominated four candidates to office at its last meeting. According to Colonel Clarke's suggestion each officer acted as a committee of one and nominated the following:

President, Theodore Nobriga; vice-president, Edward Morgan; secretary-treasurer, Rupert Haramoto and James Leong. An election of the four nominees will be held in the near future.

## R.O.T.C. Sponsors Are Elected For The Year

The honorary R. O. T. C. sponsors for the coming year were chosen as follows: Alice Bevins, colonel, 251 votes; Eva Le Clair, Lt. colonel, 248 votes; Dorothy Benton, major, 238 votes; Mildred Bevins, major, 200 votes; Hortense Mossman, major, 204 votes; and Alyce Chang-Tung, staff captain, 190 votes.

## First Pep Rally On Tap Tuesday

Next Tuesday evening a short and snappy rally will be held for the H. A. C. game on the morrow in the gym at 7:30 promptly. The program is in the hands of the senior class committee, composed of Mildred Nerio, chairman; Elizabeth Cooper, Carolyn Shepard, Makoto Nukaga, and Adeline Marques.

## ASUH Committee Grants Request

Extends Sum of \$100 to Hawaii Quill for Magazine

Acting upon a plea by the Hawaii Quill, for the sum of \$100 out of the A. S. U. H. funds to help defray expenses, the executive committee, convening last Wednesday, allotted the required amount.

The money so granted will be used to cover the first number of the campus literary magazine soon to be published.

Members of the executive committee who acted upon the matter include Donald Layman, Wilfrid Hussey, Clement Judd, Kenneth Chun, and Gregg M. Sinclair, faculty adviser.

## Samoan Student To Speak At Gathering Of Y.M.C.A. Council

The University Y. M. C. A. will hold its second bi-monthly council dinner this Thursday evening from 6 to 7:30 o'clock in the A. W. S. room. The first council dinner in the form of a student-faculty get-together meeting was held two weeks ago.

Among the speakers will be Napoleon Tuiteleapaga, son of a Samoan chief and considered an authority on the life and customs of the Samoan people. Mr. Tuiteleapaga will relate to the council meeting much of the private life and customs of his people. His talk will be supplemented by music, especially songs of Samoa. Coming simultaneously with the Samoan investigation by the U. S. commission, this presentation will be particularly instructive and interesting, the Y. M. C. A. announced.

The committee extends an invitation to all students and faculty men to listen to this Samoan student and also to get acquainted with some of the fellows on the campus.

## COMMITTEE SECURES ELECTION DATA ON VARSITY STUDENTS

Headed by N. B. Beck, an A. S. U. H. committee is attempting to secure information on the number of university students who are eligible to vote, those who are also eligible but not voting, and those whose brothers, sisters, or parents will cast ballots at the coming election. In the last division the committee tries to get the number in the immediate family who are eligible.

Questionnaires have been issued to different professors for distribution. Not all of them have been returned to the business office. Results will be tabulated when returns are complete.

## New Instructor, Elvin A. Hoy, Speaks

### On Impressions And Journalism, Thus:

By H. W. C.  
ELVIN A. HOY is his name—this new instructor in the engineering department at the university, who is, someone said, "What every professor should be and so often is not!"

Briefly: he matriculated at Oregon State; earned his M. A. in mathematics; has taught at Oregon State, College of the Pacific, Palo Alto junior college, and finally at Piedmont university before coming here.

At college, he was editor of the DAILY BAROMETER in addition to being on the staff of several of the other student publications. He made an all-school honorary fraternity, one in engineering, and a journalism fraternity, the names of which are Greek, in order: Phi Kappa Phi, Tau Beta Pi, and Sigma Delta Chi.

He believes the newspaper profession is "fascinating" and cannot find sufficient superlatives to do it justice. "The best," he says, "next to engineering!"

Has A Mustache  
He is rather tall, slender, with a small mustache, aged about thirty, handsome, popular with the students, and exceedingly easy to get along with.

He boasts a victory over Donald Layman in barnyard golf and over some bamboo poles or other when on their trip to Kokokahi with the Frosh "Y"

## Hawaii Union Will Sponsor Oral Contest

Three Cash Prizes to Be  
Awarded to Best  
Speakers

MSS. DUE OCTOBER 24

Each Contestant Allowed 5  
Minutes at the  
Tryouts

An all-University oratorical contest, carrying three cash prizes for the three best speakers, will be sponsored by the Hawaii Union, it was announced this week. At its last meeting the Union drew up the rules governing the contest and decided on December 5 as the contest date.

The rules as set forth are as follows:

The preliminary contest shall be in two parts, written and oral. The written manuscript shall be limited to 1500 words and shall be handed in to Mr. Beck on or before October 24.

### Oral Tryouts

A week later, on October 31, an oral tryout will be held, each contestant speaking five minutes from any part of his or her oration. Eight contestants for the finals shall be chosen at this time.

The final contest shall be held on December 5 probably at the new lecture hall. The prizes for the contest are 25 dollars, 15 dollars and 10 dollars to be given to the three best speakers. All undergraduate students of the university are eligible.

## Medical Fee Is Used For U-H Dispensary

Special Rates for Students  
Now Available, Says  
Dr. Faus

Are you afflicted with a cold, sore throat, ingrown toe nail, cauliflower ear, or other minor ailments? If you are, then see Dr. Faus, or the nurse in charge of the University dispensary. That is your privilege. Rather, to put it in a different way, that is where your medical fee (\$2.50) has been invested.

The purpose of the medical fee which is required of all students is, in short, to finance the dispensary and give adequate medical examinations, aid and advice. However, students should not be misled by the idea that the fee includes major cases, but they can obtain special rates through the cooperation of Dr. R. B. Faus. X-ray photographs come under this category. However, the medical fee is insufficient to defray the expenses of running the dispensary, but the deficit is taken care of by the school, Dr. Faus said.

## 1930 Ka Palapala

Students who have not as yet received copies of the 1930 Ka Palapala are requested to see Edmund Lee, business manager of the 1931 annual, as soon as possible.

Lee asks all students to present their receipts as no year books will be issued without them.



# Ka Leo o Hawaii

Published every Wednesday of the college year by the Associated Students of the UNIVERSITY OF HAWAII

Editor-in-Chief.....Hon Sam Hiu  
Managing Editor.....Wilfrid Hussey  
Business Manager.....Edmund Lee  
Circulation Manager.....Edwin A. Chun

## EDITORIAL STAFF

City Editor.....Eugene Ichinose  
Assignments Editor.....Makoto Nukaga  
Copy Editors.....Charles Kenn, Lorraine Husted, Alice Tahara  
Makeup Editor.....Bernard Lee  
Sports Editor.....Don McKenney  
Proof Readers.....Elizabeth Leong, Mew Keam Chock  
Feature Editors.....John Embree, Clarence Akwai  
Society and Club Editors.....Yukino Nakamura, Aline Mann  
R. O. T. C. Editor.....Rupert Haramoto  
Exchange Editor.....Harold Ching  
Contributing Editor.....Donald Layman  
Secretary.....Kum Pui Lai  
Faculty Adviser.....N. B. Beck

## NEWS STAFF

Teruko Agena, Wai Jane Chun, Sadi Li, Eleanor Liu, Adeline Marques, Moses Ome, Helen Quon, Herbert McKenney, Ah Jook Leong, Hannah Yap, Saburo Santoki, Rose Simerson.

Entered as second-class matter at the post office at Honolulu, Hawaii, 1921.  
Tel. 98354 SUBSCRIPTION RATE \$2.50 PER YEAR Tel. 98354

## Home Industries

HONOLULU celebrates for the first time what has been appropriately titled, "Hawaiian Products Week."  
Sponsored by the Chamber of Commerce, an exhibit of Hawaiian products is now in full swing at the Armory. Thirty-six different and locally produced merchandise are on display in the trade show of as many, if not more, Honolulu business firms.

The main purpose of Hawaiian Products Week is to instill in the buying public an appreciation for home industries. The territory today provides a surprising variety of goods. It is the appreciation of this ability of the territory to provide some of the things that are needed that underlies the exhibition now in progress and of the entire week generally.

A visit to the Armory this week will prove worthwhile and interesting to all students.

## Torn Bits of Paper

NEWSPAPERS, as such, provide certain succulent reasons for being. There is a time, however, when even newspapers, and papers of all kinds generally, become nuisances.

Such an instance occurred at the Varsity-Alumni grid game last Saturday. During the intermission period, torn tid-bits were thrown into the wind and eventually became strewn in haphazard fashion over the green.

While the sight no doubt pleased its inventors immensely, the inconvenience so given to the stadium management and the football players was far from a happy thing.

University students have been requested to cooperate in the future regarding this matter, and are strongly urged to carry their papers home with them and use them for some other worthwhile purposes.

Now is the time to make your vote count for something. It should not be a question of loyalty to this or that party. It should be loyalty to your own government first.

## "Adjusting One's Self"

WHEN THE Apostle Paul wrote "I am become all things to all men," he did not mean that he could be as wicked as the saintliest, but that he could harmonize himself with his associates and live agreeably with all with whom he was thrown into contact. This text carries an important teaching for every one, especially young people who are just starting a career.

The failure to adjust himself to his surroundings is the explanation of the failure of many a man to succeed in his undertakings. Of course, the art of being agreeable is the result of training and self-determination. That young person is fortunate whose parents have taught him to play harmoniously with his playmates. Anyone can do much towards making himself agreeable and thereby develop a spirit of co-operation. This does not mean that one should not seek to better the surroundings in which he finds himself, but that in so doing he will work diplomatically and with the least possible antagonism. It is hard for us to be sweet and agreeable when others hold diverse opinions, or when our new job takes us into fields of different social conditions.

Many a young person, and frequently an older one, has found himself sent to a town or region where social conditions were slow and dull and quite unlike what he had been used to. He has felt that the people of the community were beneath him in social strata and kept aloof from them or treated them with contempt. This of course, was fatal and failure of the appointee was the result. He failed to apply the philosophy of Robert Burns' poem "For A' That, and A' That." Society is made up of persons and conditions of the greatest diversity and yet it persists and moves forward. Our part is to fit in and move with the course of events.

—Ex.

The true reward of education is the privilege of living at your best. Whatever else happens on the way may be good luck, but is minor luck.—Ex.

The curriculum of our life and death is mostly made up of required courses.—Rev. Henry Sloan Coffin, D.D.

## George Pohlman Of Redlands Has Much To Say As To Hawaii's Beauty

"The mocking birds are singing, the chrysanthemums are blooming, the autumn leaves are falling, and Kenji Fujiwara is, without a doubt, enjoying the beauty of the University of Redlands' campus and its wonderful surroundings."

Such were the words uttered by George Pohlman, one of our exchange students from the Pacific coast.

Describing the Redlands' campus and its surroundings, he says: "The Redlands' campus is situated in a beautiful valley 1400 feet above sea level in the largest orange belt in the world. Because of its imposing buildings and delightful semi-tropical gardens, as well as its majestic surroundings of lofty snow-capped mountains, the campus has been said to be one of the two most beautiful in the United States.

600 at Redlands  
Six hundred students enjoy the use

of the fifteen modern concrete buildings together with some of the finest and most complete equipment found in any college of its size in the west. The University was founded in 1909 by the Baptist denomination and has shown a remarkable growth and development in the twenty-one years of its existence.

"Though we have not heard directly from Kenji we trust that he has already been profoundly impressed by his surroundings and his associates. Kenji is the first exchange student sent to the mainland by the University of Hawaii. He may get homesick for his many friends here as he will not have more than four or five oriental friends with whom to associate on the campus. But if Redlands were true to its reputation, Kenji will have a most pleasant and worthwhile experience in the Southern California college.

# SOCIETY

## ORGAN RECITAL HELD AT CENTRAL UNION

The tenth organ recital entitled "East and West" was held at the Central Union church on Friday evening, September 26 under the capable direction of Paul Tanner, who is now on our faculty staff. He was assisted by Royden Susu Mago, noted Japanese tenor.

The program included "Toccato and Fugue in D Minor"; Gavotte from "Iphi-genia"; Prize song from "Die Meistersinger"; "Caprice Viennois"; Introduction from "Sonata Romantica"; "A Picture of Orient"; "Sakura"; "Fisherman's Song"; "Ode to Fujiyama"; "At the Foot of Fujiyama"; "Ah, Moon of My Delight"; and "In the Palace of the Rajah."

## WOMAN FACULTY CLUB HAS FIRST MEETING

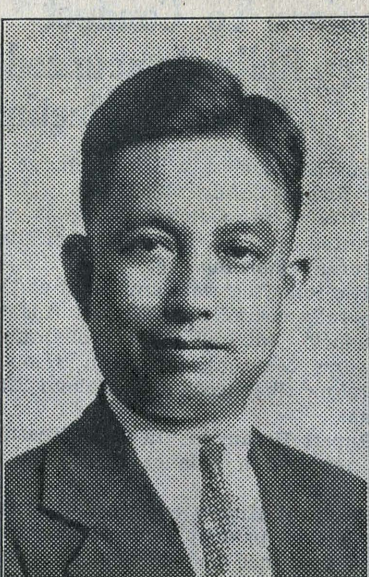
The first meeting of the Woman's Faculty club was held at the home of its president, Mrs. A. R. Keller on Tuesday afternoon, September 30 at three o'clock.

After the business was over, tea was served and a delightful social hour

"I am not a real estate agent and I am not trying to sell you the Redlands' campus. I have mentioned these things about Redlands because I thought that you would be interested to know something about the place to which you have sent your first and only representative.

"Now for a few remarks concerning my personal impressions of Hawaii. Hawaii surpasses my highest preconceived idea of the place. I am profoundly moved by the splendid spirit of hospitality and friendliness which it has been my good fortune to enjoy ever since I set foot on Hawaiian soil. There is nothing like your spirit of democracy and inter-racial brotherhood on the mainland.

"It is true, of course, that the social situation at the start is different here. But it is inspiring, refreshing, to get into a group such as is found on this campus. I sincerely hope that I shall be able to do as much for the University of Hawaii this year as it is going to do for me. And I hope that this exchange scholarship project will be the means of bringing about a fine relationship between this university and those on the mainland and that each institution will derive tangible benefits from this intercourse. On behalf of the University of Redlands, I bring sincere and hearty greetings to you of the University of Hawaii."



JAMES CONCHEE

for  
REPRESENTATIVE  
FIFTH DISTRICT

Republican Party

"May I have your vote on  
October 4th?"



Robert K. "Bob"  
Mookini

Republican candidate for the board of supervisors. An official of Junior High athletic events, the "youngest candidate" in the field intends to do more for the young boys of the city in the way of public recreational facilities.

was enjoyed. New acquaintances were made and old ones were renewed by all those present at the affair.

## R. F. D. TO ENTERTAIN FRIENDS AT TEA PARTY

The R. F. D. has issued invitations to a tea to be given at the home of Wilhelmina Robinson, 1118 Hassinger street off Pensacola street on Saturday afternoon, October 4.

The R. F. D. is a social club on the campus, organized by a group of girls in 1928 for the purpose of promoting social relations among the university co-eds.

The officers and members of this organization are Willa Robbins, president; Eloise Skog, vice-president; Wilhelmina Johnson, secretary; Helen Leithead, treasurer; Janet Bell, Lottie Kolhof, Thelma Coile, Henrietta Fernandes, Bertha Spillner, Hortense Schwallie, Frances Hurd, and Wilhelmina Robinson.

## KA PUEO HOLDS TEA AT CAROLYN SHEPHERD'S

Ka Pueo, prominent campus sorority, entertained at a tea for its members and friends at the home of Carolyn Shepherd on Saturday afternoon, September 27 at four o'clock.

The beautiful color scheme of lavender and yellow was predominant in the spacious home where the guests gathered for the occasion.

Among those invited were the Misses Beth Bartlett, Dorrance Chandler, Ruth Tay, Betty Tay, Marian Glenn, Betty Harvey, Virginia Hammond, Betty Henne, Irma Linnemann, Jessie McKenzie, Velma May, Emily McCloy, Catherine Mullahey, Jane Patterson, Carolyn Perkins, Lois Potter, Gertrude Spillner, Alice Lacherie, Clara Berry, Jean Kinsley, Mary Neilson, Carolyn Neilson, Peggy Field, Mary Moodie, Thelma Olsen, Betty Turner, Martha Cannon, Elizabeth Larsen, and Virginia Castle.

## NOTICE

Students,  
Members of the Faculty,  
Alumni:

The Executive Committee of the A. S. U. H. has issued an order, "To discontinue the sale of athletic ticket books after the 1100 mark has been reached."

If you care to attend athletic games at a reduced rate, I suggest that you leave your check at the Business Office at once in order to take advantage of this opportunity as there are only 60 books left.

T. Searle,  
Graduate Manager.

## 3 CHINESE STUDENTS GIVEN SCHOLARSHIP

Eleanor Chun, Kenneth Chun, and Yeu Wah Wong have been awarded the Chinese Community Scholarships for this college year. The scholarships are from the income of a \$3,000 endowment fund donated by the Chinese community. They are awarded to students of Chinese ancestry who are members of the junior or senior classes. This scholarship was first awarded during the school year of 1925-26.

Honest  
Pat  
GLEASON  
for  
SHERIFF

Let's give them a big aloha vote!

VICTOR FOR VICTORY

HOUSTON

[Kaleoaloha]

He has served you well at Washington. His experience equips him for even greater future service. Let's show our confidence and appreciation by rolling up a rousing Aloha Vote for Victor Kaleoaloha Houston!

WRIGHT FOR THE RIGHT

Mayor WRIGHT

[Ana Aina]

Four years of service as Supervisor has proven his value to the community. Let's promote him to the office of Mayor with an enthusiastic Aloha Vote!

and for Senators

Brown

[KEIKI A KAHALELAUKOAI]

Robinson

[MAKA LOPIKANA]

Sylva

[KAHOLO-PELEKANE]

Francis I. Brown, Mark A. Robinson and Joseph L. Sylva—three capable men trained in legislative service. A great Aloha Vote for them also!

and for City and County

Treasurer David L. Conkling

Clerk David Clerk

Kalauokalani

Both elected already by unanimous consent of the community but let's kokua them heartily with a heavy Aloha Vote!

Let's show the world the mightiest good-will vote ever given any candidate in the history of Hawaii.

Let's show these loyal citizens of Hawaii what Aloha means!

All these men are unopposed within their own party, which shows the confidence inspired by their previous service in public office.

We ask for your vote on October 4 for these candidates.

REPUBLICAN CAMPAIGN COMMITTEE,  
Alvah A. Scott, Chairman.



## Alums Whipped By Varsity In Torrid Clash

Judd and Howell Count for Deans Via the Air; Score 12-6

### ALUMNI SCORE FIRST

Oldtimers Flash Powerful Defense; Many Subs See Action

In what proved to be a torrid contest in more ways than one, the Rainbow varsity took their older brothers, the Alumni down the line for a 12-6 victory last Saturday at the Stadium. The weather was torrid, the players were torrid, and the crowd was torrid—and horrid.

Coach Klum started his second string and they were good but not quite good enough. After Nagata kicked off for the Deans and the Oldtimers had exchanged punts with the Youngsters, a penalty called on the varsity for illegal use of the shift and a fumble, found the ball in possession of the Alumni on the Rainbow 30 yard line. With the game only 10 minutes old and the supply of pepper not yet exhausted, the Alums lost little time in cashing in on this golden opportunity. Be it said to their credit that they did the job up properly even though it was the varsity second team opposing. A ten yard pass, Wise to Fernandez, a five yard slice off tackle by Wise, and a fifteen yard slash by Bill Blaisdell right through the Dean line accounted for the Alumni first and only score. The Manoa mentor thereupon yanked his Spartans and threw in the entire first team.

The regulars then proceeded to take matters in their own hands, and despite plenty of misfortune, hard luck, or what have you, scored two touchdowns before the end of the first half. It was quite evident, however, that it was not a Rainbow day. Possibly it may have been too early in the season, or else the Alumni were just plain powerful, but time alone will tell. At any rate the Deans won the old ball game.

Judd scored first for the Rainbow Warriors when he took a beautiful heave from Johnny Wise on the dead run and scampered some few remaining steps over the goal. The pass connected for fully 30 yards. Not five minutes later, Ted Nobriga dropped back and rifled another 30 yard beauty to Hawkshaw Howell who shook loose several Alumni would-be tacklers, straight armed Eddy Fernandez, and tore the remaining 15 yards to the Alumni goal. Hawkshaw certainly looked like Red Grange on this play. None of the touchdowns were converted.

The Alums, pre-game favorites down town, certainly looked good when they got on the field. They had it over the regulars in beef as well as experience, and the varsity certainly had their work cut out in whitening down to a reasonable size. The last half was a rather tame period, because of the oppressive heat, during which most of the action seasawed back and forth in mid-field.

Penalties, fumbles, and what not dogged the varsity all afternoon. No sooner would Kaakua reel off some nice yardage, or Nobriga intercepts a pass than the play would be called back and a penalty invoked. Indie did some fine offensive work as did Johnny Wise. Norman Kauaihilo stood head and shoulders above any of the linemen in all-around play. Kaakua placed his kicks nicely, keeping them away from Fernandez, and constantly out-kicked him during the game.

Summary follows:  
Pos.—UNIVERSITY ALUMNI  
REL—Naukana Thompson  
LER—Wescoatt W. Holt  
RTL—Crowell Aiona  
LTR—Field Baker  
RGL—Among Kaao  
LGR—Abe McKenzie  
C—Nahalea Art Nobriga  
QB—Jonah Wise B. Blaisdell  
RHL—Nagata Wise  
LHR—Aiwohi E. Fernandez  
FB—Crosby Macfarlane

You Get Your Steamer Calendar From Alexander & Baldwin, Ltd.

Get Your Insurance There, Also

## Girls Showing Up Well In Gym.

Hockey Played for First Time on University Campus by Girls

For the first time in the University of Hawaii, pin ball, a sport similar to basketball, is being played by the girls in the athletic classes, with Miss May Gay in charge. This sport is very popular in schools on the mainland. The object of playing this game is that it leads to basketball. About 70 girls, of which 50 are freshmen, are playing this game.

Basketball will be played next month. Class competition in this sport will probably be held within the next two months.

Tennis matches are being arranged by Miss Gay with other schools' and alumni teams. The matches will take place in November. Girls interested in trying out for the 'varsity team are asked to see Miss Gay this and next week. Practices will be held in the morning.

A hockey game was played for the first time on the campus last Saturday morning when two teams got together for a stiff mixer. For beginners they displayed an excellent fundamental knowledge and Simerson, Jarrett, Hammond, Kaluakine and others are proving fine material for the new sport. It is hoped that a series of games may be arranged with the girls of Kamehameha School.

Mrs. Elizabeth Mack has been putting the swimming classes through their paces and reports excellent progress. The good swimmers are helping and advising the ones who cannot swim by the coach and pupil method. Mrs. Mack believes that it will not be long before her class will rank as first class mermaids.

## Aggie Club Issues Challenge To Rivals

In keeping with the exceptional brotherly interest which the Aggie and Engineering students have always shown for each other, the Aggie club has spiritedly penned the following challenge to their little schoolmates:

To the Engineers Club:  
The Aggie club issues through Ka Leo this challenge to you Engineers to a game of football to be played sometime in the near future. To insure the success of this event it is hoped to arrange a Chop Sui Dinner, to be held after the battle, at which the victors will be the honored guests of the conquered.

If former defeats have not thoroughly subdued your Engineers' fighting spirit, just get in touch with me by dropping a note in my box for an appointment or by any other means, and the details of the game will be arranged.

Yours for a good feed—  
KWOCK WO TOM

Substitutions: Varsity—Judd for Naukana; Howell for Westcott; Hooper for Crowell; Martinsen for Field; Toyama for Among; Lyman, Coelho for Abe; Kauaihilo for Nahalea; T. Nobriga for Jonah Wise; Kaakua for Nagata; Johnny Wise for Aiwohi; Indie for Crosby; Kealoa for Johnny Wise.

Alumni—S. Fuller, B. Farden for W. Holt; Steere, Coxhead for Thompson; Whittle for Coxhead; Wriston, Anderson for Baker; Duval for Aiona; Fat Young for McKenzie; Hanohano for Young; Kaaua for Kaao; Heminger for Kaaua; Cruickshank for Nobriga; Traut for Cruickshank; W. Fernandez for Blaisdell; Whittle for Wise; Fincoe for Macfarlane.

Officials: Ez Crane, referee; Louie Stephens, umpire; Lieut. Bidwell, headlinesman; Red Zimmerman, timer and field judge.

## Honolulu Sporting Goods Co., Ltd.

carry the best for  
Baseball, Volleyball,  
Tennis, Track, Golf,  
Boxing, Swimming,  
Fishing Tackles

Call or Send for Catalogues

PHONE 6253  
COR. FORT and HOTEL STS.

## SPORT COMMENTS

By DON MCKENNEY

Westcott Shifted  
Organized Rooting  
Field Blossoms Out  
Co-Eds And  
This Thing Called Nite Football

Proc promises that the varsity centers, Reed, Hannah, and Fairchild will all be in shape for the H. A. C. clash. The last named has had the most experience, and if he gets into the right mental attitude, could become the regular varsity center.

Gravy Westcott has been shifted from left to right end, and will be given a chance to play regularly if he develops more real football sense. He has the ol' fire and ginger, and that goes a long ways on any team.

At present there are two positions causing lots of worry—namely right end and right half. Kealoa, Nagata, and Jonah Wise are all possibilities. Whichever two show the most blocking, interference and defensive ability will get the jobs.

Kauaihilo, who played such a bang-up game at center last Saturday is going back to his old position at guard. Norman is of more value to the team there than at any other place.

A little more organized rooting on the part of University men would certainly help immensely at the games. Improvised yells are never as effective as organized, practised rooting. Extemporaneous offerings such as "Watch those passes," "Get your man," "We want a touchdown," "Sock 'em with a brick, boys" are very crude to say the least and are certainly out of place at a college football game. If given at all they might be rendered at a girl's basketball game, but never at a varsity contest.

## 6 Clubs In Campus Football League

135 Lb. & 160 Lb. Leagues Formed; Chop Suis at Stake

Six clubs have decided to enter teams in the campus football league, it was made known at a meeting of those interested in forming the league, held last Wednesday in the Ka Leo office. In addition to the Shy Violets and the Locker Room, last year's members, the Acorns, Y. M. C. A., Ambassadors, and the Nakagawa Dormitory are competing this year.

"Pump" Searle, graduate manager of the University, "Chicken" Horii, E. Ichinose, T. Murakami, S. Santoki, and R. Smythe, the organizers of the league, drew up the following rules: Two teams of a weight limit of 135 pounds and 165 pounds are allowed from each club. The roster of each club is limited to 35 players and those that are turning out for the Varsity are ineligible. The games are to be played when the Varsity team leaves for the mainland.

The prize at stake for the winners of each division is a chop sui dinner. The managers of each club under the direction of Mr. Gill will meet today at lunch hour in the Ka Leo office to draw up the schedule, to approve the list of players of each club, and to discuss any other business that may come up.

They "make the team" at every school.

A. G. SPALDING

Athletic Goods

Sold by the

Sporting Goods Department

E. O.

HALL & SON

Ltd.

"The House of Dependable Merchandise"

FORT & KING

## Delicious Food

### BARBECUE INN

Tempting dishes—appetizing sandwiches—good service—brings our friends back to the Barbecue Inn time and time again. You'll like it, too.

PROMPT, REGULAR AND AUTO SERVICE.

MRS. T. SHIKATA, Mgr.

Phone 91981

2015 Kalakaua Ave.

## HONOLULU'S LEADING THEATRES

### PRINCESS

3 Days Starting SAT., OCT. 4th

You'll hear John Gilbert talking from the audible screen in "REDEMPTION" with Renee Aadorce, Conrad Nagel, Eleanor Boardman

4 Days Starting TUES., OCT. 7th  
WILLIAM POWELL as PHILIP VANCE in the S. S. VAN DINE Mystery Thriller "THE BENSON MURDER CASE"

### HAWAII

Week Starting SAT., OCT. 4th

A Riot of Rainbow Glory!

"ON WITH THE SHOW"

Girls & Girls Melody & Mirth with Betty Compson, Arthur Lake, Sally O'Neill & 100 Other Stars

Entire Show in Color

### EMPIRE

3 Days Starting SUN., OCT. 5TH

Rod LaRoque and Doris Kenyon in "BEAU BANDIT"

WED., OCT. 8TH

Sally O'Neill and Jack Egan in

"BROADWAY SCANDALS"

### LIBERTY

Week Starting MON., OCT. 6TH

Grand Opening

STOCK SEASON

THE WILBUR PLAYERS with Barbara Brown and Richard Allan and Richard Allan in

"LET US BE GAY"

Matinees Wed. and Sat. Each Night at 8 p. m.

## Rotcy Quintets Get Under Way

Luke Gill Announces Rules Governing Basketball Circuit

At the request of the R. O. T. C. department, Luke Gill, the new director of intramural sports, announces that the 1930 race for the inter-company basketball championship will start on October 6.

Due to the number of teams entered, it has been found necessary to make two sections of five teams each. A draw was held Saturday morning and Companies K, G, Band, Headquarters and M were placed in League A. Companies F, H, L, I, and Howitzer will be in League B.

Each league will play a double round-robin schedule. The two teams in each league having the highest percentage at the close of the schedule will meet in an elimination series for the championship and the chop suey dinner.

The director of intramural sports has drawn up the following rules:

1. Games will be played in quarters of eight minutes with two minutes between quarters and five minutes intermission between halves.

2. Games will be played according to the approved basketball rules.

3. Games must start on scheduled time. The team not ready to start will forfeit the game.

4. The department of intramural sports will furnish referees. Each team will furnish its own timer and scorer.

5. All registered students and members of the R.O.T.C. are eligible, except, varsity basketball lettermen and members of the varsity team.

6. No player who has registered for one team and who has played one game for that team, can transfer to another team.

7. To postpone a scheduled game, the team unable to play must notify the manager of the opposing team 24 hours before the game and secure his consent to the postponement. All postponed games will be played within 36 hours after the scheduled time.

8. Protests must be made on the court at the time of the violation of the rules is committed. (No protests can be made on the referee's decisions.) A written protest must be handed to the director of intramural sports within 24 hours of the floor protest. The game must be completed at the time.

9. Each team will be allowed a limit of ten men.

The schedule will be found elsewhere on this page.

## AWS Puts Up Cup For Girl's Sports League

In Response to Growing Desire to Interest All Girls in Sports

### COMPET BEGINS SOON

Miss Gay and Mrs. Mack are Enthusiastic Over Latest Plea

Elizabeth Cooper, president of the A. W. S., announced at their last meeting that a suitable trophy or cup will be offered this year for the first time by the A. W. S. to the class winning the highest number of points in an Inter-class Athletic contest for girls which will be gotten under way shortly. This offer should prove a most welcome incentive and impetus to the promotion of girl's sports at the University, for they should be encouraged to enter competition, is the belief of Miss May Gay, director of Physical Education for women.

Both Miss Gay and Mrs. Elizabeth Mack, her assistant, are positive that such a contest would bring fine results. It is their belief that the girls of the university should take more interest in sports. At present they are only interested in sports as a class room subject; once outside of class, their interest flags and slacks up almost entirely quite often.

Sports are not harmful. As a matter of fact, indulging in them offers not only athletic training, but opportunity for bodily exercise as well. According to Miss Gay, this is what some girls need most of all. As is usually the case, the same girls who have attained excellency in one sport are the ones who turn out for the other teams and form the backbone of the entire athletic program. It is to get away from this athletic "clique" that the A. W. S. have evidenced such kookia in endeavoring to bring the greatest number of girls out and interesting them in athletics. Of course it will be impossible for every girl that turns out to make the various teams, but they can at least learn the games, get the exercise if nothing else, and in time may become good athletes themselves.

### NOTICE

There will be a meeting of the Home Economics club in Room 205 on Friday, October 3. All members are urged to attend.

### CLOSEST TO THE UNIVERSITY

#### Pawaa

GOLF COURSE

Punahou and Young Sts.

One of the

Best Courses

TRY IT ONCE!

YOU'LL LIKE IT!

MARVIN CHURCH, Mgr.

### The Better 'Ole

Beretania & Makiki Sts.

—Croaking Frogs!  
—A box of candy if you enter The Silver Moon in one!  
—Loop the loop!  
—The giant fish and many other interesting holes.  
—A Silver Cup to winner each week for low score.

Only a stone throw away!

## BOB YATES

1127 S. Beretania

SPORTY HOLES

CLEAN and BEAUTIFUL

AMPLE PARKING SPACE

### Play At

#### Pal Put

GOLF COURSE

North King Street

Next to Houston Arena

NONE TRICKIER

THAN PAL PUT



## MINA TURE GOLF COURSE

Waialae Rd., next to Bailey's Groceria

## Coming Events

### Aloha Patrol Tournament

This evening, 7-9 p. m.

Prizes Will be Given Away Oct. 15

First Prize now on exhibit at E. O. Hall & Son

Second Prize at Mina-Ture

## FOR ALL SPORTS

Our Stock Includes an Extensive Line of the Best in

Baseball

Basketball

Football

Boxing



Tennis

Track

Soccer

Swimming

Golf

THEO. H. DAVIES & CO., LTD.

SPORTING GOODS DEPT.

—Agents—

A. J. Reach—Wright & Ditson, Inc.



## Varsity Band In Rapid Progress

### To Hold Initial Appearance at First Night Game With Hacks

The R. O. T. C. band is getting along superbly, according to Director Paul Sanders. The boys have shown plenty of interest and cooperation, and they are a bunch of willing-workers, says Sanders.

The sophomores in the band have a class in music theory in addition to the three periods of practice. The boys do not follow a formally organized course, but take the course where their music curiosity leads them.

The band will make its initial appearance at the first night football game with the HAC on October 8. Paul Sanders also expects to give a number of dinner concerts at the cafeteria as soon as the band will be able to give concert numbers.

Following are the members of the band and their respective instruments:

K. Aihara, flute; R. Brummage, cornet; W. Brumage, clarinet; E. Capellas, cornet; A. F. Ching, clarinet; H. F. Choy, clarinet; R. Choy, trombone; E. Y. Chun, E flat clarinet; Y. P. Ho, alto horn; D. H. Houghten, alto horn; C. Jim, clarinet; D. Kojima, cornet; B. C. Lee, baritone horn; S. Moriwaki, tenor saxophone; R. Nikaido, clarinet; T. D. O'Brien, cornet; R. Pang, drums; T. Shirakata, drums; S. Taylor, baritone saxophone; Y. S. Wong, drums; A. D. Yap, trombone; D. Yee, bass tuba; C. K. Yoshioka, alto saxophone; A. C. Young, alto saxophone.

### Rev. Purnell Speaks At Frosh Y Luncheon

At the regular Frosh Y weekly luncheon meeting held last Thursday, at the U. H. cafeteria, Rev. Purnell of the First Christian Church was the speaker for the day.

He spoke on the subject "How to be Happy." He brought out three main points on how we can be happy. They are trusting in God, having a boundless hope for the future, and serving our fellow men.

The next meeting will be held on Thursday, October 2, at 12:30 at the U. H. cafeteria. George Pohlman, an exchange student from Redlands University will give the boys a special treat by giving several dialogue and reading stunts.

A student wanted to know why he wasn't picked as one of the exchange students to the mainland. Believe it or not, the authorities at the university must stop somewhere. And they don't want to be kept awake with the horrible realization that they swindled some other school in the exchange.

### EVERY STUDENT Needs the New Remington Portable Typewriter!

Remington Rand Business Service Inc.  
Dillingham Transportation Bldg.  
Phone 2755

### READ The NIPPU Jiji

Hawaii's Largest Japanese Newspaper



Published Daily & Sunday in Japanese & English

PHONE 6091

928 Nuuanu St., Below King

### \$50 Is Added To A.W.S. Loan Fund For This Semester

A sum of \$50 was added to the A. W. S. loan fund by the Associated Women Students this year. This brings the total amount to \$100 for use among the coeds.

This loan fund was started last year for the sole purpose of meeting the urgent needs of university women. Dean Bilger is in charge of the money and according to her all the money borrowed last year has been duly returned. This prompt remittance enables the loan fund to be always in circulation.

It is the hope of A. W. S. to increase the funds from year to year by economizing on socials and other such affairs.

## Movies

Opening with the Saturday matinee and for the entire week at the Hawaii the special treat will be the all-color extravaganza, "On With The Show." This attraction differs greatly from all previous screen musical shows inasmuch as it is a double combination entertainment—a drama being enacted back stage while the frivolity is going on before the footlights. A show within a show aptly describes "On With The Show" which features Betty Compson, Arthur Lake, Sally O'Neil, Joe E. Brown and 100 players.

"Redemption" which has been adapted from Tolstoy's novel "The Living Corpse" will be the feature attraction at the Princess for the three days starting Saturday matinee with John Gilbert in the star role along with Renee Adoree, Eleanor Boardman, Conrad Nagel and many others. William Powell comes again as Philo Vance in the S. S. Van Dine detective thriller "The Benson Murder Case" for the four days starting Tuesday matinee at the Princess.

Sunday evening brings to the Empire for a three day showing the romance drama of the flaming frontier "Beau Bandit" with Rod La Roque and Doris Kenyon in the leading roles.

Next Wednesday for four days the Empire attraction will be "Broadway Scandals" with Sally O'Neil and Jack Egan.

The Wilbur Players open their new season at the Liberty theater on this coming Monday evening, presenting for their initial attraction the Rachel Crother's comedy-drama, "Let Us Be Gay."

Barbara Brown, the new leading woman, and Richard Allan, the favorite player of last season, will essay the leading roles, while in prominent support will be seen Norman Leach, Geraldine Palmer, Florence Bell, Walter Bonn, James Dillon, Ford Bancroft, Berkeley Buckingham, Michel Dupre, Walter Smith, Howard Pay and Sidney Bannon.

Throughout the season the Wilbur Players will offer a complete change of program each Monday evening and in addition to the evening performances, nightly with the exception of Sunday, matinees will be given on Wednesday and Saturday afternoons.

Taisho Printing Co.  
"Quality Printers"  
Beretania and Nuuanu Sts.  
Phone 4152  
Let us give you an estimate.

### MAILE BUTTER

comes from the finest grazing section of New Zealand.

Fresh On Every Boat

At Better Grocers

Metropolitan Meat Market

Distributors

## Evening Courses Unique & Varied

### Elementary & Advanced Accounting Will Be Taught

Some unique courses will be offered by the Extension department of the University of Hawaii under instructors who have done considerable foreign study. One of these will be the introductory course of "India and Its Culture," offered under the leadership of George A. Odgers. Odgers was for ten years an educator in India. He is now the head of the English department at the Kamehameha Schools.

Mrs. Frances Way Newton will have charge of a class in interior decoration. She is a graduate of the University of Michigan, and has also studied fine arts in New York and in Europe. This course which consists of lectures, demonstrations and discussions on planning and furnishing the home, will commence on Thursday night, October 2.

#### Elementary Accounting

There will also be classes in elementary and advanced accounting, partnership and corporation accounting, income tax procedure, and investments by Professors M. M. Graham and V. W. Bennett, E. J. Greaney of the B. F. Dillingham Co., and E. W. Lindburg of Cameron and Johnstone Co.

For those desiring to do literary work, Mrs. Lola B. Bellinger has a course in children's literature, G. J. Peavey in written English, and N. B. Beck in parliamentary procedure. G. T. Kunimoto will conduct two classes in Japanese conversation.

Other courses to be offered are: practical costume design by Mrs. Anna B. Dahl; and elementary algebra, trigonometry and analytical geometry by Miss M. D. Vernon and Professor E. C. Webster.

### WYMAN AND REMPEL TEACH DRAMATICS

#### Laboratory Work to Consist of Production and Stage Problems

A course of exceptional interest and value in the field of dramatics is being given Tuesday and Thursday evenings at the University by Prof. Arthur Wyman and Mr. Henry Rempel.

Several distinct advantages are offered, including complete facilities for laboratory work in production. A theatre, stage, miniature stage, and all the theatre equipment of the university "little theatre" will be used. Lighting effects, costumes, scenes and technique problems will be worked out in detail on the miniature stage, then reproduced in the finished state on the main stage.

Laboratory work of the class will consist of working out the production and staging problems of university plays and also the plays of any school or organization that wishes aid.

The new stage of the university has as good equipment as any in the city so its use for the class will be a special advantage for those taking the course.

Classes meet Tuesdays and Thursdays from 7-9 p.m., and the course is open to anyone interested. The meeting next Tuesday evening will be held in room 216, Hawaii hall.

#### FOOLISHMENT NUMBER 23674

Says the Waikiki Bride: I never can satisfy my husband at breakfast. I never seem to be able to break an egg into the pan wrong side up!

Students hereabouts all get a headache when the name of Albert Einstein is brought up. He is one hard person to understand. But in Germany, says a correspondence, all the students holler for "Ein Stein"—to the bartender of the beer shop!

### H. Schultheis

University Photographer

Young Hotel Bldg.  
Phone 2454

## Japanese Students Hold Social And Business Meeting

The Japanese Students' association met for the first time this year at the Y. W. C. A. Fuller hall on Saturday evening, September 27.

A short business meeting preceded the evening's program. A report of the membership campaign was made by Earle Okamura, the Washington Day picnic, and the Japanese comedy to be presented in April were discussed.

Thomas Fujiwara, sophomore, was in charge of the program. It consisted of many surprise features.

Those on the reception committee were Shizuko Nakagawa, Mollie Koike, Mildred Nerio, Hazel Uemura, Peggy Kodama, Shizuko Teramoto, Aggy Kimura, Alice Tahara, Daisy Yamaguchi, and Katherine Nakamoto.

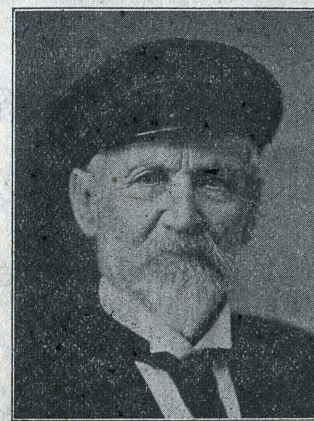
The following served on the refreshment committee: Sumiyo Hoshino, William Tsuji, Tsuruko Ageta, Fusa Hayashi, Elsie Hayashi, Toku Yoshizawa, Toshiko Sueoka, Bernice Hamamura, Irene Hamamura, Margaret Hasegawa, and Helene Taketa.

#### NOTICE

There will be a meeting of the Dramatic club this Thursday night at 7:30 o'clock in Hawaii hall, Room 114. All members of the club are requested to attend. All those who are interested in dramatics are also invited to be present.

## FOR REPRESENTATIVE

### Henry Cobb-Adams



Solicits your vote at the primary election for

#### REPRESENTATIVE

from the Fifth District on the Republican Ticket

## Good Government Platform

Cobb-Adams is a man with a good reputation and experience and ability to work

Let Us Take Care of Your Next Photographic Job.  
**City Photo Studio**  
The Largest and Best Equipped Studio in Hawaii.  
15 S. Hotel St. Phone 3585

**PACIFIC PICTURE FRAMING CO.**  
17 S. Hotel St.  
Picture Framing a Specialty  
Xmas Cards

**Star Tailoring Co.**  
59 S. Beretania St.  
Leading Military Tailors in Honolulu

**HONOLULU CHOP SUI HOUSE**  
Delicious Chop Suis in ALL Styles  
Parties Can Be Arranged  
Open 9 A. M. to 11 P. M.  
32 N. HOTEL ST. PHONE 1713

**GIRLS! ATTENTION**  
No girl can be beautiful with Pimples and Blackheads. Our Acme Cream and Treatments can overcome these conditions and give you back your School Girl Complexion.  
**LOUISE SMITH MARINELLO SHOP**  
1110 Fort St. Phone 2091

## Love's Lyrics

Music by Anybody



The dogs ran up and licked my hand  
They wagged their tails and barked aloud;  
The children came—a happy band—  
I tell you, I felt pretty proud;  
For he whom dogs and children trust  
Is one fine guy—I thanked my stars  
Until I heard—admit I must—  
"I saw you buy some Love's Fig Bars."

(After all, you can't fool children or dogs.)

## The Liberty House

Apparel Headquarters

for

Smart Fashionable Collegians!



### Cool Summer Frocks

For Warm Honolulu Days

Dainty ensembles and one-piece dresses for Sports — Afternoon — Evening

Weekly shipments from New York

\$6.50 \$8.50 \$10.50 \$12.50

Inspection and Comparison invited

**RAMONA DRESS SHOPPE**

ENTRANCE ON UNION STREET  
Hotel and Union Sts., Upstairs

## The Bank Of Hawaii, Ltd.

KING AT BISHOP

Commercial and Savings

Over 50,000 Depositors

Start Your Savings Account Today