

# Ka Leo o Hawaii

THE VOICE OF HAWAII

NEXT KA LEO EDITION  
ON  
OCTOBER 7

Vol. XV

HONOLULU, HAWAII, THURSDAY, OCTOBER 1, 1936

No. 1

## Hustace Fills Positions on Four Boards

**ASUH Council Approves Ten New Members to Various Campus Bodies Affiliated With UH and ASUH**

Ten new members were appointed to the various ASUH boards by the Student Council in its first meeting of the year. Delegated to the board of debate and forensics were Calvin McGregor, prominent in many student body activities; Clarence Lyman, past President of the Class of 1937; Robert Taira, a member of the debate team which gained public notice and approval in its successful tour of the mainland last year; and Edna Tavares, prominent senior and secretary of the Hui Poolela.

Stanley Bento, dramatics star, was chosen student council representative to the Theatre Guild council. Bento has had a part in nearly every guild production since he has been in the University.

Entrusted with duties as members of the Board of Publications were Howard De Vis Norton, one of Hawaii's prize rifle-team members; Florence Ching, secretary to Pump Searle; and James Carey, Sophomore member of the Student Council.

To Ralph Matsumura and John Stone were given the two student positions on the Board of Athletic Control. Mr. Matsumura was past Secretary of the ASUH, while Mr. Stone is present Secretary of the ASUH.

In order to derive benefits from diversified opinions, the council has appointed students who have different slants on matters pertaining to the ASUH.

## UH Juniors Hold Election

**Balloting To Be Done in Front Of Campus Library**

To fill the vacancy created by the departure of Robert Jarrett to the mainland, the junior class will hold a special presidential election, the primary on October 7 and the general on October 16.

At the same time, the position of the vice-president will be filled. The position was not filled in the election last spring, due to a tie between two candidates.

Both the primary and the general will be held in front of library. All colleges will ballot in a central booth.

Candidates for the presidential post are Herbert Choy, Frederick Tan, Sau Hoy Wong and Douglas Yamamura.

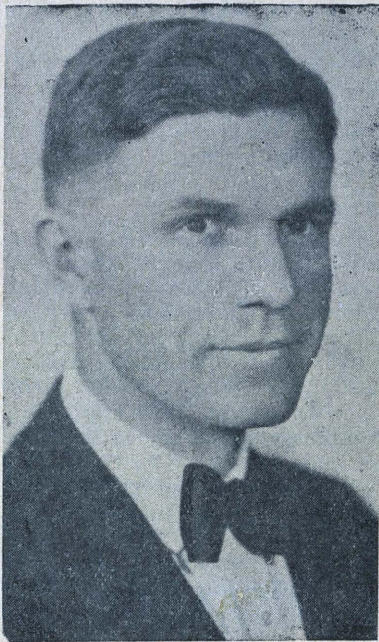
Henry Kawano and Donald Rietow, who were tied in the election last spring, will vie for the vice-presidential post.

The candidates were nominated by the junior council, headed temporarily by Lucia White, class secretary, and Abraham Akaka, treasurer. Petitions, containing more than 25 regular class members may be made by any member of the class for both positions.

## Calendar of Events

Thursday—  
9:30 a. m.  
Convocation  
Outdoor Theater  
7:30 p. m.  
Pep Rally  
Gymnasium  
Friday—  
12:00 noon  
Pep Parade  
Atherton House  
7:45 p. m.  
Football Game  
Stadium  
Saturday—  
6:45 p. m.  
Faculty Dinner and Dance  
Oahu Country Club  
8:00 p. m.  
ASUH Mixer  
Gymnasium

## Speaks Today



President David L. Crawford, who will address the faculty and students at the first convocation of the year.

## Pep Parade Is Planned

**Cars To Assemble at University Avenue at Noon**

Members of the ASUH and their friends are invited to join a gala pep parade tomorrow noon. The parade will be held to give the University team a rousing send-off against the McKinley alumni eleven that night.

Streamers may be obtained at the ASUH office in the cafeteria. All cars entered in the parade must be decorated with streamers. Stickers and banners may be used, but the ASUH will not supply them.

All cars will meet at the cafeteria by noon. The parade will start promptly. The course of the parade is not definite, but it will probably run through Beretania, Nuuanu, King, Fort, back to Beretania, Bishop, and back to King. It will most likely run through the McKinley campus, come back on King, up University avenue, and disband at the University.

The parade will disband before 1:30 p. m. so that participants will be able to attend the afternoon classes.

## SHARPSHOOTERS

For the ninth consecutive year, the University of Hawaii ROTC rifle team captured the Warrior of the Pacific trophy by registering the highest comparative score.

The local team's average was 214.73, the next highest being that made by University of Oregon, 209.09.

## Director Wyman Issues Call For Guild's Musicales Tryout

Plans for an active year in the Theatre Guild were flashed yesterday by Director Arthur E. Wyman with the announcement of the first guild effort of the semester, a musical show, "Royal Koko."

Final tryouts for the cast of Sir Arthur Sullivan's and Claude A. Stiehl's satirical farce will be held this afternoon in Farrington hall. More than 50 students will take part in the production, which will be done to music.

The scene for "Royal Koko" is laid in Honolulu and the authors are widely known here. Sir Arthur composed the music for the show and Mr. Stiehl, popular organist of Honolulu, composed the book and lyrics.

First tryouts were held at 4 p. m. yesterday and will end today at 4:30 p. m. Dancers, singers and actors are urged to attend today's tryouts. It is the first show of its kind done by the University of Hawaii.

The Theatre Guild's eighth season will be featured by many outstanding productions of the American stage.

## Girls To Add Wahine Touch To Flag Rush

**Three Events Added to Field Day Program Tomorrow; Shift Prognostications In Favor of Yearlings**

Women students will cast aside their femininity and join the men in the traditional flag rush and field day activities between the freshmen and sophomores tomorrow afternoon, October 2, at 3:30 p. m. The old Cooke Field has been chosen as the site of the titanic struggle.

For the first time in many years, the girls have been included to add their hair pulling and scratching tactics to aid the boys in upholding the colors of their respective classes. The three-legged race and the sack race for both men and women have also been added to the program. Another new feature will be the sack bucking tussle.

The freshmen have been working stealthily to overthrow the upper classmen, but the odds seem heavily against them. Kenneth Powers, temporary president, is in charge of the frosh.

The committee working on this affair includes John Stone and Ralph Matsumura, co-chairman, George Clark, Anthony Morse, Adolph Desha, Ivanhoe McGregor, Kenneth Powers and Robert L. Stevenson.

The list of events include tug of war for both men and women, horseback boxing, three-legged race for men and women, sack buck, sand bag tussle and the flag rush.

## Miss Flint Plans To Serve Lunches Worthy, Healthy

Miss Maurine Flint, new cafeteria manager, plans to serve wholesome, nourishing lunches at fair prices to the students and faculty of the University.

It is planned to serve three meals a day, except on Sunday, when only breakfast and lunch will be served. Miss Flint expects approximately 300 patrons each day. Over 250 patronized the cafeteria during the last summer session.

Miss Flint holds a B.A. degree from Utah State College, from which she graduated in 1932. She has had experience in mainland high schools.

Miss Flint replaces Miss Elizabeth Cooper, who is on a world tour.

The new manager states that a most successful year is assured if customers will cooperate at all times with the cafeteria, keeping the rules in mind.

## Freshies Face Difficulties in Keeping Dink Caps On, Taking Straight and Narrow Sidewalks

**By a Freshie**

Hey, freshie! Keep your cap on—want to polute the tank? The Frosh forgot for the moment to look nonchalant and oggled at the hard-looking upper-classmen sitting under the algaroba. As he placed the foolish looking dink cap on his head, we wondered—how did they know we were freshies, did we really look that dumb? We hoped not, and yet—maybe that lost feeling we had showed in spite of everything.

We recall the time we spent all of half an hour looking for room six in the upper floor of Hawaii hall to have that soph condescendingly inform us that it was in the basement, if you please. And did you know that there was one, freshie? And again, when we called the Dean "Mr." and someone snickered; and when we had to sit stiffly in a row with four others of our kind holding a placard to be photographed.

Occupied with his musing, we were startled by a hardboiled "Keep off the grass, freshie, if you know what's good for you," we managed a grin and a half-hearted

swagger back to the straight and narrow.

We looked about and saw everywhere about us some of his four and a half hundred counterparts who had come to get their first dose of college life. If it turned out to be a slightly bitter and ignominious dose, it was still quite a lot of fun, and we reflected—if we could lick these sophs in the flag rush—!! If not, we could "give it" to the frosh next year!

## Powers To Lead Class

**President-Elect Heads Incoming Freshmen Class**

Kenneth Powers was elected temporary president of the Freshman class Thursday evening, September 24, in the University gym. The Frosh class officers were elected at the "1940 night" dance held in the University gym on Thursday evening from eight to ten-thirty.

The other officers are: Clarence Tsui, vice-president, Muriel Swift, secretary, and Charles Pietsch, treasurer.

Election of officers followed an interesting dance program held on Wednesday evening to enable Freshmen to get acquainted.

Opposing Kenneth Powers on the presidential ticket were: Sing Chang Chun, Duke Cho Choy, William Vincent and Dorothy Kahani. Aspirants for the vice-presidency were: Natalie Bishop and John Bustard. Running for secretary were Fenwick Holmes and Wanda Lee Benoit. Those seeking the treasurer's office were Frances Kauka, Pete Okumoto, Priscilla Akana and Paul Kim.

Freshmen, and the small number of upper classmen that attended the affair were greatly entertained by the varied program of hula dancing, single and group singing, piano solos, violin with piano accompaniment, and an enacted version of Guisepppe the Barber. Dancing followed.

Stanley Bento, senior, acted as announcer, chairman and master of ceremonies. Miss Kahananui, freshman, was mistress of ceremonies.

Names of candidates winning offices were announced during an intermission in the dance. Officers named will hold office until regular class officers are elected sometime in October.

## WAKABA KAI MEETS

Members of Wakaba Kai, Japanese sorority on the campus, are requested to meet today at 12:45 noon in Gartley hall.

Margaret Monden, president, announced that matters pertinent to the club will be discussed.

## NYA Supervisor



Miss Cenie Hornung who was recently appointed supervisor of the National Youth Administration.

## Convocation Today Opens School Year

**Traditional March of Faculty, Classes To Take Place This Morning on Campus; Meeting in Gymnasium**

Approximately 1250 students will be officially welcomed to the University at the annual convocation which will be held at 9:30 o'clock today in the gymnasium.

Students wearing their class flowers and faculty members in caps and gowns will march to the gymnasium where the first assembly program of the new school year will be held. The university band will play.

The program will include short addresses by President David L. Crawford and Dr. W. N. Brigance, professor of English and chairman of the department, who succeeded Dean Arthur L. Andrews, who retired last June. Edward Hustace, ASUH president, and Lydia Chun, AWS president, will be formally presented to the student body.

Mrs. David Crawford will lead the students in singing the "Alma mater" and "Here's to Our Dear Hawaii." ROTC sponsors will pass out the programs.

Seniors are asked to assemble between Dean Hall and Hawaii Hall, girls dressed in white; juniors in front of Dean Hall; sophomores between Gartley Hall and Dean Hall; and freshmen in front of the library. The faculty will assemble in Hawaii Hall.

## Sophs Stage Pep Rally

**Song and Cheer Leaders To Tryout Tonight**

In preparation for the Dean's gridiron debut against the McKinley Alumni football team tomorrow night at the Honolulu Stadium, a monster pep rally will be staged in the gymnasium tonight, beginning at 7:30 p. m. The sophomore class with Bert N. Nishimura, vice-president, as chairman will be in charge of this affair.

A pep parade starting from the campus will be staged tomorrow noon.

Candidates for song and cheer leaders will tryout at the rally tonight. All prospective leaders are asked to be present for this tryout.

A diversified program including songs, yells, skits, and pep talks is being planned for this first rally of the year. Everyone is urged to attend.

Members assisting include Belle Lowrey, Norman Chung, Lorna Ho, Ellen Stewart, Ivanhoe McGregor, James Carey and Jack Porteus.

## Registration for Enrollment Closes Friday Afternoon

Registration at the University will officially close tomorrow afternoon. Changes in registration of classes, enrollment in new classes or in the University, and all details pertaining to registration must be done before the registrar's office closes tomorrow.

Classes for all regular classes started in earnest Monday.

The incomplete registration to the time this article went to press totaled 1257 students. Included in the figure 180 seniors, 186 juniors, 311 sophomores, 509 freshmen, 40 fifth year students for Teachers college, and 24 unclassified.

## SEMI-WEEKLY

Ka Leo will issue two papers next week, on Wednesday and Saturday.

The campus paper will resume the semi-weekly schedule, inaugurated last April.

Distribution of the paper will be made on the front lanai of Hawaii hall.



# Ka Leo o Hawaii

THE VOICE OF HAWAII

Published Twice Weekly by the Associated Students of the University of Hawaii

1935 Member 1936  
Associated Collegiate Press  
Distributor of  
Collegiate Digest

Editor-in-Chief.....Katsuto Nagaue  
Managing Editor.....Metcalf Beckley  
Associate Editors.....Bert N. Nishimura  
Neal Batchelor  
Copy Editors.....Reuben Tam  
Yoshiko Kashiwa

News Department	
Abraham Akaka	Katsuo Miho
Natalie Bishop	Edward Kim
Gunji Kawahara	Barlow Hardy
Stella Kaaua	Edward Namilimili
Caroline Lee	Robert Stafford
Alma Lai	Roger Strench
Hiroshi Watanabe	David Hyun
Toshiko Misumi	Arthur Horner
Jack Porteus	
Sports Department	
James Carey	Barnie K. Yamamoto
Lorna Ho	Walter Aoki
Paul Findeison, Jr.	
Society Department	
Carol Ross	Betty Jeffords
Evelyn Sunn	Shirley Kamioka
Kitty Phillips	Marie Buffins

Editorial Board	
Katsuto Nagaue	Metcalf Beckley
Albert Hortings	Willard Wilson

**BUSINESS STAFF**  
Business Manager.....Calvin C. McGregor  
Assistant.....Tom Imada  
Circulation.....Ralph Matsumura  
Office Manager.....Edith Cameron  
Assistant.....Ellen Steward

Entered a second-class matter at the post office of Honolulu, Hawaii, 1922, under the act of March 3, 1879.

Telephone 9951      Subscription Rate, \$1.50 a Year

## YOUR CHANCE TO SHOW YOUR CAMPUS SPIRIT

Three great opportunities will be given all members of the ASUH to get together this week for semi-social and social affairs. After all, we'll meet more friends at social functions than at any other place.

Friends and followers of the University football team will gather tonight in the gymnasium for the first pep rally of the season. The team plays McKinley alumni tomorrow night. In attending the rally, you are serving a two-fold purpose. You'll make friends for yourself and at the same time give the support and the cheering send-off that the team needs.

In attending the game at the Honolulu stadium tomorrow night, your purpose will be identical. And besides, enjoy the Deans' play for the first time this season.

The ASUH will afford a grand culmination of your week's activities by sponsoring a dance in the gymnasium Saturday night. This is a real opportunity to meet your fellow students. No outsider will be present, so it will be a home-affair.

Your opportunity has come. Show what you can and will do!

**Campus clubs and organizations are urged to pick their own press agents for Ka Leo. Each club is invited to submit for publication the report of its activities. Ka Leo favors no club, organization, or individual in its selection of stories.**

## CONGRATULATIONS ARE IN ORDER, MISS HORNUNG

We take pleasure today in congratulating Miss Cenie Hornung for her recent appointment as NYA supervisor of Hawaii.

There is left no doubt in our minds that she will succeed in her new position, as she is wholeheartedly interested in student welfare. She is fair and unprejudiced. She understands the local situation like an open book, being local-born and having taught in the schools of the Territory. As acting dean of women at the University in the absence of Dean Leonora Bilger, she did her duty well.

Miss Hornung's outstanding record definitely points in her favor. We know she is the one for the NYA position.

**Ka Leo will run a Reader's Forum beginning next week. All regular members of the ASUH and the subscribers of this paper are invited to submit their points of view for publication. All articles must be signed, but the names will be withheld from publication if requested.**

## IGNORANCE IS SURELY NO EXCUSE

Ignorance passes so little for an excuse these days that we are gradually getting wise to ourselves. We hate to be termed plain dumb. We desire to be looked down upon. We shun to be ostracized. We shudder to be ridiculed.

Indeed we do! And there is no reason why we should remain ignorant for there is always a way to educate and adapt ourselves to the ways and means of the environment that surrounds us.

The University and the ASUH are doing their best to make each one of us as well acquainted to the campus environment as we should be. Through the University catalog, the ASUH handbook and the ASUH publications, information concerning the University and its affiliated clubs, organizations

## ★ Politics ★

By Calvin C. McGregor

With the regular shouting and lung-bursting display of oratory already fading into the proverbial echo, the major political parties of Hawaii will turn toward this Saturday's primary election with keen enthusiasm which has always marked the colorful party campaigns in the past. More than 40,000 of Honolulu's voting population are expected to throng the polls this Saturday when one of the most eventful happenings in Hawaii gets underway.

**Keen competition is expected in every post. In some offices, the Republicans look like sure victors while the Bourbons display unprecedented strength in others.**

The major attention is centered upon the delegateship race. Samuel Wilder King, present office-holder, looks good enough to return to Washington. King has made an enviable record at the nation's capitol and should be even better at the next session. His democratic rival, Bert-ram G. Rivenburgh, will hardly offer him a good battle for this post.

The senate race present an interesting picture of party headlines vying for the coveted seats. The GOP has placed Eugene H. Beebe, George H. Denison and Francis Brown while David K. Trask and William (Weely) Crozier offer good competition from the democratic and non-partisan parties respectively.

**The House of Representatives has numerous candidates, many of whom have been connected with the University.**

Among the more prominent are Adna G. Clarke, professor of police administration at present and one who has taken a keen interest in civic affairs; Walter K. MacFarlane, republican choice, who looks like a good bet to retain his seat; George M. Eguchi, GOP candidate, who barely missed in the last election; Mark Y. Murakami, democratic candidate, and Kan Tai Lee, prominent University graduate who did big things while attending the Manoa school.

In the municipal and county election we find a host of capable candidates who will make the race very interesting. Fred Wright and Manuel C. Pacheco, representing the republican and democratic parties respectively, will furnish the show in the race for the mayor post. Pacheco has enjoyed an unusually large following in his office as supervisor but the general opinion is that he will lose a considerable amount of that support in his new endeavor. Wright stands on his record and stands a good chance of being returned safely although there is more than an outside chance for Pacheco to upset him in the general.

David "Poupou" Conkling, republican, will undoubtedly be returned as treasurer while Edwin P. Murray should overwhelm his republican rival in the auditor's race.

Ernest Heen should win handily from Raymond C. Brown, republican, for the clerk post while Duke Kahanamoku should serve another term as sheriff of Honolulu.

Good timber are vying for the supervisor posts. Among those who should finish close to the top are John M. Asing, Charles S. Crane, Sylvester P. Correa, David Y. Akana, Leonard K. Fong, Jimmy Gilliland and Maltbie L. Holt for the republicans, while Lester Petrie, Charles D. Rosecrans and Joseph Esposito are strong for the democrats.

and individuals are imparted, expressly for our benefit.

We see no reason why we should ask lots of questions about the University and its affiliated associations and individuals when the information is at your disposal, ready to be read. We do not, however, discourage the asking of information. It is our privilege to ask whomever wish to answer us. But let us save the time and trouble of our neighbor by getting as much information as possible through the facilities offered us.

Let us read the handbook for the setup of the ASUH and the constitution. Each one of us should acquaint himself with the revised ASUH constitution, ratified last May. We do not expect to remember all details. But let us keep the handbook in a place where we can readily reach it.

For information concerning the University administration and the faculty staff, let us consult the University bulletin or catalog. Contained in the valuable book is all the information we would like to procure.

**The ASUH invites all its bonafide members to attend the Mixer this Saturday evening at the University gymnasium. Each one is requested to present his or her ASUH due book at the door.**

## HERE'S A WARM HANDCLASP TO YOU AND YOU

Ka Leo today joins with the University and ASUH administrations and all campus organizations and individuals to welcome you, freshmen and all new students, to this campus.

This campus is your community for the next four or less years. Struggle with your fellow citizens of this community and you'll share the fruit in the end.

You'll have a fresh start, handicapped by no major obstacle. Run your race fairly. Give what you have to offer. And the reward will automatically come to you.

You are now one of us, some 1200 regular members of the ASUH. You, as a member of this organization, are expected to do your duty in all endeavors and enterprises of the ASUH. Don't fail us!

## Dean Bilger Speaks To New Coeds

**Dean of Women Outlines Three Important Phases of Campus Life to Freshmen Coeds Concerning Studies, Socials**

Greeting the Freshman women with a smile, Dean Bilger addressed the recently enrolled coeds Thursday afternoon at 1:30 in Gartley Hall. Speaking on "Life on the Campus as Women Students," she placed before them certain restrictions and privileges which are the duty of each to abide by as students of the University of Hawaii. The organization and regulation of campus rules, she explained, arise from experience—circumstances which are created by the students.

She explained that the three divisions into which campus life is divided are—the academic life, life of activities, and home life. In order to enjoy four years of a successful college career, these three important divisions should be included in a plan allowing sufficient time for each phase.

Concerning activities, there are from 57 to 60 organizations on the campus. Among them the most important are the A.S.U.H. and the A.W.S.

There are, of course, both professional and social organizations to which one may belong. The main disadvantage of joining a well-established social group lies in the fact that events are planned, friends are made for four years, therefore making the members too dependent later upon the social group.

The regulations apply to all students and must be carried out implicitly.

**1—A calendar of events is published in the office of the dean of women on which all events pertaining to the use of the name of the University of Hawaii must be placed and approved before being publicized.**

**2—Bulletin boards are very important and should be referred to daily inasmuch as they consist of the most recent information and are there for the benefit of the student.**

**3—In the student union building (cafeteria) are the student mail boxes in which are placed campus notices which must be responded to readily.**

The attainment of new knowledge is the primary purpose of a university career. Two-thirds of studying is completed if the student sits intelligently in the class room, taking notes at lectures and doing the assignments.

Dean Bilger concluded her address with a series of challenges to the new women students. She concluded by a strong phrase, "Be in command of yourself" during the four years on the campus.

The program committee of the ASUH mixer is headed by Edean Ross, chairman. Her assistants are Bette Ann Worthington, James Clarke, Sarah Horswill and Cornelia Kamakau.

Kunikiyo Florist

1111 Fort Street

Phone 3135

**Leonard 'Red' Hawk**

Popular Piano Playing  
Individual Instruction—  
No Classes  
Dance Band

Room 6, Robinson Building  
Above Bon Ton

Drawing Sets  
T. Squares  
Level Banks  
Triangles  
Art Supplies  
Stationery

at

**PATTEN'S**

## Manoa Mud

The newest heart-throb of the Frosh class . . . He hails from St. Louis, Mo. . . and he is studying to be an aviator at Randolph Field . . . He is all set to bowl the girls over . . . WARNING FOR THE UPPERCLASSMEN . . . WATCH YOUR DATES AS BILL CLARKE IS DANGEROUS AS FAR AS THE GIRLS ARE CONCERNED.

We are wondering if the Stanford-Geiser combination is still going strong . . . appearances seem to point that way . . . Believe it or not but there is still brotherly love on the campus . . . evidently the Everly brothers are not capable of taking care of themselves . . . especially Bill . . . Tsk! Tsk! Such going's on.

The Frosh women don't believe in listening to lectures from their Professors . . . they would rather indulge in notes about "Isn't he darling" or other such high school stuff . . . ISN'T THAT RIGHT EDITH M. AND JESSAMINE? . . . We are all wondering why Beardmore didn't go to Mills as she expected to . . . We heard that the boat was too crowded??? . . . The famous Maui and Punahou BOMB-SHELL is gaining notoriety even in the University . . . She has again broken into print . . . as are Ruth Murphy and Barbara Taylor.

**"GOD'S GIFT TO WOMEN"** NELSON seems to be getting in on an early start as he is already chasing the Frosh women . . . A little birdie told us that Wanda Lee Benoit wouldn't be satisfied until she made the scandal's first edition . . . we are always willing to please . . . We heard that some of the Frosh women didn't think the dances were long enough . . . YOU CAN'T DO MUCH IN TWO AND A HALF HOURS . . . consequently the dance suffered without their presence . . . ISN'T THAT RIGHT, ADELAIDE M.?

What's this about Alec Nelson standing the Frosh women in line so he can take his pick . . . Give the Frosh credit for some brains, please . . . Did anyone hear Norton offering his left arm to Wanda Lee Benoit? . . . Wanda wanted his right arm but he explained that it was already taken . . . Zioncheck Dyson is greatly puzzled as to why Lorna Hover always asks who is speaking before she enters into conversation over the phone.

We learnt that Betty Steele just has to have her air in the evening . . . she usually starts walking down Manoa hill but always ends up at the Ratskellar or Lau Yee Chai with some stray . . . Harry Eby has had a change of heart . . . He prefers the youngest Ross girl, Leona to Doris . . . Jack Porteus and fran Aitken were seen Friday helping all the distressed Frosh women . . . Always trying to be the Galahad of the bunch . . . Arthur Campbell seems to be making quite a hit with the ladies . . . he's keeping up with his Hilo rep.

## THE LIBERTY HOUSE YOUNGER SET

### Fashions for Collegians

• Our Younger Set Shop specializes in youthful styles . . . fresh and smart for classroom or campus.



• Featuring Louise Mulligan dresses . . . everyone perky, different, adorable. Styles for school, for dinner, for formal occasions . . . for Fashion-wise Co-eds!

Younger Set Shop, Second Floor

## Addition to UH Faculty Announced

**Three Visiting Professors Are Listed on Staff; Webster, Livesay Begin New Duties; Twelve Instructors Added**

Three visiting professors, six new administrative staff members and 12 instructors, a total of 21 newcomers, have been added to the university faculty this year. Dean Ernest C. Webster and Dr. Thayne M. Livesay will serve as Deans of the College of Applied Science, and Teachers College, respectively, in the absence of Dean Arthur R. Keller and Dean Benjamin O. Wist.

The list of new faculty members includes Dr. W. N. Brigance, professor of English and chairman of the department, who succeeds Dean Arthur L. Andrews; Dr. Lee Byrne, visiting professor of education during the absence of Dean Benjamin O. Wist, who is at the Yale University; Carl Meyer, assistant professor of engineering at Wooster Polytechnic Institute, here as exchange with Russell C. Brinker, university instructor; and Dr. W. T. Chan of Lingnan university, who is visiting professor in the Oriental Institute.

Dr. Charles Moore, formerly of the Yale faculty, will be assistant professor of philosophy, replacing Dr. Thomas R. Kelly, who resigned to take a position in Haverford College. Shunzo Sakamaki, who came from Japan for the summer session, will remain during the year as instructor in Japanese.

Theodore Morgon comes as instructor in English, Dr. Bruce White will be assistant professor of education, and Ruth C. Herter will be acting instructor in bacteriology, replacing Dr. O. N. Allen, who is studying in England.

For **SUPERIOR** photo work  
**DEVELOPING  
PRINTING  
ENLARGING**

Bring your films to **Maurice Lemmel, Atherton House.**

10% off downtown prices to U. H. Students

## Free Parking

for FOOTBALL FANS  
with every purchase of

6 Gals. of Gas

**OAHU ICE SERVICE No. 2**  
Junction of Beretania & King



Hawn.  
f  
LH1  
L4  
v15

# ASUH Mixer On Saturday

## Big Social Event Comes This Week End on UH Campus

Initiating collegiate social life for the current university year, more than a thousand students are expected to attend the annual ASUH mixer scheduled for the Gymnasium this Saturday evening at 8. Gay dance tunes will be furnished by the original Dragons' orchestra while lively intermission numbers are being staged by talented campus artists.

This social affair has always been a colorful and eventful happening in the life of the frosh students. Getting acquainted with their fellow students and meeting faculty members in an informal mood have been set aside as the primary purpose for this gathering. Those in charge of the dance are trying to make a greater attempt in carrying out this theme than has been in the past.

No outsider will be allowed to attend this social function. All ASUH members must present their coupon book at the door.

## Phi Epsilon Begins Rushing Season With Tea Saturday

Candles and yellow flowers will carry out the sorority colors when Phi Epsilon Mu entertains with its first rush party Saturday. "By candlelight" will be held from 5 to 7 o'clock at the home of Miss Edith Cameron on McKinley Street. Hostesses are Florence Wilder, president; Alice Laubach, secretary; Jean Forbes, treasurer; Mary Amy Bechert, Eleanor Hocker, Kitty Phillips, Peggy James, Minty Leithead, Reaka Franson and Jane Iseman.

## YM, YW Welcome Freshmen Class Members at Tea

To welcome the Freshman Class, the joint Y.M. and Y.W.C.A. gave a tea party on Wednesday afternoon at Atherton House.

The informal gathering commenced at 4:00 p. m. with music and dancing. Refreshments proved to be very popular with the incoming class.

The Y.M.C.A. Quartet, composed of A. Akaka, M. Maeda, A. Luis, and S. Ogawa, opened the program with two selections; A. Toast and Let Me Call You Sweetheart. They were accompanied on the piano by Kirby Todd.

Mr. Akaka sang Smiling Through and All the World is Waiting for the Sunrise. He was accompanied on the piano by Mr. Todd.

Mr. Carl V. Herron, manager of Atherton House told several hilarious Negro stories.

How Can I Leave Thee, rendered by the Quartet concluded the afternoons program.

The alert Freshman Class of over 400 enthusiastically enjoyed the delightful entertainment provided for them.

## Ka Pueo Entertains Rushees with Picnic At Punaluu Home

Ka Pueo will open its rushing season with a picnic at Dr. Dean's Punaluu home on Sunday, October 4th. Swimming and lunch will be enjoyed from ten to four. Ka Pueo members are Molly Webster, president, Lindsay Neal, vice-president, Jean Catton, secretary, Lorraine Williams, treasurer, Jane Loomis, Betty Jeffords, and Beverly Koch.

## ASUH Welcomes Freshmen Members

As a cordial gesture of welcome to all incoming freshmen members, ASUH sponsored a program of entertainment and dancing last Wednesday evening in the campus gym.

The two and one half hours program was opened with a speech by Edward Hustace, ASUH president, who welcomed the freshmen and urged them to take an active part in campus activities.

Abraham Akaka and Stanley Bento were responsible for the arrangement of the program.

## Gamma Chi to Fete Freshmen Girls at Tea Monday at 4

A number of freshman girls will be the guests of Gamma Chi Sigma Monday, October 5, at a tea from 4 to 6 o'clock at the Manoa home of Betsy Barnes. Green and yellow, the sorority colors, will be used in the decorations. Receiving are Phyllis Van Orden, President, Orme Johnson, vice-president, Peggy Poole, treasurer, Joan de-Vis Norton, secretary, Barbara Borden, Betsy Barnes, and Peggy Kanger.

## Future Farmers To Hold Outing At Waimanalo

Plans for the first semester activities of the Future Farmer chapter of the University will be drawn at its meeting of the directors at the Aggie building October 5 at 12:30 noon.

At the meeting detailed plans will be made for the initiation party to be held October 10 at Waimanalo beach.

Tickets for the organization's benefit dance on November 21 will be distributed at the gathering. Johnny Lau and his orchestra will furnish the music for this social. Other preliminary plans will be also formulated.

Committees in charge of the Waimanalo outing are: initiation, Satomi Maneki, chairman, Mahn Kuen Lee, Sau Hoy Wong, Bernard Ting; transportation, Richard Sumida, chairman, Ah Tong Wong, Kazuo Maeda, Kenneth Quon.

## 1940 Dinner Held

A large group of dink bedecked freshmen gathered at the dinner on the campus at 6 p. m. last Thursday.

The dinner preceded a program of dancing and entertainment in the gym.

## WILLIAMS' PHOTO STUDIO

Keep pictorial memories of your college days. . . . Why take a chance? Have your portraits made by an expert.

Studio: 1057 Fort Street

Phone 4309

## BANK OF HAWAII

KING AT BISHOP

## Commercial and Savings

Over 85,000 Depositors

## Start Your Savings Account TODAY

## VOTE FOR

**ADNA G. CLARKE**  
(Adena Kalaka)

for

**REPRESENTATIVE**  
4th District  
**REPUBLICAN**

## Vote For—E Koho Ia

**GEORGE M. EGUCHI**  
(KEOKI)

for

**Representative**  
Fifth District

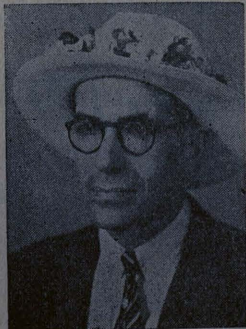
Moho Lunamakaaiana  
Lepupalika Apapa Elima



## Ask Questions!

They are a sign of a desire to learn, not of ignorance. Ask us to-day about your insurance needs.

**Alexander & Baldwin, Ltd.**



Give the Cowboy your support at the Primary!

**"COWBOY" MORANHA**  
(M. P. MORANHA)

**Republican Candidate for SUPERVISOR**

**MORANHA, M. P. | X**

**36 years**

**the Republican Party has worked for Hawaii's progress**

IN EVERY worthwhile thing for improvement of Hawaii's economic, social and political life the Republican Party has played a practical, constructive part.

The Party stands today, as it always has stood, for CONSTRUCTIVE work for the benefit of ALL people in Hawaii. It stands for HARMONY—not discord. It believes that friendship and unity and team-play make winning power. And it believes such power should be used at Washington, D. C., in the Territorial Legislature and on every Island for the greatest good of each and every citizen and taxpayer of Hawaii.

Time has proved that Republican principles of government have brought the people of this Territory their greatest prosperity. We know this is appreciated by every thinking citizen. We have every confidence that the voters of Hawaii will stand by their guns in the defense of the well-being of her hundreds of thousands of citizens in the coming elections.

A solid Republican front means victory! . . . And continued prosperity and welfare for ALL citizens.

Don't split your vote in the Primary, for by so doing you endanger the success of the very candidates you want to elect. We urge that you play safe—

**VOTE STRAIGHT REPUBLICAN**

at the PRIMARY, SATURDAY, OCT. 3



REPUBLICAN TERRITORIAL CENTRAL COMMITTEE

01484 DEC 17 1936



# Deans Battle Mickalums Tomorrow Night

## Coach Klum Has Strong Aggregation

### Lack of Weight May Be Made Up By Speed, Deception To Outguess Coach Buster McGuire's Blackangolds

Coach Otto Klum will send a speedy and deceptive team against the Mickalums when the two outfits make their debut in the second senior league game Friday evening under the klieg lights of the Honolulu stadium.

Although the Hawaii boys are comparatively light, they pack speed and this, coupled with the baffling plays, should be enough to outguess the Micks.

While the Rainbows have been working hard daily from early in the afternoon until dark, the Mickalums have not been wasting any time. Although they are late in getting started with drill in the evening the alumni group works hard until they can't see the ball any longer.

Although the Mickalums have no outstanding stars such as other teams in the senior league, Coach Buster McGuire reports that he is very well pleased with the performance of his cohorts in practice.

"They have the spirit that makes a ball club," says Coach McGuire. He expects his eleven to show teamwork.

The University will be entering the first game without the services of Tommy Kaulukukui, star halfback who last season received an honorable All-American mention for his services, due to the fact that he injured his ankle while making a slide in a baseball game

### OUTSIDERS MUST PAY FOR USAGE OF COURTS

Nominal charge will be instituted for the usage of the University tennis courts beginning next week.

All ASUH members and all those who have athletic coupon book may use the courts on the condition that they present the book to the caretaker each time they wish to play.

All outsiders must pay a 15-cent fee per person for each singles game and a 10-cent doubles games. Tickets may be purchased from Theodore Searle at his office.

The courts will be open from one to six o'clock during the week days, including Saturday. On Sundays, the courts will be open from 6 a. m. to 6 p. m.

over a month ago. The speedy little player will not be able to play for several games.

While Kaulukukui is out of the lineup the team has a new backfield man who should show plenty this season. He is a freshman, David Lum, a former interscholastic league star who played for St. Louis. Lum is speedy and has gained weight over his high school days.

Hawaii will again have a formidable passing attack. Ernest Dias, a former Kamehameha star, who last year played for the California Aggies, is now enrolled at the University. He is an exceptionally fine pass-tosser.

A tentative starting lineup for the backfield Friday night will see Anthony Morse, co-captain, barking the signals, with George Aki and Ernest Dias in the halfback posts and Vernon Akee as fullback.

The line will undoubtedly have Mike Gonsalves and Alfred Espinda at ends, George Clark, co-captain, and Russell Quaintance, tackles; Robert Stevenson and Joseph Lee, guards; while either James Carey or Francis Apolina will answer the whistle in the center position.

## Volleyball Play To Start Campus League Battles

The intramural volleyball league will open its season on October 16 with seniors as defending champions. In the women's league the juniors will defend the title.

Every class will be represented by three teams according to height instead of weight. The class A team will be composed of players over five feet seven inches; class B team from five feet four to seven; and Class C team any height below five feet four inches.

Following volleyball play the soccer ball league will open while the Varsity football squad is away on the Mainland invasion, so that the field will be open to soccerites.

The points scored in every intramural sport will be added to point system. The class scoring the highest points in all sports by the end of the year will be declared as champions.

## Women's Entries For Tournament To Close Today

Entries for the Hawaiian women's open tennis championship must be in by 4 o'clock today to May Gay, women's physical director at the University.

The ASUH is sponsoring the tournament this year. The playing will begin 8 o'clock Saturday morning at the University courts.

Mary Greason, 1936 women's singles champion, will defend her title against a crop of promising players.

Both singles and doubles are included in this tournament.

### DEANS MEET TOWNIES

Deans will meet Townies next Friday in the second game of the Senior League sked.

## Coach Greet Eleven Lettermen On Varsity Football Contingent

With eleven lettermen returning from last year's squad to serve as the nucleus, Coaches Proc Klum and his assistants, Luke Gill, Pump Searle and Mitsuo Fujishige are attempting to produce a crack eleven which they hope will be ready to trounce the Mickalums Friday night.

Despite the fact that graduation took a heavy toll of the veterans indications of a bright year looms.

Still Coach Klum has cause for his gloomy appearances. It has been only a few days since George Clark, co-captain, recovered from his back injury. Gus Ahuna's ankle injury is the chief cause of University's lamentation. Since Ahuna is definitely out of commission Klum has made certain changes. Center Joe Lee, letterman from the '35 squad who ably understudied Sully Kusunoki has been made a guard partnered with Sam Kaapuni. If Lee plays as he is doing at practice then the readers can rest assured that at least one guard position is well taken care of. The other is a question mark. Kaapuni will probably have to fight like a raging bull if he expects to hold a regular berth. With Clark shifted to handle one of the tackle posts and burly Russell Quaintance holding down the other post power and weight do not seem lacking.

Maikai Gonsalves, a regular of three seasons and Al Espinda have the end positions well occupied. Roy Ahrens, another veteran, is giving them a run for their money.

In the backfield, there are only three veterans. With Buster Piltz gone Klum has shifted Morse to quarter. George Aki is again out at full. Tommy Kaulukukui will fill his old place at left half as soon as his ankle which he injured in a baseball game, will permit him to play.

Attempting to push these lettermen out of their regular berths are quite a number of last years

holdovers and new candidates. Among the new crop of boys trying out for the team are quite a few who bear watching. David Lum, who hails from St. Louis college, and Gordon McKenzie, from last year's squad are hot numbers for left half. Vernon Aki from McKinley high school is pretty sure to get in a few minutes as blocking half on tomorrow night. Smith, a burly 190-pounder tackle is another yearling who shows indications of making the grade.

Others out for the squad are Joseph de Silva, Cal MacGregor, Ivanhoe McGregor, Kayo Chung, Alexander Nelson, Bull Haines, Alexander Smith, Lewis Hurwitz, Eby, Herbert Dunn, Susumu Tanaka, Ben Eleniki, Ernest Dias, James Carey, Francis Apolina, Francis Kauka and a few others.

## Varsity Swimming Team Prospect Is Bright This Year

Considered one of the strongest teams ever to represent the University, the 1936 swimming squad will be captained by Swede Desha. Six lettermen, besides Desha will be returning.

A great interest is shown by students in swimming this year. The outlook of prospective freshmen candidates look bright. Coach Searle is jubilant over the candidates and bore a big smile as he watched the water splashes, taking test in rather surprisingly fast time.

The seven returning lettermen are captain Adolph Desha, G. Greenwell, A. Millikin, Ben Chollar, Gus Clemens, R. Hughes and Jack Wakayama. Richard Sumida will be manager. Peggy James, Orme Johnson and Joan deVis-Norton are the veteran mermaids.

## Klum Back From Trip

### Dean Coach Expresses Enjoyment in Solitary Outing

On a six-month sabattical leave of absence, Football Coach Otto (Proc) Klum spent his time in the pursuit of his leisurely fishing and camping adventures along the Pacific northwest coast of the continent.

In native Oregon Klum found a much needed solace during the long vacation leave to secrete himself away from the hustle and bustle of daily routine and cavort in pure recreational fashion among various mountain vacation resorts. There he camped, fished and enjoyed to the fullest extent a much needed rest.

Klum, however, found it impossible, notwithstanding his good intentions of seclusion, to effect a complete retreat from football doings along the Pacific coast. Keen observer that he is, Proc spent much time looking in at gridiron prospects at such institutions as Washington, USC, California and UCLA.

While his attention was diverted, in the main, to both the Washington Huskies and the UCLA Bruins, Klum, nevertheless, expressed a personal belief that Coach Howard Harding Jones' USC Trojans were his favorites to walk off with the championship of the Pacific Coast conference this year.

As for both the Huskies and the Bruins, both of whom are billed to show in Honolulu against the UH Rainbows, Klum found only more to worry about. In some quarters, the Huskies are prime favorites to capture the Pacific coast title. As for the Bruins, reports have it that a better team than that which defeated the Deans in Los Angeles last year has been shaped by Coach Bill Spaulding.

## Four Stores of Quality

Medicine for Cuts,  
Burns and Sores  
Good  
Fountain Service

### Blackshear's Drug Stores

King and Pilko  
Beretania and Kalakaua  
Capitol Market  
Liliuokalani and Kalakaua

## A. G. Spalding & Bros.

Athletic Goods for  
All Sports

Complete line of  
Football Goods  
just received

### E. O. Hall & Son

King at Fort Sts.

## Honolulu Sporting Goods

Company, Limited

Featuring

Equipment for All Sports

Baseball  
Basketball  
Tennis  
Golf  
Archery  
Bathing Suits



There's a right way to carve a chicken or slice a ham.  
And there's a right way to cut tobacco.

When the tobacco in your cigarette is cut the way  
it is in Chesterfield ... right width and right length  
... it burns even and smooth ... it smokes better.