

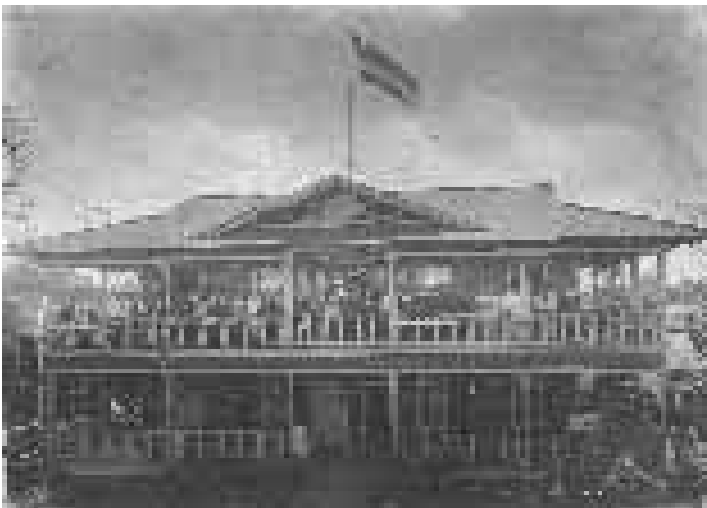
# Kong Chow Benevolent Association (Kwong-Chau Society)

岡州會館

P.O. Box 27082, Honolulu, HI 96827; president: Donna Nip Chang,

806 Pohukaina Street, Honolulu, HI 96813; Res. Ph. 537-4015

**Mission:** The Association was originally formed to assist all Chinese who emigrated from Sun Wui (*Xinhui* 新會). Today, members perpetuate their Chinese identity through fellowship and cultural activities in the community.



**History:** Members of the Society originated from Sun Wui, one of the four sub-districts of See Yup District (*Siyi* 四邑) of Guangdong, China. Kong (*gang* 岡) means “mountain ridge” and Chow (*zhou* 州) means “prefecture.” The Honolulu chapter of the Association was organized for the workers from Sun Wui district and founded in 1906 by Chung Ung and Lum Wai as a benevolent organization. Chung Ung was subsequently president for 18 years. The Association was chartered in 1919 and granted tax exempt status in 1996.

The original headquarters were located on Beretania Street, near River Street. In 1922, a new clubhouse was established on Webb Lane, at the rear of the See Yup Society Building near the Palama Junction. Subsequently, due to 1961’s Urban Renewal Project in Honolulu, the Society moved to moved to various locations before settling again into the See Yup Society Building, now on the corner of Maunakea and Pauahi Streets, in Honolulu’s Chinatown district.. After a short stay there, the Society moved to the corner of Smith and King Streets, and stayed there till 1994. The Society is now looking for a permanent clubhouse.

The main headquarters of the Kwong Chau Society is in San Francisco and is said to be the oldest Chinese society in the United States. A national convention of all Kong Chow Benevolent Associations is held every three years and rotates among San Francisco, Philadelphia, New York City, Los Angeles and Honolulu.



**Activities** Underlying all of the Association's activities is the belief in education and in promoting a society committed to integrity, diversity and service. An annual scholarship was recently established to support an outstanding high school student to attend an accredited university. Selection of the recipient is based on scholastic achievement, service to the community and financial need. The Society holds a spring banquet around the time of the Chinese New Year, spring as well as autumn memorial services for the deceased, regular luncheon meetings, and other occasional holiday celebrations. Through these gatherings, the Society still strives to support the original goals of the organization.

### **Association presidents**

1906-22	Chung Ung*
1923-24	Jay Chock Tong*
1925-28	Chung Ung*
1929-37	Chock Choi*
1938-39	Tam Hock Chi*
1940-43	Chun Wung Gun*
1944-46	Lum Kee Chung*
1947	Yee Lung Chew*
1948-50	Chung Wai Sun*
1951-54	Lum Quon Cho*
1955	Alfred C. S. Lum*
1956-57	Leong Nam*
1958-62	Arthur Wo Lum*
1963-64	Samuel Taam*
1965	Sui Fahn*
1966-68	Wong Chong Chew*
1969-70	Hung Sum Nip*
1971-72	Lum Wing Kit*
1973-74	Raymond Wong
1975	Raymond Tan*
1976-77	Wong Buck Jong*
1978-79	Richard K. W. Lee
1980-81	Thomas Y. T. Chung
1982-86	Rose Lum*
1987	Fred Lam*
1988-91	Wilfred Lam
1992-93	Yuk Guy Yee
1994-96	Henry C. H. Chu
1997	Kay Foo Lui
1998-00	Donna N. Chang
2001-02	Yew Fong Lum
2003	Willard H. W. Nip

**Membership:** Descendants of emigrants from Sun Wui are eligible for membership. There is a nominal annual due for those 18 and over, or for a family with children under 18. The fee helps to keep membership records current. The Association is currently focusing on increasing its membership, especially among the younger generation.

