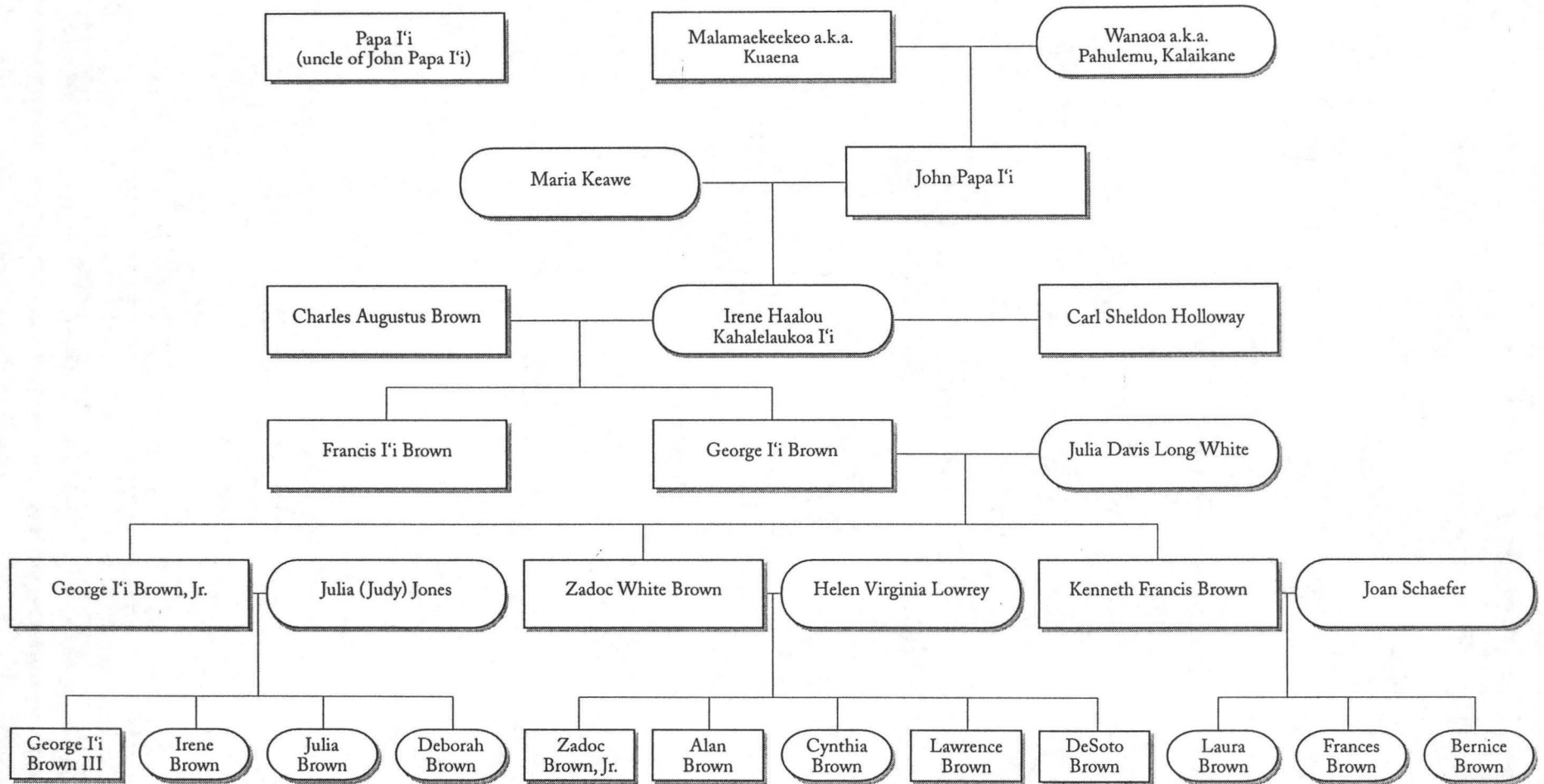


# I'i/Brown Family Tree



## GLOSSARY

The following words and phrases are non-English terms. Non-English is here defined as any lexical item not found in *Webster's Ninth New Collegiate Dictionary* (Springfield, Mass.: Merriam Webster Inc., 1986). An exception has been made for all Hawaiian words.

The language family of each word or phrase is indicated by a letter or letters in parentheses:

- (H) Hawaiian
- (J) Japanese
- (M) Maori

References for the definitions used in this glossary include: Koh Masuda, ed., *Kenkyūsha's New Japanese-English Dictionary*, 4th ed. (Tokyo: Kenkyūsha, Ltd., 1974); Hori M. Ngata, "The H.M. Ngata English-Maori Dictionary online," n.d., <<http://www.learningmedia.co.nz/nz/nd/ndindex.htm>>, (March 24, 1999); and Mary Pukui and Samuel Elbert, *Hawaiian Dictionary*, rev. and exp. ed. (Honolulu: University of Hawai'i Press, 1986).

The following definitions apply to the lexical items as they appear in the context of the transcript.

*ahupua'a* (H) land division usually extending  
from the uplands to the sea

*ali'i* (H) chief, chiefess, monarch

*aloha* (H) love, affection, compassion, mercy

*'anae* (H) full-sized mullet

*furo* (J) bath, public bath

*Haole* (H) Caucasian

*hanawai* (H) irrigation; to irrigate

*hapa* (H) part; person of mixed blood

*hapa-Haole* (H) a Hawaiian type of song with  
English and perhaps a few Hawaiian  
words

*hau* (H) a lowland tree

*hō hana* (H) fieldwork with hoe

*holokū* (H) a loose, seamed dress

*hula* (H) Hawaiian dance

*imu* (H) underground oven

*kama'āina* (H) one born in a place; (HCE)  
Caucasian who is a longtime Hawai'i  
resident\*

*kanaka* (H) Hawaiian

*kanji* (J) Chinese characters used in Japanese  
writing

*kapu* (H) taboo, prohibited, sacred

*kiawe* (H) Algaroba tree

*koa* (H) large, native forest tree

*kōkua* (H) help, assistance

*kūpuna* (H) plural of *kupuna*, grandparent,  
ancestor, relative or close friend of the  
grandparent's generation

*lānai* (H) porch, veranda, balcony

*lau hala* (H) pandanus leaf

*lei* (H) garland, necklace of flowers

*limu* (H) seaweed

*lū'au* (H) Hawaiian feast, named for the taro  
tops always served at one

*luna* (H) foreman, overseer, supervisor

*mākāhā* (H) sluice gate, as of a fish pond

*makai* (H) toward the sea

*mana* (H) supernatural or divine power

*marae* (M) courtyard

*mauka* (H) toward the upland or mountain

*Pākē* (H) Chinese

*paniolo* (H) cowboy

*pau* (H) finished, ended, through

*poi* (H) pounded and thinned cooked taro

*pua* (H) flower, blossom

*pūne'e* (H) movable couch

-san (J) Mr., Mrs., Ms.

## INDEX

- Bacon, Patience, 58  
 Beamer, Mahi, 57  
 Bishop Museum, 58, 83. *See also* Brown, DeSoto  
 Brown, Alan, 60, 61, 89, 95, 97, 113, 143, 147  
 Brown, Charles Augustus, 18, 27–28, 57, 81, 142  
 Brown, Cynthia. *See* Quisenberry, Cynthia Brown  
 Brown, David. *See* Brown, DeSoto  
 Brown, Deborah, 95, 116, 122, 127  
**Brown, DeSoto (interview), 56–84**  
     19, 89, 95  
     as author, 79–80  
     background: childhood, 56–68, 75; schooling, 60, 66–67, 72–73  
     as Bishop Museum archivist, 58, 80  
     as disc jockey, 77–79  
     family, 56–58, 60–64, 71–72, 74, 80–83  
     on twentieth century pop culture, 74–76  
 Brown, Francis I'i, 6–7, 18, 95, 96, 125, 142, 162  
     as *ali'i*, 7, 29  
     death, 29–30  
     as golfer, 7, 28  
     and music, 48  
     as politician, 12, 19, 100  
 Brown, George I'i, 2, 3, 5, 9, 18, 48, 57, 58, 93, 113, 137–38  
 Brown, George I'i, Jr., 12, 22, 57, 93–96, 112, 132, 150–51, 161  
**Brown, George I'i, III (interview), 136–62**  
     67, 95, 113, 115, 118, 122  
     background: childhood, 136–41, 145–47; early interests, 146, 149–50; early jobs, 150, 151; schooling, 143–45, 147–49  
     on boarding schools, 159–60  
     career, 150–51; at Amfac, 155–56; business ventures, 158–59  
     family, 136–38  
     as Hawaiian, 160–62  
     as other jobs, 150–53  
     on Waipi'o family residence. *See* Waipi'o  
 Brown, George I'i, IV, 157  
 Brown, Helen Virginia Lowrey, 56–57, 89, 96–97  
**Brown, Irene (interview), 112–32**  
     95  
     background: childhood, 112–18, 120, 131; schooling, 118–20, 121–22, 123–28  
     career, 124, 127–28  
     family, 112–15  
 Brown, Joan Schaefer, 6  
 Brown, Julia (daughter of George I'i Brown, Jr.), 95  
 Brown, Julia Davis Long White, 2, 3, 5, 21, 25, 26, 58, 68–71, 93–94, 113–15, 137–38, 154  
 Brown, Julia "Judy" Jones, 112, 120, 122, 137, 147  
**Brown, Kenneth Francis (interview), 2–52**  
     57–58, 113, 124  
     as architect, 19–20, 23  
     background: aspirations, 19; childhood, 2–10; schooling, 6, 10–11, 13–17  
     as businessman, 41–43, 51  
     on Darwinian psychology, 47  
     family, 2–9, 13–14  
     on golf, 28–29  
     as Hawaiian, 45–47  
     on Maori, 45–46  
     politics: as Democrat, 76–77, 101; as governor's aide, 33–35; as lieutenant governor candidate, 31–33, 76; as state senator, 35–41  
     on preparatory school ethos, 15–16  
     as Queen's Hospital board member. *See* Queen's Medical Center  
     relationship with Burns, John A. *See* Burns, John A.  
     on Roosevelt, Franklin Delano, 20–21  
     on tourism, 48–49  
     on upper-class lifestyle, 7, 17  
     on World War II, 22–23  
 Brown, Lawrence, 60, 61, 89, 95  
 Brown, Zadoc White, 21, 56, 89, 113. *See also* interviews with Brown, DeSoto, and Brown, Zadoc White, Jr.  
     as politician, 100  
**Brown, Zadoc White, Jr. (interview), 88–107**  
     60, 61, 113, 143, 147  
     background: childhood, 88, 91–92, 94–95;

schooling, 89–90, 92–93, 101  
 career, 102–104  
 family, 89, 92, 95–96, 97–98  
 recreational activities, 95–96  
 Burns, John A., 27, 28, 30–35, 76, 100  
 Campbell Estate, 28  
 Carter, A. Hartwell, 113  
 Carter, Rebecca White, 113  
 Clay, Horace, 131  
 Cooke, Montie, 147  
 Davis, Charles K.L., 82  
 Davis, Francis, 82  
 Davis, Rose, 81–82, 142, 162  
 Dillingham, Benjamin Franklin, 27–28  
 domestic employees, 3, 7–8, 26, 61, 91–92,  
 117, 140, 141  
 Elbert, Samuel, 57  
 Emma, Queen, 43, 45, 46  
 Emory, Kenneth, 96–97  
 Fujinaga, Yoshio, 3, 7–8  
 Fujiyama, Helen, 8  
 Fujiyama, Wallace S. "Wally," 8  
 Gill, Thomas, P., 33–34  
 Hall, Garvey, 156  
 Hawaiians, 9  
   aquaculture, 99  
   health, 43–45  
   identity, 9–10, 13, 45–47, 49, 97, 129,  
   160–62  
   language, 4, 5, 9, 57, 161  
   sovereignty, 28  
   spirituality, 46  
 Holloway, Irene Haalou Kahalelaukoa I'i  
   Brown. *See* I'i, Irene Haalou Kahalelaukoa  
 I'i, Irene Haalou Kahalelaukoa, 4–5, 12, 18,  
 57, 58, 94, 113, 161  
   and Queen Lili'uokalani, 18, 81  
 I'i, John Papa, 40, 58, 81  
 I'i, Papa, 40  
 Inouye, Daniel K., 33, 35  
 Japanese, during World War II, 26, 27

Kalāhuipua'a (property on island of Hawai'i),  
 95, 96, 97–99  
 Kamehameha the Great, 40  
 Lili'uokalani, Queen, 18, 43  
 Love, Winona, 29  
 Lowrey, Alan, 71, 93  
 MacNaughton, Malcolm, 124, 132  
 Nature Conservancy, The, 51  
 Ossipoff, Vladimir, 59, 112  
 Pukui, Mary Kawena, 57, 58  
 Queen Emma Foundation, The, 57, 58  
 Queen's Hospital. *See* Queen's Medical Center  
 Queen's Medical Center, 43–45, 47  
 Quisenberry, Cynthia Brown, 60, 61, 89  
 race relations, 7–8  
 Ritte, Walter, Jr., 49, 50  
 Rockefeller, Laurance, 100  
 rottweilers, 130, 140  
 Sinoto, Yosihiko, 97  
 Smart, Richard, 51, 114  
 Sterling, Elspeth, 96  
 University of Hawai'i, 46, 97  
 Waipahu, 154  
 Waipi'o (I'i/Brown family property), 7,  
 99–100, 120, 158, 162  
   acquisition of, 40, 136  
   activities at, 12, 67–69, 94–95, 99, 105,  
   114, 128, 131–32, 137, 142, 145, 153,  
   155  
   description, 67–68, 94, 105, 112, 118, 126,  
   130–31, 136–37, 140  
   residents, 157  
   sale: of *ahupua'a*, 27–28; of family estate,  
   158  
   senior center philosophy, 44–45  
   and U.S. Navy, 141  
 Watanabe, Seiji, 141, 145, 146  
 Wight, Samuel G., 31, 142  
 Wong, Kaupena, 57

# **I‘i/Brown Family: Oral Histories**

**Center for Oral History  
Social Science Research Institute  
University of Hawai‘i at Mānoa**

**March 1999**