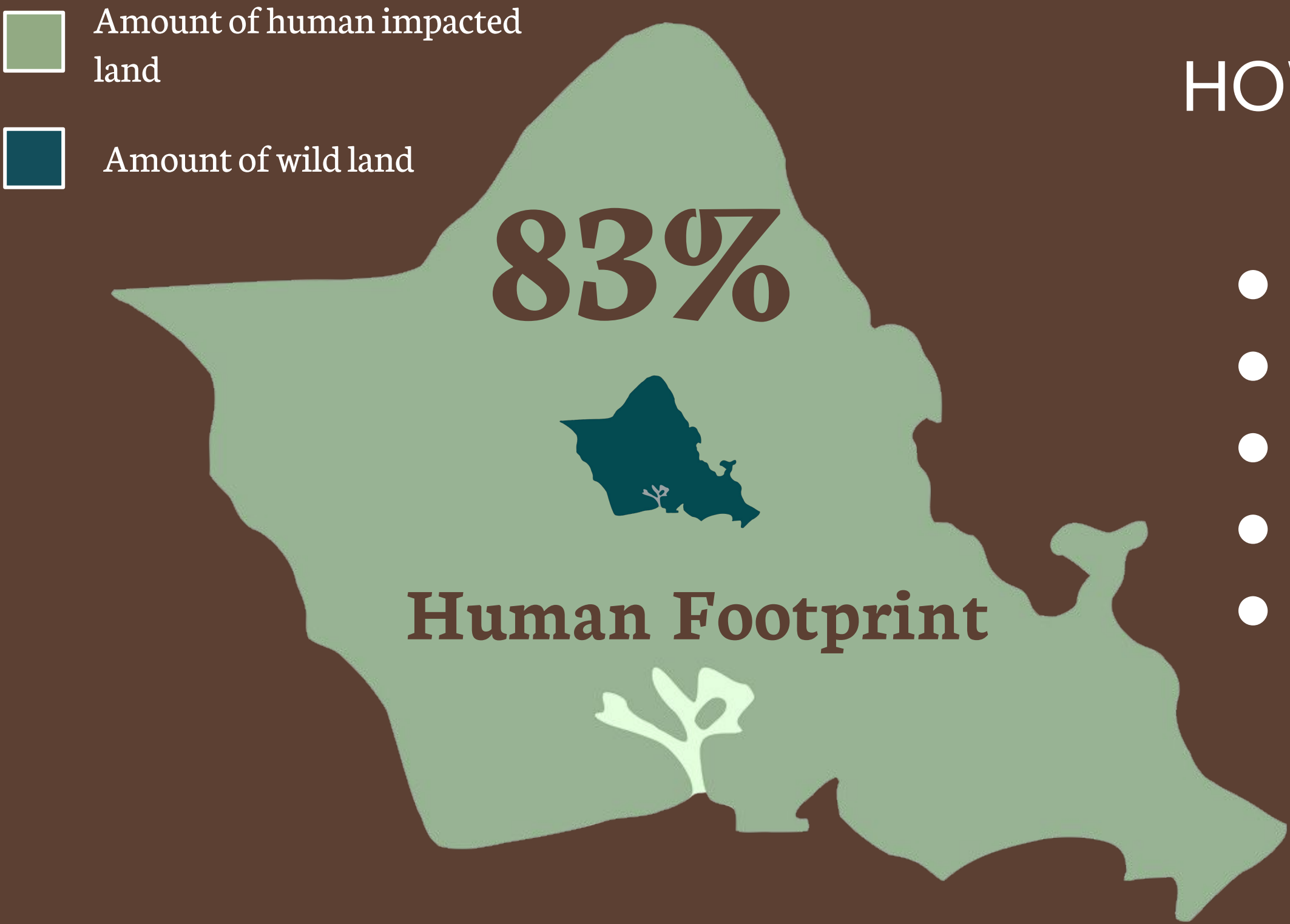


KNOW YOUR NATIVE PLANTS

Ua ma uke ea o ka ‘āina I ka pono • The life of the land is preserved in righteousness



HOW THE HUMAN FOOTPRINT HURTS NATIVE PLANTS:

- Infrastructure
- Agriculture
- Ranching
- Pollution
- Introduction of predators and invasive species

Oahu’s native plants are important culturally, medicinally, and create biodiversity

Do you know the difference between these native species and their invasive look-alikes?



Indigenous: Akulikuli
(*Sesuvium portulacastrum*)



Invasive: Pickleweed
(*Salicornia*)



Endemic: Koa (*Acacia Koa*)



Invasive: Haole Koa
(*Leucaena leucocephala*)

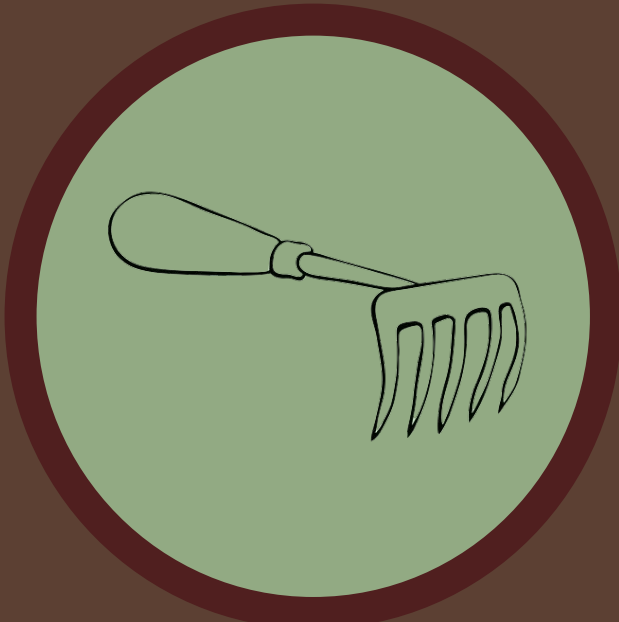


Endemic: *Carex wahuensis*



Invasive: Guinea Grass
(*Megathyrsus maximus*)

If you don’t... Here’s ways humans can change the narrative by learning about and **HELPING** native plants:



Go to community work days that serve native ecosystems To find a work day to attend, visit [Malāma ‘Āina Service Projects](#).



Recognize and treat native species with respect while on hikes or at the beach, don’t trample on them.



Use them in your home landscaping and gardens. To learn which species will grow best in your area, visit [this CTAHR document](#).