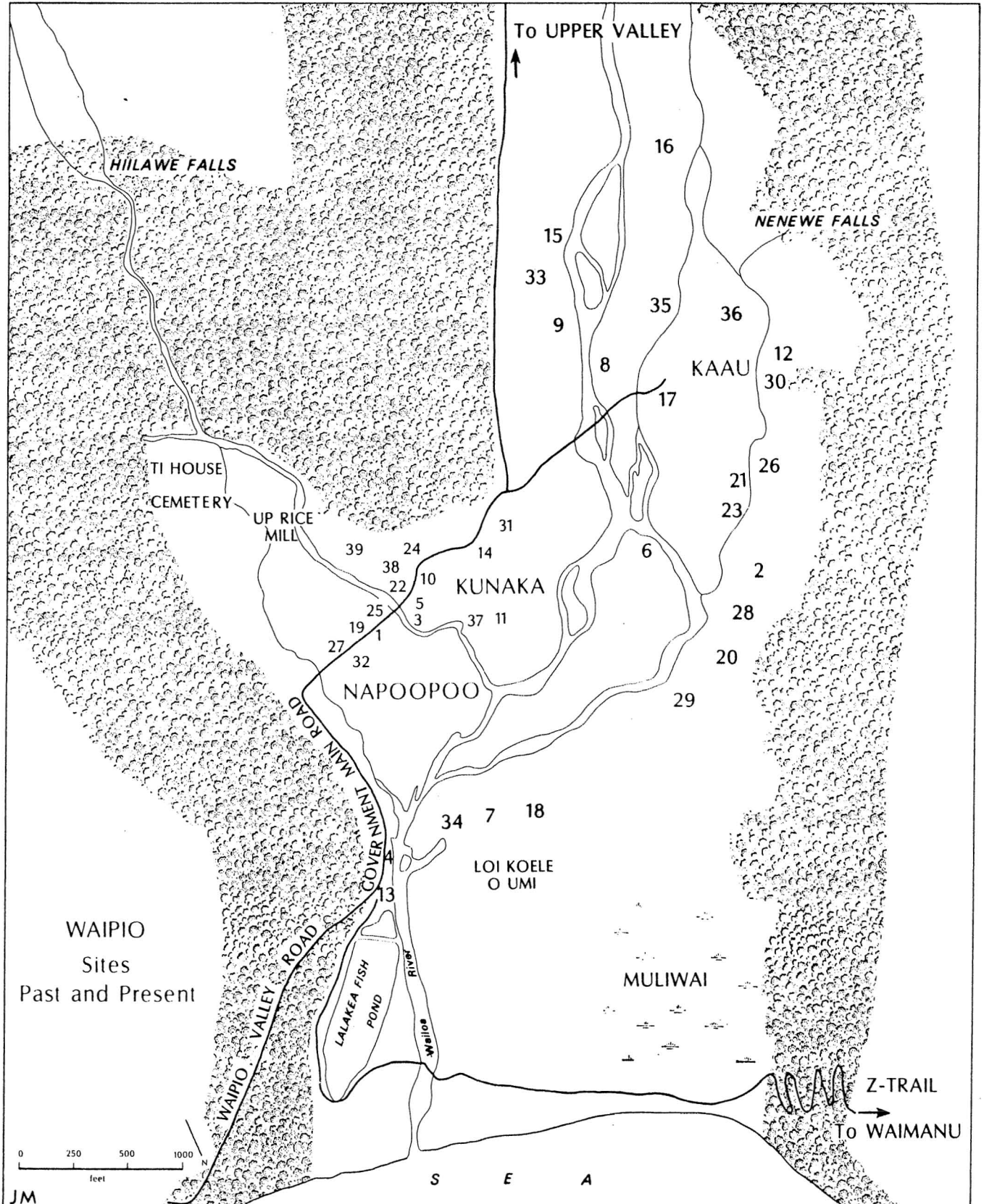


Waipio: Important Sites, Past and Present

The map on the opposite page indicates the approximate locations of important sites mentioned by the interviewees. Some sites are no longer there, but are referred to when the interviewee recalls the past. Sites are current as of June, 1978.

Map Table

1. Ahana (Chang) Store and Poi Factory - no longer there
2. Ainsworth, Sydney and Gloria - taro patches
3. Araki Co-op Poi Factory - non-functioning
4. Araki, Ginji - former home
5. Araki, Tom - home and hotel
6. Batalona, Ka'ai and Kanuha, Haunani - home and taro patches
7. Chun, Nelson - taro patches
8. Duldulao, Fannie - taro patches
9. Farm, George - taro patches
10. Kaaekuahiwi, Peter - home
11. Kaaekuahiwi, Ted - taro patches
12. Kahele, Robert - home
13. Kala, Joe - home
14. Kala, Joe and Kahele, Robert - taro patches
15. Kanekoa, William - taro patches
16. Kanekoa, William - more taro patches
17. Kaneshiro, Seiko - taro patches
18. Kawashima, Suei - taro patches
19. Lau Kong property - site of new house built by Charles and Rachel Thomas
20. Loo, John - taro patches
21. Luhnnow, Bill - home
22. Lui Hing Store - no longer there
23. Maehira, Yubon - taro patches
24. Matsunami, Masaru - property; old macadamia nut orchard
25. Mochida, Steve - weekend home
26. Mock Chew, Sam - taro patches and old poi factory
27. Mormon Church - no longer there
28. Ngayan, Meliton - home
29. Olepau, Fred - home and taro patches
30. Schreiber, Tom - home
31. Thomas, Charlie and Rachel - taro patches
32. Thomas, John - former home
33. Toko, Roy - taro patches
34. Toko, Shirley and Takahashi, Lanny - taro patches
35. Toledo, Merrill - taro patches
36. Toledo, Merrill - more taro patches
37. Zygutis, Patti - home
38. Protestant Church - no longer there
39. School lot; later Peace Corps Camp



XX

Alakehi Stream

Kowaihi Stream

Korawe Stream

Waipio Stream

Waimanu River

Waimanu Bay

Waimea Stream

LOWER HAMAKUA DITCH

Waipio

Hiilawe Falls

Waioe River

Waipio Bay

WAIPIO LOOKOUT

KUKUIHAELE

KUKUIHAELE LANDING

Waipio-WAIMANU

0 3000 7000 feet

CONTOUR INTERVAL-200 FEET

To WAIMEA

MUD LANE

To HONOKAA

KAPULENA

JM

JM

WAIPI'O: MĀNO WAI

AN ORAL HISTORY COLLECTION

Volume I

ETHNIC STUDIES ORAL HISTORY PROJECT

**ETHNIC STUDIES PROGRAM
UNIVERSITY OF HAWAII, MANOA**

December 1978