

Interdisciplinary Social Justice

*Identifying & Filling a Need for a New
Elective*

Rachel Gorenflo, MS 2 | Eden Ines, MS 2 | Dr. Teresa Schiff, Assistant Professor in OME



Background

Establishing the Partnership for Social Justice at JABSOM



- The Partnership for Social Justice (PSJ, formerly SJIG) was founded in 2009

A physician's duty includes social responsibility and accountability toward the emotional, cultural, and socioeconomic context of their patients

- The first recipient of the Dean's Certificate of Distinction (DCOD) in Social Justice awarded in 2013

Goal of the DCOD in SJ: Translate one's understanding of biases and inequalities into tangible strides toward eliminating disparities now and throughout one's career

JABSOM Social Justice Curriculum

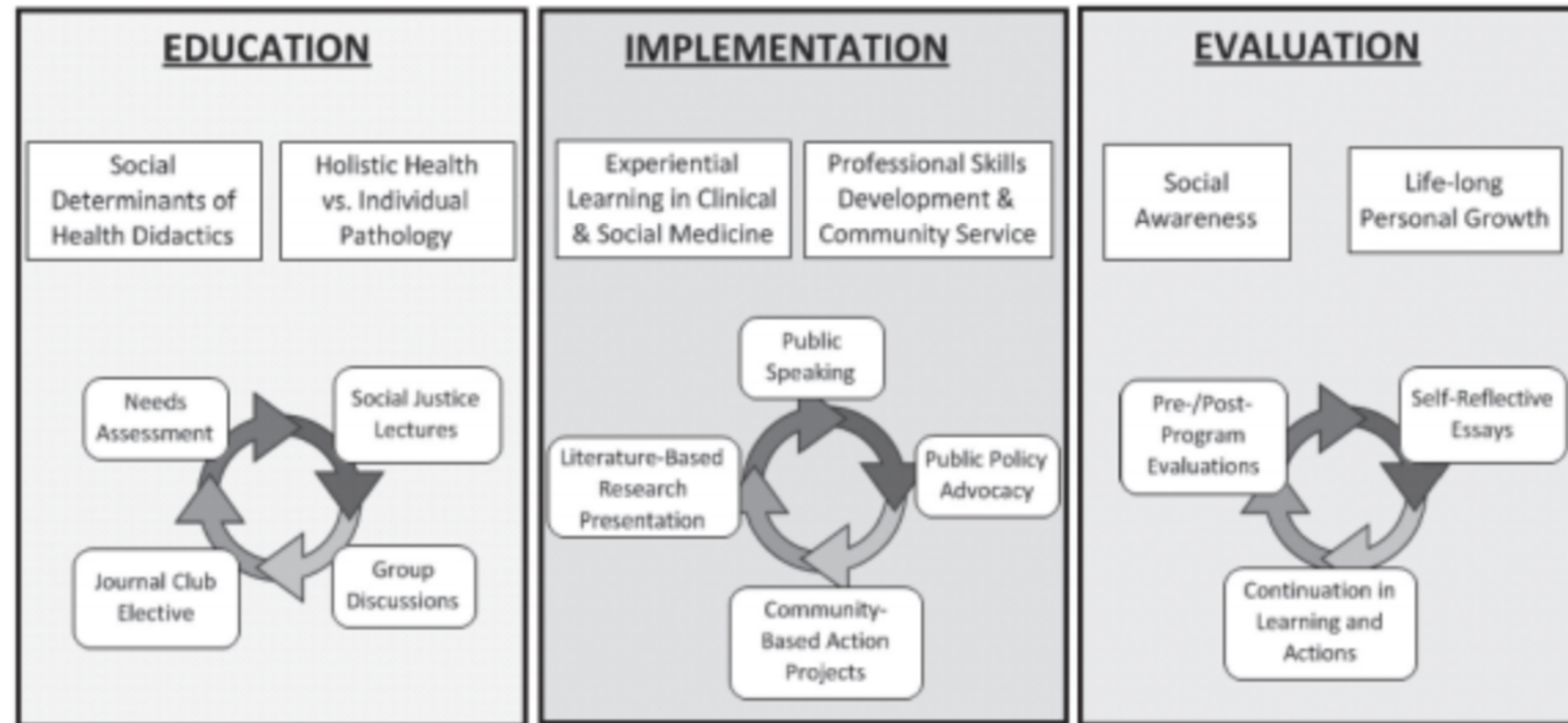
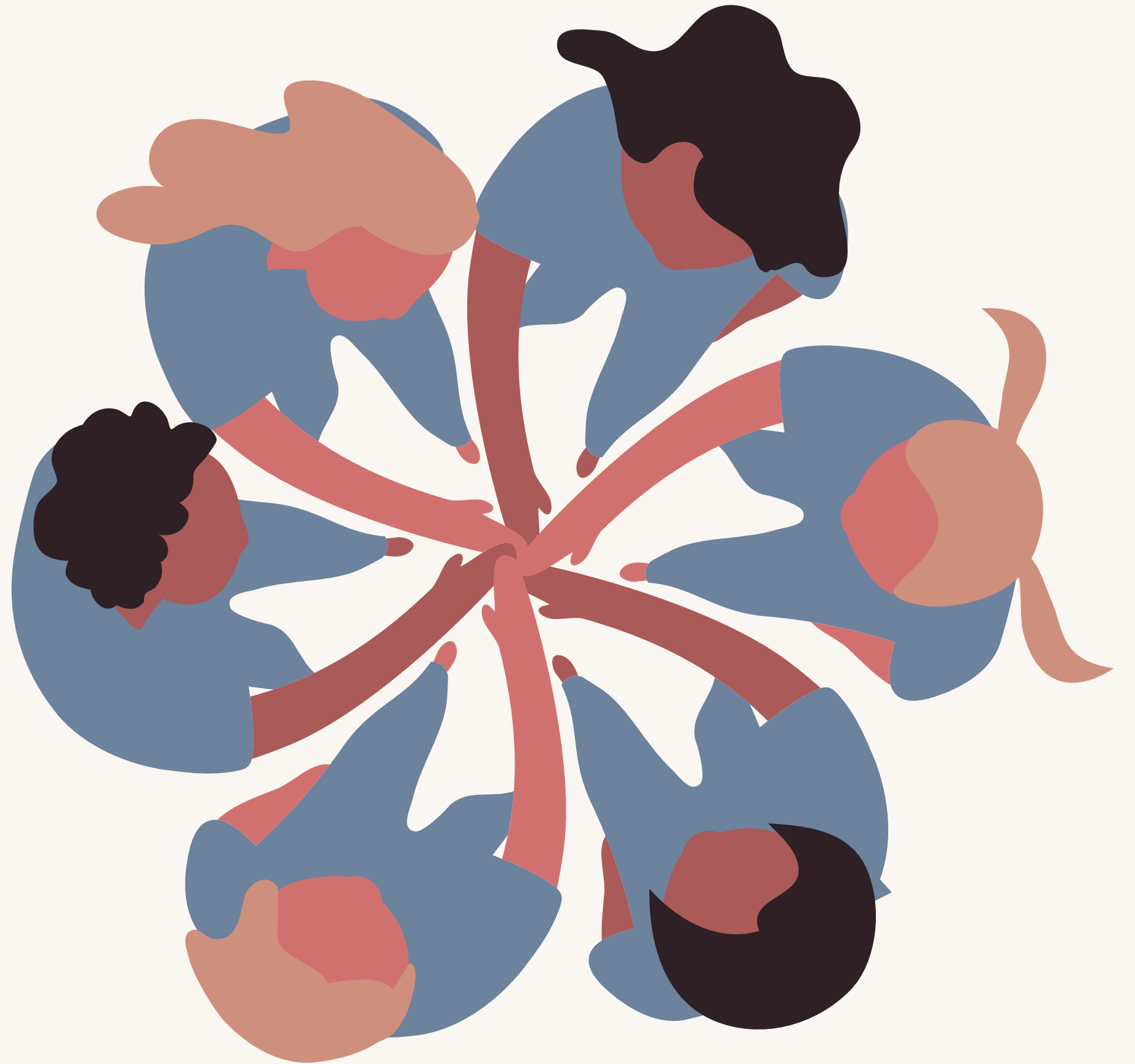


Figure 1. Overview of Social Justice Curriculum. Phase I: Education and Didactics. Phase II: Implementation and Action. Phase III: Self-Reflection and Personal Growth.

The interdisciplinary SJ elective spans the education and implementation phases of the curriculum and provides a much needed missing collaboration with students, faculty, and community partners from other vectors addressing health.

Our Vision

Create an elective that
fosters interdisciplinary
collaboration among
Hawaii's professional
students



Current PSJ Elective

Series of seminars hosted
by MS2s on various social
justice topics for MS1s

New Interdisciplinary SJ Elective

Hopes to build off the current PSJ
elective

Will consist of PBL discussions and
internships with community
organizations

Will be led by MS4s for a
multidisciplinary class of professional
students



Schools Involved

John A. Burns School of
Medicine

William S. Richardson School
of Law

Doctorate Nursing Program
at UH Manoa

Thompson School of Social
Work

Master of Public Health at UH
Manoa

Our Vision

Create an elective that fosters
interdisciplinary collaboration
among Hawaii's professional
students



Our Vision

Encourage interdisciplinary
collaboration in the classroom
and in the community

Components of the Elective



PBL Sessions

Community
Involvement

Interdisciplinary PBL Sessions

Interdisciplinary teams of students will work together to identify medical, legal, and social issues in PBL cases

PBL Topics

- Homelessness & Continuity of Care
- Race, Racism, & Diversity
- Substance Addiction & Rehabilitation

Students' Objectives

- Work together to identify the patient's medical, legal, and social needs
- Think of a care plan that addresses each of the patient's needs
- Discover and learn more about what resources are available for our patients
- Evaluated with a pre and post-survey

Community Involvement

Students will have the opportunity to collaborate with their interdisciplinary teams while interning at a community organization

Community Partners

- Kokua Kalihi Valley - Medical Legal Partnership for Children
- Queens Care Coalition
- H.O.M.E. Project

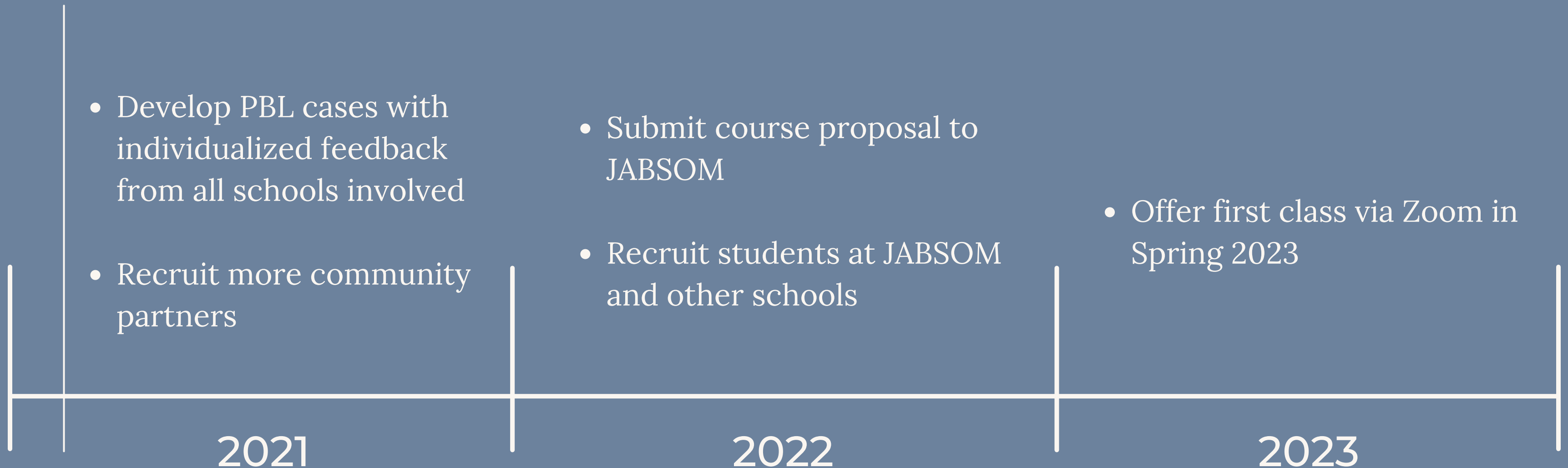
Students' Objectives

- Work with the community leaders to identify issues they want to solve
- Work with their interdisciplinary team and the community to devise and implement a plan to address these issues
- Present what they worked on to their peers at the end of the course. Students will be evaluated by community partner

Our Timeline

First
Interdisciplinary
PSJ Elective Class

Jan 19, 2021



*This is our vision for the future,
but what have we already done?*

The First Interdisciplinary PSJ Elective Class



Jan 19, 2021 - PSJ Seminar on Homelessness & Immigration
11 MSIs & 5 UH Nursing Students Attended

Overview of the Seminar

Students were divided into groups of 3-4 and worked through a **mini-PBL case** together

Students were asked to **identify the patient's medical, legal, and social issues** and think of how they would address these issues

Attorney Dina Shek & Dr. Alicia Turlington of the Medical-Legal Partnership for Children (MLPC) at KKV provided insight into how they would approach the patient's needs at the end of the seminar

Mini-PBL Case

- PBL case was based off a case that Dina Shek & Dr. Turlington use to teach residents
- Case was rewritten in dialogue format to allow students to each play a "role"
- Each page had questions to prompt conversation

Isabella Reyes

The medical student knocks on the door to the patient's exam room and enters to see a girl sitting on the exam table, staring down at her feet. Her mother is sitting in the chair beside her.

The medical student introduces themselves to the patient and her mom.

PATIENT'S MOM: "Hi, I'm Rosa, and this is my daughter Isabella."

Rosa looks at her daughter, hinting at her to say hello. In a quiet voice, Isabella says,

PATIENT: "Hi."

MED STUDENT: "What brings you in today?"

ROSA: "We are here to get a new nebulizer for Isabella. She was diagnosed with asthma 6 months ago and was prescribed a nebulizer, which really helped her, but we lost the nebulizer about a month ago. With the nebulizer, Isabella didn't have any problems, but her asthma has been getting worse since she hasn't been getting her regular asthma meds. She's been coughing and wheezing a lot recently. I know Isabella really needs a nebulizer, but I'm worried about how to pay for it because Medicaid paid for her last nebulizer 6 months ago but won't pay for one now. I'm also thinking of pulling her off Medicaid."

Student Feedback on the Seminar

9/16 students filled out
our post-seminar survey

Areas of Improvement

Some students felt like they needed more background reading prior to the seminar so that they could better engage with the PBL activity

Areas of Strength

Overall, students enjoyed the PBL style with different roles to play & found the discussion questions helpful

All students who responded felt like they could better advocate for their patients after this one seminar

In Conclusion

- Solutions to social justice require interdisciplinary collaboration
- In recognizing the importance of accurately representing all disciplines involved, we are re-writing the cases to better reflect interdisciplinary teams.
- We are creating a way to get students involved at an early stage and encourage a lifelong pursuit of social justice in an interdisciplinary fashion

Mahalo