

Graffiti on a Waianae bridge reads: "Vincent & Duke ABLE TO TAKE A LIFE. Jan, Stell, Val ABLE TO GET HIGH. HAWAIIAN RULES."

CONFLICT: AN URBAN RESORT IN A RURAL COMMUNITY

WEST BEACH RESORT is planned to be built on the Waianae Coast of Oahu, a rural farming and Hawaiian Homestead district. The luxury resort will raise land costs, rentals and the cost of living for 34,000 homesteaders, farmers, fishermen and workers. Strong opposition to the resort exists here where people take matters in their own hands. Less than a mile from West Beach, school buildings have been burned down four times in ten years, the latest \$1 million burning on December 29, 1985; these events reflect oppressive policies.

A DEPRESSED AREA

Waianae District Hawaiians have the highest joblessness, poverty, crime rate, drug and alcohol dependency, poorest health, housing and education in Hawaii. Intruders and tourists entering Waianae are mugged, robbed, sometimes beaten and raped. The Hawaii Visitors Bureau warns tourists not to come here. West Beach developer guarantees no jobs, the resort will resolve none of our problems. It will worsen them--and may not survive them.

LAND AND REPARATION CLAIMS

Serious legal, social, political and resource conflicts haunt the resort development. They include strong nationalist native Hawaiian land reparations for the illegal U.S. overthrow of the Hawaiian government in the 1890's. A serious escalating island-wide water shortage exists due to over-development and deep pesticide pollution of Oahu ground water. Water demand of the resort and other urban plans threatens the livelihoods of 2,000 Waianae farmers and farm workers. Due to our highest cost of living in the nation, many native Hawaiians are homeless in their homeland, living in tents, on beaches or in old cars.

BROAD OPPOSITION

Many urban planners, social scientists and residents deplore the self-interest of land-owner Campbell Estate, greedy developers, foreign investors and local politicians for pushing West Beach, an island of luxury in an erosive sea of poverty and pollution.

Copies of this brochure deposited with Mayor Frank F. Fasi, City and County of Honolulu; Chairman, City Council Land Use Committee; The Hawaii Visitors Bureau; Hawaii's Thousand Friends; The American Lung Association of Hawaii. Also, Head Office, Kumagai Gumi, Co., Ltd., 17-1 Tsukudo-cho, Shinjuku-ku, Tokyo 162, Japan (West Beach corporate financier); and overseas: national and international tourism and related investment agencies. *Cover wording in the style of world promotionals for tourism, condo & land sales in Hawaii.

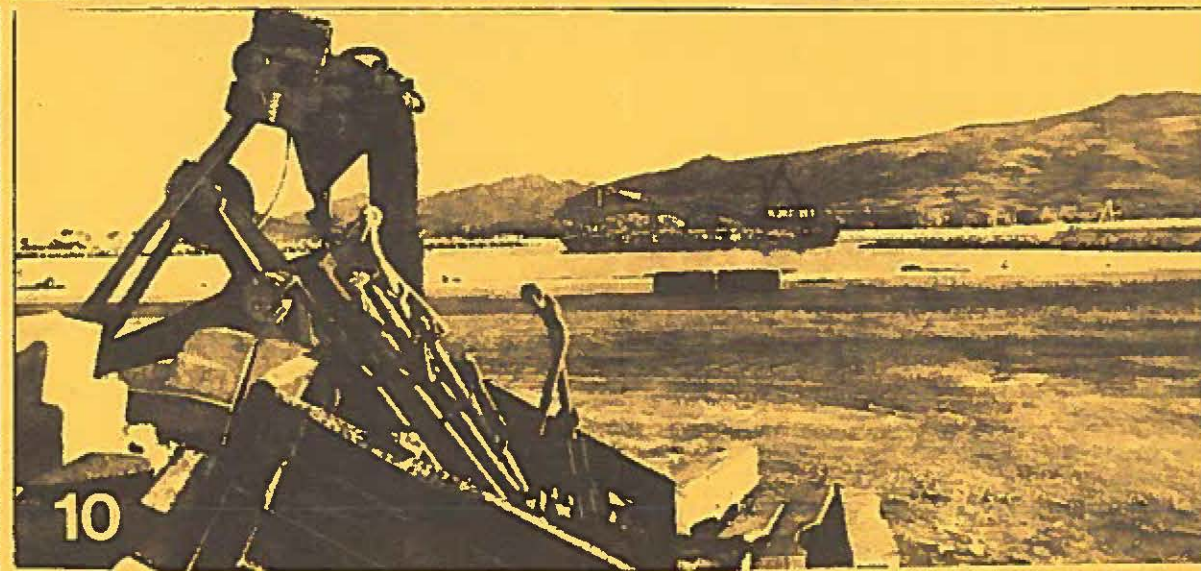
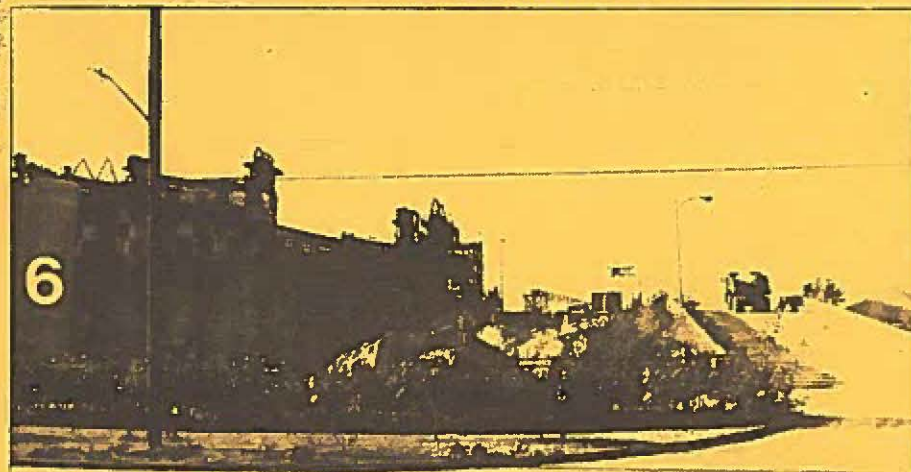
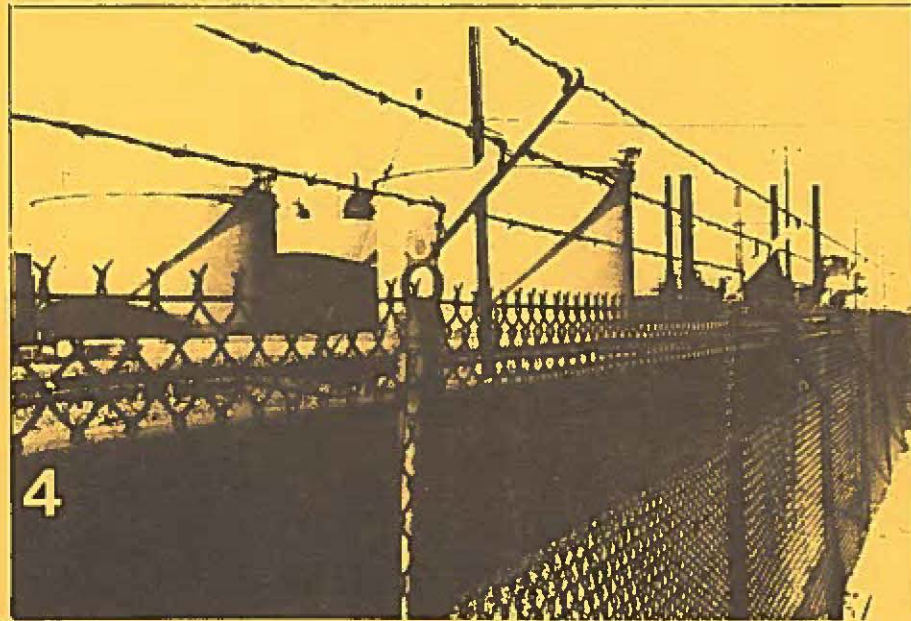
★ Na 'Opio Aloha 'Aina ★
87-229 Laulele Street
Waianae, Hawaii 96792

Find Paradise at West Beach Resort!

Investors --

Come gently into sun-kissed luxury. Endless summers near an irresistible sea. Leisure hours at Hawaii's newest emerging seaside community! Sensational golden sunsets, gentle twilight afterglow. Polynesian beauties whispering "Oh yes! More! More!" For poets—love, rainbows, untouched beaches. For futurists—exotic splendor at West Beach Resort, gateway to gorgeous Waianae Coast—ripe for development. Active retirement in the Rolls Royce of Hawaii where land provides profits galore! Transform poetic visions into treasure, the investment of your dreams! And for one precious moment, let us introduce you to the inviting reality of now...*

• WEST BEACH-- AN ISLAND OF LUXURY IN AN OCEAN OF POLLUTION AND POVERTY! •



★ ★ ★ PLANNING A LUXURIOUS RESORT IN PARADISE--A BLEND OF SOOT, FUMES, DUST, DUMPSITES & NOISE--SOMETHING STIMULATING FOR EYES, EARS, NOSES & THROATS! ★ ★ ★

The \$2 billion "luxury" West Beach Resort (WBR) ① is planned between Hawaii's heaviest and growing industrial area ② and largest oil-fired power plant ③. The nearby ocean is polluted with silt and industrial discharges killing local fisheries. Air over the area contains toxic dust, fumes and cane soot from nearby refineries ④, rock crushers ⑤, cement factory ⑥, a cattle yard ⑦, oil tankers and other industrial sources. Hawaii's largest municipal incinerator/power plant is being built in the area. An associated waste dump access road is across the street from WBR. Palailai dump ⑧ is directly windward of WBR.

Variable winds blow pollutants over WBR area including stockpiled

toxic coral dust ⑨ from a recently dredged large industrial deep-draft harbor ⑩ which interfaces with WBR. Afternoon thermal winds blow pollutants back shoreward. Orange sunsets are due to urban pollutants.

A large \$250 million visible concrete box, an Ocean Thermal Energy Conversion power plant, is planned in the ocean just seaward from WBR ⑪. A prospective ocean-mined minerals processing plant would produce highly toxic acidic wastes in the industrial area near WBR. An 8-inch oil pipeline from refinery to power plant ③ bisects WBR ⑫.

Arid brown hills surround the WBR area. Flames from refinery smoke-stack gas burnoffs shed an eerie pulsating red glow at night. Already exceeding federal air quality standards, seasonal sugar cane burnings

⑬ rain black soot on the WBR area downwind from cane lands. Aircraft fly over WBR and nearby oil and gasoline tank farms for landings and takeoffs from Honolulu International Airport and a U.S. Naval Air Station two miles windward of WBR ⑭. HIA flights over WBR are projected to increase to 271 per day in the next 14 years. Heavy industrial trucks grind in and out of the area day and night on H-1 Freeway. H-1 feeds into Farrington Highway ⑮ which carries roaring traffic early mornings and evenings only yards away from future WBR apartments and condos which will need noise proofing. WBR will nearly triple the present 21,500 vehicle trips per day to over 56,000 and exceed federal noise and pollution standards. (Data from USACE E.I.S. 3-29-85).