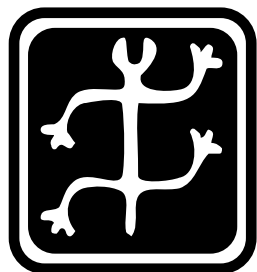




**sign up now for Fall 2001 workshops**



# SLTCC newsletter

News from the Second Language Teaching and Curriculum Center at the University of Hawai'i at Mānoa  
Fall 2001 Volume 12 No. 1

## PacSLRF 2001 Conference a Great Success

On October 4–7, 2001, the University of Hawai'i at Mānoa hosted the 4th Pacific Second Language Research Forum (PacSLRF) at the EWC Imin Conference Center. This international conference, which focuses on second language acquisition (SLA) research, particularly in East Asian, Southeast Asian, and Pacific languages, drew an estimated 320 attendees (well above what was expected) from Hawai'i, the mainland, and countries around the Pacific Rim and was a great success.

New UH President Evan Dobelle opened PacSLRF 2001 with some words on the important role of languages, language education, and research in the state and beyond. During the conference, there were six plenary speakers — William O'Grady ("Language Acquisition and Language Loss"), Karen

Watson-Gegeo ("Mind, Language, and Epistemology: Toward A Language Socialization Paradigm for SLA"), Jeff Siegel ("Issues in Second Dialect Acquisition"), Kevin Gregg ("The State of Emergentism in SLA"), No'eau Warner ("Kū I Ka Māna'ai: Children Acquire Traits of Those Who Raise Them"), and Lydia



*UH President Dobelle opens PacSLRF '01*

White ("Morphological Variability in SLA: A Hardy Perennial") —provoking scholarly discussion and expanding the field. The five colloquia—"Second Language Acquisition in Study Abroad Contexts," "Japanese as a Second Language from Different Perspectives," "Issues in Instructed SLA," "Current Research in Second Dialect Acquisition," and "A New Frontier?: Computer-Mediated Voice Communication for Learning Korean" covered an equally broad range of topics. Individual paper and poster presentations totaled over 100, and altogether, the languages → 3

### *in this issue...*

MCL News Flash .....	2
New NFLRC Website .....	2
Welcome, New Deans .....	3
Demos & Discussions .....	4
Language Learning & Tech. ....	5
SLTCC Workshops .....	6
LLL Presentation Series .....	8
HALT Conference .....	9
New LLL Faculty .....	10
Japanese Video Series .....	11
NFLRC Publications .....	12

*We appreciate feedback: [sltcc@hawaii.edu](mailto:sltcc@hawaii.edu)*



from the Multimedia Computer Lab

FALL 2001 MCL HOURS OF OPERATION

for general use

PC Lab (Moore 153A):

Monday–Friday 8:00am–3:55pm

MAC Lab (Moore 155B):

Monday–Thursday 8:00am–5:55pm

Friday 8:00am–4:55pm

Please check the PC Lab Schedule or Mac Lab Schedule to see if there are classes already using the labs. When the computer lab is reserved for a class, walk-in users may quietly use any open computers. For more information, please call 956-8047, or visit:

<http://www.LLL.hawaii.edu/mcl/>

## The SLTCC Teacher Portfolio & Preparation Series (TiPPS)

The SLTCC Teacher Portfolio & Preparation Series (TiPPS) is on hiatus this semester but will return in a new seven-session format in Spring 2002. This workshop series is geared specifically for graduate students planning a career in language teaching and aims to help better prepare them for the job market (and interviews) they will face upon graduation. Session topics will include:

- Job searches (DOs and DON'Ts)
- Putting together a teacher portfolio/defining your philosophy of teaching
- Creating effective curriculum vitae
- Writing effective cover letters
- Interview tips and practice
- Developing / adapting materials for inclusion in your teacher portfolio
- Wrap-up session (bringing it all together)

TiPPS is co-facilitated by Kenton Harsch (Assistant Director of the English Language Institute) and Jim Yoshioka (Program Coordinator for the NFLRC/SLTCC). For more information on TiPPS (i.e., schedule, registration, resources, etc.), please contact us at [sltcc@hawaii.edu](mailto:sltcc@hawaii.edu) or visit our website at:

<http://www.LLL.hawaii.edu/sltcc/tipps/>

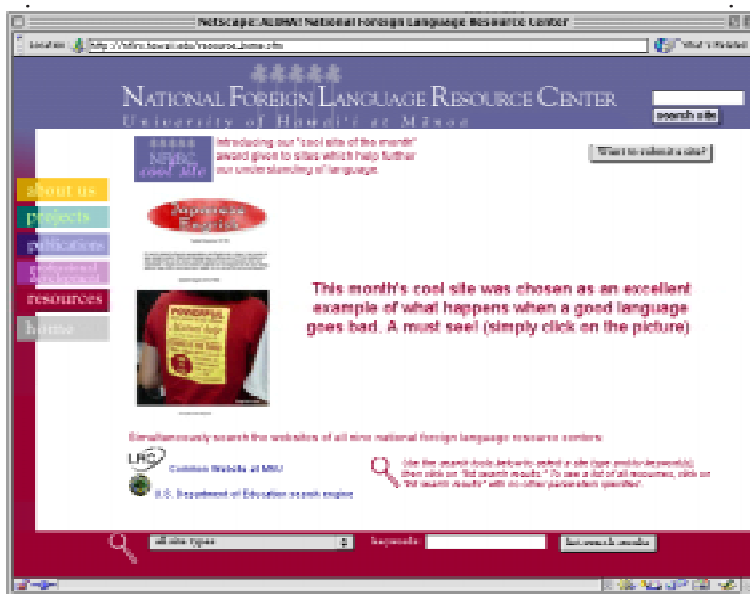
## Do you know of a really cool language website?

?

The UH National Foreign Language Resource Center has upgraded and relocated its website. The new URL is:

<http://www.nflrc.hawaii.edu/>

New features include on-line publications ordering, site-wide and section-specific search capabilities, and an on-line foreign language resources database.



The database includes links to government sites, language teaching organizations, on-line learning sites, study abroad programs, funding sources, references (dictionaries, encyclopedias, etc.), UH resources, and more. The database can be searched by site category and/or by using keywords.

The resource section of the site also features a “Cool Site of the Month.” Each month the “cool site” icon is awarded to a site that distinguishes itself from the herd of foreign language sites in terms of both content and design.

Do you have a favorite on-line foreign language resource? Visit the NFLRC site and fill out the on-line site submission form. Who knows? It may be next month’s Cool Site.

---

# College of LLL welcomes new Dean and Associate Dean

We at the SLTCC would like to offer our warmest welcome and congratulations to Drs. Joe O'Mealy and Jean Toyama, who became the Acting Interim Dean and Associate Dean, respectively, of the College of Languages, Linguistics and Literature after the retirement of Interim Dean Roderick Jacobs in August.

Acting Interim Dean Joseph O'Mealy came to the University of Hawai'i in 1978 from Stanford University where he received his Ph.D. As a Professor of English, his main teaching and research interests are Victorian fiction and modern drama. He is the author of the recently published study *Alan Bennett: A Critical Introduction* (Routledge, 2001). For the last six and a half years, he has served as Acting Associate Dean of the College of LLL, assisting Dean Cornelia Moore and then Interim Dean Roderick Jacobs, before being appointed Acting Interim Dean himself on September 1, 2001.

Born and raised in Hawai'i, Acting Interim Associate Dean Jean Yamasaki Toyama has been a faculty member of the University of Hawai'i for more than thirty years. She has been teaching French language and literature in the Department of Languages and Literatures of Europe and the Americas (LLEA) and recently was Acting Director of the Mānoa Writing Program. Her publications and research are clustered

around three areas: Beckett studies, Japanese/French connection and creative writing in poetry and fiction. She is the author of *Beckett's Game: Self and Language in the Trilogy* (1991), as well as *What the Kite Think* (1994), a collaborative effort with the Japanese poet Makoto Ooka and local poets Josophe Stanton and Wing Tek Lum.



Jean Yamasaki Toyama and Joe O'Mealy

Our best wishes to our new dean and associate dean and for the future directions in foreign and second language education, teaching, and research in LLL under their leadership.

---

*PacSLRF 2001...1 →*

represented throughout the conference included languages of Alaska, Chinese, English, Filipino (Tagalog), French, German, Hawaiian, Indonesian, Italian, Japanese, Korean, Maori, Spanish, Thai, Turkish, Vietnamese, and others, including a number of language varieties such as Hawai'i Creole English (local pidgin), African-American Vernacular, and Aboriginal English.

Among the conference highlights were a reception at the Waikiki Aquarium (full of food, fun, and fish, and featuring Halau Mohala Ilima who did a fabulous traditional hula performance and provided music and

singing throughout the evening) and an informal Saturday luncheon for JSL researchers.

This event was co-sponsored by the National Foreign Language Resource Center, the Center for Pacific Island Studies, the East Asia National Resource Center, the Department of Second Language Studies, and the College of Languages, Linguistics and Literature. The PacSLRF organizers send out a big thank you to all the people who helped support, prepare for, and run the conference. MAHALO NUI LOA!

# Fall 2001 SLTCC Demos & Discussions

(registration not required)

---

## Constraints: A Key to Creativity

Friday, October 26 (tentative)  
12:30–1:30, Moore 155A  
Led by Marion Correnoz, LLEA (French)

The latest classroom methodologies have privileged communication and oral skills at the expense of learners' writing skills. When given an essay topic, students are often at a loss as to which writing strategy to adopt. This presentation will introduce many ways of negotiating writing. In doing so, my reference will be: *Exercices de Style* by Raymond Queneau, which offers almost a hundred ways of telling the same story. The author gave himself strict rules and styles to follow. The concept central to this presentation is that giving constraints to students is the key to enhancing their writing and fostering their creativity in a foreign language.

---

## Developing Japanese Language Aural Comprehension Exercises Based on Authentic Video Materials

Thursday, November 15  
12:30–1:20, Moore Hall 155A  
Led by Susan Hirate, EALL (Japanese)

This presentation will discuss the criteria and procedures utilized as well as the difficulties and problems encountered while developing Japanese language aural comprehension exercises based on authentic video materials. Two videos were used on this project. The first is the movie "Shiko Funjatta" (this movie will be shown immediately after the talk as part of the Japanese Video Series). The second video is a documentary produced by NHK, Japan's national television network, about an amateur singing contest that was recently held in Hawai'i for the second time in forty years. (NOTE: This talk was scheduled for last semester but had to be re-scheduled to this semester because of the faculty strike in April)

## TALENT Workshops

This semester's Teaching and Learning with Electronic Networked Technologies (TALENT) Faculty Development Series consists of five main components:

**Skills workshops** (graphics, powerpoint, html) available through either the media or computing centers at the UH Mānoa campus, other campuses when available.

**Interactive television** available through the media centers at each campus, in which we will discuss issues and concepts related to on-line distance education in general, and WebCT in particular.

**Satellite teleconferences** available at UH Mānoa (Other campuses, if licenses permit). Viewing room must be arranged with media centers.

**Presentations and campus visits:** check for presenting locations, dates, and times at the URL below.

**ADA on-line** made available by *Equal Access to Software and Information* site, via your computer. View web-casts containing audio files with full transcript availability, including real video archives.

Interested faculty may participate in any or all of these activities. Contact your media center (956-2778) or visit:

---

<http://www.dmc.hawaii.edu/>

---

To view the schedule for this semester's **PowerPoint, Photoshop, and WebCT workshops and more** and to get the **PDF version of the manuals** for them, please visit:

---

<http://www.hawaii.edu/talent/talentfall01.html>

---







## Language Learning & Technology

<http://llt.msu.edu>

a refereed journal for second & foreign language educators

*Language Learning & Technology*, a refereed journal sponsored and funded mainly by the University of Hawai'i National Foreign Language Resource Center (NFLRC) and the Michigan State University Center for Language Education And Research (CLEAR), seeks to disseminate research to foreign and second language educators in the U.S. and around the world on issues related to technology and language education. It is published exclusively on the World Wide Web (<http://llt.msu.edu>). LLT is currently published three times per year (January, May, and September).

### **The September 2001 issue (vol. 5, no. 3) includes the following feature articles focusing on *Using Corpora in Language Teaching and Learning*:**

- ✓ "Genres, Registers, Text Types, Domain, and Styles: Clarifying the Concepts and Navigating a Path Through the BNC Jungle" (David YW Lee)
- ✓ "Text Categories and Corpus Users: A Response to David Lee (Commentary)" (Guy Aston)
- ✓ "An Evaluation of Intermediate Students' Approaches to Corpus Investigation" (Claire Kennedy & Tiziana Miceli)
- ✓ "Looking at Citations: Using Corpora in English for Academic Purposes" (Paul Thompson & Chris Tribble)
- ✓ "Lexical Behaviour in Academic and Technical Corpora: Implications for ESP Development" (Alejandro Curado Fuentes)
- ✓ "Teaching German Modal Particles: A Corpus-Based Approach" (Martina Mollering)
- ✓ "The Emergence of Texture: An Analysis of the Functions of the Nominal Demonstratives in an English Interlanguage Corpus" (Terry Murphy)
- ✓ "Exploring Parallel Concordancing in English and Chinese" (Wang Lixun)
- ✓ "A Case for Using a Parallel Corpus and Concordancer for Beginners of a Foreign Language" (Elke St. John)

## *Department of Japanese* **ANNUAL BOOK FAIR**

**Thursday, November 8  
9:00am–3:00pm  
Center for Korean Studies conference room**

The Department of Japanese will be holding its annual book fair on Thursday, November 8 in the Center for Korean Studies. There will be a wide assortment of Japanese books and other items available — from free used books to selections from local bookstores (at a 10% discount). Please come join this event, peruse the tables, and go home with some great new additions to your library!

For more information, please contact the event co-chairs, Patrick Woo (956-6852) or Janice Omura (956-2085).

## Fall 2001 SLTCC Teaching & Technology Series

# Workshops

1

### Introduction to Wenlin

Wednesday, October 24, 4:00–5:30  
(Mac Lab • Moore 155B)  
*Led by John Rylander, LTRLC*

This is an introduction/demonstration and possible hands-on workshop of the Chinese software Wenlin, a recently acquired (thanks to Cyndy Ning) program now installed on all of the Mac lab computers. Wenlin (version 2.1) has the following features: Chinese text wordprocessing for writing in both fanti and jianti, user designed flashcards, stroke-by-stroke display of characters, handwriting recognition, a search feature to find characters in existing texts, a pronunciation unit, a database of character compounds and their frequencies, and most importantly, a user-modifiable dictionary/database using Dr. John DeFrancis' Chinese-English Dictionary. We will discuss how to work with text from on-line newspapers and magazines in Wenlin, how to create your own Wenlin teaching materials for use in the classroom, and how Wenlin can benefit your students (who, like myself, will find this software extremely helpful when reading and writing in Chinese).



2

### Using the Reviewing Tools in Microsoft Word: A Paperless Solution to Giving Feedback on Students' Papers

Wednesday, October 31, 3:00–5:30  
(PC Lab • Moore 153A)  
*Led by John Rylander, LTRLC*

In this workshop I'll go through the steps to show teachers and students how to add comments and edit text using the Microsoft "Reviewing" tool used by copy editors, providing a paperless solution to giving feedback on papers. Along with this, we will look at the options for how to receive, retrieve, and store students' papers in a variety of free on-line storage locations.

3

### Web Resources and Ideas for Teaching the Four Skill Areas

Friday, November 2, 11:00–1:00  
(Mac Lab • Moore 155B)  
*Led by Kerri Russell, NFLRC / EALL*

At this workshop we will discuss ways in which the internet can be used to stimulate language learning both in and out of the classroom. We will look at a variety of web pages and discuss how they can be used to teach the four skills (reading, writing, listening, and speaking). This workshop is not language specific; several languages will be represented in our discussion.

4

### What the H(TM)ell?: An Introduction

Wednesday, November 7, 3:00–4:30  
(Mac Lab • Moore 155B)  
*Led by Pam DaGrossa, NFLRC*

Participants will be introduced to the wonderful world of HTML (hypertext markup language), currently the most widely used language for Web documents. It's not necessary in these days of Dreamweaver and Pagemill, but it sure helps sometimes! Learn the most common HTML coding and how to tweak it to make your document look like you want.

5

### Working with Multi-languages with Windows 2000 and MS Office 2000

Friday, November 9, 3:00–5:00  
(PC Lab • Moore 153A)  
*Led by Kin Chan, LTRLC*



This workshop will introduce the benefits of using the bundled languages software features in Windows 2000 and MS Office 2000 that are installed in the PC lab. Various features of the two Microsoft products, including input methods, built-in web features, as well as cost benefits, impact on users, and development benefits, will be demonstrated and discussed. Minimal skills using PC, Internet and e-mail are required.



## Fall 2001 SLTCC Teaching & Technology Series

# Workshops

6

### Web Publishing, FTP, and Telnet on UHUNIX

Tuesday, November 13, 11:00–12:15

(PC Lab • Moore 153A)

Led by Dong Wan Kang, LTRLC

Every UH faculty and student receives a UH Unix account with 20 MB space. What many people don't know is that they can use this space as their personal briefcase or virtual small hard disk. More importantly, people can set up their own homepage. This workshop walks you step-by-step through the process of storing and transferring files, UNIX basic, and setting up a website on your UH account. No experience is required.



7

### An Introduction to iMovie, Its Interface, and Its Uses (part 1)

Thursday, November 15, 3:30–4:30

(Mac Lab • Moore 155B)

Led by Eddie Pimentel, UHM Apple representative



Familiarize yourself with Apple's groundbreaking new digital video editing software, iMovie 2. Introduction to the fun of creating your own Desktop Movies on a Mac.

8

### iMovie in the Classroom —

Learn More About the Program (part 2)

Thursday, November 29, 3:30–4:30

(Mac Lab • Moore 155B)

Led by Eddie Pimentel, UHM Apple representative

Familiarize yourself with Apple's groundbreaking new digital video editing software, iMovie 2. Discover the fun of creating your own Desktop Movies on a Mac – hands on!

## Register now for Fall 2001 Workshops!

Faculty, staff, and graduate students in language departments may register for workshops by e-mail or voice mail on a first-come first-served basis. Please note that **the maximum number of participants in each workshop is 20**, so register now!

via e-mail: [sltcc@hawaii.edu](mailto:sltcc@hawaii.edu)

Type F2001 WORKSHOP REG in the subject header.

In the message, include your name, position/title, department, e-mail address, daytime phone, and your workshop selections. Be sure to include both the number and title of each workshop you would like to attend.

via voice mail: (95)6–9424

(for those who have no e-mail account)

Leave a voice mail message in the following form:

“Aloha

My name is Anita Vukashun (spelled V-U-K-A-S-H-U-N) and I am a graduate student in the HIPLL Department. I would like to register for the following workshops: #3 Web Resources and Ideas and #4 What the H(TM)ell?: An Introduction. I can be reached by phone during the day at 956–2222. Mahalo.”

**Be sure to include both the number and title of each workshop you would like to attend.**

PINE 3.91 COMPOSE MESSAGE	
To:	sltcc@hawaii.edu
Cc:	
Attchmnt:	
Subject:	F2001 WORKSHOP REG
----- Message Text -----	
name:	Anita Vukashun
e-mail:	vukashun@hawaii.edu
title/position:	grad student
dept:	Hawaiian & Indo-Pacific L & L
phone:	X62222
I would like to register for the following workshops:	
#3 Web Resources and Ideas	
#4 What the H(TM)ell?: An Introduction	

## LLL DEPARTMENT PRESENTATION SERIES

### EAST ASIAN LANGUAGES & LITERATURES DEPARTMENT

#### NO-BROWNBAG COLLOQUIUM

THURSDAYS (12:30–1:20)

TYPICALLY IN MOORE 155A (PLEASE CHECK)

For more information or if you are interested in giving a talk about East Asian languages, contact Hiroyuki Nagahara <hiroyuki@hawaii.edu> at 956-2076. Any topics, including works in progress, reports of workshops, research papers, etc., are welcome!

### LINGUISTICS DEPARTMENT TUESDAY SEMINARS

TUESDAYS (12:00–12:50), ST. JOHN 11

For more information (including schedule of upcoming events), please contact Tatjana Ilic <tatjanailic@hotmail.com> or visit:

<http://www2.hawaii.edu/ling/tuesday.html>

### SECOND LANGUAGE STUDIES DEPARTMENT

#### WEEKLY LECTURE SERIES

THURSDAYS (12:00–1:15), MOORE HALL 119

The Department of Second Language Studies hosts a lecture series throughout each semester. The presenters may be members of the Department, both students and faculty, speakers from other units at UH, or visitors to the Department. A schedule of the talks is posted on the Department bulletin board.

For more information, contact Diana Eades <eades@hawaii.edu>, SLS Lecture Series Coordinator.

### HAWAIIAN & INDO-PACIFIC LANGUAGES & LITERATURES

#### DEPARTMENT PRESENTATIONS

For more information, contact Naomi Losch <nlosch@hawaii.edu>, Academic Affairs, HIPLL.

## ITS WORKSHOPS

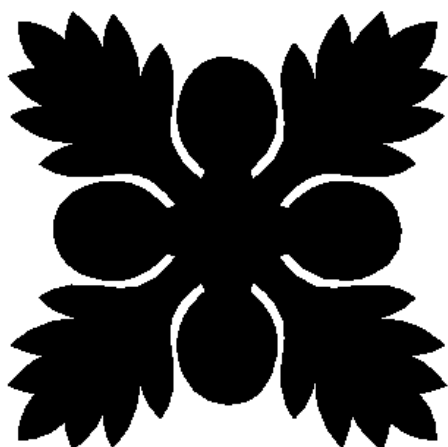
Information Technology Services (ITS) offers a multitude of technology training workshops each semester. Offerings for Fall 2001 include ones dealing with Photoshop, MS Office, MS Word tips, webpage design/efficiency, Eudora, MS Windows, computer security, mail merges, Excel, Hawaiian fonts in MS Word, and much more! For more information, visit:

<http://kuhi.its.hawaii.edu/training/>



---

# Hawai'i Association of Language Teachers



# HALT 2001

## FALL SYMPOSIUM

## Internet in the Foreign Language Classroom

**Saturday, October 27, 2001**

**8:00am–12:15pm**

**at the**

**University of Hawai'i at Mānoa**

**Moore Hall 155A**

---

*The Fall Symposium is free!*

---

8:00–8:30	breakfast and membership renewal
8:30–9:00	introduction to program
9:00–10:30	session I
10:30–10:45	break
10:45–12:15	session II

Participants will choose two of the three sessions:

**Finding Resources on the Internet for Beginners**

*Esther Rodrigo Diez & Kerri Russell*

**Web Page Design with Blackboard**

*Steve Jacques & Hildre Herrera*

**Designing Internet Activities**

*Tess Lane & Stephen Fleming*

Contact Tess Lane (236–2052) or [tlane@hpu.edu](mailto:tlane@hpu.edu) for more information.

---

# Introducing new faculty in the College of LLL

## part 1

There are some bright new faces on campus! The SLTCC would like to introduce and welcome a number of recently hired professors to the College of Languages, Linguistics and Literature. (More will be profiled in our Spring 2002 issue). Their broad range of specialties and interests are sure to expand and enhance the University of Hawai'i's reputation for excellence in language research and teaching, and we send our best wishes and aloha!

**Benjamin K. Bergen** is an Assistant Professor in the Department of Linguistics. He received his Ph.D. in linguistics from UC Berkeley. His research areas include construction grammar and cognitive grammar, neural computation, probabilistic language phenomena, lexical processing, metaphor, and sound symbolism. He additionally specializes in French liaison, deictics and existentials, and Native Esperanto. His current interests include the psychological reality of phonaesthemes, particularly in language processing, Embodied Construction Grammar, and the use of social variables in individual language processing. Recent publications include "Probability in phonological generalizations: Modeling optional French final consonants," "Simulation-based language understanding in Embodied Construction Grammar," and "Nativization processes in L1 Esperanto." E-mail: [bergen@hawaii.edu](mailto:bergen@hawaii.edu)

**Kimi Kondo-Brown** has recently been "rehired" as Assistant Professor (Japanese language pedagogy) in the Department of East Asian Languages & Literatures. She received her doctorate in Education in 1998 from UHM and Master's degree in Linguistics from the University of Utah in 1987. She has taught Japanese at UHM since 1988 and is currently teaching JPN 620 (Teaching practicum in Japanese language) and team-teaching JPN 101 with her graduate students taking JPN 620.

Prof. Kondo-Brown has published a number of journal articles related to Japanese language pedagogy, heritage language development, and bilingual education in such refereed journals as *Linguistics and Education*, *International Journal of Bilingual Education and Bilingualism*, *Acquisition of Japanese as a Second Language*, *Foreign Language Annals*, *Japanese Language and Literature*, and *The Japan Journal of Multilingualism and Multiculturalism*. She has also co-authored some NFLRC publications on Japanese placement tests (with J. D. Brown), needs analysis (with Iwai et al.), and motivation (in Dornyei & Schmidt, editors). Her recent work on

assessing Japanese L2 writing performance analyzed by a computer program called "FACETS" is in press in *Language Testing*. Also her entry on "Heritage language development" in *Literacy in America: An encyclopedia* is forthcoming.

For the last two years, Prof. Kondo-Brown has been involved in a three-year program evaluation project for the Hawai'i Department of Education's pilot standards-based Japanese language program at the elementary school level. She reported the results of the longitudinal and cross-sectional analyses of the L2 achievement of the children participating in the program at the recent PacSLRF 2001 conference. She is also a member of the editorial advisory board of *Journal of Language, Identity, and Education*, a new international refereed journal.

E-mail: [kondo@hawaii.edu](mailto:kondo@hawaii.edu)

**Uli Kozok** is an Assistant Professor of Indonesian in the Department of Hawaiian & Indo-Pacific Languages and Literatures. He received his MA (1989) and Ph.D. (1994) from Hamburg University in Germany. From 1994-2001, he was a Senior Lecturer in Indonesian at the University of Auckland, New Zealand, teaching Indonesian language and literature, as well as a wide variety of cultural topics, ranging from Austronesian linguistics and prehistory to contemporary Indonesian politics and society.

Prof. Kozok's main research interests comprise oral literatures of Sumatra, and Sumatran philology. His research interests are not limited to philological matters in the traditional sense, but extend well beyond classical philology. He examines philological evidence within the theoretical framework of orality and literacy studies by focusing on communication, culture and technology in premodern societies, and the transition of these peoples into societies with fully developed literacy. His recent research focuses on Island Southeast Asian paleography, which has resulted in a book on the development of the northern Sumatran scripts. This research will be continued covering all indigenous writing systems of Indonesia and the Philippines. Other research interests include the development of Internet based teaching material. His first project, a popular comic strip supplemented with word lists, cultural notes, and interactive exercises, has been accepted for publication in print as well as on-line. Another project, the development of an Indonesian image database, has been nearly completed.

E-mail: [kozok@hawaii.edu](mailto:kozok@hawaii.edu)

---

# *Fall 2001 Japanese Video Series*



Interested in Japanese culture? Want the chance to stretch and improve your Japanese language ability? Need a break from studying? Then, grab a seat and enjoy the latest offerings in the Japanese Video Series!

Movies are shown in Moore 155A from 1:30 to 3:30pm.

---

Thursday, October 25

## **WHISPERS OF THE HEART**

An animated film about a young girl who dreams of becoming a writer and finds that she and a boy she hardly knows at school share similar tastes in reading. She later meets the boy's grandfather and is drawn into a world of creative effort and endeavor. (1995, 111 min., Japanese dialogue with English subtitles)

---

Thursday, November 15

## **SHIKO FUNJATTA**

A heart-warming drama about a group of mismatched students who find themselves joining up with a sumo club at a small university. Individual members of the club learn important lessons during the course of their sumo training leading up to the final tournament of the school year. Directed by Masayuki Suoo. (1992, 103 min., Japanese dialogue without English subtitles)

---

Thursday, December 6

## **JUUGOSAI Gakkoo IV**

A middle school boy who refuses to return to school for about six months runs away from home, and sets out for an adventure by hitchhiking to the island of Yakushima in Kyushu to see the ancient Jomon cryptomeria tree. Along the way he meets various people who affect his life and whose lives he affects. By Yooji Yamada, director of the Gakkoo series. (2000, appr. 120 min., Japanese dialogue without English subtitles)

For more information about the series, contact Susan Hirate <hirate@hawaii.edu>

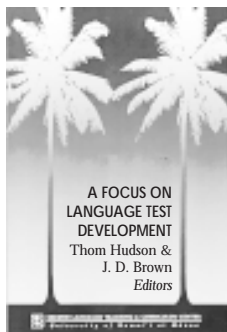
---

**Yuko Otsuka** is an Assistant Professor of Linguistics who came to UH Mānoa in 2000. From 1990 to 1992, she worked in Tonga as a member of the Japan Overseas Cooperation Volunteers, teaching Japanese as a foreign language at Vava'u High School. She received her BA from International Christian University in Japan, and MPhil and DPhil from the University of Oxford. Her primary research interests are formal syntax (in particular, the Minimalist Program) and Polynesian languages. Her work has been focusing on Case related issues in Tongan. She is also interested in other Austronesian languages, endangered languages, and language planning. Currently, she is working on a project promoting Tongan language education in Tonga.

Prof. Otsuka's publications include "Syntactic ergativity and the nature of pronouns in Tongan," "Syntactic ergativity in Tongan," and "Empty categories in Tuvaluan: NP-trace, PRO, pro, or variable?" Courses taught in the 2000-2001 academic year are Ling102 (Introduction to the Study of Language), Ling345 (Polynesian Language Family), Ling640X (Syntax Practicum), and Ling750X (Minimalist Program).  
E-mail: yotsuka@hawaii.edu

**Amy Schafer** is an Assistant Professor of Linguistics, with a specialization in psycholinguistics. She completed her doctoral work at the University of Massachusetts at Amherst, where she received training in linguistics and cognitive psychology. Prior to coming to Hawai'i she conducted postdoctoral research in the Departments of Psychology and Speech-Language-Pathology at the University of Kansas and the Department of Linguistics at UCLA. Her research interests include the various ways in which durational and melodic information is used in the comprehension and production of sentences, the means by which this and other information is integrated in comprehending and producing sentences, and the neural bases of such processes. Some of her recent publications are: "Focus and the interpretation of pitch accent: Disambiguating embedded questions" (2000), "Prosodic resolution of prepositional phrase ambiguity in ambiguous and unambiguous situations" (2000), and "Effects of accentual phrasing on adjective interpretation in Korean" (2001).  
E-mail: aschafer@hawaii.edu

### New Technical Report



#### ***A Focus on Language Test Development:***

#### ***Expanding the Language Proficiency Construct Across a Variety of Tests***

Thom Hudson & J. D. Brown (Eds.) (2001)

This volume presents eight research studies which introduce a variety of novel, non-traditional forms of second and foreign language assessment. To the extent possible, the studies also show the entire test development process, warts and all. These language testing projects not only demonstrate many of the types of problems that test developers run into in the real world but also afford the reader unique insights into the language test development process.

0-8248-2351-6-X \$20

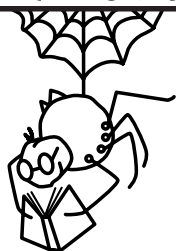
### New Research Note

#### ***Developing Korean Language Performance Assessments***

J. D. Brown, Thom Hudson & Youngkyu Kim (2001)

This Research Note reports on a task-based performance assessment development project for Korean as a foreign language through the National Foreign Language Resource Center at the University of Hawai'i. It contains an overview of college-level Korean language teaching and testing in the United States as well as an introduction to task-based performance assessment in general and the design of performance assessment tasks using test and item specifications in particular. Questionnaire forms used and prototype tasks developed in English and Korean are presented in the appendices.

### NETWORKS



The NFLRC offers an on-line collection of scholarly papers, sample chapters from our Technical Reports series, annotated bibliographies, symposium proceedings, and other publications. These "NetWorks" encompass a broad range of language learning and teaching topics and are presented in several different web-friendly formats – websites, databases, and downloadable PDF documents. Many NetWorks are the work of UH faculty and students in the College of LLL.



*get published on-line!*

**We are always looking for quality papers to include  
in our collection and welcome your submissions.**

Contact Deborah <mastersn@hawaii.edu>

more info/order on-line: <http://www.nflrc.hawaii.edu/>