



PICTURE ONE



PICTURE TWO



PICTURE FOUR



PICTURE FIVE



PICTURE SIX



PICTURE SEVEN



PICTURE EIGHT



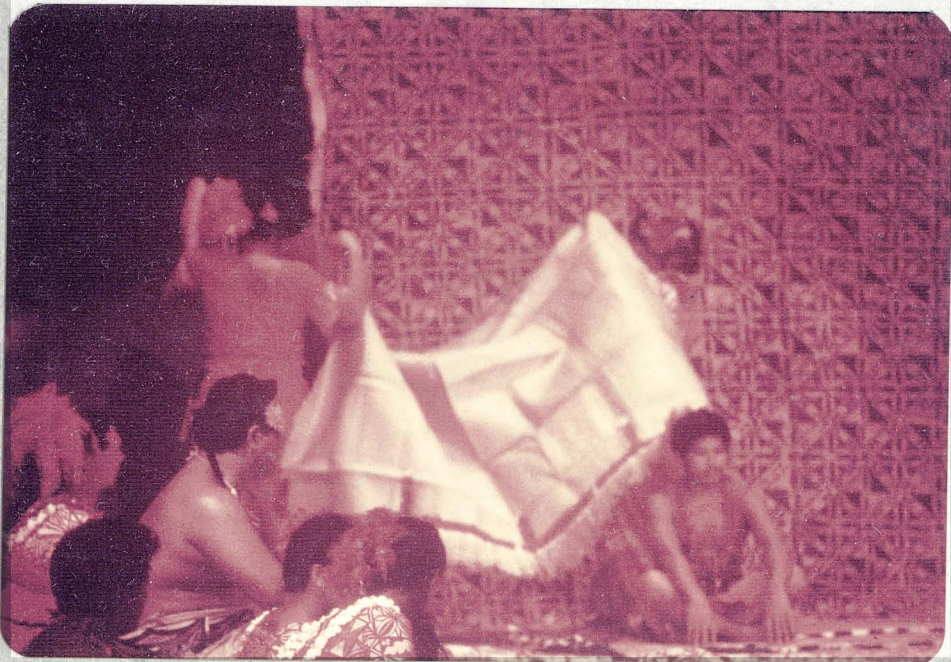
PICTURE NINE



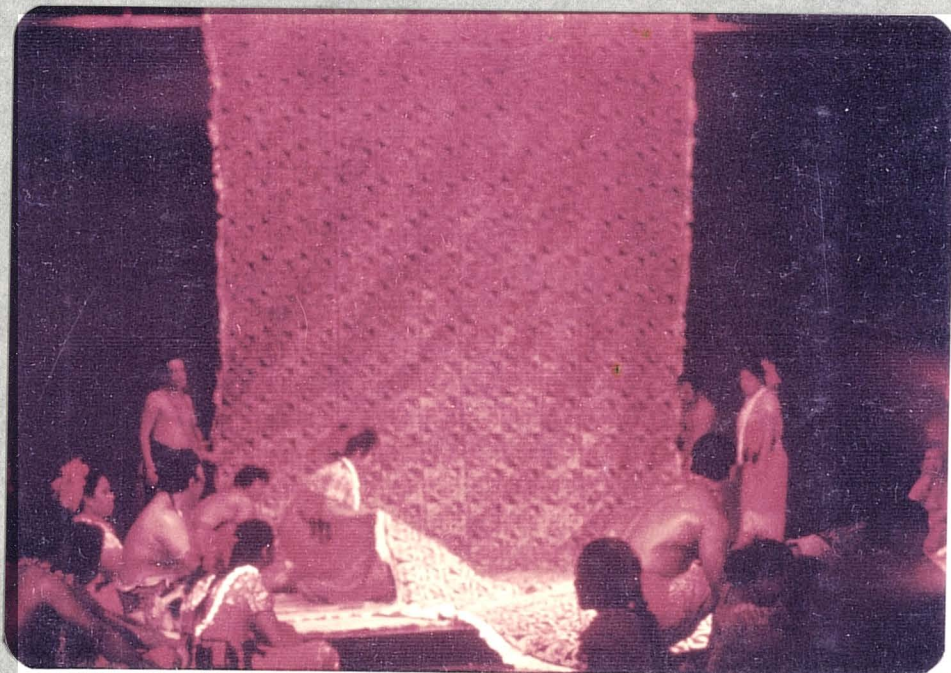
PICTURE TEN



PICTURE ELEVEN



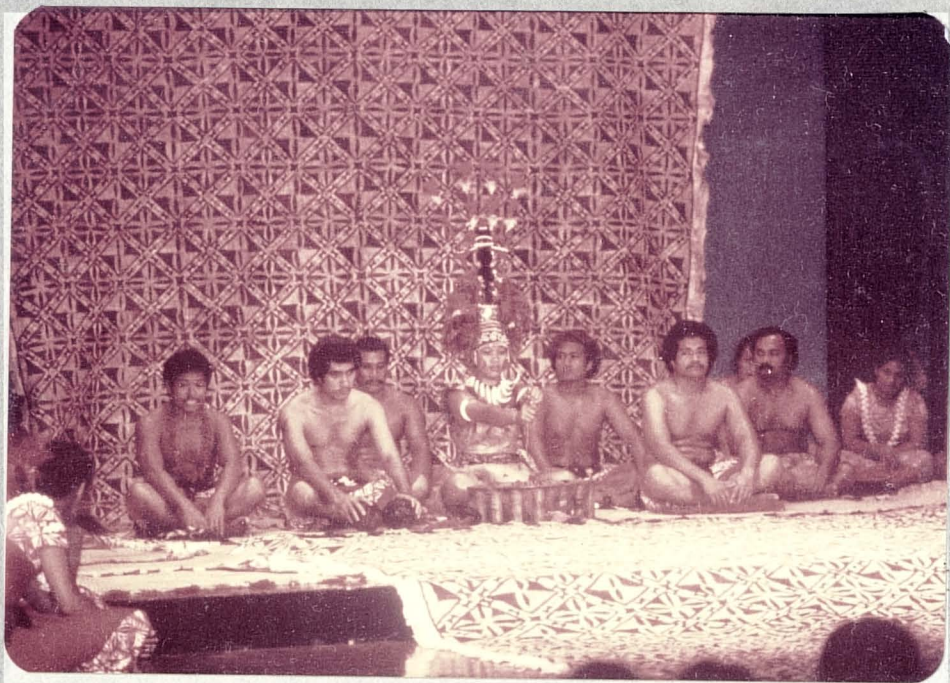
PICTURE TWELVE



PICTURE THIRTEEN



PICTURE FOURTEEN



PICTURE FIFTEEN



PICTURE SIXTEEN



PICTURE SEVENTEEN



PICTURE EIGHTEEN

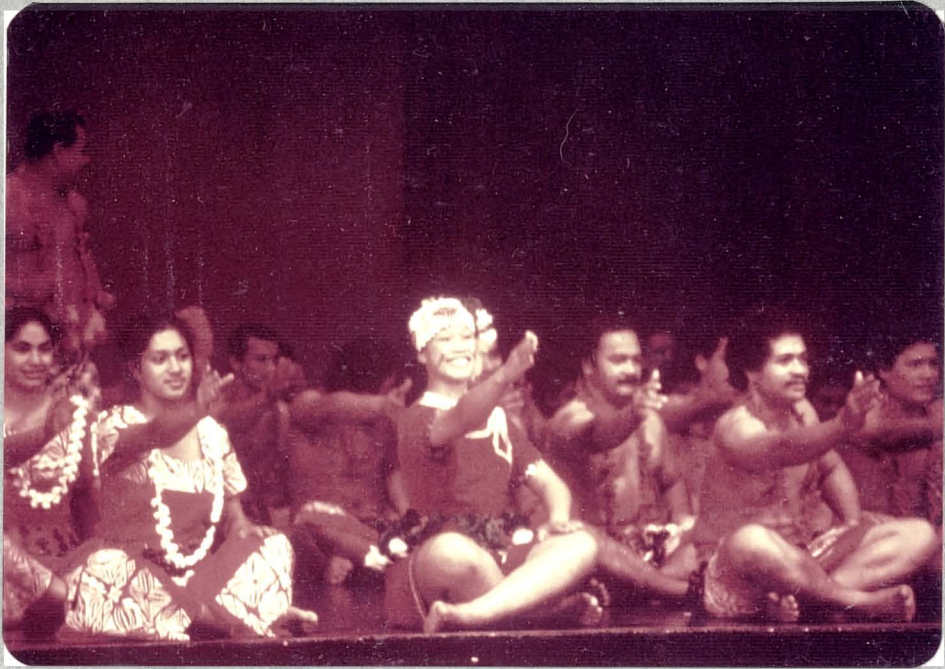


PICTURE NINETEEN

MILLERS FALLS
EZEKIAH
COTTON COMPANY



PICTURE TWENTY



PICTURE TWENTY-ONE



PICTURE TWENTY-TWO



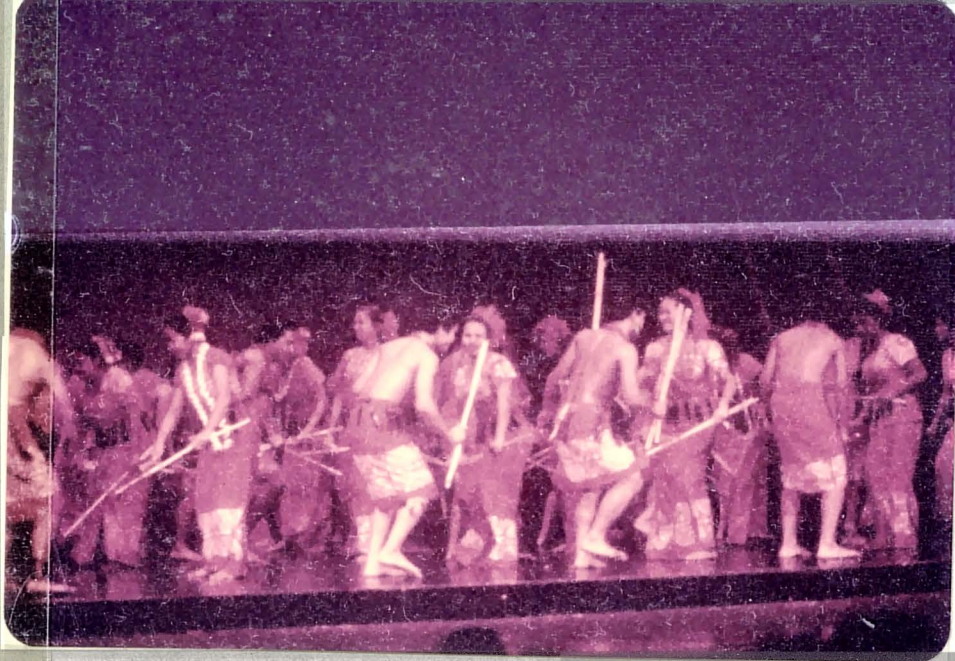
PICTURE TWENTY-THREE



PICTURE TWNETY-FOUR



PICTURE TWENTY-FIVE



PICTURE TWENTY-SIX



PICTURE TWENTY-SEVEN



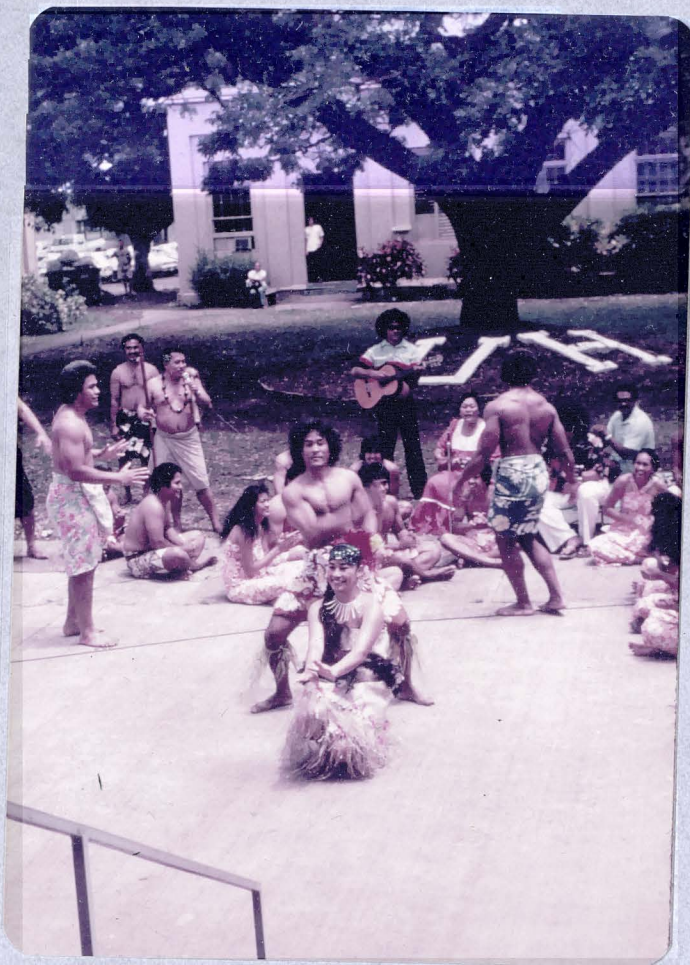
PICTURE TWENTY-EIGHT



PICTURE TWENTY-NINE



PICTURE THIRTY



PICTURE THIRTY-ONE



PICTURE THIRTY-TWO



PICTURE THIRTY-THREE



PICTURE THIRTY-FOUR



PICTURE THIRTY-FIVE



PICTURE THIRTY-SIX



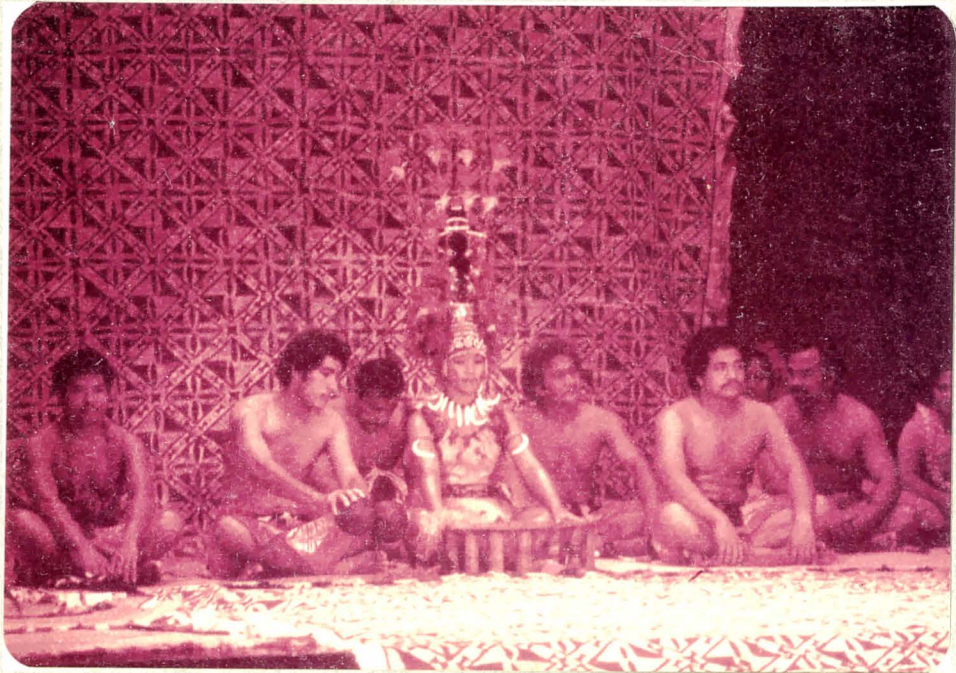
PICTURE THIRTY-SEVEN



PICTURE THIRTY-EIGHT



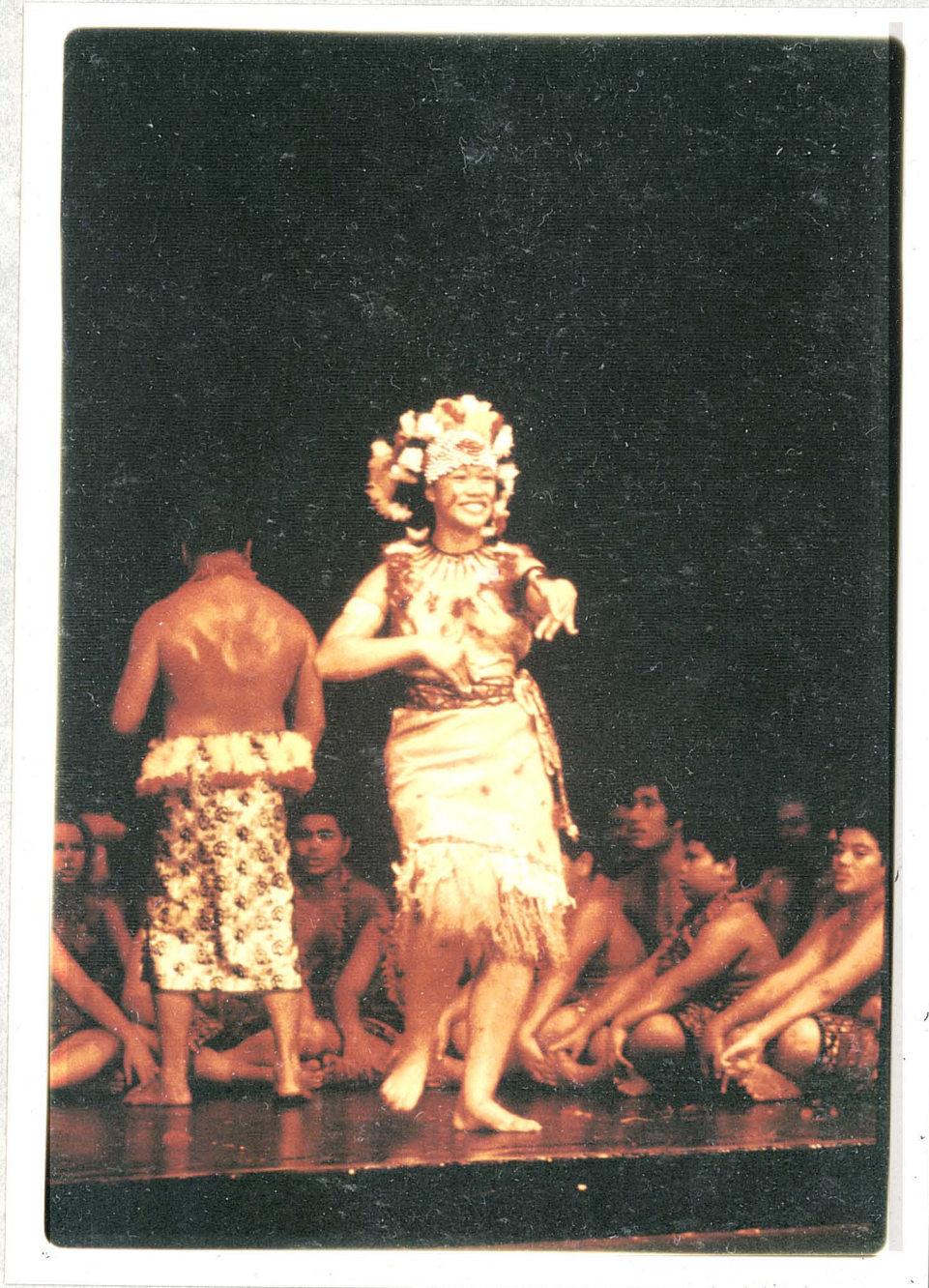
PICTURE THIRTY-NINE



PICTURE FORTY-ONE



PICTURE FORTY-TWO



PICTURE FORTY

THE AMERICAN SAMOA ARTS COUNCIL
in association with
ASSOCIATED PACIFIC ARTISTS
presents
The AMERICAN SAMOA ARTS COUNCIL CHOIR

Samoa Spectacular



1981 Tour
CALIFORNIA
San Francisco Laguna Hills
San Jose Carson
San Diego Pasadena
El Cajon Los Angeles
HAWAII
Honolulu

PICTURE FORTY-THREE

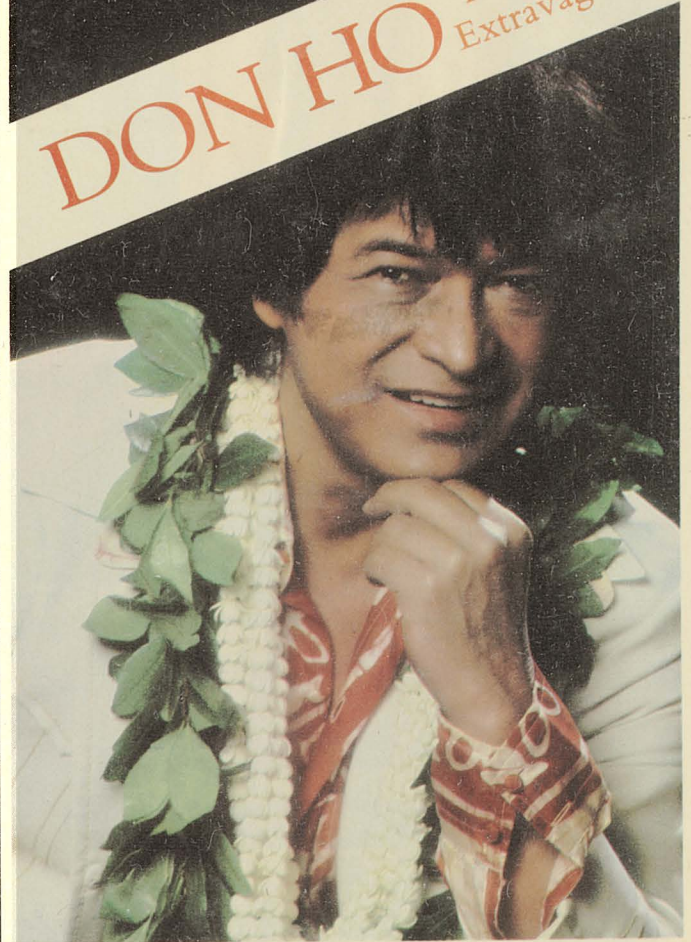
Follow the Rainbow...



THE DON HO POLYNESIAN EXTRAVAGANZA
Hawaii's favorite entertainer performs
with an outstanding island cast, nightly
except Saturday in the fabulous Hilton Dome.

 **HILTON HAWAIIA**
2005 Kalia Road, Honolulu, HI 96815

DON HO Polynesian
Extravaganza



IN THE FABULOUS
HILTON DOME SHOWROOM
Starring Don Ho and his outstanding cast of
Island Entertainers and featuring the
multitalented Surfers.

PICTURE FORTY-FOUR

Ad from This Week Oahu.
November 8-14, 1982.

TOO GOOD TO MISS
THE ORIGINAL, THE ONE AND ONLY

Germaine's LUAU

**A night in old
Hawaii you
will never forget.**

ON THE BEACH, just 35 minutes and 100 years
from Waikiki.

HAWAII'S FINEST LUAU. Piilani Watkins and a cast
of 26 present the songs, dances and lavish costumes of
Hawaii and the Pacific islands. You'll want to take your
memories home in pictures.

IMU CEREMONY. Thrill to the chant and procession
of the aliis of old as the pig is taken from its roasting pit.

ALL YOU CAN EAT AND DRINK. Unlimited feasting
and drinking in a variety to please all.

RELAX AND ENJOY HAWAIIAN STYLE as the sun
sets on the ocean. Wear your "hang loose" clothes. This is
a luau the way luaus were meant to be, and ARE at
Germaine's.

6 Nights A Week. Every Night Except Friday.

GET YOUR RESERVATIONS
IN EARLY. CALL DIRECT

949-6626 or 941-3338

Waikiki Hotel Pickup.

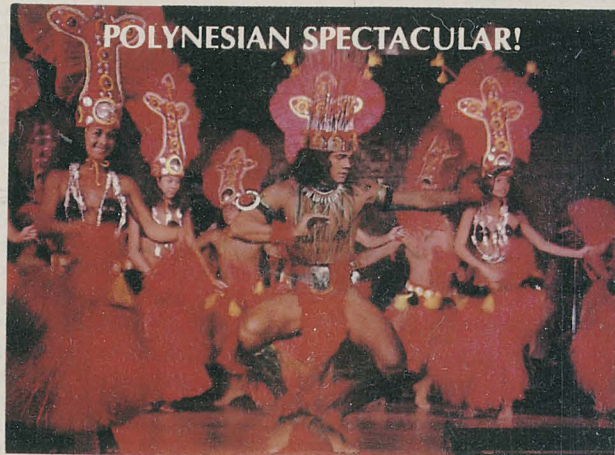
If you miss
Germaine's
LUAU
you miss Hawaii



Experience

TAVANA'S

POLYNESIAN SPECTACULAR!



*Hawaii's most exciting polynesian show! Fabulous
costumes! Pulsating dances! Traditional Hawaiian
hulas and chants! The South Pacific comes to life
at the islands' most popular location.*

TWO SHOWS NIGHTLY!

Dinner Show seating at 6 pm and 8:30 pm

Cocktail Show seating at 6:30 pm and 9:15 pm

For information or reservations call:

923-0211 or 923-2995 or see your travel desk.

TAVANA'S, INTERNATIONAL MARKET PLACE
2330 Kalakaua Ave., Honolulu, Hawaii 96815

PICTURE FORTY-SIX

Ads from This Week Oahu.
December 6-12, 1982.

PICTURE FORTY-FIVE

Guide to Oahu

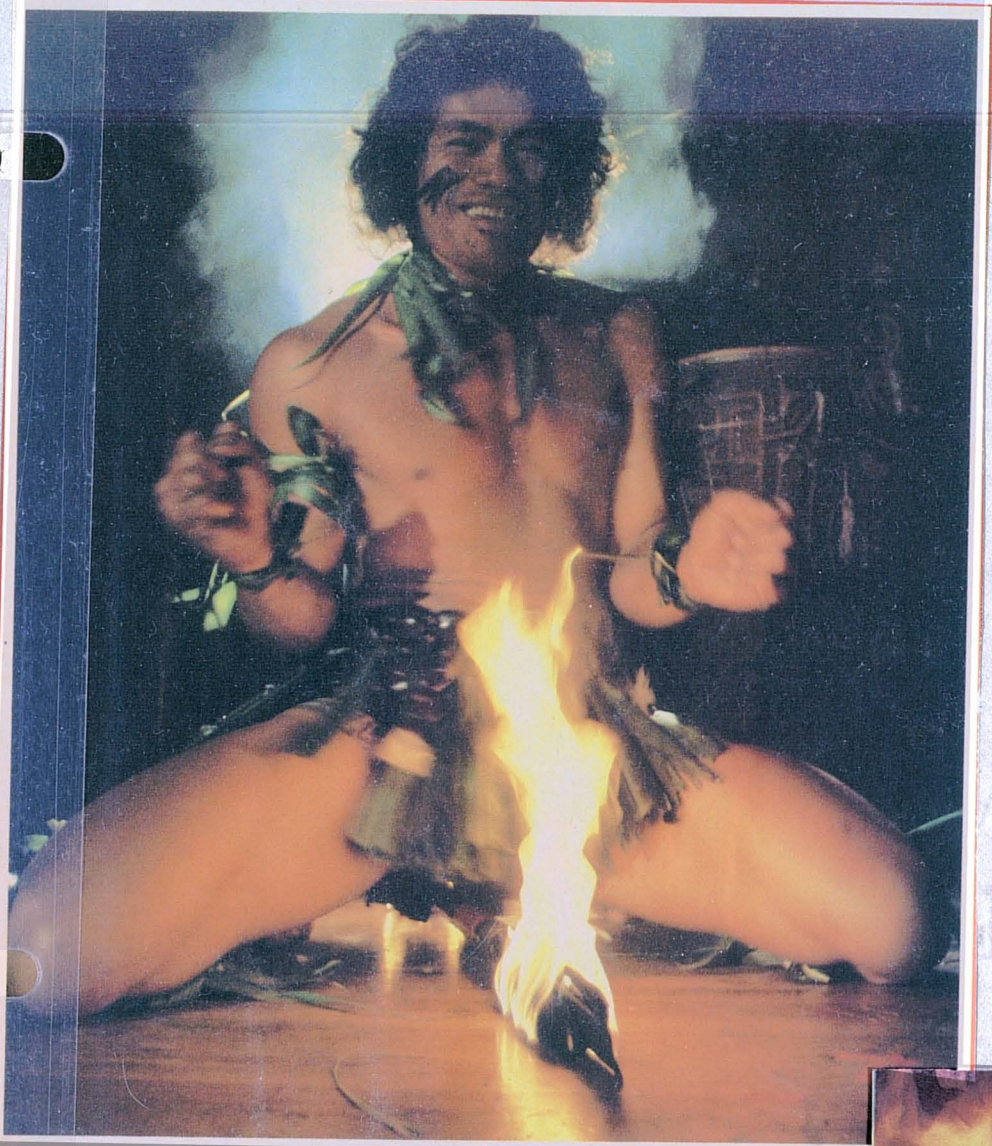
FREE

PICTURE
FORTY-SEVEN

107

esy of Spencecliff's Hawaiian Hut





PICTURE FORTY-EIGHT

Ad from Where Oahu.
November 13-19, 1982
Kalo's Polynesian Revue.

PICTURE FORTY-NINE

Ad from Guide to Oahu.
Nov. 29-Dec. 5, 1982.
Moana Hotel Polynesian Revue

MOANA HOTEL
Polynesian Revue
At The Banyan Court

"... in Hawaii's most famous setting."
"... the finest dancers in Polynesia."
"... the hottest show in town!"

Dinner buffet or cocktail seating.
6 and 8:30 p.m. nightly.
Showtimes 7
and 9:30 p.m.

Call 922-3111
for reservations.

Moana Hotel
SHERATON HOTELS & INNS, WORLDWIDE

OAHU, HAWAII

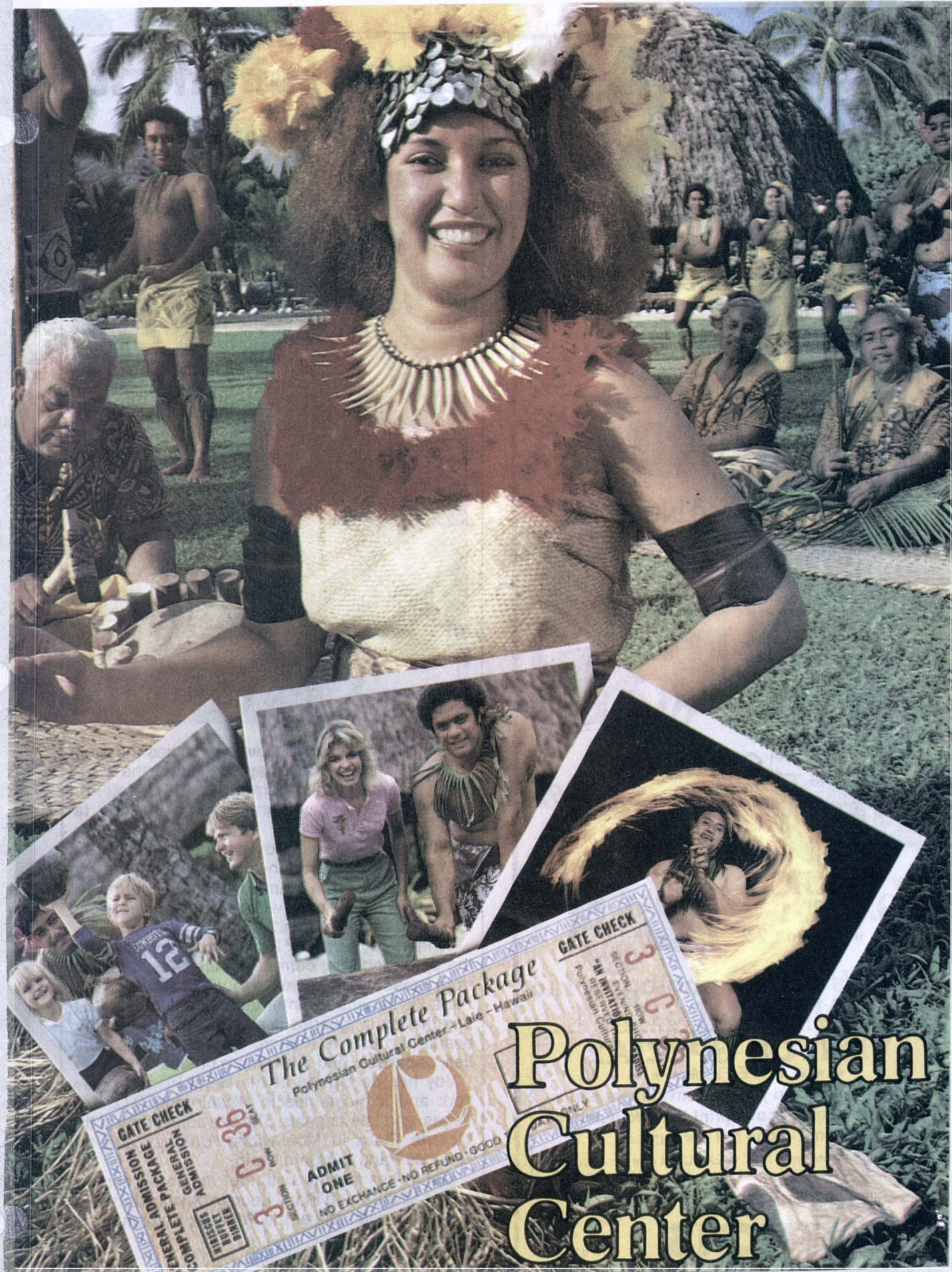
Polynesian Cultural Center



Hawaii's #1 Experience

PICTURE FIFTY

Brochure from Polynesian
Cultural Center



The Complete Package
Polynesian Cultural Center - Laie - Hawaii

GATE CHECK

ADMIT ONE
NO EXCHANGE • NO REFUND • GOOD

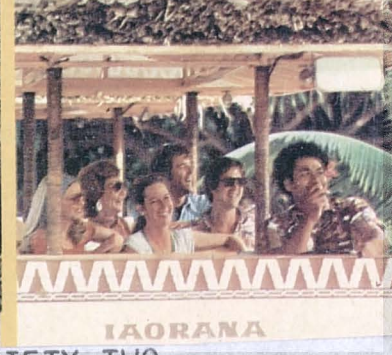
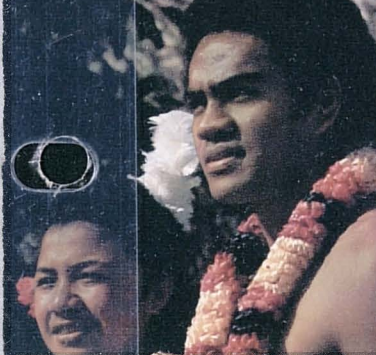
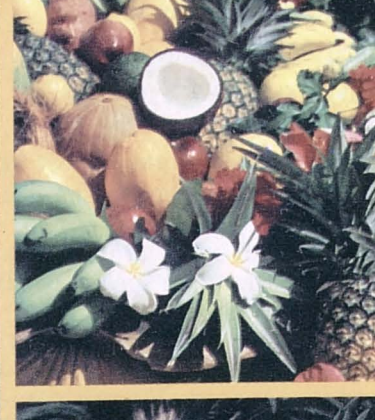
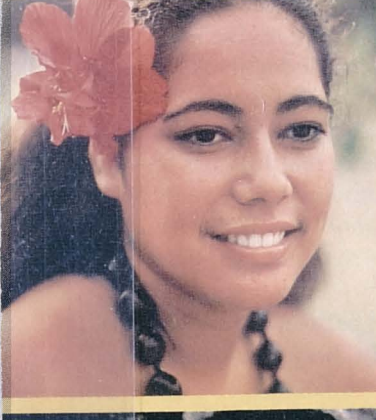
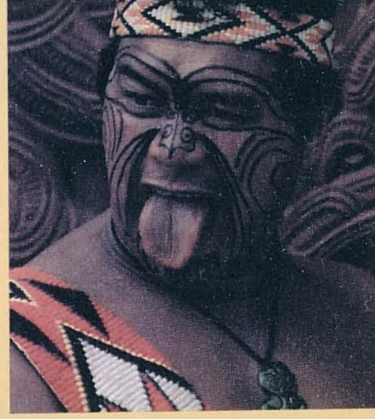
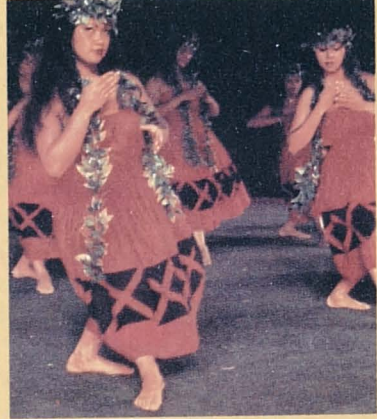
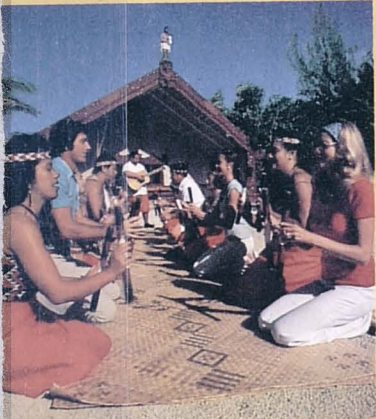
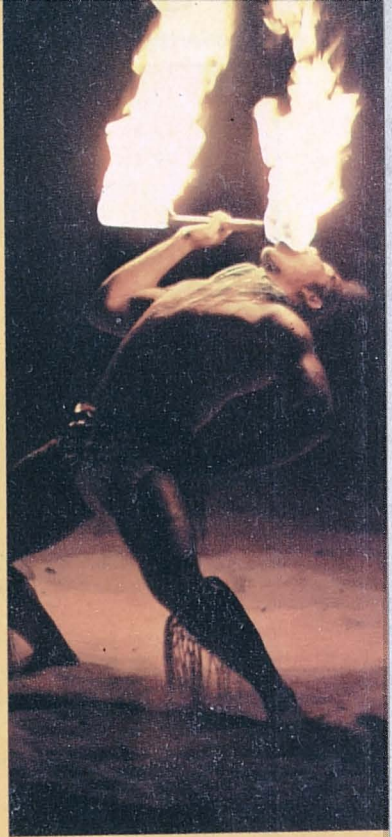
GENERAL ADMISSION
COMPLETE PACKAGE
GENERAL ADMISSION
GENERAL ADMISSION
GENERAL ADMISSION
GENERAL ADMISSION

ADULT \$36
CHILD \$18
INFANT \$9

SECTION 3
ROW 3
POLYNESIAN CULTURAL CENTER

Polynesian Cultural Center

PICTURE FIFTY-ONE



IAORANA