

Inside	
News	3
Features	5
Commentary	4
Comics	6
Sports	7,8

A Statement Game

“We beat Michigan State's rearend the last time they were here and we beat this team [Purdue]... To be quite honest, if Ohio State came right now, we'd probably beat them too.”

June Jones | UH head coach



Head coach June Jones talks to players after their emotional win against Purdue. The Warriors rallied from a 35-27 deficit to win the game 42-35.

CHRISTOPHER YEUNG
Ka Leo O Hawai‘i

UH fans help Warriors rally from 8-point deficit in 42-35 emotional victory

By Glendalyn Junio
Ke Leo Staff Reporter

With a home-field advantage comes the home-crowd advantage, and that can truly

make the difference in a game. Saturday night's wild contest at the Aloha Stadium against the Purdue Boilermakers (8-5) proved just that as a crowd of 44,298, the largest home crowd this season, watched the University of Hawai'i Warriors (10-2) rally to a 42-35 victory and their ninth consecutive win.

"The crowd won the game for us," said senior safety Leonard Peters.

With just under seven minutes left in the game, the stadium was overpowered by chants that remained in sync and the Warrior squad

was able to climb themselves out of an eight-point deficit.

"All great teams face adversity and we faced it tonight," said sophomore linebacker Adam Leonard. "We just really showed what we are made of [after] losing two games early in the season, a game just like this when we were down late and just couldn't convert."

Down 35-27, a combination of passes, including a 16-yard run by senior Reagan Mauia and a Boilermakers illegal substitution infraction, enabled the Warriors to score

the 5-yard touchdown and 2-point conversion passes to sophomore wide receiver Ryan Grice-Mullins, tying the game 35-35 with 4:40 left.

"When your number is called," Grice-Mullins said, "you have to step up and make a big play, and that's what the coaches, and the receiving core themselves, keep preaching ... That's what I did. My number was called, and I ran my route right and so did everyone else."

See Victory, page 7



ASHLEY BASTATAS • Ka Leo O Hawai‘i

Spring 2007 tuition payments are currently due on Dec. 15 at 4:00 p.m. The total cost for resident students taking 12 or more credits is \$2,261.20, while non-resident students must pay \$6,197.20. All payments can be done online with a credit card, by mail or in person at the University of Hawai'i at Mānoa Cashier's Office.

‘Affordable’ tuition due on Dec. 15

By Justin Hedani
Ka Leo News Senior Reporter

Students rushing to meet the deadline for Spring 2007 tuition payments two weeks from this Friday at the University of Hawai'i will be paying for one of the most affordable flagship universities in the nation, according to a report by the Education Trust.

Currently, the total cost for resident students taking 12 or more credits is \$2,261.20, while non-resident students must pay \$6,197.20. Tuition hikes approved by the Board of Regents are in effect for each aca-

ademic year – not per semester. This spring, students will be paying fees similar to that of Fall 2006.

Even with the proposed tuition hikes, UH was one of four flagship universities to receive a B grade in affordability for low-income and minority students, according to a report made by the Education Trust. None of the other flagship universities received an A grade.

The other three state universities to earn Bs were New Hampshire, New Mexico and Vermont.

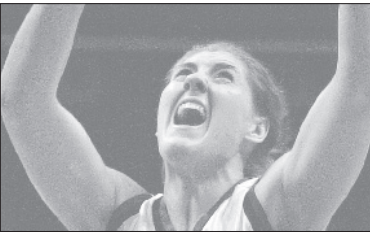
For the 2007-08 academic school year, tuition hikes will raise full-time, in-state tuitions to about \$2,600 per

semester and \$7,200 for full-time, out-of-state residents. In 2008-09, in-state student tuition will increase about another \$400, while out-of-state tuition will increase about \$1000.

In 2005, in-state students paid \$1,790.20 for their tuition, while out-of-state students paid \$5,030.20.

Payments for this upcoming semester are due no later than Dec. 15, 2006 at 4:00 p.m. Financial aid recipients are exempt from this deadline but must submit their payments by Jan. 17. Students are required to register for their Spring 2007 classes

See Tuition, page 3



Rainbow Wahine finishes third in Classics

Sports | Page 8



Bond prequel worthy of the legendary series

Features | Page 5

Tuition

From page 1

before they can submit payment. Students who do not pay by Dec. 15 must drop their registered classes, but have the chance to re-register from Jan. 3 – 17. Re-registration payments must be made by Jan. 17 at 4:00 p.m.

All payments can be done online with a credit card, by mail or in person at the University of Hawai'i at Mānoa Cashier's Office.

Hall residents who are paying for the academic year as a whole must pay their remaining balance by Jan. 17. Those who are paying for housing by the semester must submit their \$225 deposit by Dec. 15.

The Cashier's Office advises that students paying with credit or debit cards should check their spending limits, as some cards are declined. Most banks will loosen this restriction for a day upon request.

Students rally for UH rail

University groups support extra \$1B for extended route

Ka Leo News Desk

The City and County of Honolulu is moving forward on its plans to build a mass transit rail system to help alleviate city traffic, and several University of Hawai'i at Mānoa students and organizations are rallying to ensure that it serves the more than 26,000 daily commuters at UH.

The option favored by Mayor Mufi Hannemann stretches from East Kapolei to Ala Moana and would cost taxpayers an estimated \$3.6 billion, while an extended route connecting the UH West O'ahu and Mānoa campuses would raise the cost to about \$4.6 billion.

In the past, Hannemann justified the shortened route by claiming that there was not sufficient student concern voiced to justify the extra \$1 billion needed for the full route.

However, many UH students and organizations, including the Associated Students of the University of Hawai'i, the Sierra Club and 2020 Vision are determined to prove him wrong.

Yesterday, the organizations voiced their opinions at a public hearing at Radford High School. Here are some ways you can voice yours:

° Today to Dec. 4 – take a short survey for or against the rail at <http://www.sustainable-uh.hawaii.edu>. Results will be tabulated and given to the Honolulu City Council.

° Dec. 7 – meet by Campus Center TV at 9:15 a.m. for a round-trip bus ride to the City Council's final decision meeting for the mass transit proposal. Buses will return to UH by 11:30 a.m. Students wishing to give a one minute statement at the hearing should e-mail ASUH at asuh@hawaii.edu with their names, e-mail addresses and phone numbers as soon as possible.

° Today to Dec. 4 – sign a petition or write a testimony at the displays at the Hamilton and Sinclair Libraries, or e-mail your thoughts to ASUH. Petitions and testimony will be given to the City Council.



ASHLEY BASTATAS • KA LEO O HAWAII

Members of the ASUH, Sierra Club, and 2020 Vision encouraged those around the Campus Center canopy to sign a petition yesterday to bring the proposed mass transit system to UH. Faculty and students, such as freshman Miranda Li signed the petition from Henry Cheng and other volunteers.

KA LEO EDITORIAL POSITIONS OPEN

Managing Editor
Sports Editor
Associate Sports Editor
Commentary Editor
Associate Commentary Editor
Associate Features Editor
Senior News Reporters (formerly News Associates)
Design Director
Page Designers
Copy Editors

For more information or an application, please come to the Ka Leo building across from the ground level of the Bookstore or call 956-7043. Please submit a resume with your application.

Deadline: Tuesday, Dec. 5 at 4 p.m.

OurOpinion

New university scholarship divides us

Majority Opinion

Infrastructure needs to be first priority

The University of Hawaii'i will be offering a \$1,000 tuition waiver to every graduating senior in the state of Hawaii'i that earns a GPA of 3.8 or an 1800 SAT score and enrolls in the UH system. The scholarship is renewable (two years at community college, four years at the universities).

This new scholarship is being offered next year in celebration of UH's centennial and devalues current UH students from Hawaii'i high schools. Current UH students from Hawaii'i should also be given this opportunity to get help with their tuition.

By not offering an equivalent opportunity to current UH students the administration is sending a message that new students are more important than current students. If this were a one-time scholarship it would be less grating, but as a renewable scholarship, it means a possible savings of \$4,000 for students graduating from high school this spring. For seniors and even juniors, it isn't such a big deal; we paid a lower tuition these past 3 to 4 years at UH. But it is an unfair policy for freshmen and sophomores who are

The administration is sending a message that new students are more important than current students.

bearing almost the same financial burden as incoming students.

Not only does the new scholarship seem unfair to current students, this shouldn't be a priority. It will cost the university \$1 million next year to provide the estimated 1,000 students this scholarship. Because it is a renewable scholarship, every consecutive year an additional 1000 students will be added to the scholarship cost, which means another \$1 million. At its peak, this scholarship could cost UH \$5 million a year.

The administration should be using this money to fix our infrastructure and to meet our service needs.

In 2004 when the administration was proposing the tuition hike, Ka Leo O Hawaii'i reported that the administration wanted the tuition hike to reach national averages and to increase facilities and services to accommodate the 18 percent enrollment increase from 2000 – 2004.

Since then, Ka Leo has reported

a need to fund more advisory positions in the Arts & Sciences department (which is currently at a 500 to one ratio compared with the recommended 300 to one ratio), the need for more dormitories and new buildings to replace the crumbling ones that the Natural Science department uses. These expenses are only for the Mānoa campus; the other nine campuses in the UH system also require additional funds.

In addition to our infrastructure needs, the administration should be focused on the non-monetary needs of our system, instead of bribing graduating high school students to attend what is slowly becoming a second-rate institution.

Instead of money, UH should be working on allowing transfer system credits for its students, instead of making transfer students jump through hoops. UH should allow students that pay for a full-time load to take courses both at their home campus and at other system campuses. UH should also provide inter-system library transfers for free, like the state system does.

It may be a good idea to provide a scholarship to all high-achieving students, but this state institution cannot afford to pursue every good idea. If the students are the top priority of this institution, we need to be provided with first-class facilities and services.

Dissenting Opinion

Scholarship first step in the right direction

With Pell Grant money being cut at the federal level and tuition rising throughout the University of Hawaii'i system, the administration is taking a needed step in the right direction with the announcement of a new academic scholarship. State institutions need to take care of the students from their state. One way to do this is to offer academic scholarships to their high-achieving high school graduates.

Tuesday of last week, Ka Leo O Hawaii'i reported that a major concern for UH is the low graduation and retention rates on campus. By creating a renewable scholarship for high-achieving students, UH will not only attract, but also keep recent Hawaii'i graduates.

The Mānoa campus is working hard to make our centennial year truly the "year of the student." The administration created the Star Degree Audit System to help students keep track of their academic progress. Also, as noted in Tuesday's article, Mānoa has instituted mandatory advising, early declaration of majors, and access to advisors and

The administration is taking a needed step in the right direction with the announcement of a new academic scholarship.

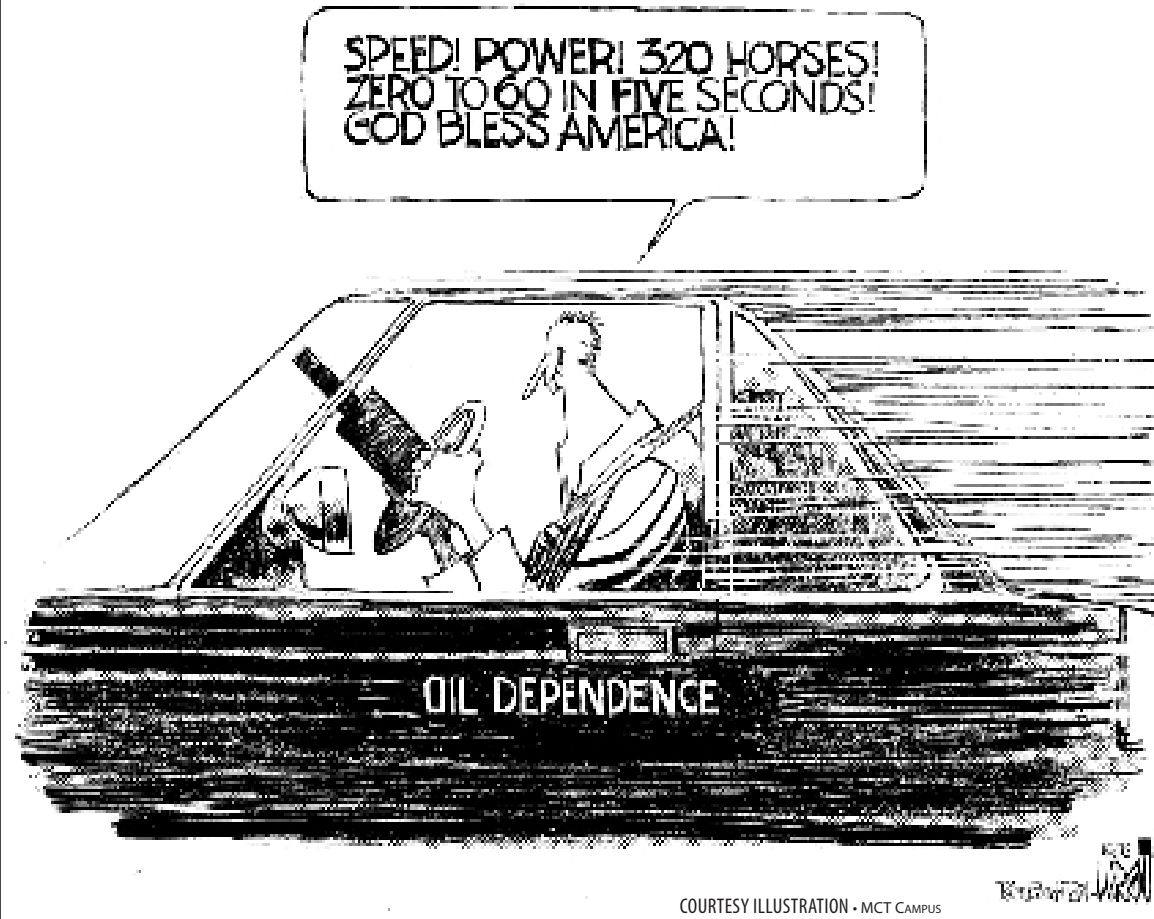
faculty to talk about majors.

In addition, last spring, the Hawaii'i State Legislature voted to approve the hiring of eight new Arts & Sciences advisors and next fall. UH will also be offering a sustainability designation. Mānoa plans to open a new dorm in Fall 2008 where Frear Hall stood, which will house 800 students.

UH needs to continue on this path of improvement. In the future, administrators could offer more need-based tuition waivers and Board of Regent scholarships to support the students from Hawaii'i, or find other ways to provide for students to stay in their homestate. As long as UH is focused on providing students the means to have an education, it is fulfilling its promise that students come first.

The Editorial Board is comprised of all Ka Leo O Hawaii'i desk editors, the Managing Editor and the Editor in Chief.

EditorialCartoon



COURTESY ILLUSTRATION - MCT CAMPUS

Letters to the Editor

Congrats goes to the Warriors

Let the record show that on Nov. 25, 2006 the Hawaii'i Warriors answered the call and left no doubt that it is a big time NCAA football program. Together we give thanks for a seminal 42-35 victory over the Purdue Boilermakers.

Warrior fans have enjoyed an exciting and talented team that played a rigorous schedule and

accomplished a lot this season.

Congratulations to June Jones and all the Warrior players on a successful season and kudos to Hawaii'i Telecom for letting us mainlanders watch these games on the continent. Nō ka 'oi.

Steve Petzold
Santa Clarita, CA

Letters to the Editor

SUBMISSION POLICY

Ka Leo O Hawaii'i welcomes letters to the editor on any subject. Letters are given priority on the basis of importance to the University of Hawaii'i at Mānoa system and its surrounding communities.

All letters must be accompanied by the author's true name, e-mail address and daytime telephone number. Letters should address a single subject and should be no longer than 500 words. Letters of any length are subject to trimming and editing.

All letters and articles submitted to Ka Leo O Hawaii'i may be published or distributed in print, online and other forms.

E-mail: editorials@kaleo.org

Fax: (808) 956-9962

Mail: Letters to the Editor
Ka Leo O Hawaii'i
1755 Pope Rd. #31-D
Honolulu, HI, 96822

KA LEO O HAWAII

the voice of hawaii

The Ka Leo Building
University of Hawaii'i at Mānoa
1755 Pope Road 31-D
Honolulu, HI 96822

Newsroom: (808) 956-7043
Advertising: (808) 956-7043
Facsimile: (808) 956-9962
E-mail: kaleo@kaleo.org
Web site: www.kaleo.org

Ka Leo O Hawaii'i is the campus newspaper of the University of Hawaii'i at Mānoa. It is published by the Board of Publications four times a week except on holidays and during exam periods. Circulation is 14,000. Ka Leo is also published once a week during summer sessions with a circulation of 10,000. Ka Leo is funded by student fees and advertising. Its editorial content reflects only the views of its editors, writers, columnists and contributors, who are solely responsible for its content. No material that appears in Ka Leo may be reprinted or republished in any medium without permission. The first newsstand copy is free; for additional copies, please come to the Ka Leo Building. Subscription rates are \$36 for one semester and \$54 for one year.
© 2006 Ka Leo O Hawaii'i

Editor in Chief Danielle Flud
Managing Editor Michelle White
News Editor Matthew K. Ing
Features Editor Alyssa Navares
Associate Features Editor David Pham
Commentary Editor Kimberly Shigeoka
Associate Commentary Editor Justin Hahn

EDITORIAL

Sports Editor Keane Santos
Associate Sports Editor Scott Alonso
Chief Copy Editor Claire Withycombe
Associate Copy Editor Candice Novak
Photo Editor Chris Yeung
Comics Editor Casey Ishitani
Design Director Joe Guinto

ADVERTISING

Advertising Director Edgar Lobachevskiy

EVENTS

CALENDAR

Please e-mail any campus or community events to calendar@kaleo.org.

“TAKE-5 with nature,” an exhibition expressing plant forms by five artists, is on display through Thursday, Windward Community College, Gallery ‘Iolani. Info, 236-9155.

“9th annual mixed media minia- tures: small kine art, big kine heart;” an art exhibition, is on display through Dec. 16, Kapi‘olani Community College, Koa Gallery. Info, 734-9374.

“Using ultrasound as a teaching and research tool in second language acquisition,” a linguistics seminar, today, 12 to 1:15 p.m., St. John audi- torium, room 011. Ian Wilson from the University of Aizu and Bryan Gick from the University of British Columbia will present. Info, linguistics department, Nora, 956-8602, norayogi@hawaii.edu, <http://www.ling.hawaii.edu>.

“reVERSES,” a poetry reading, tonight, 8 to 10 p.m., The ARTS at Marks Garage. Admission: \$5. Info, 521-2903.

“Conditional instability and shear evolution in the landfalling hurri- canes,” a meteorology seminar, tomor- row, 3:30 to 5:30 p.m., Marine Science Building, room 100. Dale Unruh, Jr.; a graduate student at the meteorol- ogy department, will present. Info, meteorology department, 956-8775, metdept@hawaii.edu, <http://lumahai.soest.hawaii.edu>.

Auditions for the University of Hawai‘i at Mānoa winter com- mencement speaker are tomor- row, 4:30 to 6:30 p.m., Hemenway Theatre. Auditioning students must be an undergraduates graduating in December and have a minimum of a 3.0 grade point average to be eligible. To sign up, call 956-6145. Info, UH Mānoa chancellor’s office, Wendy Pearson, 956-6145, pearsonw@hawaii.edu, <http://www.manoa.hawaii.edu/com- mencement>.

“Sipping Jetstreams,” a movie, showing tomorrow. 6 p.m. pupus and info, movie at 8 p.m. The O Lounge. Donation: \$10. Proceeds will go to the Defend ‘Oahu Coalition and Surfrider Foundation. Info, 224-2626.

‘Casino Royale’ refreshes the Bond franchise

By Jordan Savusa
Ka Leo Contributing Writer

You can expect certain elements that make up a James Bond movie: high tech gadgets, impossible action scenes and beautiful, alluring women left and right.

The latest Bond film, “Casino Royale,” has all these ingredients and may be one of the best Bond films ever.

“Casino Royale” is a prequel to the legend of 007; how James Bond came to be. Bond has just gotten his second kill and has been recently promoted to Double-0 status in the British Secret Intelligence Service.

British actor Daniel Craig portrays the famous secret agent on his first mis- sion, when Bond had no high-tech gad- gets like an invisible car, or a ring that ultrasonically shatters glass, which were seen in the other movies. Instead, Bond has fighting skills and a handgun with a silencer, and his feats are even more spectacular, like jumping off skyscrap- ers and battling two dozen guards within an African embassy.

Craig also gave Bond more depth than the usually dangerous womanizer usually has.

“Bond is given a soul,” said University of Hawai‘i at Mānoa junior Dane Neves, a film studies major at the Academy for Creative Media. “He loves, he hurts, he fails, he conquers, he thinks.”

The previous Bond films usually show the chap as a charming ladies’ man who does his job without much feeling, but since Casino Royale is a prequel, the audience gets to see how Bond became the world’s greatest secret agent.

“Craig plays [Bond] as if he is on training wheels,” Neves said. “He’s not yet 100 percent confident, but by the end of the movie, he earns the right to intro- duce himself as ‘Bond, James Bond.’”

In this two-and-a-half-hour film,

Casino Royale

Also known as Bond 21

Released: Nov. 17

Summary: The story is a prequel to the legend of 007, explaining how he developed his love for beautiful women and martinis.

U.S. Box Office: \$40,833,156

Running Time: 2 hrs. 24 min.

MPAA Rating: PG-13 for intense violent action, sexual content and nudity.

Filming Locations:

Pinewood Studios, London
Prague, Czech Republic
Italy
Bahamas

Actors:

Daniel Craig (James Bond)
Mads Mikkelsen (Le Chiffre)
Eva Green (Vesper Lynd)
Jeffrey Wright (Felix Leiter)

Bond uncovers a terrorist scheme and Le Chiffe, a skillful and devious banker who handles the money of terrorists all over the world. Not everyone in British Intelligence is warm to the new agent, so their eyes are all on Bond.

The movie will probably be known for the heads-up poker game between Bond and the Le Chiffe, played by Danish actor Mads Mikkelsen.

The audience knows what will happen with staredowns across the green table and attempted poisonings. Even the clichés within the franchise history have been a little tweaked. For instance, when the bartender asks Bond if he wants his vodka martini shaken or stirred, Bond sternly replies, “Do I look like a man who gives a damn?”

And yes, like all the other films, Bond gets the girl, Vesper Lynd, who is something of a spunky accountant in



PHOTO COURTESY OF ROTTEN TOMATOES

Italian actress Caterina Murino plays James Bond’s lover in “Casino Royale.”

British Intelligence and adventure com- panion to Bond. Lynd is played by Eva Green, a beautiful brunette who pulls off being innocent and feisty, like a Bond girl should be.

The director of Casino Royale, Martin Campbell, also directed the 1995 Bond Flick “Goldeneye.”

“Casino Royale” is based loosely on a 1953 novel by Ian Fleming. It was also made into a Bond parody movie in 1967, starring Peter Sellers, better known as Inspector Jean Clousseau in the The Pink Panther Series. But besides the plot and Bond, these two movies really have nothing in common.

The movie came out Nov. 17 across the United States. The grand total at the U.S. box office was about \$41 million. It is rated PG-13 for an intense series of violent action, sexual content, nudity and a torture scene. So if you’ve got two and a half hours to get shaken or stirred, go see Casino Royale. The movie is good. Very good.



PHOTO COURTESY OF ROTTEN TOMATOES

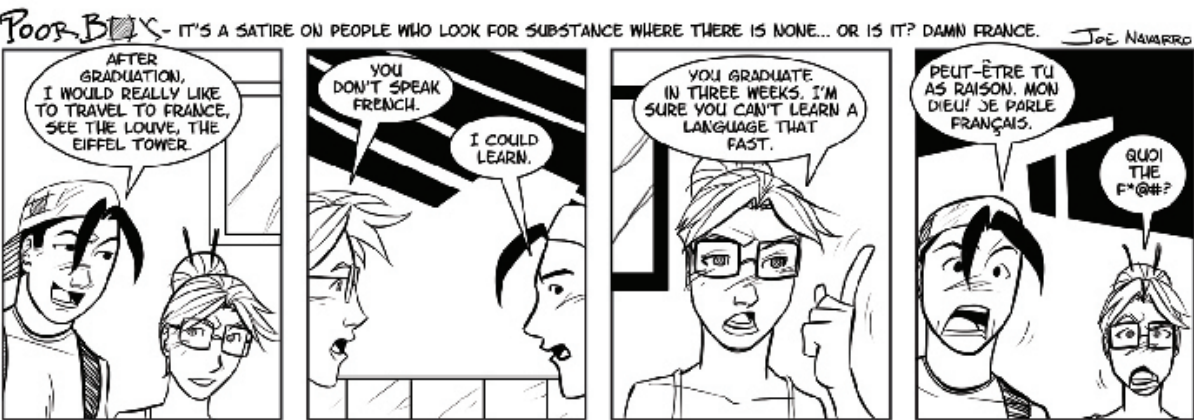
The movie earned more than \$40 million in the U.S. box office.

KA LEO O HAWAII

COMICS & CROSSWORD

Page 6 | Tuesday, November 28, 2006

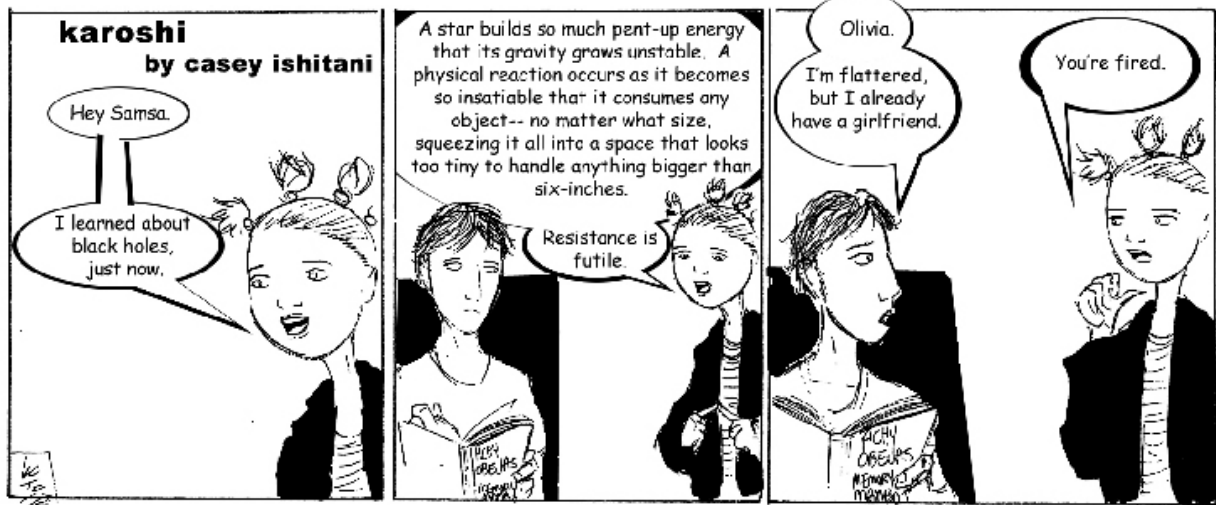
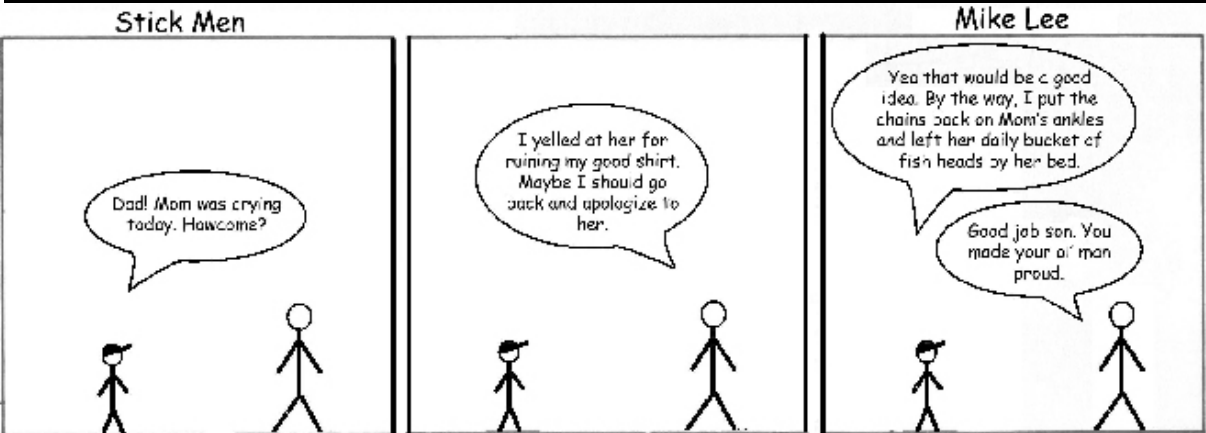
Comics Editor: Casey Ishitani | (808) 956-7043 | comics@kaleo.org



Coffee Talk

By Cynthia McCoy

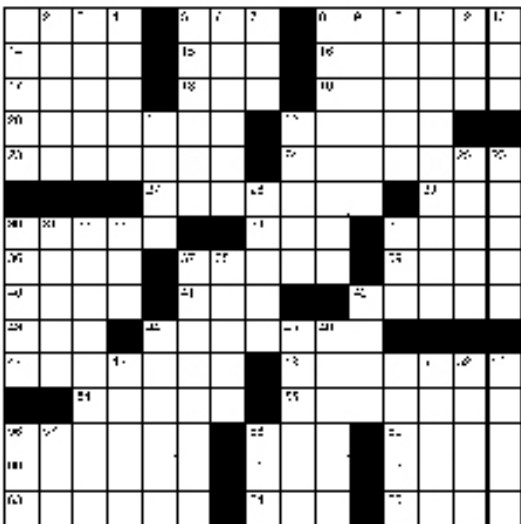
Did you hear about Michael Richards from "Seinfeld" and his racist ranting?



Crossword

- ACROSS
- Links between phrases
 - Service charge
 - Tech's cousin
 - A.k.a. author
 - Party in power
 - On the air
 - Capitol
 - Stout
 - Have dinner
 - die
 - Gongoli
 - Mountain goat
 - celebrity, e.g.
 - Self-dignifying individual
 - Banks do
 - Go away
 - Attractive boats
 - Falsely
 - Sensationalist leader
 - Polish lake
 - Surprise attacks
 - His divine ceremony
 - Asia's stress
 - Lamb's trim
 - On the sheepishly
 - Double bend
 - Bar-code reader
 - Hornet leader
 - Gallium dance
 - Early evening
 - Hand plant?
 - African antelope
 - Tease
 - Ten's topser
 - Play an imaginary card
 - McAfee or Conger
 - Take care of
 - Creed's slogan
 - Mind or school leader
 - Iranian

- DOWN
- Dad and invalid
 - Navy's soul
 - Boat in
 - Mine
 - passageway
 - vehement anger
 - Tech's cousin
 - Winter in NY
 - Swiss bank syrup
 - Immediately
 - Broadway platform
 - Service entry
 - Do: indubitable
 - Inhabitant
 - What we have
 - Swift
 - Furious
 - Self-religious beliefs
 - Foreigner
 - Magnificent
 - Jealous
 - Blind up
 - Direct from the original source
 - Outgoing person
 - Skirted
 - Suspended
 - Not in the dark
 - Made a



© 2006 Tribune Media Services Inc. All rights reserved.

11/28/06

Solutions 11/22/06



LOOKING FOR A PLACE TO HELP YOU
DEVELOP
AS A JOURNALIST?

SUBMIT TO
Ka Leo O Hawaii



KA LEO O HAWAII CLASSIFIEDS

The Ka Leo Building
(across from the UH Bookstore lower entrance)
Monday-Friday 8a.m.-4:30 p.m.

Rates: \$1.25 per line (minimum 3 lines). All caps and/or bold will add 25% to the cost of the ad. Place an ad in four (4) consecutive issues and receive the fourth ad free!

Deadline: 3 p.m. the day before publication.

Payment: Pre-payment required. Cash, in-state checks, money orders, Visa and MasterCard accepted.

In Person: Stop by the Ka Leo Building.

Phone: 956-7043 E-Mail: classifieds@kaleo.org

Fax: 956-9962. Include ad text, classification, run dates and charge card information.

Mail: Send ad text, classification, run dates and payment to: Board of Publications, Attn: Classifieds P.O. Box 11674, Honolulu, HI 96828-0674

Victory

From page 1

With only a minute left on the clock, Purdue had a chance to regain their lead, but their plans were spoiled by the enduring UH defensive squad, provoked by chants loud enough to literally shake the stadium.

“I can’t thank the people enough for coming,” said head coach June Jones, “because I really felt that they were the difference in the game. At the end when [Purdue] was trying to score, the crowd was so loud it really just rallied up our guys.”

The outcome was immediately sealed after an interception by Leonard with :53 left in that contest.

“It’s awesome to get [an interception] under my belt,” Leonard said. “[It was] the first one in my career and hopefully I could get more.”

The Warriors keep hold of their top-25 ranking in the national polls for another week. They are now ranked 24th in the nation according to the Associated Press Top 25 Poll and ranked 23rd under the USA Today Top 25 Coaches Poll, released Sunday morning.

Despite UH junior quarterback Colt Brennan’s rare 50 percent throwing average by mid third quarter, Brennan threw three fourth quarter touchdowns to win the game. Brennan completed 33 of 48 passes for 434 yards. He has accumulated 51 touchdowns this season, three shy of the NCAA single-season record set by Houston’s David Klingler in 1990. Brennan surpassed the school record for the single-season touchdowns, set by Timmy Chang in 2002 in a 15-yard pass to senior wide receiver Chad Mock early in the first quarter.

Early in the game, the Warriors’ first half 17-0 lead from two rushing touchdowns by senior Nate Ilaoa seemed to be the resurgence of another cruising win, but the Boilermakers’ intensity never seemed to cease.

Ilaoa added 159 yards on 12 carries, his career high, to the Warriors’ 653 total offensive yards. Ilaoa also took in seven passes for 53 yards.

At the start of the second half, momentum was reversed to the Boilermakers following a fumble forced by Purdue Justin Scott on Ilaoa, one of Ilaoa’s two fumbles. Al Royal recovered and tipped off the Boilermakers’ run to a 9-yard touchdown by wide receiver Dustin Keller, their first.

The Warriors were burdened with turnovers and penalties, amassing two



PETERS

“For some reason, we didn’t feel like [Purdue] had any respect for us this week; they talked about not coming down because they weren’t making any money and that it was too far. But you know, our closest [road] game is like five hours away and we don’t complain. It’s just what we have to do because we live on an island ... A lot of their players and coaches were taunting us before the game. So we took it upon ourselves and we came in to tell everybody ‘Let’s do it.’ In the first quarter, we shut them up, and it shows how much heart our team has to fight through adversity – you know, being down for the first time at home, to fight through it. It’s a feeling we’re not used to and our guys battled through it.”
-Leonard Peters on the game and some of the opposing team’s comments.

Vote for Colt!

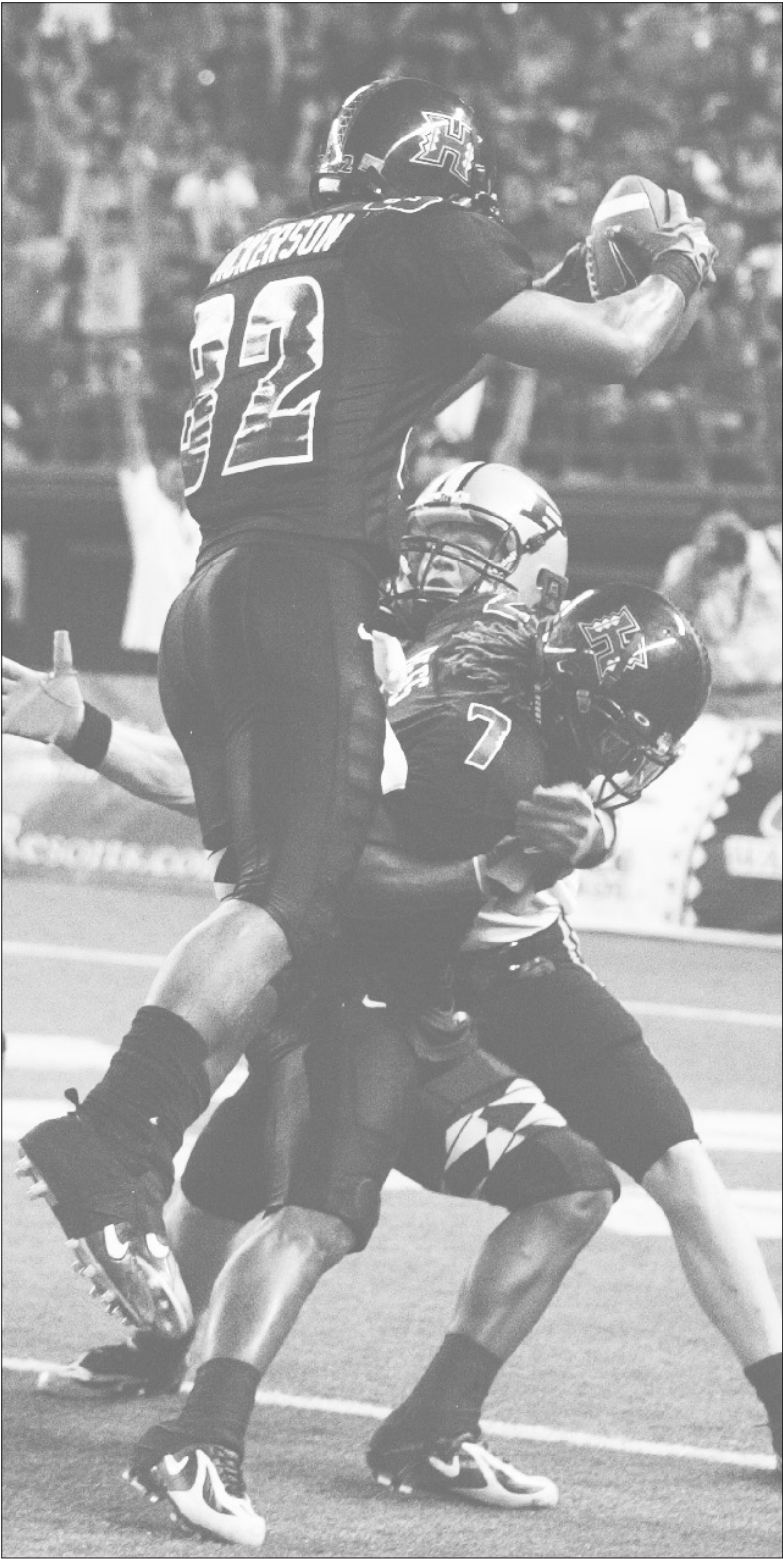
For the past few weeks, Hawai’i quarterback Colt Brennan has earned national acclaim and mention in the Heisman Trophy Race. Brennan is fourth in ESPN’s Heisman voting. Fans can also vote on the Web site, log on to ESPN.com go to college football, then Heisman Watch, to vote for Brennan or your favorite candidate.

fumbles, four penalties for loss of 37 yards, and one intercepted pass. In the second half, three turnovers led to three Purdue touchdowns.

“I think a lot of the pressure came from me coughing the ball out in crucial situations,” Ilaoa said. “And I think that led to the game being a lot closer than we would have liked it. But it’s just great to have a great defense and then have the offense move the ball and score.”

With 2:27 left in the game, an interception by junior Gerard Lewis set up Hawaii’s winning drive. Senior wide receiver Ian Sample took in the ball in a short pass by Brennan and 25-yard run to give the Warriors the lead.

Hawai’i faces Oregon State this Saturday at the Aloha Stadium and then in the Dec. 24 Hawai’i Bowl. This Saturday’s game is set to start at 7:05 p.m. The game will be televised live on ESPN.



CHRISTOPHER YEUNG • KA LEO O HAWAI’I

Hawaii's Ross Dickerson leaps over Purdue's Royce Adams for a touchdown in the 4th quarter which put Hawai’i ahead 27-21.

Rainbow Wahine set for NCAA tournament in California

Ka Leo Sports Desk

The No. 12 University of Hawai’i Rainbow Wahine volleyball team will head to Long Beach, Calif., for the National Collegiate Athletic Association (NCAA) Tournament first and second rounds, hosted by former Big West Conference rival Long Beach State. Hawai’i, the No. 12 seed in the tournament, will face Oregon in the first round on Dec. 1, at 5 p.m. (3 p.m. HST)

The Rainbow Wahine (26-5) earned the automatic bid to the NCAA Tournament by winning the Western Athletic Conference Tournament in Reno, Nev., this past weekend. UH’s first round opponent, Oregon (17-11), finished sixth in the Pac-10.

Hawai’i has faced the Ducks seven times in program history, holding a 6-1 edge. Oregon’s one victory came in the first round of the NCAA Tournament in 1984, one of UH’s two first round losses in program history. The last time the two teams faced each other was in 2000, when the Rainbow Wahine swept the Ducks.

UH has a long history with the other two teams in the Long Beach first and second rounds. Host Long Beach State was UH’s long-time rival when the two teams played in the Big West. Hawai’i holds a 22-15-1 lead in the series but are 1-5 in NCAA Tournament play. UH won the last meeting with the Beach, winning a thrilling five-game match in the NCAA Regional in 2000. Hawai’i and Pepperdine met twice at the start of the 2006 season with the Rainbow Wahine winning a pair of five-gamers. UH leads the all-time series with the Waves 24-3, including a 3-0 record in NCAA Tournament play.

In the other first round match in Long Beach, Calif., host Long Beach State (25-5), who took second in the Big West, plays Pepperdine (16-11), the second place team in the West Coast Conference.

‘Bows zip through ‘Zags for third

By Magdiel Vilchez

Ka Leo Staff Reporter

For the second straight year in a row, the Rainbow Wahine grabbed a third place finish in the Hawaiian Airlines Rainbow Wahine Classic Tournament.

The University of Hawai'i Rainbow Wahine basketball team improved to 3-2 by zooming through the Gonzaga University Bulldogs 68-57 at the Stan Sheriff Center Sunday afternoon.

Hawai'i got off to a quick start on and off the dribble. The 'Bows kept the Zags from scoring a bucket for nine minutes before the Zags dropped a free throw. Meanwhile, the 'Bows took full advantage of the Lady Bulldogs' slow start by dominating the inside. Senior co-captain Brittany Grice scored 13 of her 18 points in the first half. The Rainbow Wahine pounded the inside to grab a 31-19 lead at the half.

"Our biggest weakness is our defense," said University of Hawai'i head coach Jim Bolla. "We're not playing defense the way we're capable of."

The Rainbow Wahine outrebounded Gonzaga 48-28 in the game and also out rebounded the University of Arkansas 48-36 in their second-round 70-56 loss to the Razorbacks the day before. UH newcomer Iwona Zagrobelna showed just how versatile the 'Bows could be. The 6'4" Wroclaw, Poland native buried a three-pointer to give the Rainbow Wahine an impressive 52-31 lead in the second half.

"Everyone can fill in the position," said UH guard Janevia Taylor. "We just got lazy."

The Zags finally answered back with a 10-0 scoring run to cut the deficit to a reasonable 11 points. Unfortunately for the Zags, Hawai'i was not ready to lose another game. The Rainbow Wahine racked up another 20 point lead and though Gonzaga scored 12 of the final 15 points of the game, the damage had already been done.

"We stayed together as a team and we knew what we had to do," said co-captain Pam Tambini. "We played as



Hawai'i Rainbow Wahine guard Janevia Taylor keeps the ball away from the Gonzaga Bulldogs defense in a basketball game on Sunday, Nov 26 in Honolulu. The Rainbow Wahine defeated the Bulldogs 68-57.

JORDAN MURPH
KA LEO O HAWAI'I

a team and we made sure things from practice carried over to the game."

Grice and Tambini both finished with double-doubles of 18 points and 11 rebounds and 18 points and 10 rebounds respectively. The Bulldogs' Stephanie Hawk led all scorers with 21 points.

Though the Saturday loss to Arkansas denied the 'Bows a shot at the No. 2 ranked University of North Carolina Tar Heels, the Rainbow Wahine kept their heads high.

"We got to play some tough teams so it was good for us," Grice said. "I think we proved ourselves even though we could have played better. I still feel fortunate to play these teams."

Playing in the title round, the No.

2 UNC Tar Heels defeated the Arkansas Razorbacks with another convincing victory of 94-69 for first place. UNC had three players, including Tournament MVP Erlana Larkins, on the all-tournament team. Hawaii's Janevia Taylor was the 'Bows lone representative.

In the fifth place game, the No. 21 University of California at Los Angeles Bruins were upset again, this time by Texas Tech in a 75-60 loss to the Lady Raiders. The Bruins were upset in the first round by the Gonzaga but grabbed a win over Sacramento State University.

In the 7th place game, the Denver Pioneers gave Sacramento State their third loss with a 60-31 win.

Rainbow Wahine survive tussle with Texas Tech

By Magdiel Vilchez

Ka Leo Staff Reporter

After walking onto a field of giants, the undersized University of Hawai'i Rainbow Wahine women's basketball team gave a sigh of relief. They survived their encounter with the taller Texas Tech University squad.

The Rainbow Wahine handed the Lady Raiders their first loss of the season with a 57-54 nail-biter for the first round of the 28th Annual Hawaiian Airlines Rainbow Wahine Classic at the Stan Sheriff Center Friday night. The starting Rainbow Wahine guards were a combined eight inches shorter than the Lady Raiders' six-foot guards, but size did little to hinder the 'Bows performance.

"We tried to use our speed against them," said senior guard Janevia Taylor. "A lot of times we just pushed it up the floor, looking for whatever was open. We kept moving side-to-side so that they couldn't use their size advantage."

The hot hand of senior co-captain Pam Tambini, who scored eight early points, including two three-pointers, gave the Rainbow Wahine an early 12-8 lead. Taylor followed suit, nailing two treys of her own to boost the 'Bow lead to 20-13 with 9:41 ticks left in the first half. With 1:02 on the clock, the 'Bows grabbed their largest lead of the half after forward Tanya Smith converted a free-throw shot to give Hawai'i an 11-point advantage.

"Texas Tech stepped it up," Tambini said. "And we knew they were going to."

Knowing that the Lady Raiders had an ace up their sleeve, the 'Bows attempted to stymie a second half Tech surge with an ace of their own. Junior guard Saundra Cariaga nailed eight quick points, including a three-pointer that gave Hawai'i its biggest lead of the night at 42-28. However, the Lady Raiders brought out the Rainbow Wahine's kryptonite, the full court press, and chipped away at Hawaii's lead.

The Lady Raiders kept the 'Bows from inbounding the ball and crossing half-court, forcing five Hawai'i turnovers and riding a 13-0 scoring run. With 4:04 left in the game, a pair of free-throws by Tech's Alesha Robertson narrowed the Hawai'i lead to a single point.

"The second half, it's always the press," Taylor said. "It kind of wows us when we first start. But

once we get into our press break offense, we can get back in the game."

The Rainbow Wahine answered back with a layup, a steal, and a free-throw shot to give the 'Bows a little breathing room with 2:50 left and a four point 53-49 Hawai'i lead. However, before the 'Bows could catch their breath again, Tech guard Jordana Murphree nailed a three-pointer to bring it back to a one-point margin at 53-52. With time running down and the momentum shifting toward Texas Tech, Taylor took on a leadership position to keep the 'Bow's spirits up.

"It got down to one, so I just told [the team] to calm down," Taylor said. "Let's execute the offense. Our offense worked, just calm down, run our press break and run our offense and things will happen for us."

Taylor's two free-throws gave the 'Bows a three-point advantage at 55-52, but the Lady Raiders still had plenty of fight left in them. The Lady Raiders focused on fouling Tambini, who had shot poorly at the free-throw line during the game, in order make their last minute run.

"In the game," Tambini said, "I wasn't hitting my free-throws. That's why they fouled me. But you got to suck it up ... Make those free-throws, and you won't have to worry about them making that last-minute shot."

Tambini made her second free-throw shot after missing the first to put the 'Bows up 56-52. Texas Tech scored a quick layup before fouling Tambini again. Again, Tambini made one of two free-throws with nine seconds left, to put the 'Bows up 57-54. A final three-point attempt by Robertson rimmed out, and the rebound by Taylor sealed the Hawai'i victory.

"In the game you're playing against the clock," said UH head coach Jim Bolla. "We went to the foul line, they start going back and forth, like a chess match. We fought at the end and grabbed a couple when we needed it. [Texas Tech] is a good team, they're very athletic ... But we rose to the occasion when we needed to."

The 57-54 win over Texas Tech was Hawaii's first win over the Lady Raiders in their four meetings, dating back to 1985. Taylor led all-scorers with 17 points, followed by Tambini with 14 points. The 'Bows held the Lady Raiders to a dismal 27.7 percent field goal percentage in the game.