

Ke Kūkini

"The Messenger"

Newsletter of the University of Hawai'i at Mānoa Library

Number 7, Spring 2002

In This Issue

- ❁ *New University Librarian*
- ❁ *Hamilton Library Addition*
- ❁ *Hawai'i Voyager & Databases*
- ❁ *Library Web Site Redesigned*
- ❁ *Recent Gifts Received*
- ❁ *Ties with Okinawa Renewed*
- ❁ *New Preservation Facility*
- ❁ *Information Literacy Instruction*
- ❁ *In Memory*
- ❁ *Library Statistics & Grants*
- ❁ *Spotlight on Library Staff*
- ❁ *Supporting the Library*

New Subscriptions: EBSCOhost, ScienceDirect

The EBSCOhost database with abstracts from nearly 4,000 of the world's leading magazines and journals offers the full text of articles from more than 2,000 journals published worldwide.

ScienceDirect, a key resource for scientific, technical and medical information, provides access to over 1,200 peer-reviewed academic journals, 30 million abstracts from scientific articles and links to articles from over 80 publishers.

Both databases are available to University of Hawai'i at Mānoa faculty, staff and students and are accessible from on- and off-campus. See the Library's web site for more information: <http://libweb.hawaii.edu/uhtmlib>.

Diane Perushek Appointed New University Librarian

Diane Perushek has been appointed University Librarian of the University of Hawai'i at Mānoa. She replaces John R. Haak, who retired in 2000 after directing the libraries for seventeen years.

Ms. Perushek was Assistant University Librarian for Collection Management at Northwestern University Library (1996-2001) where she guided all collections as well as some public and technical services functions and managed the \$8-million annual collections budget. She was also in charge of preservation and a number of digitization projects, and participated in several development initiatives, including a campaign to raise \$20 million in endowments for the collections. Earlier, she was Associate Dean for Collection Services at University of Tennessee Libraries (1989-96), Curator of the Gest Oriental Library and East Asian Collections at Princeton University (1982-89) and Curator of the Wason Collection at Cornell University (1978-81). Perushek was deeply involved in the Research Libraries Group's East Asian Studies Group, whose Chinese Rare Book Cataloging Project she helped launch.

She earned the Master of Arts in Library Science (Michigan) and Asian Studies (Columbia), and completed Ph.D. coursework in Chinese Studies at Princeton University. She received the Fulbright-Hays Doctoral Dissertation Grant, National Defense Foreign Language Grant and National Defense Education Act Grant and participated in the Junior Year Program at the East-West Center.

Ms. Perushek's professional contributions are extensive. She served as rapporteur and proceedings editor, Council on Library and Information Resources/United Board for Christian Higher Education in Asia's "Sino-U.S. Symposium on Library & Information Science Education in the Digital Age" held in Wuhan, China in 2000. She was a member of the Mellon Foundation's task force on its Latin American library programs and is a member of the University Microfilms International Advisory Board.

She chairs the American Library Association's Publisher Vendor Library Relations Committee and serves on the Association of College and Research Libraries' Budget and Finance Committee. Previously, she chaired the Association of College and Research Libraries' Asian and African Section Nominating Committee and the Association for Library Collections and Technical Services' Collection Management and Development Section.

Ms. Perushek is a member of the American Library Association, Association for Asian Studies, Council of East Asian Libraries and the Modern Language Association. She has authored numerous papers on library and Asian studies topics.

The Library is very pleased to welcome Diane Perushek as its tenth director. She may be reached by telephone at (808) 956-7205 or by email at perushek@hawaii.edu. Her mailing address is University of Hawai'i at Mānoa Library, 2550 McCarthy Mall, Honolulu, HI 96822.



Addition Highlights

When finalized in Fall 2002...

81,625 usable square feet on 6 floors.



37% increase in Hamilton Library's area,
to 304,890 square feet.



81,567 linear feet of
Science & Technology Collection shelving.



11,175 linear feet of
Archives & Special Collections shelving.



Reference service desks for
Science & Technology and
Archives & Special Collections.



241 seats at individual workstations and
tables, and in group study rooms.



50 personal computers for patron use;
187 additional access points for laptops.



Reading rooms, conference room,
classroom, preservation laboratory.



New Computers in Hamilton Addition

Hamilton Library Addition and Renovation

Jean Ehrhorn, Interim University Librarian, 2000-2001

In Hamilton Library's 30 years, there have been many changes in collections and services. The ways in which library faculty and staff fulfill the Library's mission by gathering, preserving, organizing and helping people use the recorded knowledge in the collections, and facilitating access to resources beyond the Library's walls, have evolved with changes in the information environment. Use of library space has changed as the times have changed.

The completion of the Addition, also known as Phase III, in 2001 has been a major step in this evolutionary process. Now, the older parts of Hamilton (Phases I and II) are being renovated, a major undertaking that will be completed in Fall 2002. Until then, the Addition is being used as "surge space" to accommodate whole departments, services and collections displaced by the ongoing renovations. Even the front door has moved from McCarthy Mall to Maile Way.



Hamilton Addition

The departments for which the new Addition was planned won't move in until mid-2002, with one exception, the Preservation Department, which is already on the fifth floor. (See page 5.) With a total of over 300,000 square feet of usable space – almost six football fields – Hamilton is now among the largest buildings on campus, if not the largest.

Achieving and maintaining a successfully functioning library of this size, built in three phases over many years, requires intricate planning and a tremendous effort of coordination. Many people have been involved: architects, engineers, contractors, campus planners, faculty and staff. For the Library, the key people were the late Joyce Watson, who coordinated the Library's Addition planning activities from 1990 to 2001 (see page 7), and Carol Schaafsma, who coordinated the relocation of staff during the renovation of Phases I/II.

Architects: Matsushita, Saito & Associates, Inc.; Contractor: Albert C. Kobayashi, Inc.; Engineers: Imata & Associates, Inc. (Civil), NTW Associates, Inc. (Structural), Miles Onishi & Associates, Inc. (Mechanical), Nakayama, Oyama & Associates, Inc. (Electrical).

Hawai'i Voyager, New Gateway to Information Resources

On January 8, 2001, the University of Hawai'i System libraries launched a new Web gateway, Hawai'i Voyager, that provides access to the online catalog, patron account information and Internet sites through Web browsers. Hawai'i Voyager contains the bibliographic records of all UH System libraries in a single database. Other participants in Hawai'i Voyager include Bishop Museum Library and Archives, Hawai'i Medical Library and Hawai'i State Archives.

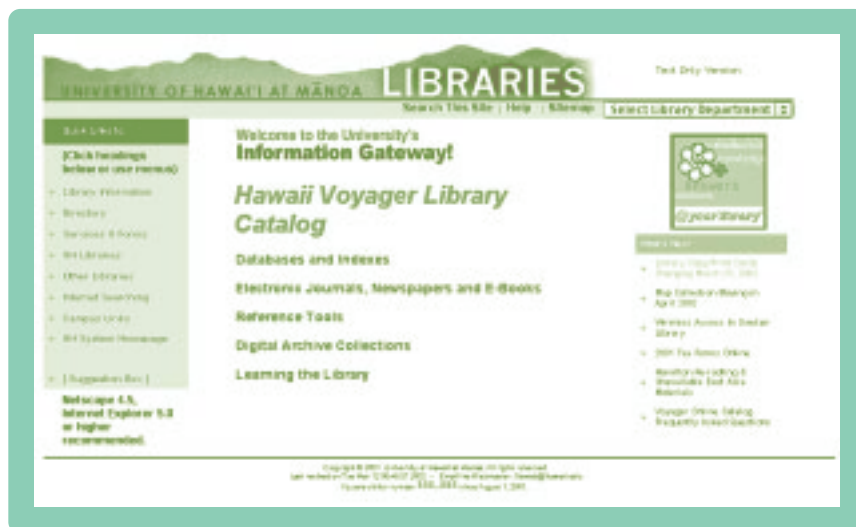
Selection of the Voyager integrated library management system software produced by Endeavor Information Systems, Inc. followed a two-year investigation of library systems being used in North American libraries. Almost 100 library faculty and staff from all UH campuses attended vendor demonstrations and participated in a detailed evaluation of the features offered by three finalist contenders. A steering committee coordinated this massive effort and selected Voyager as the "best fit" for the needs of the University of Hawai'i.

Voyager incorporates software for a variety of library operations: acquisitions, serials management, imaging, cataloging, circulation of materials, media booking, reserves, renewals, holds, interlibrary loans and patron account information, as well as catalog searching.

Catalog users can access their account information to see what items they have checked out, if they owe any fees, and may renew books and cancel holds as well.

The catalog supports any level of searching desired, from simple to complex. In a Basic Search you can quickly find items by title, author, journal title, subject heading, call number, or keywords simply by typing a word and choosing a search type from a short list. In a Guided Search, drop-down menus guide you through the construction of a keyword search that can be as complex as you require. In a Reserves Search, you can find materials on reserve for courses by searching the instructor's name, the campus or the course number. The display of search results shows which campuses own copies and whether they are checked out. Search results can be printed, saved or emailed.

Library Web Site Redesigned for Ease of Use



The redesigned Library web site provides access to the catalog, licensed and free databases, electronic journals, digital collections, service forms and much more. The What's New! section provides current news about the Libraries. (<http://libweb.hawaii.edu/uhtmlib/index.htm>)

Hawai'i Voyager Databases

The Libraries of the University of Hawai'i Database describes more than 3,000,000 holdings of books, periodicals, video and sound recordings, sheet music, scores and other materials in 13 UH System libraries, including the nine campus libraries, the William S. Richardson School of Law Library, the John A. Burns School of Medicine Library Resource Center, the Business Research Library (Kihei, Maui) and the University Center at West Hawai'i Library (Kealahou, Hawai'i).

Other databases presently available include Hawai'i Medical Library, Hawai'i State Archives, Trust Territory of the Pacific and Hawai'i Pacific Journal Index.

The Trust Territory of the Pacific database is an index to documents on microfilm, photographs and other material from the records of the former Trust Territory Government (Micronesia).

UH Mānoa Library's Hawai'i Pacific Journal Index (HPJI) indexes nearly 100 journals published in or about Hawai'i on all subjects. Many journals covered by HPJI are not indexed in other reference publications. (<http://libweb.hawaii.edu/uhtmlib/databases/hpji.html>)

Ke Kūkini

Ke Kūkini: Newsletter of the University of Hawai'i at Mānoa Library is published by the University of Hawai'i at Mānoa Library, 2550 McCarthy Mall, Honolulu, Hawai'i 96822. Telephone: (808) 956-7205; Fax: (808) 956-5968; Email: library@hawaii.edu.

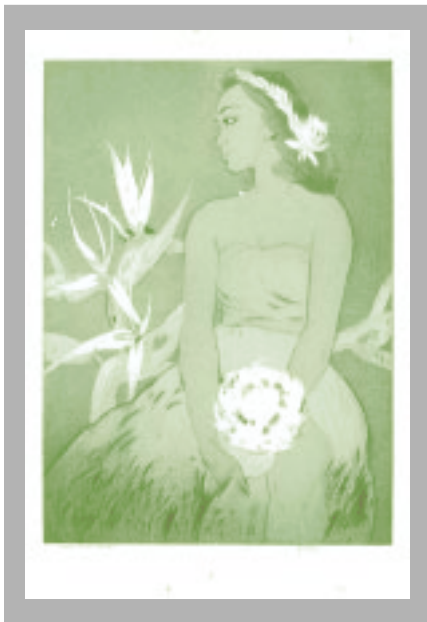
Ke Kūkini is distributed free. Send inquiries and changes of address to Ke Kūkini Newsletter at the address above. Portions of the text may be reproduced in whole or in part provided that credit is given.

Editor: Wil Frost, UH Mānoa Library
Proofreaders: Ellen Chapman, Eileen Herring and Sharon Ouchi, UH Mānoa Library
Printing services: Michael Tamaru, UH Office of External Affairs & University Relations
Photographs: Lynn Davis and Wil Frost, UH Mānoa Library; Robert Chinn, UH Office of External Affairs & University Relations; and John Haak, University Librarian Emeritus

Printed on Recycled Paper

Kelly Collection Grows

The John M. Kelly Collection grew in December with the addition of seven original prints donated to the Library by Kathleen M. Kelly, granddaughter of John Melville Kelly (1879-1962), the famous printmaker of Hawai'i. The collection of more than 100 prints provides a wealth of study material for students in art and Hawaiian studies.



"White 'Uli 'uli" by John M. Kelly (reprinted with permission of Kathleen M. Kelly)

New prints include "White 'Uli 'uli" (1939), which was a menu cover from the Royal Hawaiian Hotel, several key plates for the final etching of "White 'Uli 'uli", and other aquatints and pencil drawings.

The images of Kelly celebrate Polynesian life, most especially the "languorously lovely Polynesian girl." The prints, including dry points, etchings and aquatints, also reveal Kelly as a master of technique.

Kelly moved to Hawai'i in 1923 to work for Charles R. Frazier. He also served as art director for the Honolulu Star-Bulletin from 1926-32. View the John M. Kelly Collection web site at <http://www.hawaii.edu/speccoll/kelly.html>.

Cathro Collection Arrives

After sitting on docks in London for nearly two years, the Library has received a bequest of 2,533 Hawaiian music recordings from the estate of James Grant Cathro of Glasgow, Scotland.

Mr. Cathro collected the recordings, with special interest in steel guitar music, over the course of many years. George Kanahele, editor of *Hawaiian Music and Musicians, an Illustrated History* (The University Press of Hawai'i, 1979), gratefully acknowledged Mr. Cathro's contribution to the "Discography of Hawaiian Music in England" included in his book.

The collection contains 2,056 phonodiscs (33-1/3, 45 and 78 RPM speeds); 236 cassettes and various other recordings. The materials have been inventoried, cleaned and rehoused. Plans are underway for long-term storage, cataloging and access.

Mr. Cathro, who died in 1999, visited Hawai'i in 1995 to attend the Hawaiian Steel Guitar Association's convention held at the Queen Kapi'olani Hotel. He is survived by his wife, Morag Cathro, who was instrumental in helping the Library arrange for shipping of the materials.



encapsulate them for preservation and lay them flat in drawers for retrieval by library users. The Kajiya Collection was donated to the University in 1976.

Bron Solyom, Development Officer, looking at some of the Cathro records

Kajiya Collection Gift

Mrs. Minae Kajiya, widow of contemporary novelist Toshiyuki Kajiya, has donated more than \$5,000 to help purchase a flat file case for storage of maps in the University of Hawai'i at Mānoa Library's Kajiya Collection. Part of the Japan Collection in Hamilton Library's Asia Collection, the Kajiya Collection represents the personal library of Toshiyuki Kajiya. While the core consists of 1,500 volumes on Korea, it contains more than 7,000 titles, including extensive, historical documents on Japanese emigration to North and South America and Hawai'i, Japanese colonization activities in Asia, and historical, political and economic books on Japan from the Edo to post-World War II period. Included as well are the novelist's own publications and source materials.

The Collection contains over 100 maps of Korea. Most are maps of colonial Korea (1910-1945) and some date back to 1905. At the present time, all of the maps are folded and stored in envelopes. This makes access difficult and unfolding and folding the maps stresses the paper tremendously. Mrs. Kajiya's gift will enable the Library to unfold the maps,

Librarian Renews Library Ties with Okinawa

Tokiko Y. Bazzell, Japan Specialist Librarian

A joint symposium was held in Okinawa, Japan on November 5, 2001, between the University of Hawai'i and the University of the Ryukyus. The topic of the symposium was a "Joint Partnership for Academic Leadership in the Pacific Region." A ten-member delegation accompanied University of Hawai'i President Evan Dobelle to the symposium and I had the privilege of making a presentation on behalf of the UH Mānoa Library.

Although our universities' cooperation was first formalized in 1988, the partnership of our two institutions dates back to the 1950s. Throughout the symposium, the presenters discussed our relationship in terms of the past, present and future. I was very interested to hear about UH/Okinawa cooperation in areas beyond the Japan Collection, particularly in the sciences. Dr. Ken Kaneshiro's fruit fly research, for instance, helped Okinawa eradicate fruit flies, and ensure on-going exportation of fruits to other countries. In terms of the Library, our relationship with the University of the Ryukyus Library began after 1961, when Dr. Shunzo Sakamaki purchased the Frank Hawley Collection (Ryukyu/Okinawa collections) with the assistance of leaders from Okinawa and the Okinawan community in Hawai'i. Although formal exchanges between our libraries ceased in the mid-70s, information sharing at an individual level continued. This symposium served as a means to rekindle cooperative efforts at the institutional level. The symposium concluded with the University Presidents signing a joint agreement whereby our institutions will "develop cooperation between our libraries for the exchange of publications and materials related to Okinawa studies and other applicable fields."

After the symposium, I visited other institutions, such as the Okinawa Prefectural Archives and the Okinawa International University Library. Both institutions have beautiful buildings with state-of-the-art information facilities. The former holds valuable documents related to the US Civil Administration of the Ryukyu Islands, maps, and photos, as well as ancient Okinawa/Ryukyus scrolls and manuscripts.

The islands of Hawai'i and Okinawa have many things in common. Since the first immigrants from Okinawa arrived here in 1900, immigrants of Okinawan descent (they identify themselves as "Uchinanchu") have maintained strong cultural, spiritual, and business ties to their homeland. The symposium coincided with the World Uchinanchu Festival where 4,000 overseas Uchinanchu, including 800 from Hawai'i, gathered in Okinawa and celebrated their common heritage. It was a moving experience to witness the passion and energy among all the generations of Uchinanchu united on such an occasion.



Preservation Department Workroom in Hamilton Library Addition

New Preservation Facility

Lynn Davis, Preservation Librarian

Hawai'i's environment accelerates the deterioration of books, maps, photographs, tapes, and other formats in the UH Mānoa Library's collections. Preservation plays a key role in maintaining these resources for use by students and scholars.

To address the long-term preservation needs of diverse collections, a specially designed facility for the Preservation Department was included in the new Hamilton Addition. The facility has a conservation laboratory for treatment of deteriorating and damaged materials including the prints, drawings and maps in the Charlot, Hawaiian, Pacific and Asia Collections. It has two state-of-the-art Wei-To freezers, that are designed to treat materials for insect infestation as well as to dry water-damaged books.

Libraries everywhere are facing the problem of deteriorating paper. As paper deteriorates it becomes brittle and eventually shatters into fragments. The Preservation staff works with the Library's subject and regional specialists to identify at-risk materials and determine appropriate treatments, such as stabilizing originals when possible or making microfilm, photocopy or digital facsimiles. Treatment options take into account the physical structure of each item or medium, as well as how items are used.

It is more cost effective, however, to take preventive steps than to treat damaged items. The 1999 Western Association of Schools and Colleges accreditation report applauded the Library's "model preservation program." The Preservation Department's efforts have improved the overall condition of the collections. The Library is monitored on a regular basis, and all incoming gifts are treated for pest infestation by freeze extermination. Learn more at <http://libweb.hawaii.edu/libdept/preservation>.

Information Literacy Web Site Now Available

David Flynn, CIS/BHSD

The Business, Humanities and Social Sciences Department of Hamilton Library recently unveiled The Library Instruction Online Headquarters, which provides access to a combination of locally developed tutorials and selected tools from other organizations to help individuals and classes develop basic information literacy skills.

While many of our new students are already computer savvy, they may lack the information and research skills needed for academic pursuits at the university level.

*“Self-paced modules
can be assigned as a
package or separately,
based on
faculty needs.”*

The tutorials, designed to provide basic instruction to new students with little or no exposure to large academic libraries, are offered in self-paced modules that can be assigned as a package or separately, based on faculty needs. Included are “quick start” guides for many of the library’s larger databases, selected resources for information literacy, and a frequently asked questions (FAQ) section. Faculty seeking basic library instruction for a class can assign the tutorials and have built-in quizzes automatically delivered to their email accounts. The Library Instruction Headquarters is on the web at <http://www.hawaii.edu/infoliteracy>.

Library Receives 2001 Innovation in Instruction Award

The University of Hawai‘i at Mānoa Library has been chosen to receive the 2001 Association of College and Research Libraries Instruction Section (IS) Innovation in Instruction Award for its Library and Information Science (LIS) 100 course, “Libraries, Scholarship and Technology.” The course represents the joint effort of University of Hawai‘i faculty members Randy Burke Hensley, Library Public Services Division Head; Professor Margit Misangyi Watts, Director of Freshman Seminars/Rainbow Advantage Programs; Ross Christensen, Humanities Librarian and Vicky Lebbin, Social Sciences Librarian.

The purpose of the course is to introduce students to the major elements of scholarship, and to the nature of investigation, discussion and creation of knowledge in an academic environment, emphasizing the role of libraries. These elements are examined in relation to the concept of information literacy as it relates to information utilization and evaluation. Students develop an understanding of relevant information technology such as database structure, search query formation, and retrieval protocols, and gain knowledge about the nature of the university and its role in the creation of new knowledge, about the role and function of information and libraries in the scholarly process, and about the uses of technology in the form of Internet and database resources. The course lays the foundation for mastering skills crucial to their undergraduate studies and meets requirements for technology and writing intensive designations.

Sponsored by Lexis-Nexis Academic & Library Solutions, the award recognizes librarians who have developed and implemented innovative approaches to information literacy that support best practices in education at their institutions or in their communities.

“The University of Hawai‘i at Mānoa’s LIS course integrates information literacy into the learning community venue and draws upon the collaborative efforts of librarians and faculty to develop and teach the course; it is a thoroughly prepared and well-executed program that is groundbreaking in our field.” – Barbara Beaton, chair of the IS Awards Committee. The award was presented to the recipients at the Annual Meeting of the American Library Association in June 2001. (Information from the ACRL IS Innovation in Instruction Award web site at: <http://www.ala.org/acrl/is/awards/innovation-winners.html>.)



An LIS 100 Class in Hamilton Library

Joyce Watson, 1936 - 2001

Bron Solyom, Library Development Officer

As Library Building Planning Coordinator, Joyce Watson coordinated the Library's planning program during the design and construction of the second (1970-1979) and third (1990-2001) additions to Hamilton Library.

As the only librarian in Hawai'i qualified in this specialty, she was well known not only on campus, but also among architects and contractors in the community for her energetic involvement and ability to communicate the complex, changing nature of the Library's operations and needs.

Joyce examined every library function, met with staff in every department and gathered data about projected space and program needs. She consolidated all of this into program design requirements for the architects and others involved in the planning process. Later, every revision of the plans and specifications, no matter how small, came back for her thorough and conscientious review and feedback.

In the academic library world, Joyce participated in library planning groups and contributed her practical solutions to library pest

management in tropical environments. She was also a leading horticulturist. Her panax collection is the most complete in Hawai'i and will be the basis for the memorial garden at Ho'omaluhia Botanical Garden on O'ahu.

Joyce was renowned for her energy, her persuasive skills, her ingenuity and attention to detail. Her goal was to make ours the best library she possibly could, with physical facilities that worked for all the functions that take place within. Joyce saw the building finished before she died in March of 2001. As we begin to use our new building, we remember her as our colleague and friend and honor her accomplishments. We are very grateful that Joyce Watson was on the job to oversee the planning and construction of Phase III. So many things that could have been chaotic, weren't, because of her.



Stanley West, 1912 - 2001

Stanley West, University Librarian of the University of Hawai'i at Mānoa from 1967 to 1977, died April 5, 2001. West came to Hawai'i from the University of Florida Libraries, where he was Director from 1946-1966 and helped build the Irish literature collection. West first taught in the Graduate School of Library Studies (now the Information and Computer Science Department's Library and Information Science Program) and later became University Librarian.

During West's years at Hawai'i, the first phase of Hamilton Library opened in 1968 and library operations expanded to two buildings, Hamilton and Sinclair. West established separate Hawaiian and Pacific Collections and hired the first curator of the Pacific Collection, Renée Heyum, who arrived from the Musée l'Homme in Paris in 1969. In 1970, the East-West Center Library moved to Sinclair Library to become the Asia Collection.

At both Hawai'i and Florida, West was known for his strong interest in building special and area studies collections.

When West left Hawai'i, he returned to Gainesville, Florida, where he practiced law. (Adapted from the Newsletter of the Friends of the Libraries of the University of Florida, Summer 2001.)

Library Statistics, 2000-01

Volumes Held, 6-30-01	3,180,383
Microform Units	5,947,837
Computer Files	3,354
Manuscripts & Archives (lin ft)	6,382
Cartographic Map Items	251,067
Graphic Items	2,466
Audio Recordings	27,184
Film and Video Recordings	23,181
Monographic Volumes Purchased	33,272
Current Serial Titles Received	26,869
Circulation Transactions	361,717
Reference Transactions	106,510
Students in Library Classes	3,757
Professional Staff	56
Number of Support Staff	87
Number of Student Assistants	68
Total Number of Staff (FTE)	211
Materials Expenditures	\$4,716,460
Contract Binding Expenditures	\$241,091
Salaries and Wages	\$6,115,121
Other Operating Expenses	\$1,256,168
Total Library Expenditures	\$12,328,840

Federal Grant Received to Develop Database

Hamilton Library's Science and Technology Department has been awarded a two-year, \$26,000 grant by the US Fish and Wildlife Service to develop a prototype geo-referenced bibliographic database. The database of coral reef and near shore ecology data will allow researchers to store and search for both scientific data and the supporting bibliographic references using a Geographical Information System (GIS) technology interface.

Librarian David Coleman is coordinating the efforts of the US Fish and Wildlife Service, Bishop Museum, Hawai'i Division of Aquatic Resources and the Coral Reef Assessment and Monitoring Program, UH Institute of Marine Biology (Coconut Island) in creating the system.

Randall Burke Hensley Wins Instruction Award

Randall Burke Hensley, Public Services Division Head, is the winner of the Association of College and Research Libraries (ACRL) Instruction Section's (IS) Miriam Dudley Instruction Librarian Award. The award recognizes a librarian who has made a significant contribution to the advancement of instruction in a college or research library environment.

"Randy Hensley's outstanding commitment to leadership, service, and



Randall Burke Hensley

teaching has enhanced the professional lives of many colleagues," said Karen Williams, chair of the IS Dudley subcommittee. "He is a talented and inspired educator, with a vision of how information literacy can enrich the lives of students everywhere."

Hensley currently chairs the ACRL Effective Practices Committee and has been a faculty member for the ACRL Institute for Information Literacy Immersion Program since 1999.

The Miriam Dudley Instruction Librarian Award is sponsored by Elsevier Science on behalf of its journal, *Research Strategies*. A check for \$1,000 and a

plaque will be presented to Hensley during the ALA Annual Conference in June, 2002.

(Reproduced by permission of the American Library Association from "A round of applause for ACRL's 2002 award winners: the second installment of winners," by Stephanie Sherrod, *CRL News*, volume 63, number 4, April 2002, page 285; copyright © 2002 by the American Library Association.)

Recent Grants Received by the Library and Faculty

- Kristen Anderson, Science/Technology; Pacific Regional Aquaculture Information Service for Education, \$25,320
- James Cartwright, Special Collections; travel to present paper, \$2,000
- Martha Chantiny, Desktop Network Services; Dore Minatodani, Special Collections; and Noenoe Silva, Political Science; for digitizing documents related to the annexation of Hawai'i, \$3,500
- Kyungmi Chun, Asia Collection; Korean materials acquisition, \$20,000
- David Coleman, Science/Technology; Pacific coral reefs GIS database, \$26,800
- David Coleman, Science/Technology; various grants for instructional media workstation, \$4,500
- Linda Engelberg, Sinclair Library, and others; various grants for acquisition of video recordings, \$22,000
- Monica Ghosh, Asia Collection, and others; for exhibit on world perspective on 9-11-2001, \$800
- Eileen Herring, Science/Technology; travel to present paper, \$1,400
- Ruth Marie Quirk, Sinclair Library; acquisition of video recordings, \$2,000
- The Library is among nine libraries in the US to be named a 2002 award winner in the North American Coordinating Committee on Japanese Library Resources multi-volume sets program. The Library will receive the set titled, *Kaihō: Kaku Kyōdō Kakumaru-ha Kikanshi*.

Spotlight on Library Faculty and Staff

Paul Beck, Cataloging Support Section, has received the Library's Civil Service Merit Award for 2001 along with co-winner, Eileen Yara.

James Cartwright, Special Collections, has been re-appointed chair of the Elections Committee of the Association of Hawai'i Archivists.

Michael Chohey, Cataloging, has been invited to join the Committee on Cataloging: Description and Access of the Association for Library Collections and Technical Services. Michael also helped organize and served as the first chair of the OCLC Cooperative Online Resource Catalog (COCR) Special Interest Group on Metadata and Interoperability.

Thelma Diercks, Acquisitions and Library Administration, has been appointed to the editorial board of ACQNET and to the Swets Blackwell Advisory Board for academic and medical libraries.

Wil Frost, Library Administration, has been elected Secretary of the Endeavor Voyager Users Group Executive Board for 2002-2003.

Randy Burke Hensley, Library Administration, is finishing his second year as chair of the Association of College and Research Libraries (ACRL) Effective Practices Committee and continues as a member of ACRL's Institute for Information Literacy's Immersion Program faculty.

Eileen Herring, Science/Technology, has completed her M.S. in Horticulture. Her project, the Hawaiian Native Plant Propagation Database, can be seen on the Web at <http://pdcs.ctahr.hawaii.edu:591/hawnprop/>.

Ruth Horie, Cataloging, has been invited to join the Archivists Committee of the Hawaiian Language Legacy Project, sponsored by Alu Like.

Dr. Karen Peacock, Special Collections, and Dr. Nicholas Goetzfridt, University of Guam, have co-authored *Micronesian Histories: An Analytical Bibliography and Guide to Interpretations* (Greenwood Press, 2002).

Diane Perushek, University Librarian, has been appointed to the Association of Research Libraries' Committee on Statistics and Measurement.

Hisami Springer, Cataloging, is a member of the newly formed Research Libraries Group Asian Digital Content Advisory Group.

Dr. Chieko Tachihata, Hawaiian Curator Emerita, and Agnes Conrad, former State Archivist, have co-authored *The Written Record of Hawai'i's Women: An Annotated Guide to Sources of Information in Hawai'i*. 2nd edition (Foundation for Hawai'i Women's History and Alu Like, Inc./Native Hawaiian Library, 2001).

K.T. Yao, Cataloging, has been authorized by the Library of Congress to participate in implementing Pinyin Romanization for Chinese in US research libraries.

Eileen Yara, Acquisitions Department, has received the Library's Civil Service Merit Award for 2001 along with co-winner, Paul Beck.

Hawai'i Library Association election results: Vickery Lebbin, CIS/BHSD – President; Beth Tillinghast, Desktop Network Services – Treasurer; David Brier, Systems, and Gwen Sinclair, Government Documents/Maps – Directors; appointments: Dore Minatodani, Special Collections – Chair, Hawaiiana Section; James Paul Adamson, Systems – Chair, Information Technology Section & Web Master; Amy Carlson, Serials – Chair, Technical Services Section and DeeDee Acosta, Access Services – Chair, Membership Committee.

New Faculty and Staff

The Library welcomes these new permanent staff who began work in 2001.

Rohayati Barnard, Asia Collection
Jane Barnwell, Special Collections
Susan Chow, Serials
Thomas Ishimitsu, Desktop Network Svcs
Susan Johnson, CIS/BHSD
Kathy Kaneshiro, Sinclair Library
Milton Mukai, Serials
Diane Perushek, Library Administration
Nancy Sack, Cataloging
Anne Stone, Govt Documents/Maps
Faith Tanaka, Personnel

Volunteers in 2001

The Library extends a warm mahalo to the volunteers who helped us in 2001.

Eleanor Au, Special Collections
Manuel Duenas, Pacific Collection
Pua Fernandez, CIS/BHSD
Daniel Fitz-Enz, Asia Collection
Yasuto Kaihara, Special Collections
Rachel Liang, Govt Documents/Maps
Febrina Mazrisyah, Asia Collection
Takashi Mita, Asia Collection
Hiromi Monobe, Asia Collection
Ruth Mary Quirk, Sinclair Library
Utsumi Takashi, Asia Collection
Wilma Wilkie, Special Collections
Verna H.F. Young, Govt Documents/Maps

Library Staff Donate to the Aloha United Way and the American Red Cross

Library faculty and staff held their annual kick-off campaign for the Aloha United Way with a buffet luncheon at Sinclair Library on September 19, 2001. By October 12, \$11,111 had been donated. An additional \$555 was donated to the American Red Cross Disaster Relief Fund, in support of September 11 recovery efforts.

Your Support Can Make a Great Difference

The Library is funded primarily by State general funds and tuition revenues. These funds cover basic operating expenses, personnel and purchases of essential library materials. The generous support of individuals and organizations is crucial to insure that the Library can build comprehensive and in-depth research collections that support the broad range of teaching and research that occurs in the University's classrooms and laboratories. Our students and faculty deserve the best!

Your gifts insure that the Library can build the highest quality collections, that technological innovation can occur, and that Library faculty can remain up-to-date in their fields of specialization. We thank you for supporting our vision.

There are many ways to give; gifts of cash and by check are the most popular methods. Gifts of securities, gifts from retirement accounts and bequests in wills and trusts are other ways to arrange a gift to the Library.

A new way to donate is to visit the UH Foundation's web site at <http://www.uhf.hawaii.edu>, where you can choose to support Library Collections, Library Innovation and Technology, Library Staff Development or make an unrestricted gift. It's a fast, secure way to help us build an even better library for UH.

Plan Today for Gifts Tomorrow

One of the central features of the 2001 federal tax legislation is the gradual reduction, and eventual elimination, of the tax levied on estates at death.

If you are in a position in which you believe your estate will pass to others tax free, consider completing a future gift today and enjoy tax and other financial benefits now, while still providing for a significant charitable gift to the Library as part of your long-range plans.

Known as "split interest" gifts, these special plans allow you to enjoy one or more of the following benefits:

- Fixed or variable income for life in amounts you determine
- Income tax savings against today's taxes, based on full market value of assets
- Diversification of investments while reducing or eliminating capital gain taxes
- Professional asset management
- Reduction of probate expenses

If you are not sure whether you will be subject to estate taxes, consider taking advantage of a lifetime benefit gift. This way, you can gain the satisfaction of planning a gift for the Library today and enjoy maximum tax and other financial benefits, regardless of whether or not estate taxes eventually will apply.

The University of Hawai'i Foundation will be pleased to work with you and your advisors as you consider how to best adapt your plans to maximize exciting charitable planning opportunities.

For more information, please contact the University of Hawai'i Foundation at P.O. Box 11270, Honolulu, Hawai'i 96828-0270, or call them at (808) 956-8034. We thank you for your generous support of our plans to build a great library!

The UH President's Club

Show your support of the University of Hawai'i by becoming a member of the UH President's Club. As a President's Club member you will join a community of individuals who support the mission of the University towards national prominence. Choose the Library as your primary partner and we can accomplish great things together!

By making a gift and becoming a President's Club member you will belong to an exceptional group of alumni and friends who share a commitment to higher education in Hawai'i. Private support provides funds above and beyond what is provided by state allocations.

A gift of \$1,500 or more made to the University of Hawai'i at Mānoa Library can be counted towards your annual UH President's Club membership. Your gift will enable the University Librarian to further the mission of the Library by providing budget flexibility and the means to address unanticipated priorities and opportunities.

Benefits include:

- Enhancing the quality of programs at the University by building a strong Library
- Greater access to the University
- Affiliation with like-minded community leaders
- Printed acknowledgment in Annual Reports
- Invitations to exclusive University related events and activities.

For more information, please contact: Bron Solyom, Development Officer, University of Hawai'i at Mānoa Library, 2550 McCarthy Mall, Honolulu, HI 96822. Phone: (808) 956-8688; Fax: (808) 956-5968; Email: brons@hawaii.edu. Thank you for supporting the Library.

You are cordially invited to join The Library Associates

You are invited to become a member of The Associates of the University of Hawai'i at Mānoa Library, our friends group, sponsored by the Library and the University of Hawai'i Foundation.

Membership provides you the opportunity to support the Library, to participate in sponsored events and to receive Ke Kūkini, the Library newsletter. You may join for an annual, tax deductible donation of \$25. Donations of \$1,500 or more qualify for the additional benefits of the University President's Club.

Borrowing privileges are available if you wish, for an extra \$40.00 (not tax deductible). On receipt of your membership application, we will send you a notice to pick up your borrower's card at the Hamilton Library Business Office and complete the quick and easy borrower registration process.

For more information, please contact:

Bron Solyom, Development Officer
University of Hawai'i at Mānoa Library
2550 McCarthy Mall
Honolulu, Hawai'i 96822

Phone: (808) 956-8688, Fax: (808) 956-5968, Email: brons@hawaii.edu

Yes, I would like to join THE ASSOCIATES OF THE UNIVERSITY OF HAWAI'I AT MĀNOA LIBRARY

_____ \$25 *minimum* annual membership donation (tax deductible as allowed by Law)
_____ Larger amount for annual membership donation (tax deductible as allowed by Law): \$ _____ Thank you!
_____ Borrowing privileges if desired (please add \$40, not tax deductible)
Total: \$ _____

Print name: _____

Address: _____ City: _____ State: _____ ZIP: _____

Phone: () _____ Fax: () _____ Email: _____

Please check if you are: ☐ UH Student ☐ UH Faculty/Staff

_____ Check enclosed (payable to UH Foundation for Library Associates Membership)

_____ Please charge to: ☐ Visa ☐ Mastercard

Card number: _____ Expiration date: _____

Signature: _____ Date: _____

Mail to: Bron Solyom, Development Officer, University of Hawai'i at Mānoa Library, 2550 McCarthy Mall, Honolulu, Hawai'i 96822

Time Capsule Installed at Hamilton Library

Ellen Chapman, Matsunaga Papers Archivist

On March 14, 2002, a time capsule to be opened in 2050 was placed in a small vault on the Bridge between the new Addition and the older wing of Hamilton. Materials placed in the time capsule are intended to provide a snapshot of the library as it was in the year 2000 so that library staff 50 years hence can understand a little about us and our work.

Contents include photographs, forms, information from the Library's web site, various media such as DVDs, cartoons and much more. We imagine that some of the information storage media will be curiosities. Surely microfilm and microfiche will outlast us, but what about 3.5-inch floppy diskettes and CDs? Will the staff in 2050 have hardware to read these media? Will the data still be intact? Some of the youngest staff and student workers in 2000 may attend the opening of the capsule and reminisce about such antiquated items, or discover the groundbreaking and renovation project T-shirts designed by Library staff and exclaim, "Those were the good old days!"



Bronze plaque covering Time Capsule

Electronic Reserve Service

Electronic Reserves is a new service offered at Sinclair Library. Faculty place quizzes, class notes, syllabi and other materials on reserve and students access them through the Hawai'i Voyager online catalog by searching the professor's name, campus or course number to find materials for their classes. The Library accepts materials in digital form or can scan items for faculty. Information is available at: http://www.sinclair.hawaii.edu/HTML/reserves/re_print/index.html.

Wireless Network Access in Sinclair Library

The Reserve Book Room in Sinclair Library has been upgraded with wireless networking capabilities for UH students faculty, staff and researchers who bring their own laptops equipped with wireless cards. Access to the campus network is possible from any location within the Reserve Book Room. Consult the display and handout in Sinclair or go to <http://www.hawaii.edu/wireless> for information about wireless setup and requirements.

Pacific Islands Theses List

The Pacific Collection web site now lists Pacific Islands theses and dissertations from the University of Hawai'i updated through 2000. (<http://www.hawaii.edu/speccoll/pacificd&t.htm>)

National Ranking in ARL

The UHM Library ranked 68th among the 113 university members of the Association of Research Libraries in 2001, indicating its relative size among research libraries.

University of Hawai'i at Mānoa Library
2550 McCarthy Mall
Honolulu, Hawai'i 96822
