

What's in the news?

Ka Leo o Hawaii

THE VOICE OF HAWAII

Holiday tomorrow!
Happy Thanksgiving
to each and everyone

LEADERSHIP CONFERENCE

A good many ASUH members have apparently thought that a lack of so-called school spirit on the campus might be due to a lack of effective student leadership.

At least, one campus organization thought so and decided it would like to do something on this score, with the sanction and help of the ASUH council.

Peggy Yorita, Associated Women's Students president, appeared before the council Friday with a plan mapped out by AWS leaders. With seriousness and conviction, she announced that the women's organization intended to hold a leadership conference for student leaders, certain faculty members and interested ASUH members.

What would happen at this confab are outlined herewith:

1) Present difficulties regarding solution of several campus problems would be aired.

2) Criticisms and suggestions regarding the running of the ASUH in general would be made.

3) Student leaders would get acquainted with each other.

Salvation of ASUH?

One councillor promptly suggested that the AWS be given financial as well as moral support for its venture. The council gave the AWS its immediate blessings, promised to help in whatever way possible.

Success of such a program will depend on how well necessary details are worked out and how well students and faculty members will cooperate in the project. A great deal will depend on activities of the AWS within the next few weeks.

Reflected some thoughtful students: The AWS may turn out to be the salvation of ASUH.

Rock gives UH pictures of China

Dr. Joseph F. Rock, explorer, prominent world botanist, and former member of the faculty, presented five pictures of scenes in China to the University when he visited here during the summer.

These pictures now hang on the walls of the President's office where students and faculty members are invited to view them. They were taken by Dr. Rock during one of his numerous botanical expeditions into unexplored China.

One is a view of the Shou-chu river, backdropped by the mountain peaks of Hsi-k'ang province in the independent lama kingdom of Muli. Another shows Minya Konka, a mountain which towers 24,900 feet in snowy splendor. A third depicts a thick birch forest north of Baron Gamba in the same province.

Now with the United States Map Service, Dr. Rock made a tour of the campus and looked over the many plants and trees he planted while here from 1911 to 1919. In addition to his other vocations, he is also an author and has written several books on the plants and trees of Hawaii. His name appears in "Who's Who."

Commerce club meets

All members of the Commerce club are asked to attend an important meeting today at 12:45 in SS209, announced Nelson Doi, president.

L leftover tickets and money are to be handed in by members at this time.

Vol. XXIII

UNIVERSITY OF HAWAII, WEDNESDAY, NOVEMBER 22, 1944

No. 10

\$300 is goal for campus seal drive

Three hundred dollars is the goal set this year for the campus Christmas Seal Sale campaign which will begin Monday and last until December 6.

Carol Suzuki, junior majoring in business and economics, was designated chairman of the drive by Pat Walker, ASUH president.

Students on her committee are Alana Wong, Masako Mori, Evelyn Murashige, Yaeko Okahata, Judith Doue, Mabel Nishikawa and Peggy Yorita.

Seals will be sold at Hemenway hall from 11:30 to 1:30.

Funds from the campaign, which is territory-wide, will be used in connection with the prevention and cure of tuberculosis.

Last year, \$312 was collected by the ASUH committee.

Committee to report on use of gymnasium

A report will be submitted to the ASUH council Friday on the findings of the Gymnasium Investigation committee, which is trying to determine whether games of a proposed city basketball league can be played in the gym without interfering with the regular intramural sports program.

George Tanaka, committee member, reported that he and Nelson Doi had asked President Gregg M. Sinclair permission for league teams to use the gym, but the latter had asked for a formal letter of request.

President Sinclair said he wanted the opinion of the athletic department on the proposal before making a decision.

Eight former UH students join the WACs; now awaiting transportation to mainland

By Kimbel Oelke

Three graduates, Unoyo Kojima, Hideko Kanda, and Emily Johnson, and five former students, Emily Kaalehua, Linda Tanaka, Agnes Wilhelm, Frances Alsobrook, and Genevieve Hoe, are now proud members of Uncle Sam's WACs.

All eight are at present awaiting shipment to the Mainland for training, along with 31 other women recruited on Oahu to date.

Recruiting for the Women's Army corps will cease on December 1. Information concerning recruiting on the other islands is not available at this time, officials stated.

Unoyo Kojima, who was graduated in 1938 with a BS degree, and who worked in the registrar's office for the past five years, was among the first group of six Oahu women to take the oath from Lt. Gen. Robert C. Richardson at Iolani palace on October 17.

According to Captain Audrey

Walker appoints students to BOP

Appointments of Edna Ching, Yuji Yamashita and Henry Awana to the Board of Publications by ASUH President Pat Walker were approved Friday by the student council.

President Gregg M. Sinclair will appoint two faculty members to the board which consists of 11 members. One alumni representative will be appointed by the Alumni association.

The remaining five members assume their positions automatically. They are ASUH President Pat Walker, who shall act as ex-officio chairman; Elbert Yee, graduate manager, who will be executive secretary; Caroline Dizon and Charlotte Chun, Ka Leo and Ka Palapala editors, respectively, and Clara Funasaki, Ka Leo business manager.

Miss Chun is at present temporary editor of the yearbook, but her appointment will be made official when the board meets.

Freshmen select 17 councillors

Seventeen freshman councillors were chosen at a recent meeting of freshman class officers last week Tuesday in Gartley hall.

Representatives of various high schools, they are: Alexander Thoen, Kamehameha; Delman Kuykendall, Roosevelt; George Ariyoshi, McKinley; George Akita, Farrington; Reiko Takakuwa, Punahou; Henry Song, Mid-Pacific; Virginia Racuya, Kahuku; George Takani, Kaimuki; Hope Mookini, Sacred Hearts academy.

Richard Omura, St. Louis college; Evelyn Tara, Leilehua; Marian Ellis, Kauai High; Patsy Take, Maui High; James Izumi, Baldwin High; Tsuneo Tamura, Lahainaluna; Eiko Yonamine, Waimea High, and Margaret Wessel, Hilo High.

Scott Robertson, president, appointed Richard Mamiya and Tom Ebesu sport managers for the remainder of the year.

Sophs to have class day soon

December 9 has been designated Sophomore Class Day and sophomores will celebrate the day with a barn dance at the gym, Bernard Yim, class vice president and social chairman, announced.

Program for the informal get-together, which will take place from 1:30 to 6, will include a business meeting, sophomore talent parade and a boys' beauty contest. "Sloppy Joe" and "Sloppy Jane" prizes will be awarded students dressed in the most informal attire. Refreshments will be served.

Heading the various committees are Hazel Ikenaga, decoration chairman; Elizabeth Ahn and Evelyn Murashige, program; Peggy Ishida and Victor Mori, food; Donald Char and Paul Kokubun, clean-up, and Alfred Laureta, publicity.

Frosh to conduct War Loan drive

ASUH president Pat Walker has selected the freshman class to conduct the campus War Loan drive which will be held in conjunction with the national Sixth War Loan drive, November 20 to December 16, and will continue until the end of this school year.

Approval to conduct this campaign was given by the student council at its meeting Friday.

Plans were made at yesterday's freshman council meeting and will be published in the next edition.

Group to decide upon Hemenway hall policies

A Hemenway hall committee has been formed which will decide on policies regarding the use of the student union building.

Mendel Borthwick was appointed chairman of this committee at the ASUH council meeting Friday. Members are: Betty Kikawa, Harry Ishida, Patsy Takemoto, Martha Nitta, Margaret Kurisu and Dr. Bruce White.

UH prexy opens office to students

President Gregg M. Sinclair announces that, beginning next Wednesday, he is keeping his office open for students every Wednesday afternoon from 1:15 to 4.

He invites any student to come in and see him about anything during these hours.

Said he: "When I was a professor I always had time available to students . . . I like to meet students. If I don't set a special time, they won't come in. I'll become absorbed in mere details and may lose sight of the most important part of the University—the students themselves."

He explained that it was a little difficult to have campus life functioning as it would in ordinary times, but hoped students would try to make it as much like that as possible.

"I'm not referring particularly to the hazing situation," he winked, "about which I heard when I was in New York. I'm referring to the normal situation."

Student dormitories will be the first request for buildings to the legislature next year, the chief executive stated.

"We think it is absolutely necessary to house students properly. That, in turn, will result in more of a community spirit among students on the campus," he explained.

The President said he was very anxious to have more convocations and student meetings and regretted that he was unable to get Ambassador Joseph E. Grew to speak to students recently. He felt the ASUH would benefit greatly from listening to people of the type of Ambassador Grew and promised to invite such speakers whenever possible.

This way students will "have more pleasant memories of their college days," he concluded.

Occupational therapy exhibit at cafeteria

What the handicapped people of Hawaii are doing to improve their mental and physical condition, may be seen at a handicraft exhibit placed in the cafeteria by the Occupational Therapy Association of Hawaii.

Shown in the display are lauhalala bags and slippers made by patients at Leahi hospital and several beautiful fishing flies. A carefully designed wallet was made from scrap leather by a patient with an injured hand at the Aiea Naval hospital.

Such things as ash trays and carved Hawaiian dishes were made to help strengthen arm muscles and nerves.

Samples of more than fifty different knots are also included in the exhibit.

If anyone is interested in studying occupational therapy or helping the convalescent and physically disabled, he may contact the Occupational Therapy Association of Hawaii by inquiring at the Queen's hospital.

Let's be sensible . . .

Since Ka Leo came out editorially a couple of weeks ago in defense of Dean Arthur Keller's (then acting president) stand in regard to use of the University gymnasium, word has gotten around the campus, particularly among sports enthusiasts, that Ka Leo is anti-sports.

Now, let us be sensible.

Nothing can be further from the truth. Ka Leo is just as pro-sports as is the most rabid of athletic-students. But one thing should be made clear. Ka Leo will not condone the use of the gymnasium by a favored few to the detriment of the whole student body.

If the proponents of the plan to use the gymnasium for a series of junior basketball league games would stop to think and look at the whole situation with proper perspective, they would soon realize that first things should come first. They would realize that what little value would accrue in the interest of athletics by their proposed plan would, in the long run, be far out of proportion to the damage to the gymnasium that is certain to come by the constant moving of chairs or bleachers.

If the proponents of the junior basketball league can submit a plan whereby they can guarantee that little or no damage will be caused by their use of the gymnasium, let them come out with it at once.

Yes, opportunities are here

" . . . The opportunities are here; we just have to meet them."

That was the observation of President Gregg M. Sinclair in discussing Hawaii's role in the postwar world.

After a three-months' "shopping" tour on the mainland for the University's immediate and future needs, President Sinclair has come home with a great deal of enthusiasm for the future of the University and of this community. But what is more important, he has come home with certain definite concrete plans for that future.

And although Mr. Sinclair did not make many definite commitments at the present time (little can be definite during these uncertain wartime conditions), it can be assumed that he has not let any grass grow under his feet.

Like the far-sighted planners of the World Security conference at Dumbarton Oaks, President Sinclair has realized that *now* is the time to lay the foundation for a workable and effective program before the peace suddenly descends upon us.

Judicious, careful planning now will undoubtedly lessen, if not eliminate, the confusion certain to arise at the conclusion of World War II. The University and the community may be grateful for the fact that we have here men of vision and action such as President Sinclair.

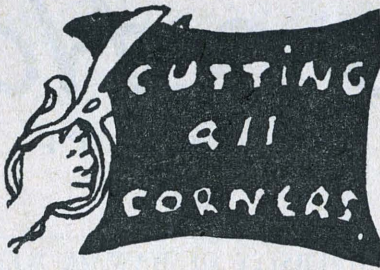
For many years, Hawaii has been known the world over for its tropical loveliness, as a flourishing tourist center, as the land where the pineapple and sugar cane grow. We need to keep these traditions in the postwar world. But we will have to do more. We will have to bring added fame and glory to Hawaii by developing this community into the outstanding cultural and educational center of the world. And Hawaii is in a vantage spot. It is located at the crossroads of the Pacific, a natural intermediary between the Orient and Occident.

It is not only desirable, but imperative, that East and West must come to know and understand and respect each other if peace is to be maintained for any considerable length of time. Hawaii should be a meeting ground, a laboratory in the solution of the numerous differences between the East and the West.

We must be ready to equip this laboratory with men as well as with materials. We must get the best men from both the East and West—educators, statesmen, businessmen, technologists, artists—and this University is the logical place for the meeting and work of such men.

Will Hawaii stand the test of greatness? Can our legislators keep abreast of the times? Can our business and professional leaders see the opportunities ahead?

Yes, opportunities are here. And more will come. Will we be big enough to meet them?



Aftermath of Hamlet . . .

This is a story of what happened to several Ka Leo beehivers after viewing a performance of Hamlet.

It all happened when Eva Ling, Bessie Toishigawa and Kimbel Oelke accepted a lift home from Amy Higashihara in her "leedle" Ford.

All was well until Amy hit the hill on Metcalf St. The "leedle" Ford wouldn't give and after much struggle was brought back to Wilder Ave.

With sporadic coughs, the Ford reached Moiliili and refused to go further. Leaving Kimbel peering into the intricate machinery under the hood, the three girls went in search of a telephone, but returned with reinforcement in the form of a cop.

Through efforts of Kimbel and the innocent policeman, the Ford was coasted to a garage. There, the beehivers were stranded—Kimbel without a ride, the gals without a car.

Kimbel hoofed it back home on foot, and the girls (lucky, lucky girls) were gallantly taken home by the copper.

Apple at work . . .

That old gag about an apple for the teacher apparently prevails even at the University.

Pat Zane, dynamic sophomore, decided that a shiny apple could do a lot for the professor, so with an apple carefully wrapped up, she trotted to school one Thursday.

At precisely 1:30, the apple sat on Dean Thayne Livesay's desk while the psychology laboratory class roared with laughter.

The professor walked in. He saw the apple on his desk and instantly broke into a smile.

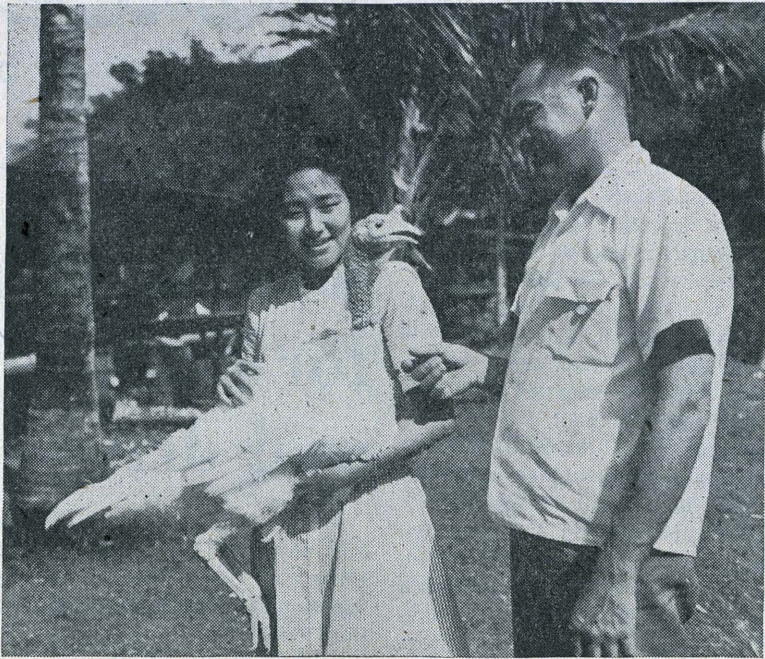
After checking to be sure that the fruit harbored no worms, he put it aside and started his class.

Post-lude . . .

The feature story which appeared last week about the bus rider apparently puzzled more than a few people. The explanation is that it was supposed to be a subtle take-off on the political situation as it has existed in the United States during the last fifteen years.

Inadvertently a word was left out of the last paragraph which would have clarified the story, but the gist of the analogy was that the American people were weaned away from one party by another through promises which offered a little bit more than the postwar administration did, but which really did little to remedy the basic faults.

Turkey for Thanksgiving



The turkey in Bessie Toishigawa, Ka Leo feature writer's arms will no longer wear its white feathers tomorrow. Adrned in a more suitable dress, it will satisfy someone's fowl appetite at the dinner table. Dr. C. I. Draper, supervisor of the poultry farm, gives the turkey a farewell glance before it begins its journey to the oven.

Visit to poultry farm reveals that even the fowls catch cold

If you're a-hunting for a turkey as the mainstay of your Thanksgiving dinner, just arm yourself with a shotgun, a pair of hounds (and an umbrella if you're allergic to freckles) and trek out to the poultry farm in the wilds of the University hinterland.

You'll find a flock of white turkeys to choose from; then too, you'll meet the head of the farm, congenial Dr. C. I. Draper, who came from Pullman, Washington, in the fall of last year.

Run entirely by the University through funds appropriated for experimental work in the territory, the poultry farm was used only for instruction until 1935. From then on, it has been an experimental farm. Although the program now is mostly nutrition and by-product research, work in the past was concerned with breeding, egg quality and resistance to disease.

Yes, even chickens catch cold. Surprisingly enough, the most prevalent disease among fowls at the farm is the common cold. Hmmm, wonder how a chicken sneezes, and who supplies the hankies?

Flocks of white leghorns, Rhode Island reds and small white tupe turkeys are maintained at the poultry farm.

At present, experiments are being conducted to determine the nutritive value of koa hale, algaroba beans, pigeon pea meal, other island grown products and processed army garbage. Results of experiments are printed in circulars, newspapers, progress notes and bulletins.

Now that you know the why's and wherefores of the poultry farm, you may not be so eager to have that turkey for Thanksgiving. Instead, leave him for the cause of humanity—army garbage and all! But you might get acquainted with Dr. Draper and his infectious smile, anyway, by visiting the farm.

Dr. Draper comes from the poultry department of Washington State college at Pullman. He attended Utah State Agricultural college and obtained his doctor's degree at Iowa State college.

Pullman's loss was this University's gain, for Dr. Draper likes Hawaii very much.

Ka Leo o Hawaii

THE VOICE OF HAWAII

Published once a week by the Associated Students of the University of Hawaii. Subscription rates: \$1.40 per semester, \$2.75 yearly. Publication schedule, 1944-1945: Wednesday mornings September 20 through May 23, excepting December 27, January 24, 31, February 7.

Editor-in-chief Caroline Dizon
Business Manager Clara Funasaki

EDITORIAL STAFF

Associate Editor Frances Chang
Feature Editor Amy Higashihara
Society Editor Marian Ching
Sports Editors James Muraoka, Eva Ling
Assistant Editor Kimbel Oelke
Reporters: Bernice Ong, Jean Fukuoka, Charlotte Chun, Cherry Young, Stella Shoda, Delman L. Kuykendall, Constance Young, Mamoru Shimokusu, Helen G. Geracimos, Dorothea Haan, Barbara Silverman, Virginia Racuya, Mildred Quon Bessie Toishigawa, Walter Wong, Piilani Feitera, Ted Hirata, Lillian Tanaka, Ethel Kobayashi, Jean Iwasaki, Nobuo Matsuda, Bernard Yim, Margaret Chinen, Julie Brannen, June Yamamoto, Lawrence Lau, Violet Zane, Shizue Miyagusuku, Harry Conching, Alice Fuji-kawa, Ann Tsutsumi, Doris Nitta, Raymond Mori, Sumiko Nakamoto, Nobuko Shimazu, Reiko Takukawa, Shizue Kuwahara, Midori Okada.
Photographers Ben Ranada, Joseph Dizon, Tom Takashi Tanji
Librarian Ruth Wong
Typists Virginia Tuttle, Majel Williams

BUSINESS STAFF

Assistant Business Manager Winifred Kawamoto
Advertising Managers Pauline Tseu, Herbert S. Coleman
Circulation Manager Ritsuko Sewake
Exchange Manager Ruth Murashige
Assistants Fumiko Otsuji, Rose Chun, Judith Tamashiro, Florence Kakisako, Remedus Laborado, Jennie Yoshioka, Nobue Nago, Michie Fujikane, Marjorie Chun, Elizabeth Fujioka, Annabelle Ching.

The Student Forum

Student's piece aimed at critics of WACs

Editor, KA LEO:

There is a controversy on the campus about the necessity of the WACs. It is not my intention to present a case, but I would like to write, particularly to those women on the campus who, it grieves me to say, are not doing a fraction as much as the WACs are doing, yet audaciously enough are going around making such exploded remarks as "WACs are not a boon to the Army," and such unfair statements as "WACs are self-seeking," "bad," etc.

I address the following piece to those who are slinging mud at the

WACs when they perhaps should be examining themselves.

MARY SMITH, MISSING FROM ACTION

And what of the millions of new-born children,
Mary Smith, woman of America?
And what of the millions yet unborn?

What of the men missing in action?

O, how can you raise your sons and your daughters,

O how can you teach them to love liberty
If you but sit while it is at stake!

Arise, Mary Smith, O woman of America!

Arise from your apathy if you truly but sit,

And work for a world worthy of your children!

Arise! and fight with the man you love!

Give your idle moments to the cause,

Give your blood if you're brave enough,

Give of your money, give of your strength.

Awake! O woman! Lest people say:
Lest people who die and people who rise,

Lest people who come tomorrow say:
Mary Smith . . .

was missing from action . . .
A STUDENT

Hollywood dancer to perform at Thanksgiving semi-formal

A popular Hollywood comic dancer will perform during intermission at the Thanksgiving dance to be held this Saturday from 5:30 to 9 in Hemenway hall.

A few tickets for this semi-formal affair are still available and may be purchased from Mrs. Helena Hauenchild in Hemenway hall.

Henry Spencer and his orchestra will furnish the music. Refreshments will be served.

Paul Kokubun is chairman of the affair, which is being sponsored by the Commerce club.

Invited guests for the evening include: President and Mrs. Gregg M. Sinclair, Dean and Mrs. Thayne M. Livesay, Dean and Mrs. Arthur R. Keller, Dean and Mrs. Benjamin O. Wist, Dean and Mrs. Paul S. Bachman, Dean and Mrs. Bruce White, Dr. and Mrs. Charles Hunter, Dr. John Rademaker, Mr. and Mrs. M. M. Graham, Mr. and Mrs. J. Leong, Mr. and Mrs. F. W. Wagner, Mr. and Mrs. R. Beasley, Mr. and Mrs. Bert Chan Wa and Miss Bernice Minami.

Hostesses in gowns will be Lenora Suiso, Minnie Yamauchi, Maude and Mabel Nishikawa, Peggy Yorita, Carol Suzuki, Bernice Fujikawa, Mary Fujitani, Hilda Morita and Kikuye Tanioka.

Much interest shown in last WAC forum

Are women in the armed forces necessary?

This question proved to be of great interest to students who attended a forum, sponsored by Alpha Sigma Nu Friday at Atherton house.

Miyeko Watanabe, Elias Yadao and Daniel Pang participated in the discussion.

Emphasis on the usefulness of women in various positions was made by the affirmative side. They contended that WACs replace 239 different positions and release thousands of men for combat duty.

The negative side stressed the housing problem, which they claimed was heightened by the shipping over of more women.

A panel discussion on "Problems and Possibilities of Postwar Education in Hawaii" will be held Friday at Atherton House. All students are welcome to attend.

MPI choir will sing at special service

Members of the Mid-Pacific Institute choir will sing at the YWCA Thanksgiving worship service today at Atherton house which will begin at 12:45 and end at 1:30.

Miss Frances Eastman from the Hawaiian Board of Missions, will speak on "With Hearts Unfeignedly Thankful."

Dorothy Nagatori will lead the service with Barbara Emiliano at the piano.

Judith Ito is chairman of the religious program.

Everyone is cordially invited to attend this special worship service.

Attendants are needed for Carnegie library

Only two applications have been received thus far from students interested in becoming part-time attendants for the Carnegie Record library which will begin operating early in December in Hemenway hall.

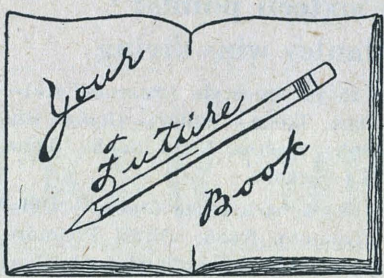
Others who would like to do this type of work should contact Mrs. Cora Beasley or Dr. Bruce White at the Office of Student Personnel immediately. Applicants should have a fair knowledge of and appreciation for music.

TC club election today

Election of temporary officers and directors for the Teachers College club, which is being reorganized, will be held at a general meeting today at 12:45 in Social Science 105.

Crossroads Curio Store

1130 Fort St.
NEAR PAUHAHI
Phone 1022



Today, November 22

Commerce club meeting, SS209, 12:45.

Tu Chiang Sheh meeting, Women's Faculty room, 12:30.

Friday, November 24

ASUH Council meeting, Women's Faculty room, 12:45.

Sunday, November 26

Home Ec freshmen get-together, Grill, 3-6.

Monday, November 27

YWCA Cabinet meeting, Women's lounge and Kitchen, 4-5:45.

Tuesday, November 28

Meeting of Student Organizations and Student Activities committee, Women's Faculty room, 11:30.

Neophytes 'branded'

"Branding" the foreheads of neophytes was an important part of the Phi Lambda Chi initiation ceremonies held recently at the gym.

New members were forced to "sing" for their supper. Stunts performed were a combination of the "Romeo and Juliet" act and "Can You Top This?" jokes and anecdotes.

Hot dogs oozing with mustard, a potato-vegetable salad, and cold drinks were served at the grill. Ball and "concentration" games gave members a hearty appetite.

BANK OF HAWAII

KING AT BISHOP

Commercial and Savings

WITH BRANCHES THROUGHOUT THE ISLANDS



SERVICE TO STUDENTS OF THE
UNIVERSITY OF HAWAII

PARADISE OF THE PACIFIC, LTD.

PRINTERS — PUBLISHERS — ENGRAVERS

BOOKBINDERS — RULERS

Also MANUFACTURERS OF PAPER BOXES

Printing Div. Phone 4797

P. O. Box 80

Paper Box Div. Phone 67948

424 S. Beretania Street

The Oldest
BAZAAR
in the Islands

Hi, Folks!
Do you realize that Christmas is just around the corner? In fact, it's already here at ISO-SHI-MA'S, the Oldest Bazaar in the Islands, where hundreds of gift items await your selection.
COME IN SOON before it's too late to send.

ISO-SHI-MA'S
BAZAAR
1144-46 FORT ST. PHONE 67934

Yule project starts Monday

Many students have been wondering about the two AWS teaser ads which appeared on pages 3 and 4 of last week's Ka Leo. Here's the answer: It's the AWS Christmas project which begins Monday and continues until December 17.

Boys are asked to help make doll dresses for needy children. They won't actually do the sewing, but will be recruited to cut out dresses in the workshop at the Women's lounge in Hemenway hall.

To carry out this project, a great deal of scrap material is needed. Students are asked to bring such material to the AWS office in Hemenway hall.

General chairmen of the project are Hazel Ikenaga and Shieko Okazaki. The various committees are headed by Lani Chun, publicity; Anne Kiyonaga, equipment; Michie Okinaka, clubs; Jean Yamauchi and Remedus Laborado, program.

Sociology club has meeting this afternoon

A threefold meeting of the Sociology club will take place today from 3:15 to 6 in the Women's lounge at Hemenway hall.

ing William B. Rinehart, executive ing William B. Reinhardt, executive secretary of the governor's Committee on the Rehabilitation of Veterans, will speak on the rehabilitation of returning servicemen.

The social hour, which will begin at 4:15, will include a light picnic supper.

According to Consuelo Olivas, social chairman, and Winifred Chu, program chairman, each club member is entitled to one guest who is a potential member. Those attending should have notified one of the officers by yesterday evening.

Do Your Bit

BUY WAR BONDS
AND STAMPS

The Fair
DEPARTMENT STORE
FORT AT BERETANIA

GOODWEAR DRESS SHOP

1130 Bishop St.

Stylish Junior Dresses
AND
Evening Gowns

GEORGE'S AUTO REPAIR SHOP

BELOW UNIVERSITY OF HAWAII — ON
UNIVERSITY AVENUE

Shop Early

FOR CHRISTMAS

Her DIAMOND RINGS

Him . . . BIRTHSTONE RINGS

Whatever the stone, we
have it—in all the new
designs and settings.

Crosses - - Watches

Pins - Locket - Clips

Bracelets - - Earrings

EASY
APPLIANCE CO.

King Street near Fort
Service Motor Co., Wahiawa

Kunikiyo Florist

Phones — 3135-3113
1111 FORT STREET

School Supplies, Greeting Cards
for all occasions, Housewares,
Hardware and Notions.

AMBLER'S
Golden Rule Store

Cor. Beretania & Makiki — 93770

Gift for Every
Occasion



HAWAIIAN CURIOS



Interclub cage Conching named tourney on campus novice tennis champion

Working closely with the intramural sports program the interclub sports league opened last week with four basketball games being played.

With Howard Benham and Joe Tom finding the ringers for 26 points, the Engineers club started the defense of its basketball title by defeating the Pre-meds, 46-16.

Led by Norman Chang and Robert Chuck the strong Peng Hui club rolled over its fraternity comrades, Tu Chiang Sheh, 46-17. The Commerce club with Henry Naga-hisa, and Abe Miyasaka scoring at will, defeated the Aggies, 49-18.

Tomorrow the Peng Huis play the YMCA club and the Aggies meet the Tu Chiang Sheh fraternity.

Conching named campus novice tennis champion

Harry Au Conching was crowned all-campus novice tennis champion by virtue of his 3-6, 6-3, 6-2, 10-8 victory over Clarence Shak last Wednesday.

Although both players were not quite up to par, and made many errors, the championship match had many heated rallies. Shak came through with many brilliant shots and returns, but Conching's superior experience assured him of the title.

Using a terrific topspin and cutting the ball frequently, Shak gave the newly-crowned champ a bad time in the early sets. But, by driving Shak from corner to corner with hard drives and from net to back court with beautiful dropshots and well placed lobs, Conching gradually wore his opponent out.

In the last set, Shak showed real fighting spirit as he rallied with the score of 5-3 against him. Bringing out his cannonball serve and making "impossible" returns, he forced the set score to be deuced four times before succumbing 10-8.

Frosh mermaids win meet; Miyamoto breaks 3 records

Frosh captain chalks up sixteen points;
Podmore leads juniors, Manley wins diving

Led by its well known captain, "Chic" Miyamoto, the frosh team won the interclass swimming meet held by the WAA at the University pool Friday.

They scored 70 points, almost twice as many as the runners-up, the juniors, who had 35½ points. Sophomores finished behind the juniors with 26½ points. No senior team was entered in the meet. "Chic" Miyamoto established three new meet records, cracking the 50 yard backstroke event by negotiating the distance in 36 seconds, swimming breaststroke for fifty yards in 38 seconds, and marking up 54.8 seconds in the individual medley to register 16 points for the frosh team.

Olivia Podmore, winner of the open 50-yard freestyle race, was second in the 50-yard breadstroke event, and in diving, was next high scorer of the meet, chalking up 11 points for the junior team.

Frosh A won the 100-yard freestyle relay in 1:5.3, with the sophs second and the Frosh B team third. Lei Manley won the diving contest, showing good approach, form and entry.

Turnout of women for the various events in the novice, intermediate and open divisions was large, and swimming meet officials expressed satisfaction at the interest and enthusiasm shown.

Winners of the events are listed first and those finishing second and third follow in that order:

50 yd. freestyle (open)—Olivia Podmore, junior; Amy Dewa, soph; Peggy Lees, frosh.

25 yd. freestyle (intermediate)—Nora Ikeda, junior; Grace Siu, soph; Martha Nitta, soph. Time, 16.4 seconds.

50 yd. backstroke (open)—"Chic" Miyamoto, frosh; Olivia Podmore, junior; Mavis Haguland, soph. Time 36 seconds (New record).

25 yd. backstroke (int., novice)—Michie Okinaka, junior; Bessie Toishigawa, soph; Millie Quon, frosh, and Thelma Au, soph. (tie for third place). Time, 20.8 seconds.

50 yd. breaststroke (open) "Chic" Miyamoto, frosh; Olivia Podmore, junior; Kazue Watanabe, junior. Time, 38 seconds, (New record).

25 yd. breaststroke (int., novice)—Midori Okada, frosh, Viola Tracy, frosh; Grace Siu, soph. Time, 21.3 seconds.

40 yd. freestyle relay (novice and int.) — frosh, sophs. Time, 26 seconds.

25 yd. efficiency breast stroke (open) — Mavis Hagland, junior; Kazue Watanabe, junior; "Chic" Miyamoto, frosh. Three strokes.

25 yd. efficiency sidestroke (int.) —Midori Okada, frosh; Thelma Au, soph, and Nora Ikeda, junior; Bessie Toishigawa, soph, and Amy Dewa, soph. (Ties for second and third place). Five strokes.

75 yd. individual medley (open) —"Chic" Miyamoto, frosh; Kazue Watanabe, junior; Amy Dewa, soph. Time, 54.8 seconds. (New record).

Diving—Lei Manley, frosh; Olivia Podmore, junior; Janet Rattray, frosh.

Frosh leading in basketball

With interclass basketball entering its third week, the freshman teams are leading in the three leagues.

In the open league, the freshman team has already won the crown in the first round.

Frosh A in the intermediate league is also scintillating with two victories and no defeats. Today they will play the important game with the junior and senior team which has won one and lost one.

Freshmen also have the situation well in hand in the novice league. The Frosh A and Frosh C teams remain the only undefeated teams in the league.

Schedule for the coming week is as follows:

- Nov. 22 Frosh A vs. Jr.-Sr. Intmd. Soph B vs. Soph C Intmd.
- 24 Frosh B vs. Frosh A Novice Frosh C vs. Jr.-Sr. Novice
- 27 Frosh vs. Jr.-Sr. Open
- 29 Frosh B vs. Jr.-Sr. Intmd. Frosh A vs. Soph B Intmd.

Engard, Shibuya head men's swim team

A men's swimming team has been formed by males on the campus, with Dr. Charles Engard acting as coach and Yoshio Shibuya as captain.

At present, members of the team are: Mitsuo Adachi, Kenichi Akiyama, Albert Evensen, Ah Leong Kam, David Lee, Hisao Nagahisa, Charles Ogata, Yoshio Shibuya, Robert Torigoe, William Vannatta, Rudolph Wassman, Walter Watson, Robert Wong, and John Yoshigai.

In anticipation of dual meets against local teams, the members of the team practice daily at 3:30 in the University pool.

Bill Patton, manager of the team, expressed a desire for more swimmers, especially long distance nators and divers. Anyone interested should contact either him or Shibuya.

*** A TRUST SERVICE**

that is
**EXPERIENCED
AND FRIENDLY**

see

BISHOP TRUST
COMPANY, LIMITED

**Roberto's
Book Exchange**

We buy, sell and exchange books
FAIR PRICE

1021 Alakea Street Phone 2223
Opp. Grossman-Moody

ARE YOU HUNGRY
for the
**BEST FOOD IN
TOWN?**

Try the
CITY GRILL
Open 7 a.m. to 5 p.m.
Closed Every Sunday
King Street (near Fort)
Phone 4290

**Blackshear's
Drug Store**


Beretania and Kalakaua

The Store of Quality

GOOD FOUNTAIN SERVICE
Leave Your Film Here for
Developing and Printing

PAWAA DRY GOODS
DRESS FABRICS, SHIRTINGS, NOTIONS

1469 S. King St. ~ Pawaa
PHONE 95177



Carol Suzuki is the gal in charge
Of 1944's campus Christmas seal
drive.
Let's once again for a worthy
cause charge,
And, like Rawley's Ice Cream,
feel alive.

JEMAL'S
Dresses
and
Housecoats
Lingerie
and
Stockings
ALL SIZES & STYLES

1170 Fort St.
115 Nuuanu St.

Gift Merchandise for
All Occasions

★
**LAUHALA BAGS
HULA SKIRTS
SHELL LEIS**

**HAND CARVED WOODENWARE
GIFT BOXES
HAWAIIAN SPORTSWEAR
HANDBLOCKED GOODS**

Also
JEWELRY DEPARTMENT

A general line of jewelry merchandise

HAWAII GIFT SHOP
Retail in general merchandise and jewelry
Specializing in Hawaiian gift products

MRS. C. Q. PANG, Mgr.
Cor. Hotel & Union Sts. . . . Tel. 2757

Pyramiding Values
call for
Policy Revision

See
ALEXANDER & BALDWIN, LTD.
AGENTS
"We Write All Lines of Insurance"

**Headquarters for
Technical Books**

Fiction, Magazines
and Newspaper
Subscriptions

WALL-NICHOLS CO.
67-71 South King St.

TRUST IN HAWAIIAN TRUST