



UH Mānoa
GENERAL
EDUCATION

Developing an Alignment Framework to Support General Education

Cari Ryan and Christine Beale, General Education Office

Introduction

The General Education Office facilitates course proposal reviews for Gen Ed designations. A course is evaluated by the GEC and Boards based on the extent to which it meets the designation's hallmarks and learning objectives (LOs). Effective courses align assessment to curriculum and instruction (Martone & Sireci, 2009). This poster describes the tools and processes that the GE Office will use to promote faculty reflection and application of this alignment process.

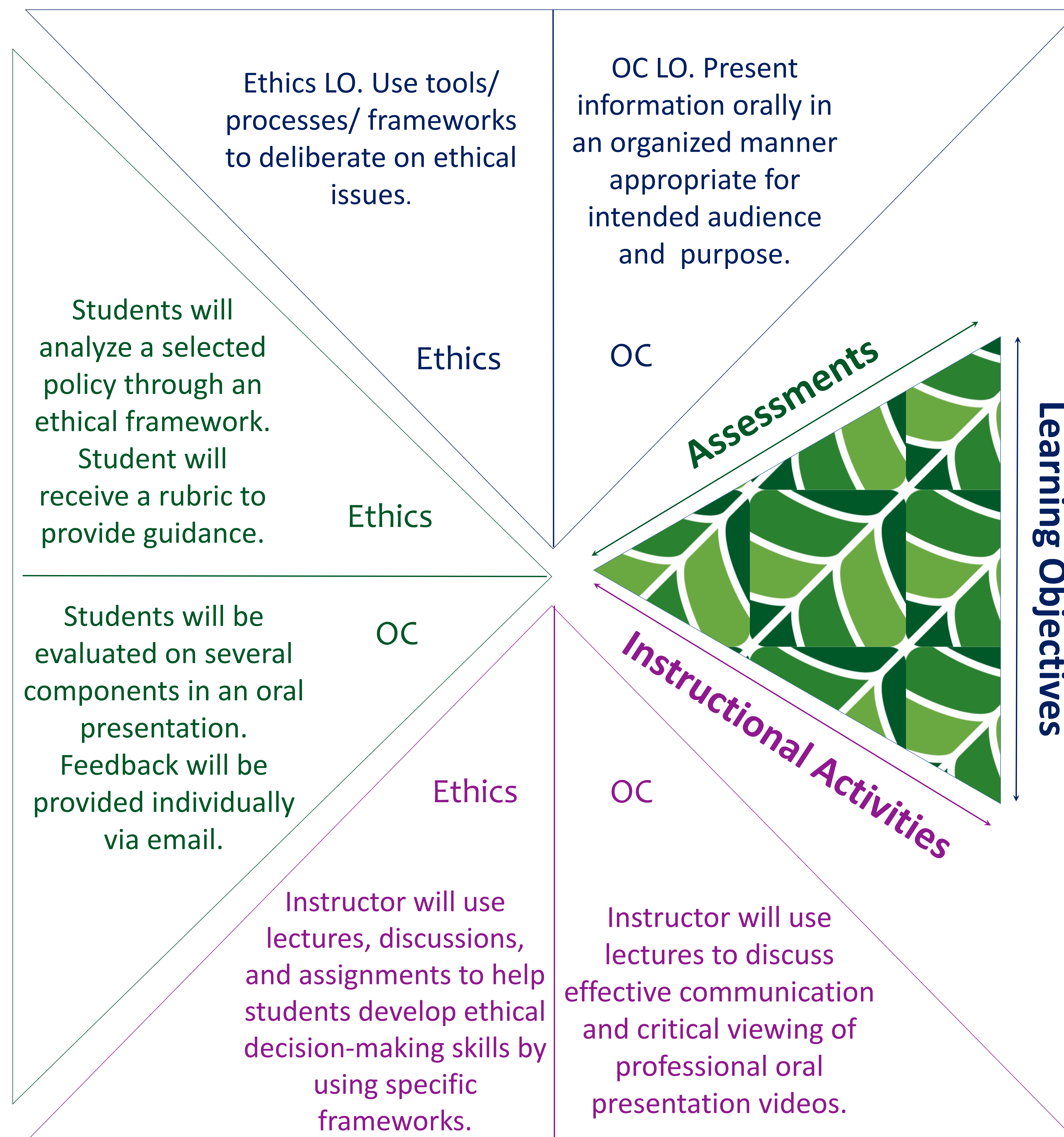
Proposed Framework

- Few Gen Ed course proposals clearly align assignments with LOs and assessment.
- Faculty recommend that Gen Ed Office assists/guides departments to better align assessment with LOs.
- We propose a reflection framework for faculty to consider when aligning course activities with Gen Ed designation requirements.

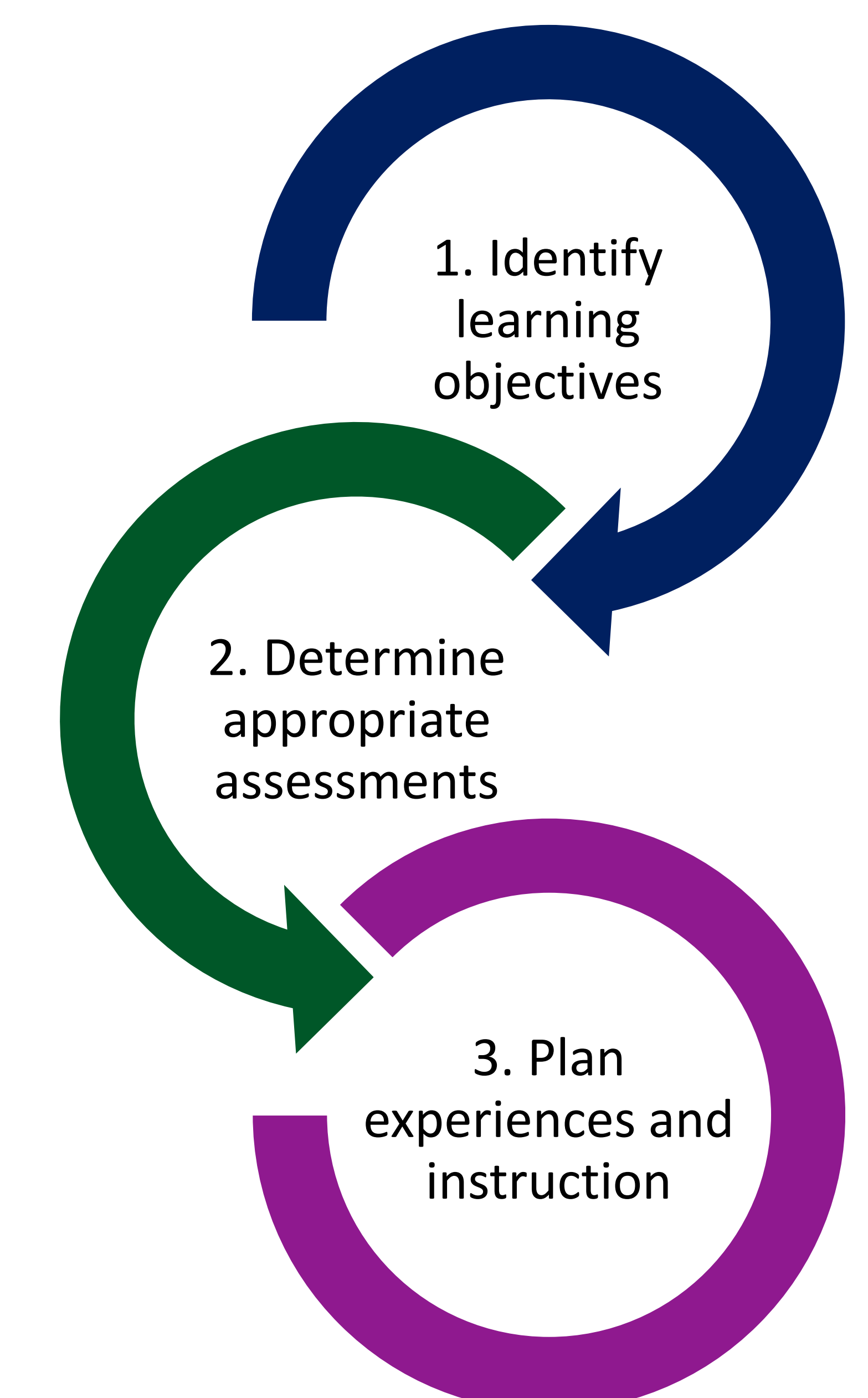
References

Alignment. (n.d.). Retrieved from <https://www.cmu.edu/teaching/assessment/basics/alignment.html>

Martone, A. & Sireci, S. G. (2009). Evaluating alignment between curriculum, assessment, and instruction. Review of Educational Research, 79(4), 1332-1361

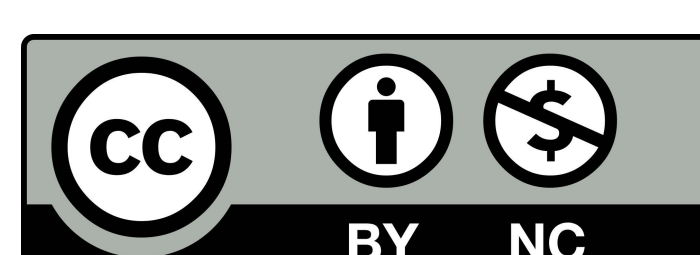


Reflection Process



Action Plan

- 1 Present framework to Assessment Working Group for feedback.
- 2 Create learning resources to aid faculty to consider alignment during proposal process.
- 3 Recruit faculty to test framework during proposal process.



Ryan, C., & Beale, C. (2019, April). *Developing an Alignment Framework to Support General Education*. Poster session presented at the Assessment for Curricular Improvement Poster Exhibit at the University of Hawai'i at Mānoa, Honolulu, HI.